

VOXICON BT HEADSET P75 ANC/ENC



User Manual

Catalog

1.Product Overview-----	-1
2.Basic Operation-----	2
3.Bluetooth Pairing and Connection-----	3
4.Connection with two devices -----	4
5.Charging-----	5
6.LED Indicator -----	6
7.TTS tone-----	7
8.Product Specification-----	8
9.Dongle Operation Instruction-----	9
10.Dongle LED Indicator-----	10
11.Attentions and Q & A-----	11

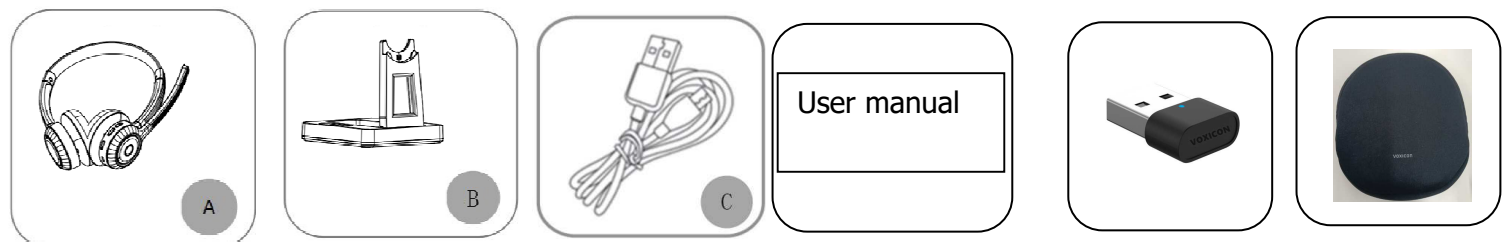
1. Product Overview



Led Indicator / Toggle Switch / MFB / Type-c Charging Interface / Volume+ / Volume-

Packing list:

- A. VX-P75-B Headset x 1
- B. Base Unit x 1
- C. USB-C to A Cable x 1
- D. User manual x 1
- E. USB Dongle X1
- F. Travel bag



2. Basic Operation

Button	Function	Operation Instruction
Toggle Switch	Power On	In off status, toggle the switch to the ON side to power on
	Power Off	In on status, toggle the switch to the OFF side to power off
MFB	Enter Mode	A. Without pairing records, power on to enter pairing mode, with Red Blue Led flash alternately. B. In the unconnected state, double-click the MFB to enter the pairing mode; C. Turn off the Bluetooth of the mobile phone manually, and the headset enters the pairing mode
	Play / Pause	Short press "MFB" when play music.
	Redial A Call	In connected or music state, double press to redial the last call
	Voice Dialing	In connected state, long press for 1-2 seconds
	Audio Switch	During a call, long press for 1-2 seconds
	Answer a call	When a call incoming, short press to answer
	Hang up a call	When during a call, short press to hang up
	Reject a call	When a call incoming, long press for 1 second to reject a call
	Three-way calling function	1. Call coming during a call, short press the MFB to answer the new call and hang up the current call 2. Call coming during a call, double press the MFB to answer the new call and keep the current call 3. Call coming during the call, long press the MFB for 1-2 seconds to reject the new call 4. When you are on a three-way calling, double press the "MFB" to switch audio between the current call and the keep call.
Volume +	Volume Up	Short press
	Next Song	Long press for 1 second
Volume -	Volume Down	Short press
	Previous Song	Long press for 1 second

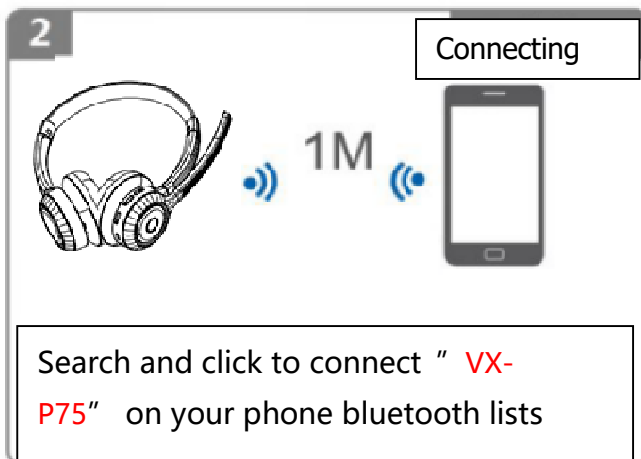
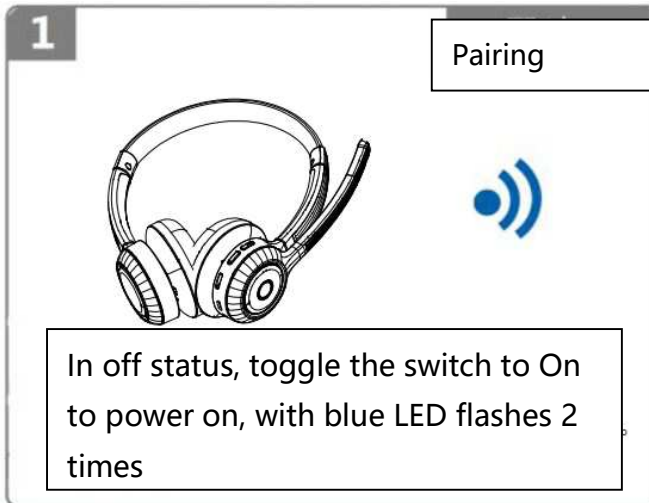
	Microphone Mute	During a call, the microphone lever can be dialed up to 90 degrees to mute, and the microphone lever can be dialed down to unmute
Combine Button	delete paired records	In on-state,(no calls), long press the MFB and Volume-Button for 5 seconds to clear the pairing record. After deleting, the VX-P75 will not connect devices automatically.

3. Bluetooth Pairing and Connection

Headphone

- A. In off status, toggle the switch to On to power on, with Blue LED flashes 2 times.
- B. Search and click to connect " **VX-P75**" on your phone Bluetooth lists, After the connection is successful, the LED turns to a blue light and slowly flashes, and the mobile phone displays "**VX-P75**" is connected. At this time, you can listen to music or answer the phone through the Bluetooth headset.
- C. You can press MFB / Volume+ / Volume- Button on the Bluetooth headset to control the answer/hang up a call and play/pause of the music, next and previous song, volume up and down, microphone up/down to mute/unmute the microphone.

1. In off status, toggle the switch to On to power on, with Blue LED flashes 2 times.
2. Search and click to connect " VX-P75" on your phone Bluetooth lists, After the connection is successful, the LED turns to a blue light and slowly flashes, and the mobile phone displays "VX-P75" is connected. At this time, you can listen to music or answer the phone through the Bluetooth headset..



4.Connection with two devices

- A.The mobile phones connected to **VX-P75** are divided into two sets: Machine A and Machine B.
- B.Toggle the switch to On to enter pairing mode, with Red & Blue LED flash alternately.
- C.Turn on the Bluetooth of machine A and search for the device, search for “**VX-P75**” and then click to connect. After the connection is successful, turn off the Bluetooth of machine A and **VX-P75** enters pairing mode again.
- D.Then use machine B to connect with **VX-P75**, according to the method of machine A. After the pairing is successful, turn on the Bluetooth of machine A and click **VX-P75** to connect. (Some mobile phones may have the automatic connection function).
- E.When the connection is complete, the function of one match two is realized.



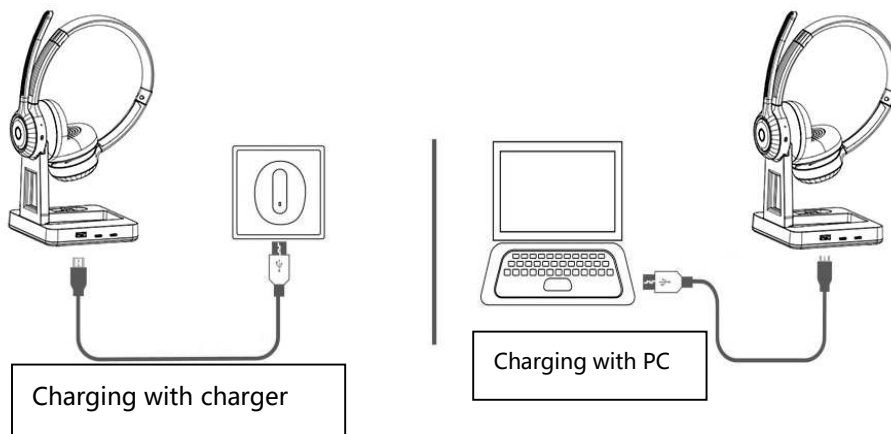
*Music only can be played from one phone under two connections, when you want to play music from another phone, you need to pause or close the music of the previous phone. The same operation during talking status.

5.Charging

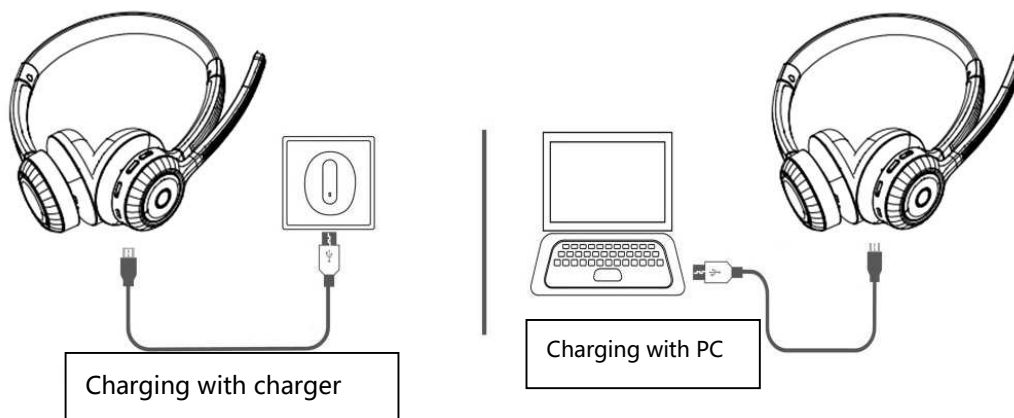
Please charge the **VX-P75** at once when the Red LED flashes. Charging time is about 2 hours. Red Led turns off and Blue LED is always on when full charged.

Charge Connections

1) After the USB cable is connected to the base, the base's red light is always on (the base does not have a battery, please keep the charge), the headphone is charged after putting the base, the headphone's charging red light is on, and the blue light is on after it is full charged:



2) USB cable directly charges the headset: connect one end of the USB cable to the power supply, one end directly into the headset Type C port, the headset is charging with red light, and full charged with blue light on:



*Note:

Please charge the **VX-P75** at least one time every 2 months when don' t use it.

6.LED Indicator

Headphone

Mode	LED Indicator
Power on	Blue LED flashes 2 times
Power off	Red LED flashes 2 times
Pairing mode	Red & Blue LED flash alternately
Connected standby mode	Blue LED flashes once every 10 seconds
Reconnected	Blue LED flashes twice every 5 seconds
Playing Music	Blue LED flashes once every 10 seconds
Talking	Blue LED flashes once every 10 seconds, (no mute with blue led on left is always on, with mute the red led is on)
Delete pairing record	Red & Blue LED are on for 1-2 seconds
Charging	Solid Red LED
Full charged	Solid Blue LED
Low battery	Red LED flashes

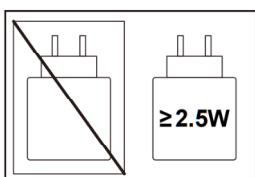
7.TTS Tone

State	prompt
Power on	Power on Tone
Enter pairing mode	Pairing Tone
Pair successfully	Connected Tone
Disconnect	Disconnected Tone
Power off	Power off Tone
Microphone mute on	Mute on Tone
Microphone mute off	Mute off Tone
Low battery	"Barry Low" Tone

8.Product Specification

Headphone

Bluetooth Version	Bluetooth V5.3
Frequency Range	2.402-2.480GHz
Bluetooth Protocols	HFP A2DP AVRCP
CODEC	AAC SBC
Bluetooth Chipset	BES2700IHC
ENC	>30db (200-6000Hz)
Operation Range	10 meters
Music Time	About 53 hours (70% Volume)
Talk Rime	About 25 hours (70% Volume)
Battery Type	420mAh/3.7V
Charging Time	About 2 hours
Operating temperature	-10—55°C
Headset Dimension	180.86*165.83*65.81mm
Base Dimension	109.91*110.04mm
Headset Net Weight	About 166g
Base Net Weight	About 226g



9.Dongle Operation Instruction

Function	Operation Instruction
Power On	Insert the USB interface into the computer device for power supply,check the device name "VX-P75" on the computer device"
Power Off	In the power-on state, dial out the USB interface to shut down.
Reconnect	In the state of matching records,dongle will automactic search "VX-P75"until contact it to the headset
Delete pairing records	In the unconnected or connected state, when the computer normally recognizes the VX-P75 sound card device and the current sound card is VX-P75, click the PC mute/unmute key 6 times to clear the pairing.
Enter pairing mode	If there is no matching record, insert dongle into the matching mode,Clear dongle into the matching mode

10.Dongle LED Indicator

Mode	LED Indicator
Power on	Blue LED flashes
Power off	Blue LED turns off
Pairing	Blue LED flashes quickly
Reconnect	Blue LED flashes once every 1 seconds
Disconnect	Blue LED flashes once every 5 seconds
Connected	Solid Blue LED

11. Attentions and Q & A

A. How to reconnect and operation when failed to reconnect?

When "VX-P75" connected with your mobile phone successfully at the first time, it will search and reconnect the paired device automatically when power on, If failed, please clear the pairing record, then connect your phone again.

B. How to delete paired records?

In on-state, long press the MFB and Volume- Button for 5 seconds to clear the pairing record, with Red&Blue Led on for 1 second. After deleting, the headset will not connect devices automatically. When your headphone cannot be connected, you can try to clear the records.

C. What' s the password for pairing?

Some connection devices require password for pairing, please try 0000 or 8888 or 1111 or 1234.

D. What devices could charge for the headphone?

Any car charger, power bank, PC etc. which meet DC 5V, charging current more than 500mA could be charge for VX-P75.

E. What should I do if some exceptions occur, such as failure to boot, abnormal connection, etc.?

You can try to charge reset: insert the charging line to charge reset, if still can not be used normally, you can seek technical support from customer service or manufacturers.

F. Under what circumstances will it shut down automatically?

No connection for more than 10 minutes or the battery voltage is less than 3.1V.