



InstaShow

Plug and play for wireless Full HD presentations

*True Plug & Play
 *No Software
 *Wireless 802.11ac
 *InstaVideo

*Auto Channel Selection
 *Video and Audio Support
 *Assured Performance
 *Extended Desktop

Feature

Model name	WDC10
Product name	InstaShow
Color	Black
Video outputs	HDMI 1.4, comply with HDCP
Frame Rate	Up to 30 fps depending on environment Video Timing: 1280x720 (720P), 1920x1080 (1080p)
Output resolution	PC Timing: 800 x 600, 1024 x 768 (XGA), 1280 x 768, 1280x800(WXGA), 1280 x 1024, 1280 x 960, 1360 x 768, 1440 x 900, 1400 x 1050, 1680 x 1050
Input resolution	Up to 1920x1080
Simultaneous connections	16 pcs
Audio	Stereo, Radio quality 16bits 48KHz
Wireless	IEEE 802.11ac, 5GHz, 2T2R
Data rate wireless	Up to 400Mbps
Authentication protocol	WPA2(WPA2-PSK(Pre-Shared key) / WPA2-Enterprise)
Security (encryption)	AES 128 bit
Support platform	Windows, MAC, Chrome. Any OS supports HDMI standard 1.4
Reach	Max. 8m between InstaShow Button and InstaShow Host
Temperature range	Operating: 0°C to +40°C (+32°F to +104°F) Storage: -10°C to +60°C (+14°F to +140°F)
Humidity	Storage: 5% to 90% relative humidity, non-condensing Operation: 10% to 80% relative humidity, non-condensing

InstaShow Button

Cable	USB Type A, HDMI Cable	Power supply	DC 5V±10%, 0.9A
Reset button	x1	Power consumption	normal: 4.5W
Mokey key	x1	Dimension	84.5*189.55*19.9mm
LED	*Red(booting), Green(wifi onnected), Blue(presenting)	Weight	100g

InstaShow Host

Power button	x1	Power supply	DC 5V±10%, 1.5A
Paring key	x1		Normal: 5W
LAN	x1 (10/100 Mbps)	Power consumption	Network standby: 2W
Video output	x1 HDMI 1.4(video and		HDMI standby: 0.02W
LED	*Red(booting), Green(ready for connection), Blue(presenting)	Dimension	110*110*27mm(99mm with antenna), (not include rubber feet)
DC Power Jack	x1 (micro USB)	Weight(with antenna)	150g

Cradle

Dimension	85*97.5*170.4 mm	Weight	630g
------------------	------------------	---------------	------

Package

InstaShow Button	x2	Adapter	x1
InstaShow Host	x1	Velcro Strap	x1
Cradle	x1	QSG	x1
USB Power cable	x1 (150cm, USB type A 3.0, micro USB)	Safety Statement	x1
HDMI cable	x1 (80cm)	Double-side Sponge Ta	x1
USB extended cable	x1 (15cm), x1 (80cm)	Rubber feet	x4
Antenna	x2 (Black)	Screws	x4

Go to: <http://www.benq.com/product/projector/INSTASHOW-WDC10/>

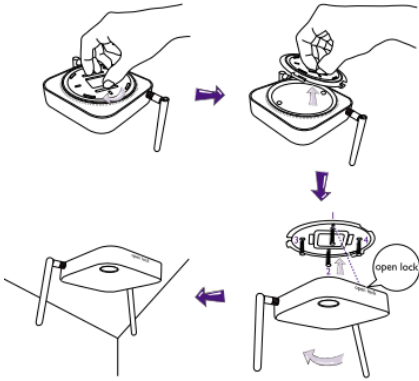
* Please find detail LED behavior in the user manual.

**Wireless connection speed is depended on wireless environment.

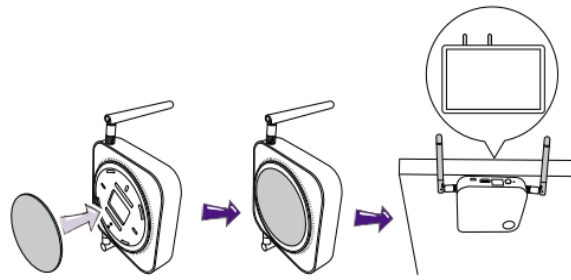
InstaShow

Installation of InstaShow Host

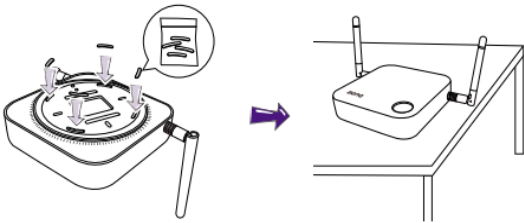
A. Attaching InstaShow Host to the ceiling



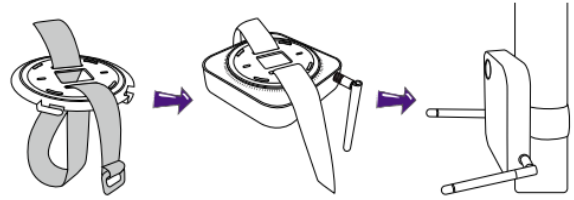
B. Attaching InstaShow Host to a display



C. Placing InstaShow Host on a table

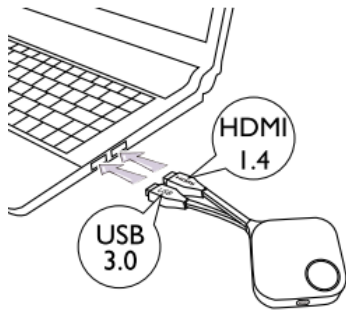


D. Attaching InstaShow Host to a ceiling mount

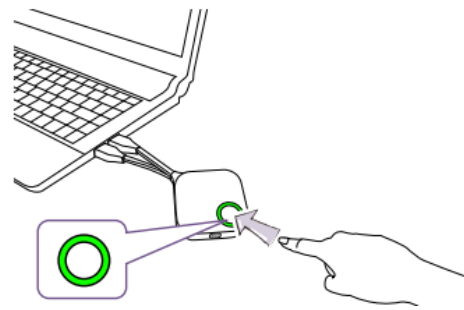


Setup InstaShow Button to Present

Step 1. Connect cable



Step 2. Push the button when LED is green



Dimension

