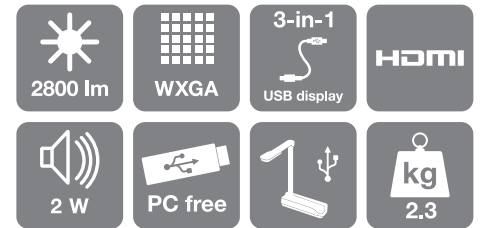


Epson EB-W12 projector

DATASHEET



Make your business' budget go further with the Epson EB-W12 – the high-quality WXGA projector with a wide range of features and an affordable price tag.

This projector is straightforward to set up and use, allowing you to focus on delivering first-class business presentations. With high White and Colour Light Output of 2,800 lumens, you can present even in a bright room. The WXGA resolution fits your wide-screen laptop perfectly and the 3000:1 contrast ratio ensures sharper detail.

Aligning the picture is quick and easy with both automatic vertical keystone and manual horizontal keystone adjuster. The horizontal keystone slider is an innovative and intuitive new design feature from Epson, making it easy to adjust images to the correct shape when the projector is placed at an angle to the screen.

With Epson's 3-in-1 USB Display feature, one cable is all you need for picture, sound and page up/down control - it's the easiest way to display what's on your PC or Mac. Alternatively, the PC-free function lets you present still photos directly from a USB stick without powering up your computer. This means that you have less to carry between meetings and can focus on your presentation.

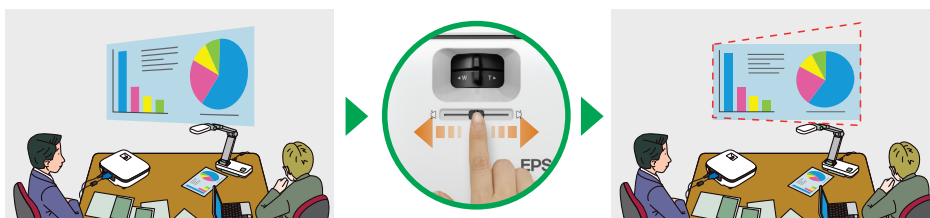
Capture the attention of your audience by plugging the optional Epson ELPDC06 USB Visualiser directly into the projector to give a close-up view of 3D objects. The HDMI input lets you display high-definition content, while a built-in 2W speaker ensures that audio is delivered with clarity. The stylish and compact EB-W12 covers all your mobile needs.

KEY FEATURES

- Sharp picture quality thanks to 2,800 lumens, 3000:1 contrast ratio and wide aspect WXGA resolution
- Automatic vertical keystone correction and manual horizontal keystone correction adjuster for easy set-up
- PC-free: present still photos directly from USB storage devices
- 3-in-1 USB Display: one USB cable is all that's needed for picture, sound and page up/down control



Eliminate the need for photocopies: share 3D objects using the ELPDC06 visualiser



Horizontal Keystone Correction Adjuster: This intuitive new slider lets you adjust images to the correct shape when the projector is at an angle to the screen

No.1
SINCE 2001
EPSON
WORLD LEADER
IN PROJECTORS

EPSON
EXCEED YOUR VISION

PRODUCT SPECIFICATIONS

PROJECTION TECHNOLOGY LCD Panel	3LCD Technology 0.59-inch with MLA
RESOLUTION	WXGA (1280x800) (16:10 aspect ratio) Up to 1080p
WHITE LIGHT OUTPUT * Normal/Eco	2800 / 2240 lumens
COLOUR LIGHT OUTPUT * Normal/Eco	2800 / 2240 lumens
CONTRAST	3000:1
SCREEN SIZE	33-inch to 318-inch
PROJECTION DISTANCE	60-inch screen: 1.68 - 2.02m
THROW RATIO	1.30-1.56:1
ZOOM	Optical x1.2
KEystone CORRECTION	Automatic vertical $\pm 30^\circ$, and manual horizontal adjuster $\pm 30^\circ$
LENS TYPE F Number Focal Length Offset Focus	1.58 - 1.72 16.9 - 20.28mm 10:1 Manual focus
LAMP Life (Normal/Eco) Type	4000 / 5000 hours 200W UHE E-TORL
CONNECTIVITY Video Input Computer Input USB Memory Device Input 3-in-1 USB Display Input Digital Input Audio Input Control Input Epson USB Visualiser Input	1 x RCA (yellow), 1 x S-Video, 1 x Component (D-sub 15-pin) 1 x D-sub 15-pin (RGB), 1 x USB 2.0 type B 1 x USB 2.0 type A 1 x USB 2.0 type B 1 x HDMI 1 x RCA (White/Red) 1 x USB 2.0 type B ELPDC06 (direct connection via USB A)
ADVANCED FEATURES Security Operation EasyMP PC-Free Display	Padlock & security cable hole, Kensington lock, password protection Direct Power On/Off, Instant Off, AV Mute Slide Photo viewer via USB type A (compatible with JPEG/PNG/GIF/BMP) 8 colour modes
LANGUAGES	English / French / German / Italian / Spanish / Dutch / Portuguese / Russian / Swedish / Norwegian / Finnish / Danish / Bulgarian / Polish / Hungarian / Czech / Slovak / Romanian / Croatian / Slovenian / Ukrainian / Catalan / Greek / Turkish / Arabic / Hebrew / Hindi / Japanese / Simplified Chinese / Traditional Chinese / Korean / Thai / Indonesian / Malay / Vietnamese
NOISE LEVEL (Normal/Eco)	37 / 29dB
SOUND	1 x 2W speaker
WEIGHT	2.3kg
DIMENSIONS (W x D x H)	295 x 228 x 77mm
POWER CONSUMPTION Normal/Eco Standby	270 / 223W 0.47W
WARRANTY	2 years on main unit; 1 year on lamp
SAFETY REGULATIONS	IEC 60950-1 1st edition (CE marking) EMC directive (89/336/EEC) Recycling regulations

PRODUCT LOGISTICS

SKU CODE	VXXXXXXXXX
BARCODE	XXXXXXXXXXXX
WHAT'S IN THE BOX	EB-W12 projector, power cable 1.8m, computer cable 1.8m, USB cable 1.8m, remote control and batteries, carrying case, user's manual set
GROSS WEIGHT	4.1kg
CARTON DIMENSIONS (L x W x H)	366 x 338 x 155mm



OPTIONAL ACCESSORIES

- Spare lamp
V13H010L67 (ELPLP67)
- Air Filter
V13H134A32 (ELPAF32)
- 50-inch Desktop screen 4:3
V12H002S32 (ELPSC32)
- 80-inch Mobile screen 16:9
V12H002S21 (ELPSC21)
- 80-inch Pull-up screen 16:10
V12H002S24 (ELPSC24)
- Multi-aspect screen
65-inch/74-inch/80-inch
V12H002S26 (ELPSC26)
- Epson USB Visualiser
V12H321003 (ELPDC06)
- Epson Desktop Visualiser
XXXXXXXXXX (ELPDC11)
- Ceiling Mount
V12H003B23 (ELPMB23)
- Ceiling pipe 668-918mm
V12H003P13 (ELPPF13)
- Ceiling pipe 918-1168mm
V12H003P14 (ELPPF14)



Compact, portable screens: the ELPSC26 (top) offers three aspect ratios while the lightweight ELPSC32 (bottom) can be placed directly on your desktop

For further information please contact your local Epson office or visit www.epson-europe.com

Austria 0810/20 01 13 (0,07 €/Min.) Belgium 070/350120 (0,1735 €/min.) Czech 800/142 052 Denmark 44 50 85 85 Finland 0201 552 091 France 09 74 75 04 04 (Cost of local call, operator charges may apply) Germany 01805/23 41 10 (0,14 €/Min. aus dem dt. Festnetz, Mobilfunkpreise abweichend. Ab 1.3.2010 Mobilfunkpreis max. 0,42 €/Min.) Greece 210-8099499 Hungary 06800 147 83 Ireland 01 436 7742 Italy 02-660321 10 (0,12 €/min.) Luxembourg 900/43010 (0,24 €/min.) Middle East +9714 8818934 Netherlands 0900-5050808 (0,05 €/oproep + 0,15 €/min.) Norway +47 67 11 37 00 Poland 0-0-800 4911299 (0,16 zł/min.) Portugal 707 222 111 Russia (095) 777-03-55 Slovakia 0850 111 429 South Africa (+2711) 465-9621 Spain 93 582 15 00 Sweden 0771-400135 (Mobilsamtal – 0,99 kr/min, Lokala samtal – 0,30 kr/min, Utlandssamtal – 0,89 kr/min) Switzerland 0848 448820 (4-8 cent./min.) Turkey (0212) 3360303 United Kingdom 0871 222 6702

Trademarks and registered trademarks are the property of Seiko Epson Corporation or their respective owners.
Product information is subject to change without prior notice.