

Start labelling immediately using the “Plug in and Label” function. You don’t need to install complicated software or drivers on your PC**.



Effortless label printing - for all applications

The QL-700 uses Brother DK label rolls. Supplied on a spool that incorporates a roll guide, this ensures that the label is always installed correctly, and recognises the size of label inserted. And you get none of the alignment problems associated with printing labels in a traditional printer. So whether you are printing just one label, or several at a time, the Brother QL-700 ensures each label prints perfectly, time after time.

Technical Specifications

Items included

QL 700 label printer
2 x starter rolls:
- 29 mm x 90 mm standard address labels (100 labels)
- 62 mm continuous length paper tape (8 metres)
USB and power cables
CD-ROM containing P-touch Editor 5.0, printer drivers and user guides
Quick setup guide and warranty card

QL-700 Label printer

Dimensions 128 mm(W) x 221 mm(D) x 153 mm(H)
Weight 1.12kg (excluding DK roll)
Control panel buttons 4: (power, P-touch Editor Lite, feed, cut)
Cutter Durable auto cutter
Power supply Internal power supply
Print method Direct thermal
Roll type DK rolls (DK die-cut labels / DK continuous length tape)
Max. roll / print width 62 mm / 59 mm
Min. /Max. label length 12.7 mm / 1 metre
Print head resolution 300 dpi
Print speed 150 mm/sec ! 93 standard address labels/min
Computer interface USB 2.0

Software

P-touch Editor Lite
All installed truetype fonts / 0
4 styles: Normal, Bold, Italic, Underline

Number of frames 10
Image file formats support BMP, JPG, JPEG, PNG, TIF, GIF, DIB, WMF, EMF, ICO
Screen capture Yes
Multi line printing Yes
Multi block printing Yes
Vertical printing Yes
Rotate printing Yes
Number of copies 2 - 200
Mirror printing Yes
Sequential numbering 1 - 200 / A - Z / a - z
Barcode protocols No

Database / file link support No
Add-in support No
Automatic date and time printing No
Languages English / Danish / Dutch / French / German / Italian / Norwegian / Portuguese / Spanish / Swedish / Finnish / Czech / Polish / Hungarian / Simplified Chinese / Slovak / Slovene / Romanian / Croatian / Bulgarian / Russian / Turkish / Japanese / Traditional Chinese / Korean / Traditional Chinese / Korean / Thai / Vietnamese / Arabic

System requirements PC/Mac®

Operating System Windows XP / Windows Vista / Windows 7 ;
Mac OS X 10.4.11 - 10.7
As recommended by operating system
Minimum CPU specification As recommended by operating system
Hard Disk Free Space 100MB or more
Interface USB 1.1 or later specification
Graphics SVGA with high colour or better
Other CD-ROM drive for installation



QL-700

brother
at your side



Professional Label Printer

The versatile QL-700 offers easy to use software and integration with Microsoft Office Applications, for all labelling requirements.

www.brother.eu

- Plug in and label (no software installation required**)
- Print up to 93 labels/second and up to 300 x 600 dpi
- Built-in automatic label cutter
- Includes 2 rolls of labels, software and cables



** Using the built-in P-touch Editor Lite on Microsoft Windows PC's.
Mac users can use the supplied CD to install P-touch Editor 5.0 software and printer drivers (available in English only)

Contact:

brother
at your side

Individual office addresses





Give your company a professional image

Achieve a more professional finish and improve office efficiency through the use of labelling. Envelopes, packages and parcels can be professionally addressed using one of the many sizes of label available, and can even include your business logo if required. Within your organisation, ensure important information can be located quickly through the clear identification of files, folders, CD and DVD discs.



EASY TO SET UP

Connect the QL-700 to your Windows PC. Run the built-in label software, design then print. It's as simple as that.



EASY TO CHANGE ROLLS

Each roll is supplied on a spool that simply slots into the correct position in the printer every time.



USB INTERFACE

Quick and easy to set up and use. The USB cable is supplied with the QL-700 as standard.



PRINT LABELS THE SIZE YOU NEED

Create labels from 12.7mm up to 1 metre in length, using the built-in automatic cutter.



UP TO 300 x 600 DPI PRINT RESOLUTION

Produce easy-to-read labels with crisp text and high quality graphics.



UP TO 93 LABELS/MINUTE

If you are printing on or several labels at a time, the QL-700 will have them ready in just a few seconds.

Simply plug-in and start labelling immediately

The Brother QL-700 label printer offers an easy way to print professional looking labels for a wide range of uses throughout the workplace. We have made label printing easier than ever by incorporating "P-touch Editor Lite" label design software inside the QL-700. Windows users simply need to connect the USB cable, run the software from the pop-up message, then design and print your label. No software or drivers need to be installed.



1. Connect the USB cable

When connected to your PC, the QL-700 is identified as a USB flash drive and a new drive letter appears on your computer. This contains the label design software.

2. Run the built-in label design software

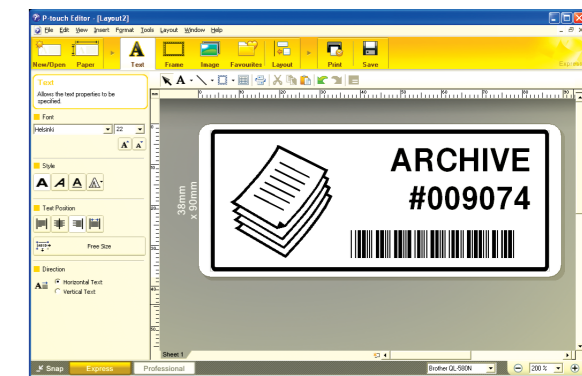
Double-click on the P-touch Editor Lite icon to launch the label design software. As this is built-in to the QL-700 it is always available on whichever PC you connect it to.

3. Design and print your label

Simply design your label by adding text, graphics and frames and then print. No software is installed to your PC during this process.

Also includes professional label design software

The more powerful P-touch Editor software is supplied on CD-ROM, which is installed in the standard way. Offering integration with Microsoft Word, Excel and Outlook, you can print labels directly from these applications. Simply highlight the address, text or information you require, then click the "P-touch" icon in the toolbar to print your label immediately. You can include barcodes, graphics, frames and other information on your labels, whatever your requirements.



DX LABEL

Pre-Sized Paper Labels



DX TAPE

Continuous Label Tape

