

ASUS[®]
IN SEARCH OF INCREDIBLE

LED projector

E-Manual

P3B



HDMI[™]
HIGH-DEFINITION MULTIMEDIA INTERFACE

E10455

First Edition

May 2015

COPYRIGHT AND WARRANTY INFORMATION

No part of this manual, including the products and software described in it, may be reproduced, transmitted, transcribed, stored in a retrieval system, or translated into any language in any form or by any means, except documentation kept by the purchaser for backup purposes, without the express written permission of ASUSTeK COMPUTER INC. ("ASUS").

Product warranty or service will not be extended if: (1) the product is repaired, modified or altered, unless such repair, modification of alteration is authorized in writing by ASUS; or (2) the serial number of the is defaced or missing.

ASUS PROVIDES THIS MANUAL "AS IS" WITHOUT WARRANTY OF ANY KIND, EITHER EXPRESS OR IMPLIED, INCLUDING BUT NOT LIMITED TO THE IMPLIED WARRANTIES OR CONDITIONS OF MERCHANTABILITY OR FITNESS FOR A PARTICULAR PURPOSE. IN NO EVENT SHALL ASUS, ITS DIRECTORS, OFFICERS, EMPLOYEES OR AGENTS BE LIABLE FOR ANY INDIRECT, SPECIAL, INCIDENTAL, OR CONSEQUENTIAL DAMAGES (INCLUDING DAMAGES FOR LOSS OF PROFITS, LOSS OF BUSINESS, LOSS OF USE OR DATA, INTERRUPTION OF BUSINESS AND THE LIKE), EVEN IF ASUS HAS BEEN ADVISED OF THE POSSIBILITY OF SUCH DAMAGES ARISING FROM ANY DEFECT OR ERROR IN THIS MANUAL OR PRODUCT.

Products and corporate names appearing in this manual may or may not be registered trademarks or copyrights of their respective companies, and are used only for identification or explanation and to the owners' benefit, without intent to infringe.

SPECIFICATIONS AND INFORMATION CONTAINED IN THIS MANUAL ARE FURNISHED FOR INFORMATIONAL USE ONLY, AND ARE SUBJECT TO CHANGE AT ANY TIME WITHOUT NOTICE, AND SHOULD NOT BE CONSTRUED AS A COMMITMENT BY ASUS. ASUS ASSUMES NO RESPONSIBILITY OR LIABILITY FOR ANY ERRORS OR INACCURACIES THAT MAY APPEAR IN THIS MANUAL, INCLUDING THE PRODUCTS AND SOFTWARE DESCRIBED IN IT.

Copyright © 2015 ASUSTeK COMPUTER INC. All Rights Reserved.

LIMITATION OF LIABILITY

Circumstances may arise where because of a default on ASUS' part or other liability, you are entitled to recover damages from ASUS. In each such instance, regardless of the basis on which you are entitled to claim damages from ASUS, ASUS is liable for no more than damages for bodily injury (including death) and damage to real property and tangible personal property; or any other actual and direct damages resulted from omission or failure of performing legal duties under this Warranty Statement, up to the listed contract price of each product.

ASUS will only be responsible for or indemnify you for loss, damages or claims based in contract, tort or infringement under this Warranty Statement.

This limit also applies to ASUS' suppliers and its reseller. It is the maximum for which ASUS, its suppliers, and your reseller are collectively responsible.

UNDER NO CIRCUMSTANCES IS ASUS LIABLE FOR ANY OF THE FOLLOWING: (1) THIRD-PARTY CLAIMS AGAINST YOU FOR DAMAGES; (2) LOSS OF, OR DAMAGE TO, YOUR RECORDS OR DATA; OR (3) SPECIAL, INCIDENTAL, OR INDIRECT DAMAGES OR FOR ANY ECONOMIC CONSEQUENTIAL DAMAGES (INCLUDING LOST PROFITS OR SAVINGS), EVEN IF ASUS, ITS SUPPLIERS OR YOUR RESELLER IS INFORMED OF THEIR POSSIBILITY.

SERVICE AND SUPPORT

Visit our multi-language web site at <http://support.asus.com>

Table of Contents

About this manual	5
Conventions used in this manual	6
Typography.....	6
Multi-language versions	6
Safety precautions	7
Using your LED projector.....	7
Servicing and replacement of parts	7
Caring for your LED projector	8
Proper disposal.....	8

Chapter 1: Knowing your LED projector

Features	10
Top view.....	10
Front view.....	13
Rear view	14
Right side.....	16
Left side	16
Bottom view	17
LED projector remote control.....	18
Replacing the battery	19

Chapter 2: Setting up

Operating your LED projector	22
1. Connect the LED projector to the power adapter	22
2. Connect the LED projector to your device	24
3. Adjust the height of the LED projector.....	30
4. Press the power button	32
5. Adjust the image focus	33

Chapter 3: Using the onscreen display menu

Launching programs from the onscreen display menu.....	36
Control panel grid	37
Using your LED projector for the first time	38
Accessing your LED projector's settings	40
Using 3D glasses.....	48
Using Demo Mode.....	49
Enabling Demo Mode.....	49
Creating and playing your own demo video.....	50
Using the Media Center	51
Launching the Media Center	51
Opening files from the SD Card or USB Drive.....	52
Ezlink	58
WiFi	60
Multi-language versions	65

Appendices

Federal Communications Commission Statement.....	68
Regional notice for California.....	68
Canadian Department of Communications Statement.....	69
Global Environmental Regulation Compliance and Declaration ..	69
ASUS Recycling/Takeback Services.....	69
Specifications for P3B LED projector	70
Support PC Timings	73

About this manual

This manual provides information about the hardware and software features of your LED projector through the following chapters:

Chapter 1: Knowing your LED Projector

This chapter details the parts of your LED projector and its accompanying remote control.

Chapter 2: Setting up

This chapter shows you how to set up your LED projector and use its parts for input device connection.

Chapter 3: Using the onscreen display menu

This chapter talks about the features of your LED projector's onscreen display menu and how to navigate it using the control panel.

Appendices

This section includes safety notices for your LED projector.

Conventions used in this manual

To highlight key information in this manual, some text are presented as follows:

IMPORTANT! This message contains vital information that must be followed to complete a task.

NOTE: This message contains additional information and tips that can help complete tasks.

WARNING! This message contains important information that must be followed to keep you safe while performing tasks and prevent damage to your LED projector's data and components.

Typography

Bold = This indicates a menu or an item that must be selected.

Italic = This indicates sections that you can refer to in this manual.

Multi-language versions

Download other language versions of this E-Manual via this website: <http://support.asus.com>

Safety precautions

Using your LED projector

- Refer to the manual and take note of the safety instructions before operating your LED projector.
- Follow the notes and warnings stated in the user manual.
- Do not place your LED projector on uneven or unstable surfaces.
- Do not use your LED projector in smoky environments. Smoke residue may cause build-up on critical parts and damage the LED projector or decrease its performance.
- Keep the LED projector's plastic packages out of the reach of children.
- Do not block or place anything near the LED projector's ventilation holes. Doing so may cause internal heat build-up that can degrade picture quality and damage the projector.
- Ensure that the operating voltage of your LED projector matches the voltage of your power source.

Servicing and replacement of parts

- Do not disassemble or attempt to service this LED projector by yourself. Contact your local ASUS service center for assistance.
- When replacing parts of your LED projector, purchase items as specified by ASUS and contact your local service center for assistance.

Caring for your LED projector

- Switch off then unplug the LED projector from the power outlet before cleaning it.
- When cleaning the LED projector's housing, use a clean soft cloth dampened with water or a mix of water and neutral detergent. Wipe it dry using a soft dry cloth.
- Ensure that the lens is cool before cleaning it. Gently wipe the lens using a lens cleaning paper. Do not touch the lens with your hands.
- Do not use liquid or aerosole cleaners, benzene, or thinners on your LED projector.
- Never operate this LED projector immediately after moving it from a cold location. When the LED projector is exposed to a drastic change in temperature, moisture may condense on the lens and its other internal parts. To prevent this, use the unit two (2) hours after an extreme or sudden change in temperature occurs.

Proper disposal



Do not throw your LED projector in municipal waste. This product has been designed to enable proper reuse of parts and recycling. The symbol of the crossed out wheeled bin indicates that the product (electrical, electronic equipment and mercury-containing button cell battery) should not be placed in municipal waste. Check local regulations for disposal of electronic products.

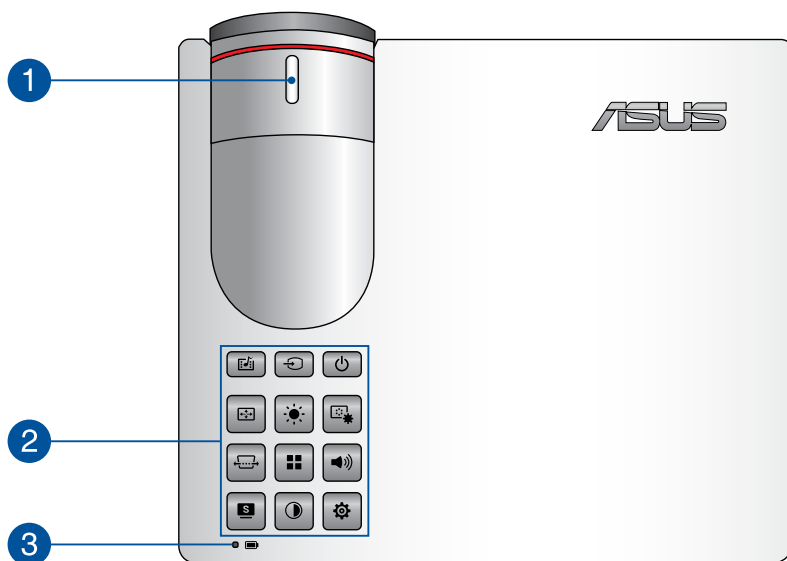


Do not throw the battery in municipal waste. The symbol of the crossed out wheeled bin indicates that the battery should not be placed in municipal waste.

Chapter 1:
***Knowing your LED
projector***

Features

Top view



1 Focus ring

The focus ring allows you to adjust the image focus of your LED projector.

2 Control panel buttons

The control panel buttons allow you to navigate the onscreen display menu. Individually, these buttons also correspond to a specific LED projector setting as indicated below.



Media Center



Input



Power



Image Position



Brightness



Image Setting



Keystone



Main menu/OK



Volume



Splendid



Contrast



Setup

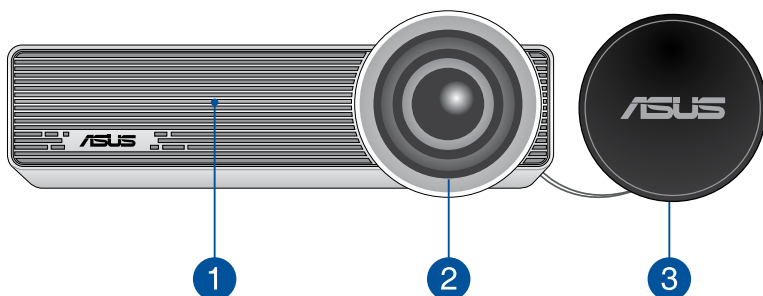
NOTE: For more information on using the control panel buttons to access your LED projector's settings, refer to the *Accessing your LED projector's settings* section in this manual.

3 Battery charge indicator

The Battery charge indicator provides a visual indication of the battery's charge status. Refer to the following table for details:

Color	Status
Solid Green	The battery power is between 95% and 100%.
Solid Blue	The battery power is between 95% and 10%.
Solid Orange	The projector is plugged to a power source, charging its battery, and the battery power is less than 95%.
Blinking Orange	The projector is running on battery mode and the battery power is less than 10%.
Lights off	The projector is running on battery mode and the battery power is between 10% to 100%.

Front view



1 Air vents

The air vents allow cool air to enter and warm air to exit the LED projector.

WARNING! Ensure that paper, books, clothing, cables, or other objects do not block any of the air vents or else overheating may occur.

2 Lens

The lens projects video or image files onscreen from your input device.

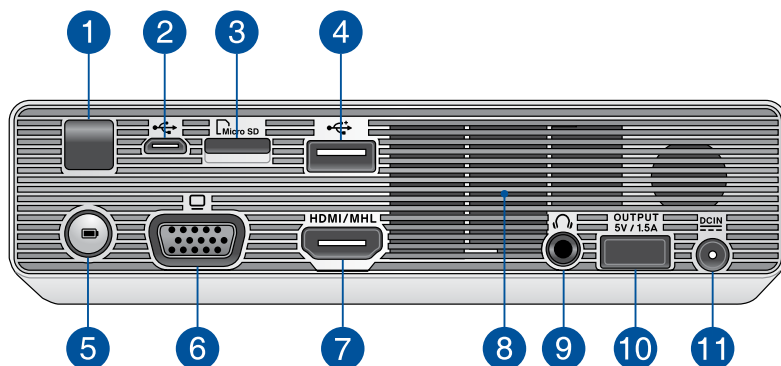
WARNING! Do not touch the lens using your hands or any sharp object.

3 Lens cover

The lens cover protects the lens from scratches and possible dirt build-up.

IMPORTANT! Remove the lens cover before using your LED projector.

Rear view



1 Infrared (IR) sensor

The IR sensor detects signal from your LED projector's remote control, allowing you to access the LED projector's control panel from a distance of up to 7 meters and a receiving angle of 15 degrees.

2 Micro USB 2.0 port

This port also allows you to transfer data from your input device to your LED projector.

3 MicroSD card reader

This built-in memory card reader supports microSD and microSDHC card formats.

4 USB 2.0 port

The USB 2.0 (Universal Serial Bus 2.0) port is compatible with USB 2.0 or USB 1.1 devices.

5 Battery charge indicator button

Press this button to show the battery status of your projector on the two-color battery charge indicator.

6 VGA port

This port allows you to connect your LED projector to other VGA-compatible devices.

7 HDMI/MHL port

This port is for the HDMI (High-Definition Multimedia Interface) connector and also supports MHL (Mobile HI-Definition Link) compatible devices. This port is HDCP compliant for HD DVD, Blu-ray, and other protected content playback.

8 Air vents

The air vents allow cool air to enter and warm air to exit the LED projector.

WARNING! Ensure that paper, books, clothing, cables, or other objects do not block any of the air vents or else overheating may occur.

9 Audio output jack port

The audio output jack port allows you to connect your LED projector to amplified speakers or headphones.

10 Power output port

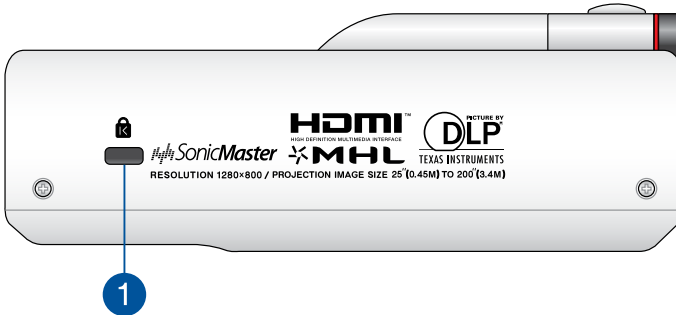
This power output port provides up to 5V/2A of output voltage and current. You can connect your mobile device to this port to keep it charged while using it with your LED projector.

11 Power (DC) input port

Insert the bundled power adapter into this port to charge the battery pack and supply power to your LED projector.

WARNING! The adapter may become warm to hot while in use. Do not cover the adapter and keep it away from your body while it is connected to a power source.

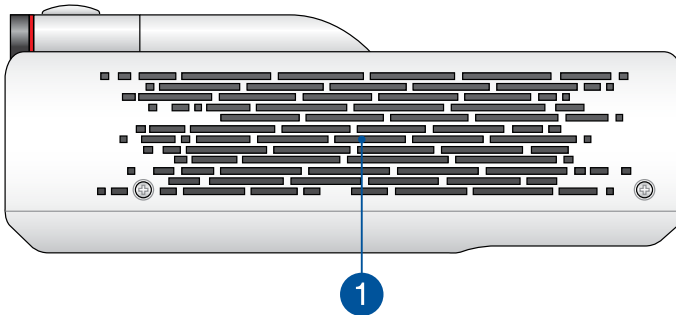
Right side



1 Kensington® security slot

The Kensington® security slot allows you to secure your LED projector using Kensington® compatible LED projector security products.

Left side

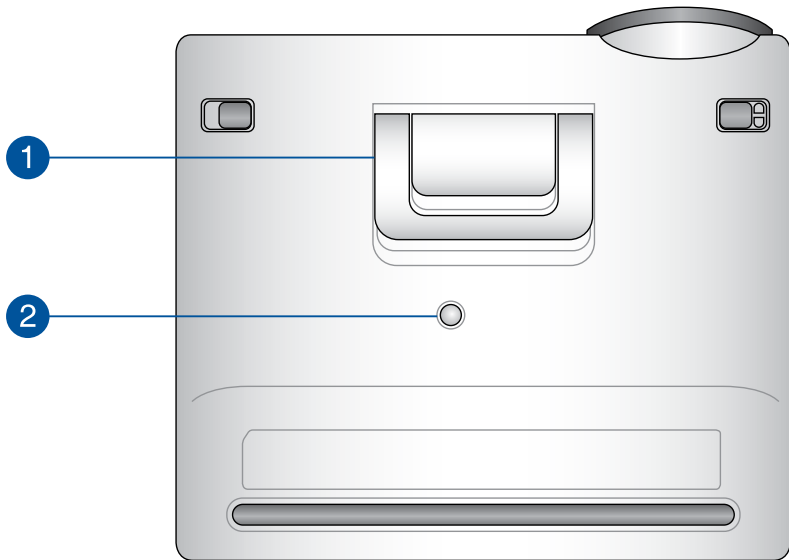


1 Air vents

The air vents allow cool air to enter and warm air to exit your LED projector.

WARNING! Ensure that paper, books, clothing, cables, or other objects do not block any of the air vents or else overheating may occur.

Bottom view



1 Built-in stand

This LED projector comes with a built-in stand that allows you to adjust the height of the projector by either 5 degrees or 9.5 degrees.

2 Tripod socket

Connect the LED projector to a tripod using this socket.

LED projector remote control



1 Control panel buttons

The control panel buttons allow you to navigate the onscreen display menu. Individually, these buttons also correspond to a specific LED projector setting.

NOTE: For more details on using the control panel buttons, refer to the *Using the onscreen display menu* section in this manual.

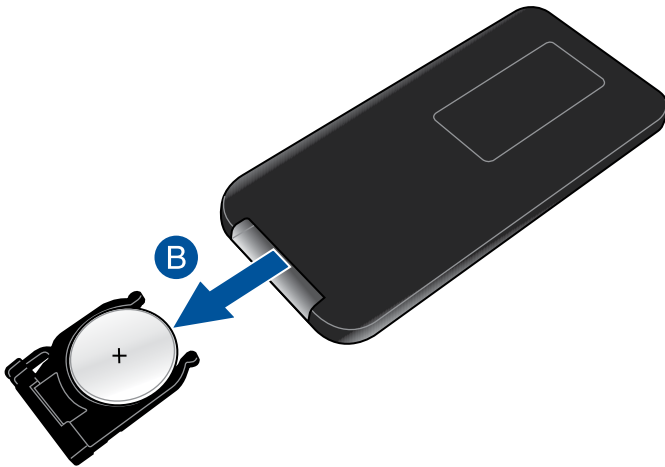
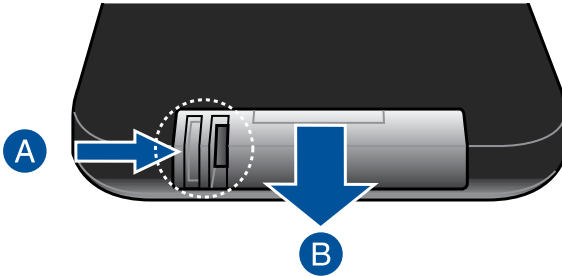
2 Battery compartment

The battery compartment allows you to use a CR2025 lithium coin battery to power your LED projector's remote control.

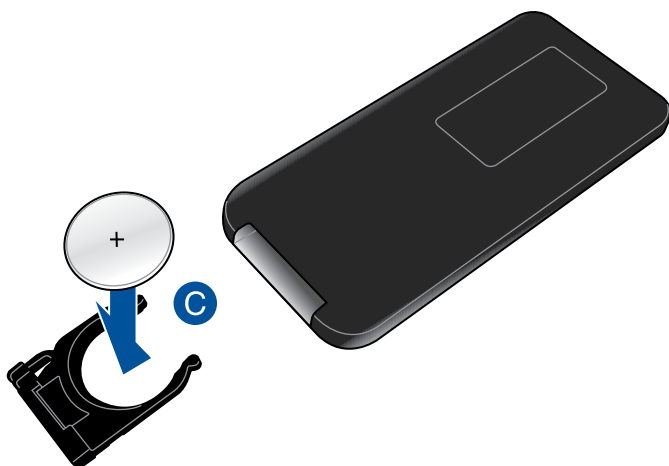
NOTE: For more details on using the battery compartment, refer to the *Replacing the battery* section in this manual.

Replacing the battery

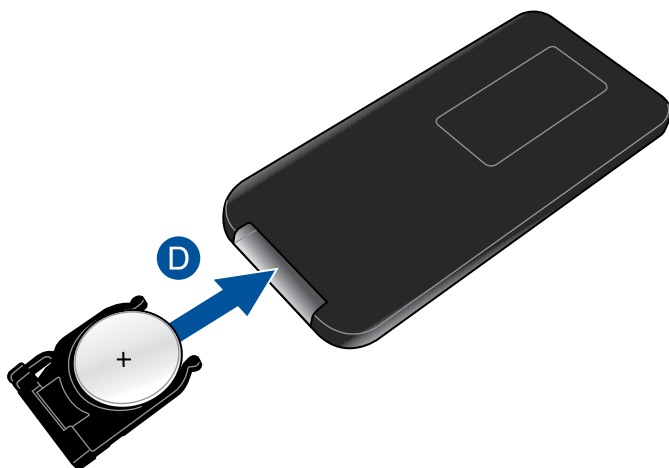
- A. Move the battery compartment's latch to the right to unlock the battery holder.
- B. Pull down the battery holder and remove it completely out of the battery compartment.



- C. Remove the old battery then insert the new CR2025 lithium coin battery into the battery holder with the positive side (+) facing up.



- D. Slide the battery holder back into the battery compartment. Push it all the way in until you hear a soft click, indicating that the battery compartment is locked back in place.



Chapter 2: ***Setting up***

Operating your LED projector

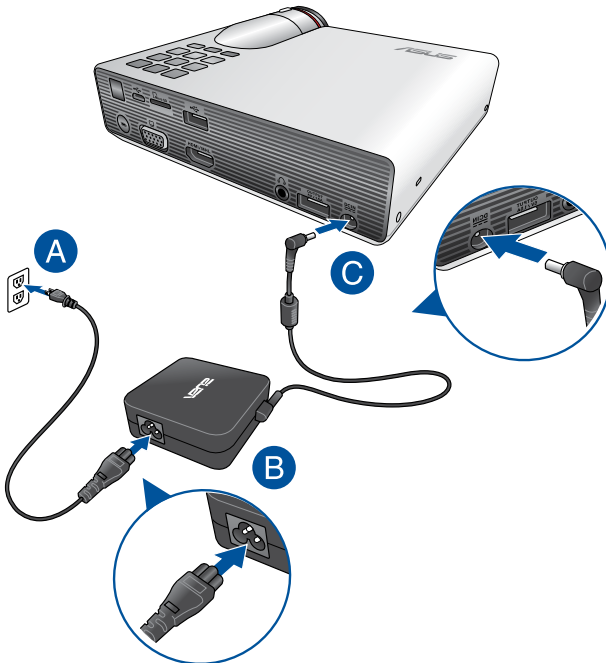
This portable LED projector allows you to plug and play your devices so you can easily open multimedia files, hear audio straight from its built-in SonicMaster speakers, and experience using Wi-Fi to project onscreen.

For your safety and to maintain the quality of this unit, refer to the following steps when operating your LED projector.

1. Connect the LED projector to the power adapter

- A. Connect the AC/DC power cord to the power adapter.
- B. Connect the AC power cord to a power source.
- C. Connect the DC power connector to your LED projector.

NOTE: This LED projector is also compatible with ASUS power adapters within the 65W to 95W range.

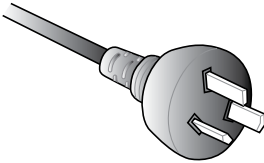


AC power cord requirements

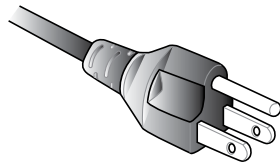
Use the correct AC plug type according to your current location.

IMPORTANT! Contact your sales dealer if the AC power cord bundled with your LED projector does not match your local power source.

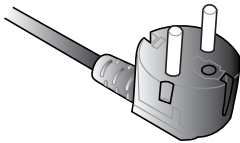
NOTE: We highly recommend that you use a video source device that also uses a grounding type plug to prevent signal interference due to voltage fluctuations.



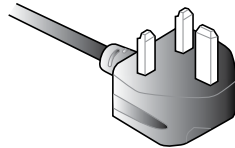
For Australia and Mainland China



For U.S.A., Canada, and Taiwan



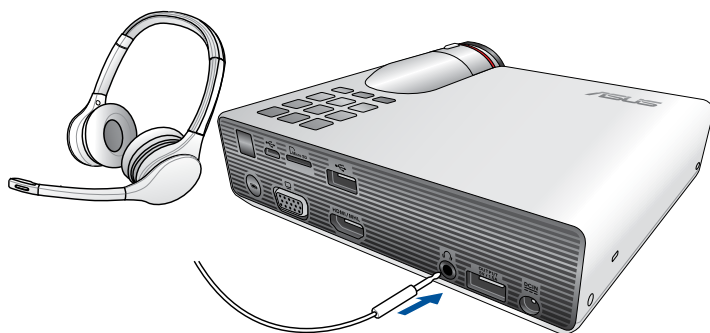
For Continental Europe



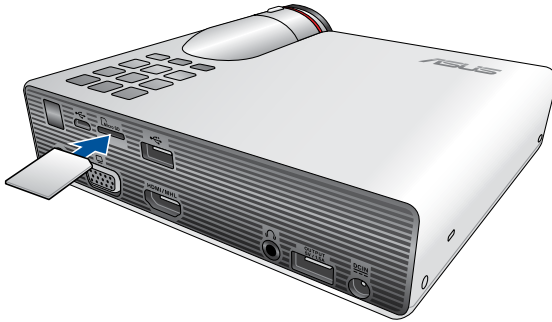
For U.K.

2. Connect the LED projector to your device

A. Audio output jack

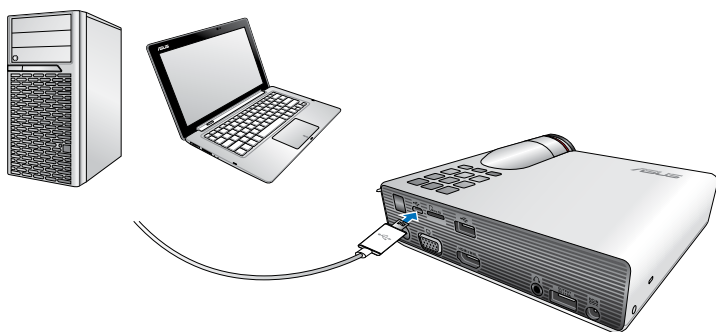


B MicroSD card

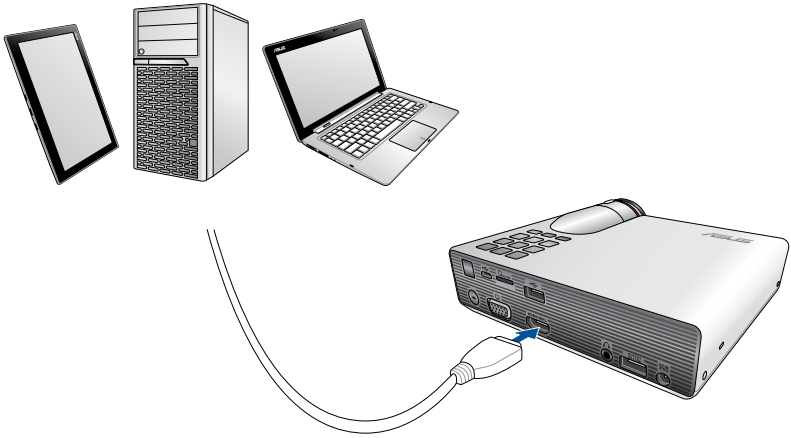


NOTE: For details on how to launch files from a memory card, refer to the *Launching the Media Center* section in this manual.

C Micro USB

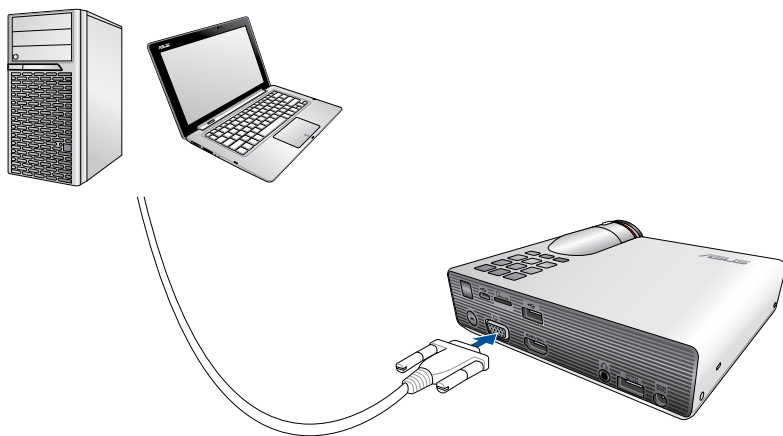


D. HDMI

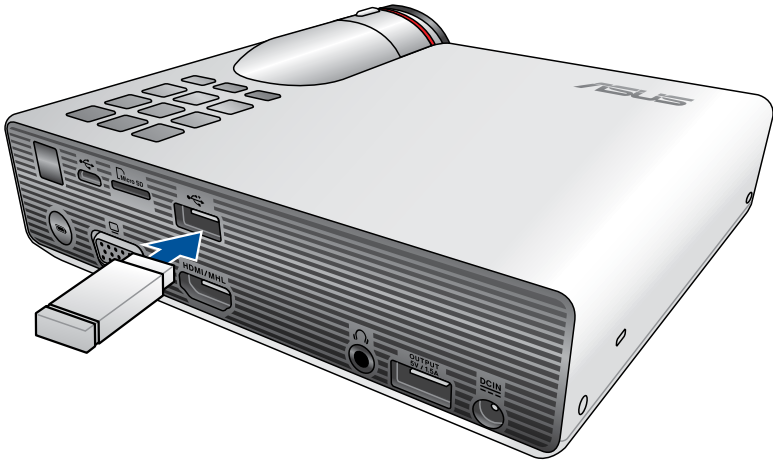


NOTE: Some mobile phone models may require a specific adapter for use with HDMI ports.

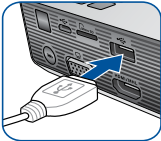
E. VGA



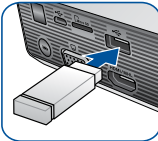
F. USB 2.0



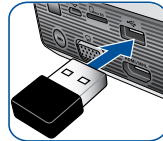
Compatible USB 2.0 input devices:



USB cable



Flash drive



Wi-Fi dongle

NOTE: For details on using the USB 2.0 port to launch supported file formats, refer to the *Launching the Media Center* section in this manual.

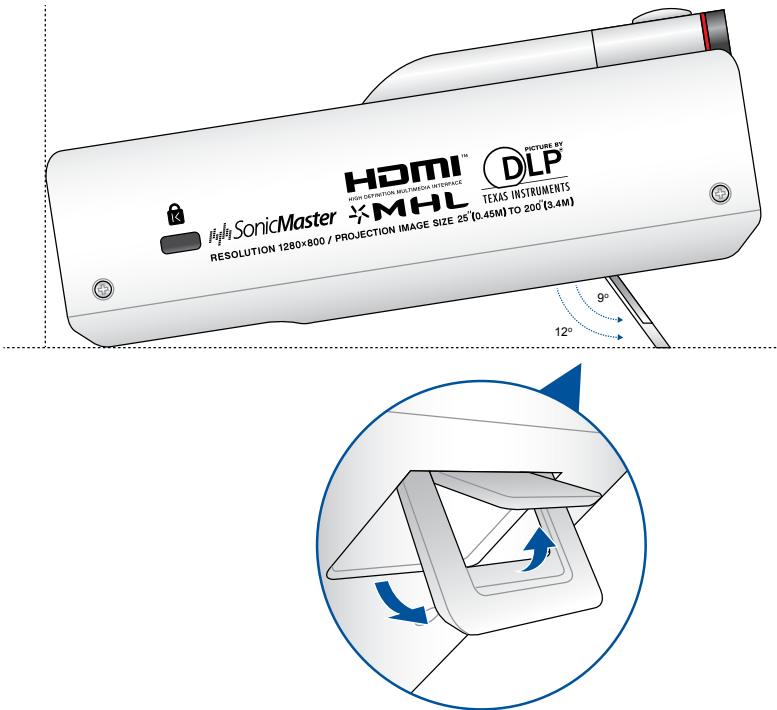
3. Adjust the height of the LED projector

Your LED projector comes with a built-in stand that helps adjust the image height onscreen.

WARNING! Ensure that the built-in stand is fully retracted before placing the LED projector inside the projector bag.

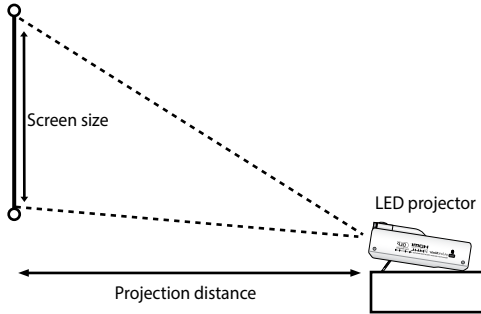
NOTES:

- Place the LED projector on a stable flat surface.
 - Keep a space of 30 cm or more between the sides of the LED projector.
 - Consult your dealer for special installation procedures like suspending the LED projector from the ceiling.
-



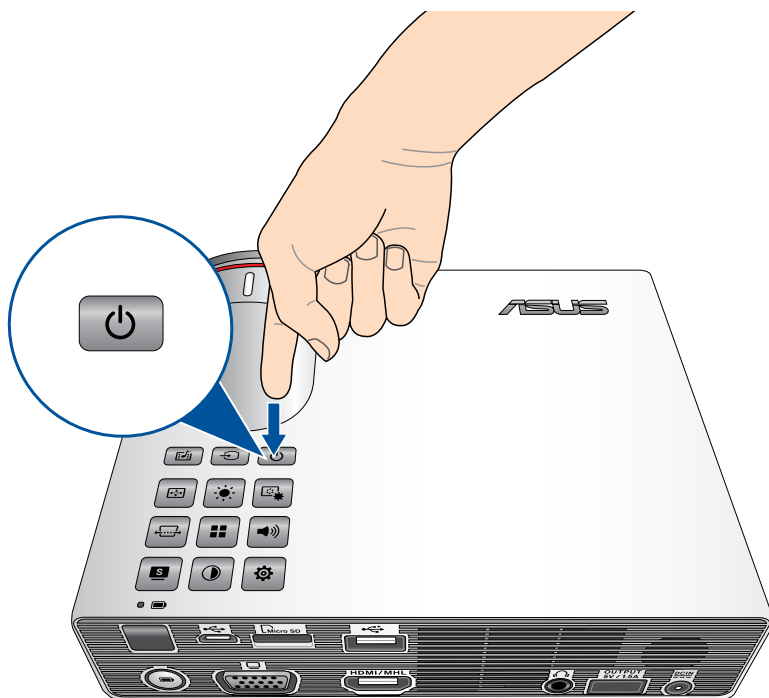
Screen size and projection distance table

Adjust the LED projector's distance from the screen using the table below.



Screen size - 16:10		Projection distance
(inches)	(millimeters)	(meters)
30	762	0.58
40	1016	0.78
60	1524	1.16
80	2032	1.55
100	2540	1.94
120	3048	2.33
140	3556	2.71
160	4064	3.10

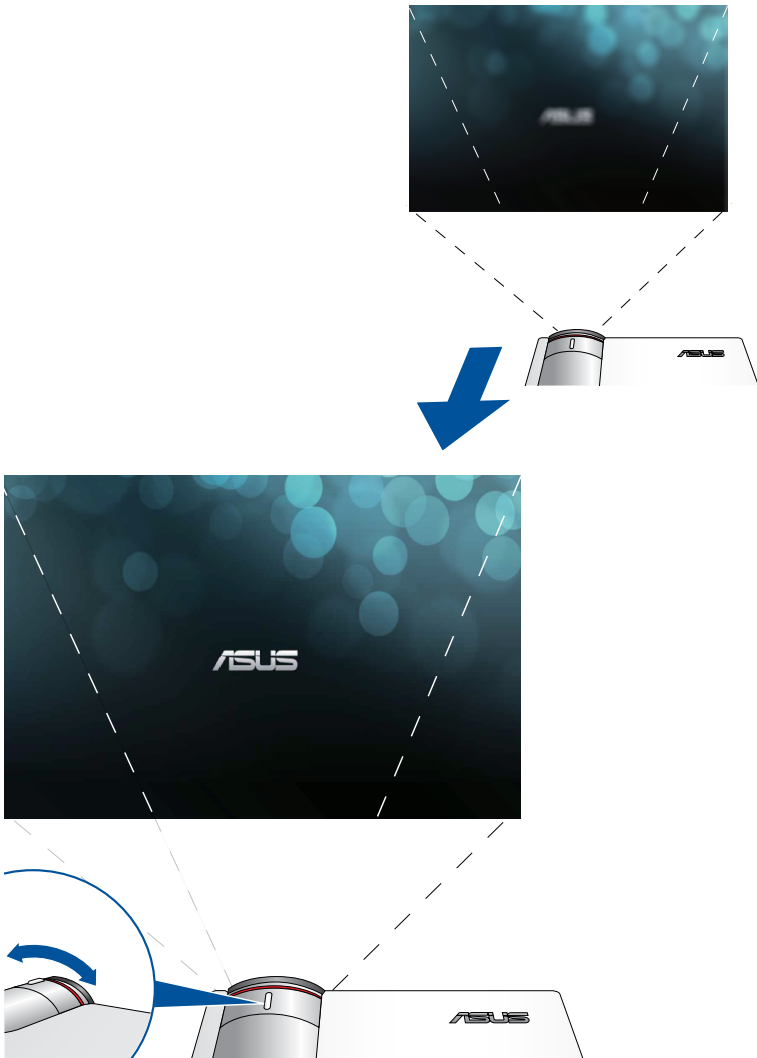
4. Press the power button



5. Adjust the image focus

Move the focus ring to the left or to the right to adjust the image focus.

NOTE: Use a still image when adjusting the onscreen display.



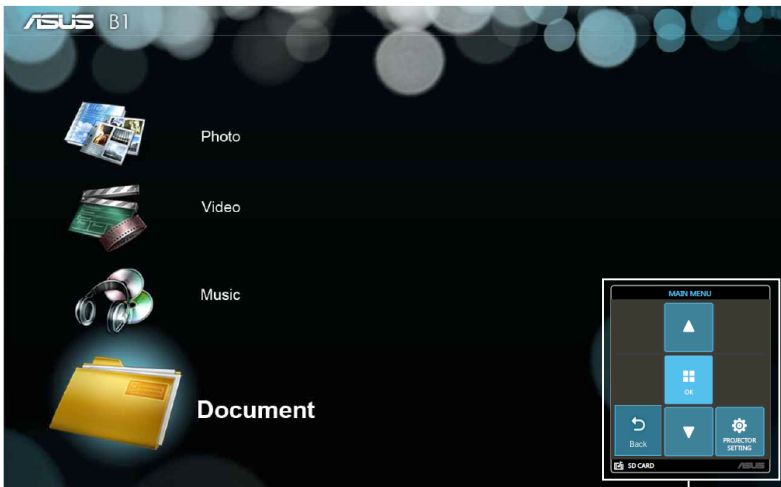
Chapter 3:
***Using the onscreen
display menu***

NOTE: The following screenshots are for reference only and may be updated without prior notice.

Launching programs from the onscreen display menu

The onscreen display menu contains a set of programs and settings designed to maximize your use of the LED projector. You can navigate inside the onscreen display menu using the control panel buttons on your LED projector or its accompanying remote control.

To launch options or programs shown on the onscreen display menu, refer to the control panel grid shown as below.



Control panel grid

Control panel grid

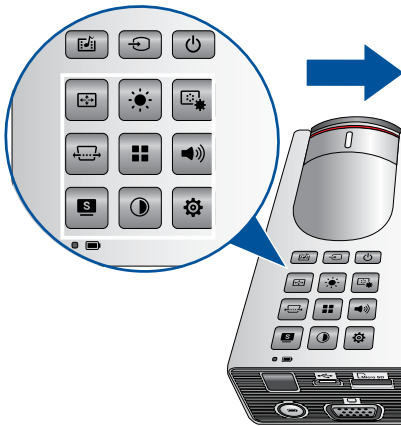
The control panel grid guides you through the process of using the control panel buttons to launch active options inside your onscreen display menu.

The control panel grid represents the 8 buttons surrounding the

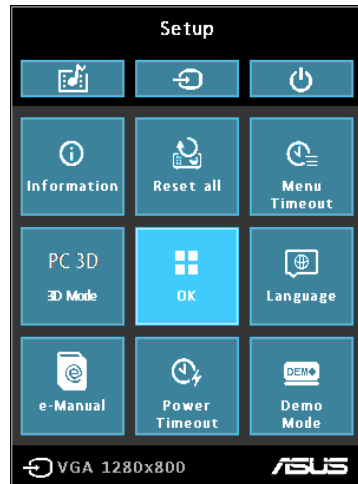


button on the control panel.

Control panel buttons



Control panel grid sample



Using your LED projector for the first time

Refer to the following steps when using your LED projector for the first time.

1. Set up your LED projector then press the power button once. The ASUS welcome screen appears to indicate that the LED projector is now turned on.
2. Using the control panel buttons, select the language you want to use in your LED projector.
3. In the Demo Mode control panel grid, select either of the following options:

On - This option launches the demo video of your LED projector. If you choose this, proceed to step 4.

IMPORTANT!


- This option automatically launches the Demo Mode control panel grid whenever you turn on your LED projector.
- When this option is enabled, your LED projector automatically launches the demo video.

NOTE: To know more about the functions of Demo Mode, refer to the *Using Demo Mode* section in this manual.

Off - This option disables viewing demo videos on your LED projector and proceeds to scan for connected input devices.

IMPORTANT! This option deactivates the Demo Mode control panel grid and instead launches the Input control panel grid whenever you turn on your LED projector.

NOTE: To know more about the functions of Demo Mode, refer to the *Using Demo Mode* section in this manual.

4. After watching the demo video or while watching the demo video, you can press  to proceed to scanning for connected input devices.

Accessing your LED projector's settings

Aside from using the control panel buttons to navigate the onscreen display menu, you can also use each of these buttons to launch the following LED projector settings:

IMPORTANT! Press **Projector Setting** on the control panel grid to use these functions in the Media Center.

Power

Press this button to turn the LED projector on or off.

Brightness

Press this button to adjust the brightness of your projection onscreen.

Keystone

Press this button to correct distorted images resulting from an angled projection.

Main Menu/OK

Press this button to launch the main menu of your LED projector settings, to activate a selected item, or exit the current control panel grid.

Volume

Press this button to adjust the volume of the audio file played on your LED projector.

Contrast

Press this button to set the difference between lighten or darken your projection onscreen.

Media Center

Press this button to launch the Media Center.

NOTE: For more details, refer to the *Using the Media Center* section in this manual.

Input

Press this button to scan the connected devices to your LED projector.





Splendid

Press this button to activate either of the following display modes:
Standard, Black Board, White Board, Dynamic, sRGB, Theater, Scenery.

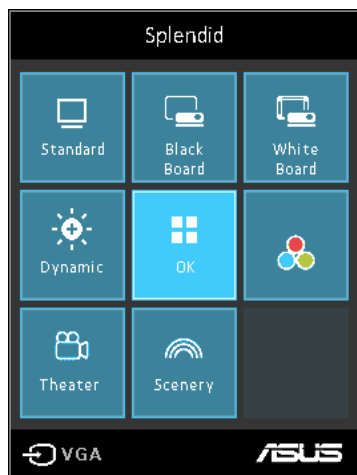
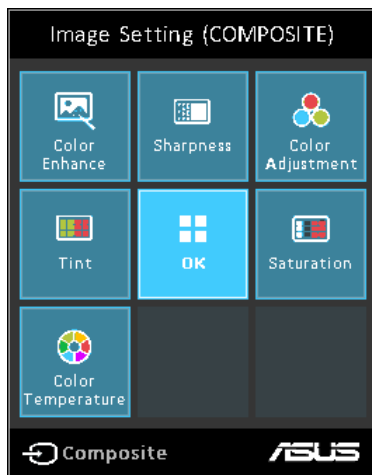
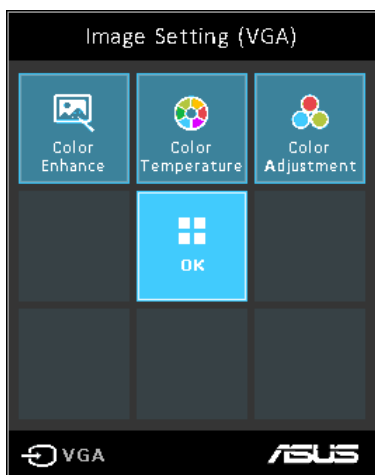




Image Setting

Press this button to access the following image settings:

NOTE: The available options under **Image Setting** varies between the VGA and Composite source.

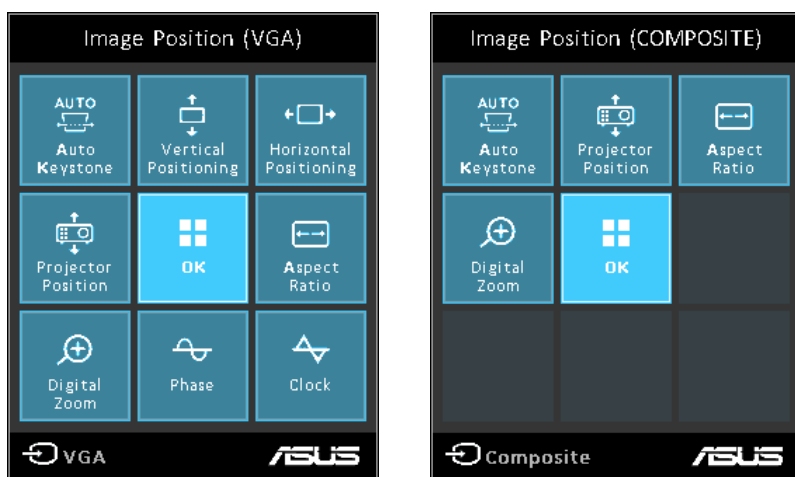


- **Color Temperature** - This option allows you to adjust the light temperature of your LED projector according to the following options: **Low, Medium, High**.
- **Color Adjustment** - This option allows you to adjust the color of your screen according to the following settings: Auto, RGB, YUV.
- **Color Enhance** - This option allows you to enhance the colors of your projected image.
- **Sharpness** - This option allows you to sharpen or soften the appearance of the projected image.
- **Saturation** - This option allows you to adjust the hue of the projected image.
- **Tint** - This option allows you to shift the colors onscreen towards red or green.



Image Position

Press this button to access the following image position settings:

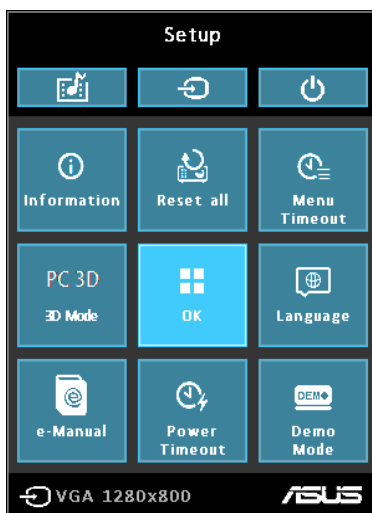


- **Auto Keystone** - This option allows you to automatically adjust the alignment of your image.
- **Horizontal Positioning** - This option allows you to shift the image's position horizontally.
- **Projector Position** - This option allows you to adjust the position of the projected image based from the location of your LED projector.
- **Vertical Positioning** - This option allows you to vertically shift the image position.
- **Aspect Ratio** - This option allows you to change the projection of your display according to the following aspect ratios: **AUTO**, **4:3**, **16:9**, and **16:10**.
- **Digital Zoom** - This option allows you to zoom in or zoom out your projected display. It also allows you to pan your image to the following directions: left, right, up, or down.

- **Phase** - This option allows you to adjust the number of lines emitted by the LED projector relative to the computer.
- **Clock** - This option allows you to adjust the frequency of the LED projector relative to the computer.

Setup

Press this button to access the following LED projector settings:



- **Information** - This option shows you the following information about your LED projector: currently used input port, LED projector's model name, and currently use Splendid mode.
- **Reset All** - This option allows you to reset all the settings you have currently set up for your LED projector.
- **Menu Timeout** - This option allows you to set the timeout rate, according to seconds, before the onscreen display menu disappears from your projection screen.
- **PC 3D** - This option allows you to use 3D glasses with your LED projector.
- **Language** - This option allows you to select the language to use on your LED projector's onscreen display menu.
- **E-Manual** - This option launches the LED projector's E-Manual.

- **Power Timeout** - This option allows you to set the number of minutes before your LED projector automatically shuts down when not in use.
- **Demo Mode** - This option turns the demo video features of your LED projector on or off.

NOTE: For more details, refer to the *Using Demo Mode* section in this manual.

Using 3D glasses

Your LED projector supports 3D technology for an enhanced viewing experience. Refer to the following details when using your purchased 3D glasses with this LED projector.

IMPORTANT: Purchase TI 3D-ready glasses. Your 3D files must be compatible with the TI 3D format.

NOTE: For more details on viewing 3D files, refer to the user guide that comes with your 3D glasses.

To view 3D files:

1. Download a compatible 3D player software on your computer.

IMPORTANT! Ensure that the software version supports 3D format conversion to frame sequential output via an HDMI/VGA port.

2. Turn on your 3D glasses.
3. Ensure your PC monitor is set to 1024 x 768 display resolution settings.
4. Connect your PC to the LED projector using the HDMI or VGA port, then enable **3D mode** on your LED projector.
5. Play the 3D file from your PC.

Using Demo Mode

View the internal demo video that comes with your LED projector or your own demo videos using Demo Mode.

Demo Mode is automatically enabled in your LED projector if you chose **On** when you turn on the device for the first time.

However, choosing **Off** disables this feature. In this case, you can enable this feature using the following steps.

Enabling Demo Mode

1. Launch the **Setup** control panel grid.
2. Choose **Demo Mode > On**.

IMPORTANT!

- This option automatically launches the Demo Mode control panel grid whenever you turn on your LED projector.
 - When this option is enabled, your LED projector automatically launches the demo video from its internal memory or from your SD card or USB drive as the LED projector goes into stand-by mode.
-

Creating and playing your own demo video

Your LED projector allows you to create simple demo videos using a series of photos presented as a slideshow. You may also add a background music to go with the slideshow as it plays onscreen.

Create your own demo video and play this on your LED projector using the following steps:

1. Create a folder named ASUS in your SD Card or USB drive.
2. Select the photos you want to include in your demo video and one music file (optional).

IMPORTANT! You may only choose one music file as your demo video's background music.

NOTE: Refer to the *Specifications* section in this manual to see the list of compatible photo and music file formats.


3. Copy the selected files inside the ASUS folder you created.
4. Connect the SD card or USB drive to your LED projector.
5. Turn on the LED projector. If Demo Mode is enabled, press **On** to play the demo video stored in the ASUS folder of your SD card or USB drive.

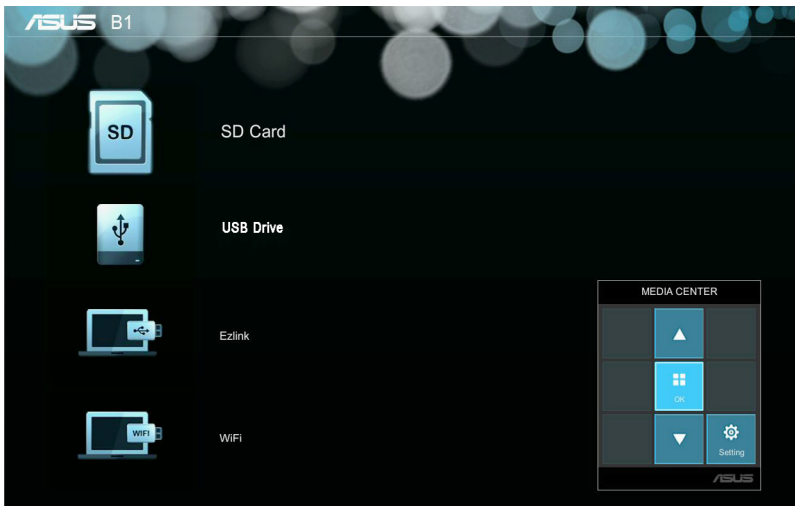
Using the Media Center

Show photos, play videos, listen to audio music, and view documents using your LED projector's Media Center. Through the Media Center, you can also access the Wi-Fi capabilities of your LED projector and connect to USB-enabled input devices.

Launching the Media Center

The Media Center automatically launches after the LED projector detects an SD card, external drive, or Wi-Fi dongle connection.

You can also manually launch the Media Center by pressing  from the control panel.



SD Card - Select this item to open files inside your memory card.

USB Drive - Select this item to open files inside your external drive.

Ezlink - Select this item to project from USB-connected input devices.

WiFi - Select this item to create a Wi-Fi connection between your device(s) and the LED projector. A Wi-Fi dongle is required to enable this feature.

Opening files from the SD Card or USB Drive

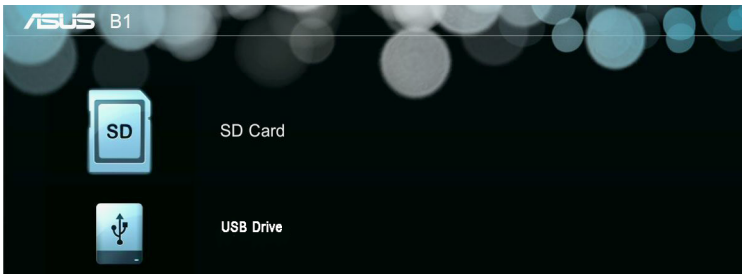
Photo

Supported image file formats:

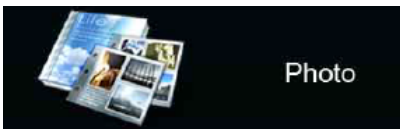
- JPG
- JPEG
- BMP (bitmap)



To open an image file:

1. Connect your input device to the LED projector.
2. Turn on the LED projector to launch the Media Center's onscreen display menu.
3. Select the input device you wish to access.



4. Select **Photo**.



5. Refer to the control panel grid to help you browse and select the file from your input device.
6. Press  to open the selected folder or file.
7. After opening the file, press  on the control panel to launch the control panel grid.

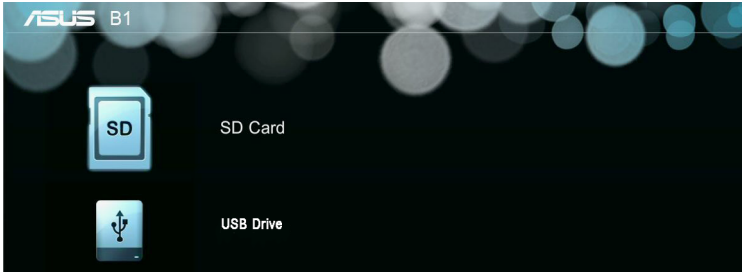
Video

File Type	Video Codec	Resolution	Bit Rate	Frame Rate	Audio Codec	Remarks
AVI MKV DIVX	DIVX4/5/6 XVID MPEG-2/4 H. 264 M-JPEG WMV3	1080P	280 Mbps	30 fps	AC3 DTS MPEG 1/2/3 PCM ADPCM AAC	No Support VC-1 AP H. 264 support less than 4 reference frames
TS	MPEG-2 H. 264	1080P	20 Mbps	30 fps	AC3 AAC MPEG 1/2/3 DTS LPCM	H. 264 support less than 4 reference frames
DAT VOB MPG MPEG	MPEG-1 MPEG-2	1080P	20 Mbps	30 fps	MPEG-1/2/3 AC3 DTS LPCM	-
MOV MP4 3GP	MPEG-4 H. 264 H. 263	1080P	20 Mbps	30 fps	AAC AMR PCM ADPCM	H. 264 support less than 4 reference frames
RM RMVB	RV3 RV4	720P	5 Mbps	30 fps	Cook (RA6) AAC (RA9) RACP (RA10)	-
WMV	WMV3	1080P	20 Mbps	30 fps	WMA2 WMA3	No Support VC-1 AP

NOTE: Supported file formats may vary per model and are subject to change without prior notice.



To open a video file:

1. Connect your input device to the LED projector.
2. Turn on the LED projector to launch the Media Center's onscreen display menu.
3. Select the input device you wish to access.



4. Select **Video**.



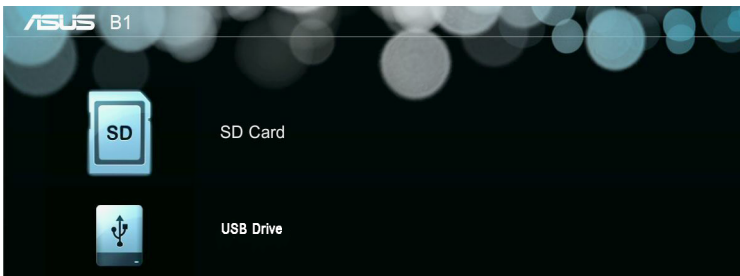
5. Refer to the control panel grid to help you browse and select the file from your input device.
6. Press  to open the selected folder or file.
7. After opening the file, press  on the control panel to launch the control panel grid.

Audio

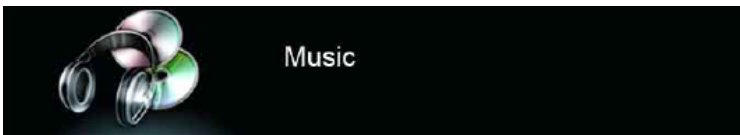
File Type	Sample Rate (KHz)	Bit Rate (Kbps)
MP1/ MP2/ MP3	8-48	8—320
WMA	22-48	5—320
OGG	8-48	64—320
ADPCM-WAV	8-48	32—384
PCM-WAV	8-48	128—1536
AAC	8-48	8—256



To play audio files, refer to the following steps:

1. Connect your device to the LED projector.
2. Turn on the LED projector to launch the Media Center's onscreen display menu.
3. Select the input device you wish to access.



4. Select **Music**.



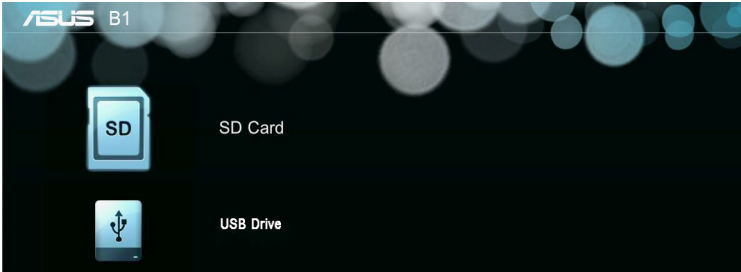
5. Refer to the control panel grid to help you browse and select the file from your input device.
6. Press  to open the selected folder or file.
7. After opening the file, press  on the control panel to launch the control panel grid.

Document

File Type	Support Version	Pages /Lines Limitation	Size Limitation	Comment
Adobe PDF	PDF 1.0 PDF 1.1 PDF 1.2 PDF 1.3 PDF 1.4	Up to 100 pages (One File)	Up to 75 MB	-
Microsoft® Office Word	Microsoft® Office Word 1995, Microsoft® Office Word 1997, Microsoft® Office Word 2000, Microsoft® Office Word 2002, Microsoft® Office Word 2003	Because the office viewer does not load all pages of a Microsoft® Word file at the same time, there are no obvious page or line limitations.	Up to 100 MB	Does not support bold text in Simplified Chinese font
Microsoft® Office Excel	Microsoft® Office Excel 1995, Microsoft® Office Excel 1997, Microsoft® Office Excel 2000, Microsoft® Office Excel 2002, Microsoft® Office Excel 2003, Microsoft® Office Excel 2007 (.xlsx), Microsoft® Office Excel 2010 (.xlsx) Microsoft® Office Excel XP	Row Limit: up to 595 Column Limit: up to 256 Sheet: up to 100 Note: These 3 listed limitations do not appear altogether in just one file.	Up to 15 MB	Does not support password-protected sheets
Microsoft® Office PowerPoint	Microsoft® Office PowerPoint 1997, Microsoft® Office PowerPoint 2000, Microsoft® Office PowerPoint 2002, Microsoft® Office PowerPoint 2003, Microsoft® Office PowerPoint 2007 (.pptx), Microsoft® Office PowerPoint 2010 (.pptx), Microsoft® Office PowerPoint XP, .ppx, .ppsx	Up to 100 pages (one file)	Up to 19 MB	Does not support slideshow order



To view documents, refer to the following steps:

1. Connect your device to the LED projector.
2. Turn on the LED projector to launch the Media Center's onscreen display menu.
3. Select the input device you wish to access.



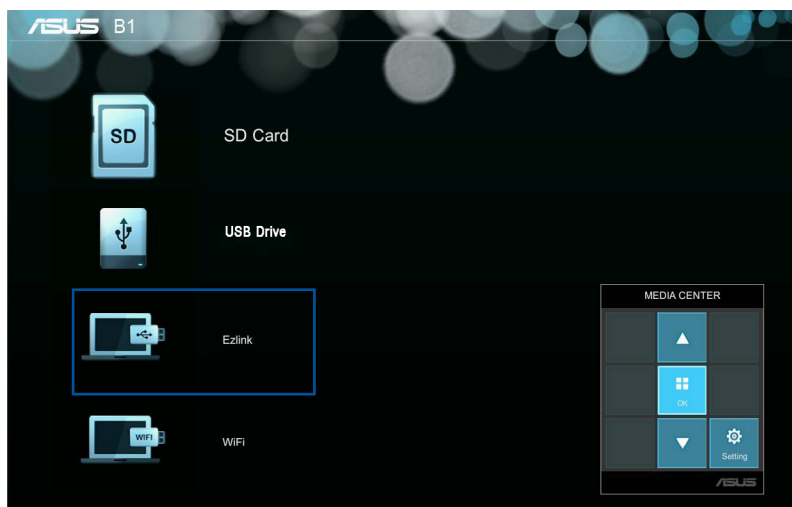
4. Select **Document**.



5. Refer to the control panel grid to help you browse and select the file from your input device. Press
6. Press  to open the selected folder or file.
7. After opening the file, press  on the control panel to launch the control panel grid.

Ezlink

This feature allows you to project from input devices, such as laptops and desktop computers, using a USB cable.




To project files using **Ezlink** you need to install **EZ Display** in your input device's operating system.

For Windows®:

1. Connect your LED projector to your device using a USB cable.
2. Turn on your input device and go to **My Computer**.
3. Select **EZ Display**> **EZ_USB_installer.exe**

Using Ezlink to project from your input device

1. Turn on your input device then connect to the LED projector using a USB cable.
2. Turn on the LED projector. If the Media Center does not automatically launch, press  on the control panel.
3. Select **EzLink**. Wait for the USB icon to appear onscreen to verify that the LED projector was successfully connected to your input device.
4. From your input device, select the **EZ-USB Mirror-only** icon to start projecting from your input device to the LED projector.

WiFi

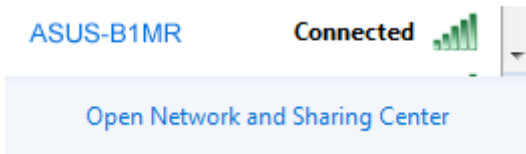
This feature enables wireless connections to your LED projector from input devices equipped with Wi-Fi capabilities like laptops and mobile phones.

IMPORTANT! A Wi-Fi dongle is required to enable this feature.

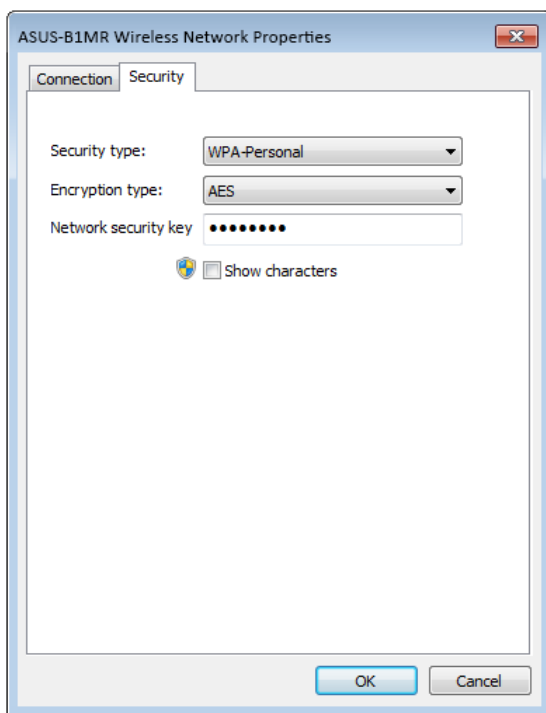
Installing the ASUS WiFi Projection

You need to install the ASUS WiFi Projection software to project from your input device using **WiFi**. Download this application using any of the following options:

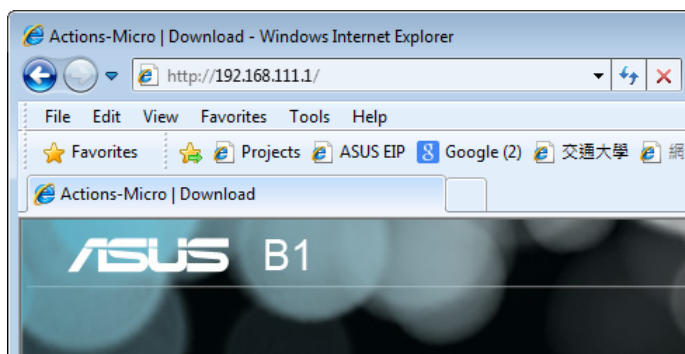
- If you are using an Android OS, download **ASUS WiFi Projection** from Google® Play Store.
- If you are using an iOS, download **ASUS WiFi Projection** from App Store.
- If you are using a laptop, tablet, or desktop PC, download the ASUS WiFi Projection software using the following steps:
 1. Turn on your device then select **ASUS-P3B** from the list of available wireless networks.



2. Type the password as shown on your LED projector.



3. After connecting your device, type in this IP address on your browser: **http://192.168.111.1**



4. Download ASUS WiFi Projection software from the IP address by clicking on either of the following icons.




NOTE: The ASUS WiFi projection software is compatible with Windows® 7, Windows® XP, Windows® Vista, and Mac® OS X. The list of compatible operating systems are subject to change without prior notice.

Using Display by AP mode

Using this mode, you can establish a one-to-one connection between your input device and your LED projector.

1. Connect the Wi-Fi dongle to your LED projector to launch the Media Center.

NOTE: If the Media Center does not automatically launch, press  then select **WiFi>Display via AP mode**.

2. Enable the WiFi connection in your input device. Select **ASUS-P3B** (default SSID) or the new SSID you configured for the P3B LED projector.

NOTE: You may also refer to the steps presented onscreen.


3. Type the password on your input device as shown on the LED projector to enable the AP mode connection.
4. Open **ASUS WiFi Projection** on your input device.
5. Select **Projector**.
6. Tap the feature you would like to use.





NOTE: The features are subject to change without prior notice due to software updates.

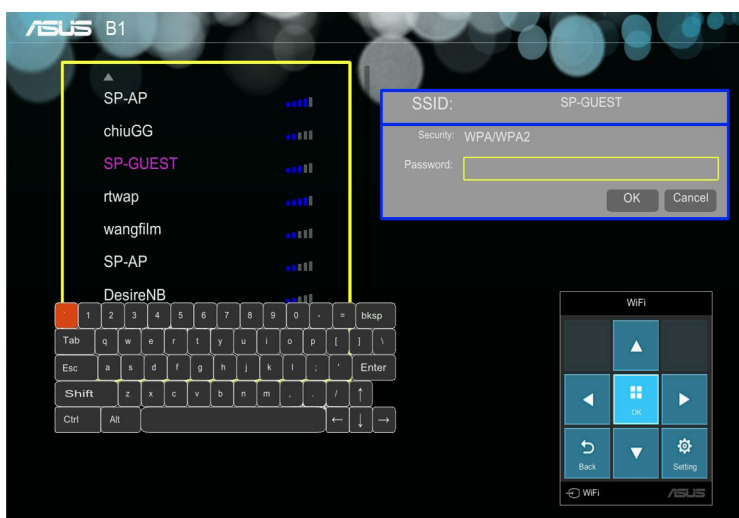
Using Display by Client mode

Using this mode, you can connect your LED projector to another Wi-Fi hotspot to enable group access when using the LED projector.

1. Connect the Wi-Fi dongle to your LED projector to launch the Media Center.

NOTE: If the Media Center does not automatically launch, press  then select **WiFi**.

2. Select **Display by Client mode**.
3. Press  to scroll up or  to scroll down the list of available Wi-Fi hotspots then press  to select the Wi-Fi hotspot you would like to connect to.
4. Press  to launch the onscreen display menu's keyboard. Refer to the control panel grid when navigating the keyboard to input the Wi-Fi hotspot's password then press **Enter**.



NOTE: The P3B LED projector supports WPA/WPA2-enabled devices.

5. Press **OK** to start the Wi-Fi connection between the Wi-Fi hotspot and your LED projector.
6. Repeat the same steps under *Using Display by AP mode* to connect input devices to the LED projector.

Using WiFi AP setting

This allows you to change the SSID, Security, and Password settings when using **Display by AP mode**.

Using WiFi Client setting

This scans the available WiFi hotspots that you can connect to your LED projector to enable the **Display by Client mode**.

Multi-language versions

Download other language versions of this E-Manual via this website: <http://support.asus.com>

Appendices

Federal Communications Commission Statement

This equipment has been tested and found to comply with the limits for a class B digital device, pursuant to Part 15 of the Federal Communications Commission (FCC) rules. These limits are designed to provide reasonable protection against harmful interference in a residential installation. This equipment generates, uses, and can radiate radio frequency energy and, if not installed and used in accordance with the instructions, may cause harmful interference to radio communications. However, there is no guarantee that interference will not occur in a particular installation. If this equipment does cause harmful interference to radio or television reception, which can be determined by turning the equipment off and on, the user is encouraged to try to correct the interference by one or more of the following measures:

- Reorient or relocate the receiving antenna.
- Increase the distance between the equipment and receiver.
- Connect the equipment to an outlet on a different circuit than that which the receiver is connected to.
- Consult the dealer or an experienced radio/TV technician for help.

This device complies with Part 15 of the FCC Rules. Operation is subject to the following two conditions:

1. This device may not cause harmful interference, and
2. This device must accept any interference that may cause undesired operation.

Regional notice for California

WARNING! This product may contain chemicals known to the State of California to cause cancer, birth defects or other reproductive harm. Wash hands after handling.

Canadian Department of Communications Statement

This digital apparatus does not exceed the Class B limits for radio noise emissions from digital apparatus set out in the Radio Interference Regulations of the Canadian Department of Communications.

This class B digital apparatus complies with Canadian ICES-003.

Global Environmental Regulation Compliance and Declaration

ASUS follows the green design concept to design and manufacture our products, and makes sure that each stage of the product life cycle of ASUS product is in line with global environmental regulations. In addition, ASUS disclose the relevant information based on regulation requirements.

Please refer to <http://csr.asus.com/english/Compliance.htm> for information disclosure based on regulation requirements ASUS is complied with:

Japan JIS-C-0950 Material Declarations

EU REACH SVHC

Korea RoHS

ASUS Recycling/Takeback Services

ASUS recycling and takeback programs come from our commitment to the highest standards for protecting our environment. We believe in providing solutions for you to be able to responsibly recycle our products, batteries, other components as well as the packaging materials. Please go to <http://csr.asus.com/english/Takeback.htm> for detailed recycling information in different regions.

Specifications for P3B LED projector

Display	Display Technology	0.45" DLP®
	Light Source	R/G/B LED
	Light Source Life	30,000 hours (max)
	True Resolution (native)	WXGA 1280x800
	Light Output	700 Lumens (AC mode), 500 Lumens (Battery mode)
	Contrast Ratio (typical)	3500:1 DCR
	Color Saturation (NTSC)	Typical 100%
	Display Colors	1.07 Billion Colors
Projection Lens	Throw Ratio	0.8@16:10 (58"@1m)
	Projection Distance	0.43 ~ 3.44 m
	Projection/Screen Size	25 ~ 200 inches
	Projection Offset	105 ± 5 %
	Zoom Ratio	Fixed
Video Features	Picture Modes	5 Modes (Standard Mode, Dynamic Mode, sRGB, Scenary Mode, Theater Mode)
	Keystone adjustment	Digital (Up to +/- 40 degree)
	Auto Keystone	Yes
	Aspect Ratio	16:10/ 16:9 / 4:3
	Projector Placement	Front Table, Rear Table, Front Ceiling, Rear Ceiling
Audio Features	Built-in speakers	Yes, 2W mono speaker
Signal Frequency	Analog Signal Frequency	31.5 ~ 91.1 KHz(H)/50 ~ 85 Hz(V)
	Digital Signal Frequency	31.5 ~ 91.1 KHz(H)/ 50 ~ 85 Hz(V)

(continued on the next page)

Power	Power On Mode	≤45W(Eco mode)/≤65W(Normal Mode)
	Standby Mode	<0.5W
Noise	Acoustic Noise	Normal mode: 32dBA - 34dBA Eco mode: 28dBA - 30dBA
Input or Output	PC Signal Input	D-sub, HDMI1.3 (HDCP support)
	Audio Out	Earphone out
	Card Reader	Yes (1 x SD card slot for multimedia playback)
	USB port	Yes (2 x Type A, up site for Service FW upgrade and Media features of USB WiFi dongle, USB display, USB thumb disk and 5V/0.5A charging, down site for 5V/1.5A charging; 1 x Micro USB for internal memory access)
Multimedia Formats Supported	Video	MOV/MP4/AVI/MKV/MPG/MPEG/WMV
	Audio	MP3/MP1/MP2/WMA/AAC/ADPCM-WAV/PCM-WAV
	Picture	JPG/JPEG/BMP
	Document Viewer	PDF/DOC/DOCX/XLS/PPT/PPTX/TXT

(continued on the next page)

Mechanical Design	Chassis Colors	White
	Tripod Socket	Yes
	Supporting Stand	Yes (tilt angle: $5\pm 1^\circ$ and $9.5\pm 1^\circ$)
	On-machine Buttons	Yes (Media Center, Input, Power, Image position, Brightness, Image quality, Keystone, Enter, Volume, Splendid, Contrast, Setup)
	Lens Cover	Yes
Security	Kensington lock	Yes
Dimension	Physical Dimension	153.5(W)x131.2(D)x43(H)mm
	Box Dimension	338(W)x225(D)x80(H)mm
Weight	Net Weight (Esti.)	<0.75 Kg
	Gross Weight (Esti.)	<2.3 Kg
Operating Temperature		0 ~ 40° C
Operating Humidity		20 ~ 90%
Accessories		carrying bag, power adapter, power cord, HDMI cable, Quick Start Guide, remote control, WiFi dongle (in specific countries), warranty card
Regulation Approvals		FCC/UL/CE/CB/CCC/CU/VCCI/PSE/RCM

* Specifications are subject to change without prior notice.

** Product availability may vary by region.

*** All brand and product names mentioned are trademarks of their respective companies.

Support PC Timings

DSUB Input

Resolution	Mode	Refresh rate (Hz)	H-frequency (kHz)	Clock (MHz)
720 x 400	720x400_70	70.087	31.469	28.322
640 x 480	VGA_60	59.94	31.469	25.175
	VGA_72	72.809	37.861	31.5
	VGA_75	75	37.5	31.5
	VGA_85	85.008	43.269	36
800 x 600	SVGA_56	56.25	35.156	36
	SVGA_60	60.317	37.879	40
	SVGA_72	72.188	48.077	50
	SVGA_75	75	46.875	49.5
	SVGA_85	85.061	53.674	56.25
1024 x 768	XGA_60	60.004	48.363	65
	XGA_70	70.069	56.476	75
	XGA_75	75.029	60.023	78.75
	XGA_85	84.997	68.667	94.5
1152 x 864	1152 x 864_75	75	67.5	108
1280 x 720	1280 x 720_60	60	45	74.25
1280 x 768	1280 x 768_60	59.87	47.776	79.5
1280 x 800	WXGA_60	59.81	49.702	83.5
	WXGA_75	74.934	62.795	106.5
	WXGA_85	84.88	71.554	122.5
1280 x 1024	SXGA_60	60.02	63.981	108
	SXGA_75	75.025	79.976	135
1280 x 960	1280 x 960_60	60	60	108
1440 x 900	WXGA+_60	59.887	55.935	106.5
1400X1050	SXGA+_60	59.978	65.317	121.75
640x480@67Hz	MAC13	66.667	35	30.24
832x624@75Hz	MAC16	74.546	49.722	57.28
1024x768@75Hz	MAC19	74.93	60.241	80
1152x870@75Hz	MAC21	75.06	68.68	100

CVBS Input

Video mode	Horizontal frequency (KHz)	Vertical frequency (Hz)
NTSC	15.73	60
PAL	15.63	50
SECAM	15.63	50
PAL-M	15.73	60
PAL-N	15.63	50
PAL-60	15.73	60
NTSC4.43	15.73	60

HDMI (PC)

Resolution	Mode	Refresh rate (Hz)	H-frequency (kHz)	Clock (MHz)
640 x 480	VGA_60	59.94	31.469	25.175
	VGA_72	72.809	37.861	31.5
	VGA_75	75	37.5	31.5
	VGA_85	85.008	43.269	36
720 x 400	720x400_70	70.087	31.469	28.322
800 x 600	SVGA_60	60.317	37.879	40
	SVGA_72	72.188	48.077	50
	SVGA_75	75	46.875	49.5
	SVGA_85	85.061	53.674	56.25
1024 x 768	XGA_60	60.004	48.363	65
	XGA_70	70.069	56.476	75
	XGA_75	75.029	60.023	78.75
	XGA_85	84.997	68.667	94.5
1152 x 864	1152 x 864_75	75	67.5	108
1280x720	1280 x 720_60	60	45	74.25
1280 x 768	1280 x 768_60	59.87	47.776	79.5
1280 x 800	WXGA_60	59.81	49.702	83.5
	WXGA_75	74.934	62.795	106.5
	WXGA_85	84.88	71.554	122.5
1280 x 960	1280 x 960_60	60	60	108
1360 x 768	1360 x 768_60	60.015	47.712	85.5
1440 x 900	WXGA+_60	59.887	55.935	106.5
1400X1050	SXGA+_60	59.978	65.317	121.75
640x480@67Hz	MAC13	66.667	35	30.24
832x624@75Hz	MAC16	74.546	49.722	57.28
1024x768@75Hz	MAC19	75.02	60.241	80
1152x870@75Hz	MAC21	75.06	68.68	100

HDMI (Video)

Timing	Resolution	Vertical frequency (Hz)	H-frequency (kHz)	Dot Clock frequency (MHz)
480i	720(1440) x 480	59.94	15.73	27
480p	720 x 480	59.94	31.47	27
576i	720(1440) x 576	50	15.63	27
576p	720 x 576	50	31.25	27
720/50p	1280 x 720	50	37.5	74.25
720/60p	1280 x 720	60	45	74.25
1080/50i	1920 x 1080	50	28.13	74.25
1080/60i	1920 x 1080	60	33.75	74.25
1080/50P	1920 x 1080	50	56.25	148.5
1080/60P	1920 x 1080	60	67.5	148.5