

SONY

RX100 VI



Eyes uncompromised. Close in on the action.

Cyber-shot

A man wearing a grey hoodie, a grey cap, and dark pants is captured in a dynamic pose, dribbling a basketball. He is positioned in the center of a large, ornate stone hallway with a series of repeating arches that create a strong sense of depth and perspective. The lighting is dramatic, highlighting the textures of the stone and the man's clothing.

RX100 VI

Expand your reach, and capture every moment

Be ready to take on the world. This pocket-size compact comes with no-compromise high-zoom performance and super-fast AF, so you can capture every opportunity that comes your way - just the way you want - and fully unleash your creative self-expression.

200mm*, 1/400 sec., F4.5, ISO 400
*35mm format equivalent

Zoom in on the moment, from wherever you are

24mm



24mm*, 1/400 sec., F4.5, +0.3 EV, ISO 125
* 35mm format equivalent.

200mm



200mm*, 1/100 sec., F4.5, ISO 200
* 35mm format equivalent.

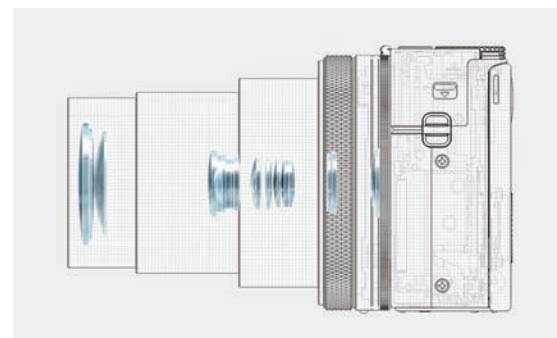
24-200mm* F2.8-4.5 zoom lens for uncompromising high-quality images

The newly designed ZEISS® Vario-Sonnar T* 24-200mm* F2.8-4.5 lens is configured with eight aspherical lens elements with 13 aspherical faces to achieve maximum resolution, clarity and contrast across the entire zoom range, out to the edge of the image. Four of Sony's original AA (advanced aspherical) elements help minimise spherical, coma and chromatic aberrations.

All this power is tucked into a compact, pocket-sized model that delivers broad zoom coverage, from wide to telephoto, with excellent resolution and high contrast. Bright maximum aperture (e.g. F4 at 100mm*) allows more rapid shutter speeds and large amounts of bokeh, even at maximum telephoto settings.

In addition, Clear Image Zoom lets you further enlarge the centre of the image digitally, up to twice as much (400mm* equivalent), with almost no image degradation.

* 35mm format equivalent.



Optical SteadyShot™ for stable shooting even at telephoto range

Optical image stabilisation technology developed exclusively by Sony prevents image blurring that can occur from hand-held still and movie shooting, especially in low light or at the far telephoto end of the zoom range. Image stabilisation is equivalent to a faster shutter speed of 4.0 stops¹ at 200mm² telephoto, and ensures smooth, stable framing and excellent image quality.

¹ CIPA standard, pitch/yaw directions, at 200mm (35mm format equivalent).

² 35mm format equivalent.



Without
Optical SteadyShot

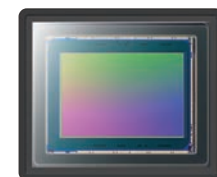
With
Optical SteadyShot

Key technologies for high-quality images

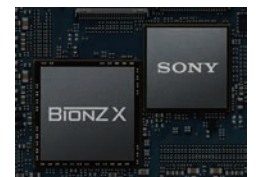
The 1.0-type stacked CMOS sensor employs back-illumination technology for increased light-collection efficiency, achieving a wide sensitivity range (ISO 80*-12800) with reduced noise. In addition, advances in the BIONZ X™ processing algorithm contribute to higher perceived resolution and lower noise levels. Together, these technologies are key factors supporting the camera's high image quality.

* ISO 80, 100: when expanded. For still shooting only.

Exmor RS
CMOS Sensor



BIONZ X



Fast, tenacious AF keeps up with quick-moving action

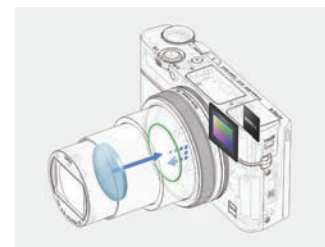


200mm*, 1/1000 sec., F4.5, ISO 125
* 35mm format equivalent.

0.03-sec* Fast Hybrid AF

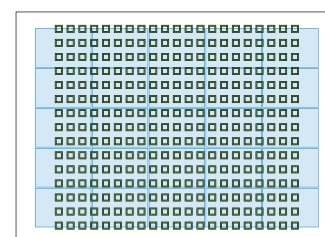
To achieve its amazing 0.03-sec* autofocus response, the RX100 VI combines the speed and tracking performance of focal-plane phase-detection AF with the impressive accuracy of contrast-detection AF. Even fast-moving subjects are easy to focus on, so you won't miss a moment of the action.

* CIPA standard, internal measurement, at f=9.0mm (wide-end), EV6.9, Program Auto, Focus mode: AF-A, Focus area: Center.



315-point wide-area phase-detection AF coverage

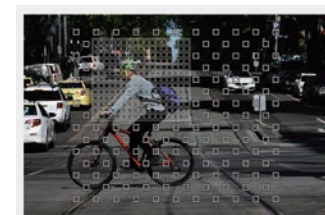
The 315 phase-detection AF points cover approx. 65% of the image area of the camera. With such wide-area high-density autofocus coverage, you can accurately focus on and capture any subjects, wherever they move within the frame.



■ Phase-detection AF coverage (315 points)
■ Contrast-detection AF coverage (25 points)

High-density Tracking AF Technology

In order to ensure accurate, stable tracking performance, this advanced technology leverages the benefits of focal-plane phase-detection sensors to concentrate AF points in a dense pattern around the subject location as it's moving. This keeps subjects in continuous clear focus as they move.



■ AF points that appear on actual screen
■ AF algorithm (not shown on actual screen)

Capture all the action, with 24fps*¹ continuous shooting



200mm*, 1/1250 sec., F4.5, ISO 200
* 35mm format equivalent.



Continuous shooting at 24fps*¹ with AF/AE tracking

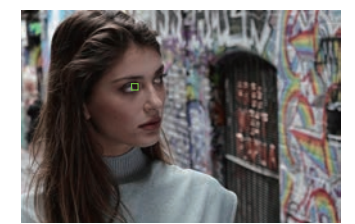
To ensure that you never miss the peak of the action, you can shoot continuously with AF/AE tracking at up to approx. 24fps*¹ for up to 233*² frames. The electronic viewfinder's accelerated display system response lets you view smoother video with reduced blackout and delay.

*¹ With "Continuous shooting mode: Hi".

*² With "Continuous shooting mode: Hi" and "Image quality: Fine".

Advanced Eye AF ideal for portrait shots

The Eye AF function has excellent tracking performance and a high degree of accuracy and stability as it automatically focuses on a subject's eyes, even when the subject is looking down or away from the camera, or is in backlit scenes when the face of the subject is in partial darkness.



Sophisticated features support fast, responsive shooting

Fast, simple, intuitive: Touch Focus and Touch Pad AF

With the Touch Focus function, just touch the LCD screen at the point in the image where you want to focus when you're shooting stills or movies. When you're monitoring with the viewfinder, the Touch Pad function lets you slide a finger on the LCD screen to shift focus. You can set preferences according to which eye and hand you want to use, how far to reach your finger, etc.



AF-A mode automatically switches focus modes

A combination of data for colour, brightness and phase-detection acquired by the camera is applied in AF-A mode to automatically switch between AF-S (Single AF: locks the focus while the shutter button is pressed halfway) and AF-C (Continuous AF: keeps focusing on subjects while the shutter button is pressed halfway) modes, responding as conditions change (such as when a subject starts moving).

Improved operability while writing to memory card

The Fn menu can be accessed and edited immediately after continuous shooting while data writing is in progress*, as can the menus and settings. It is also possible to immediately access the playback display, with the number of still images remaining to be written shown during playback.

* Not all menu parameters can be edited while data is being written to the memory card.

Rating and protect functions facilitate on-location sorting

Ratings of 1 to 5 stars can be applied to still images right from the camera controls, set via assigned custom buttons. Ratings are maintained when the images are imported into PlayMemories Home™ or Imaging Edge software running on a PC.

Display continuous-shooting images by group

Images shot in continuous mode can be displayed and reviewed in the groups in which they were shot. The play index display has been improved, and continuous groups can be deleted or protected in one quick operation, to save time on location.

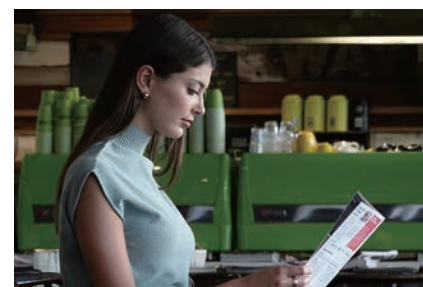
Anti-distortion shutter

The RX100 VI can suppress the rolling-shutter effect of fast-moving subjects such as swinging golf clubs or tennis rackets when shooting with shutter speeds of up to 1/32000 sec.

Silent shooting*

In noise-sensitive situations, you can simply mute the sound of the electronic shutter. Silent shooting is also possible in continuous shooting mode.

* Silent shooting can be activated via "Shutter type: Electronic" and "Audio signals: Off".



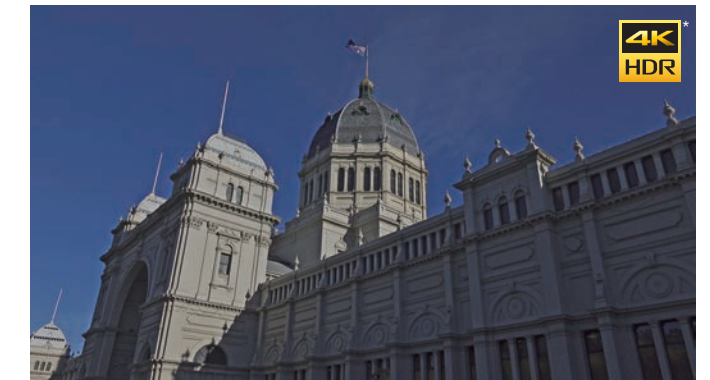
A diverse range of movie-making functions

HLG (Hybrid Log-Gamma) support for instant HDR workflow

Movies recorded using the HLG profile will appear true to life with no blocked shadows or blown highlights when played back on an HDR (HLG) compatible TV, without the need for colour grading. The BT.2020 colour space is supported, providing a wider colour gamut. On the other hand, when using colour grading, now S-Log3 is available in addition to S-Log2 for better gradation from shadows to mid-tones (18% grey). New colour spaces include S-Gamut3, offering improved colour reproduction over S-Gamut, and S-Gamut3.Cine, designed to look similar to scanned cinema-film negatives.



SDR



HDR (HLG)

* Connect this product to an HDR (HLG) compatible Sony TV via a USB cable to display HDR (HLG) movies.

Fast Hybrid AF for movies

Fast Hybrid AF enables accurate and smooth focusing even when recording movies, and you can achieve the highly accurate degree of focus required for 4K movies^{1,2}. AF drive speed and AF tracking sensitivity can be adjusted, so you can fine-tune focus-transition effects according to shooting conditions and artistic intent.

¹ A Class 10 or higher SDHC/SDXC memory card is required to record movies in the XAVC S format. A UHS-I (U3) SDHC/SDXC card is required for 100Mbps.

² Continuous recording time is approx. 5 minutes, and may vary with recording environment.

High-resolution 4K movie recording^{1,2}

The camera can record movies in 4K (QFHD: 3840 x 2160) with full pixel readout without pixel binning. Such movies condense approx. 1.7 times as much information as is minimally required for 4K movie output. This gives 4K movie images even more outstanding resolution, with reduced moiré and jaggies.

¹ A Class 10 or higher SDHC/SDXC memory card is required to record movies in the XAVC S format. A UHS-I (U3) SDHC/SDXC card is required for 100Mbps.

² Continuous recording time is approx. 5 minutes, and may vary with recording environment.

Professional-friendly movie-making features

For more advanced shooting and production, the RX100 VI supports and is compatible with various movie functions typically found in equipment for professional use, including Picture Profile, Gamma Display Assist, Zebra, clean HDMI output, TC/UB, Rec Control, Marker functions, and Proxy recording for simple net-based sharing and transferring to smartphones.

Super slow motion¹ duration at telephoto end

Shooting in telephoto, it's possible to record impressive super slow motion footage¹ where subjects are captured in close-up. Shooting frame rate (240fps, 480fps, 960fps)² and recording setting (24p, 30p, 60p)² can be set independently, allowing you to shoot between 4x and 40x super slow motion footage.

Frame Rate ²	Record Setting ²		
	24p 50M	30p/25p 50M	60p/50p 50M
240fps/250fps	10x slower	8x/10x slower	4x/5x slower
480fps/500fps	20x slower	16x/20x slower	8x/10x slower
960fps/1000fps	40x slower	32x/40x slower	16x/20x slower



¹ Audio recording is not available. A Class 10 or higher SDHC/SDXC memory card is required.

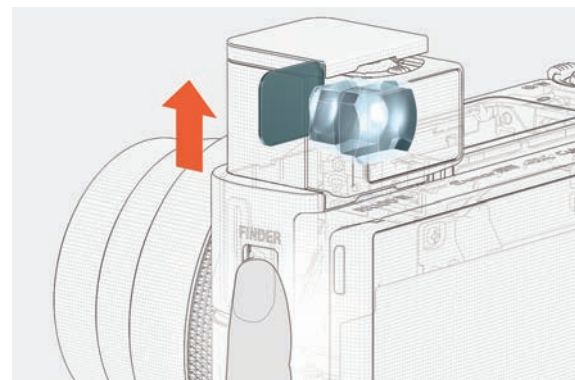
² In NTSC mode. Menu allows switching between NTSC and PAL modes.

Intuitive controls and features for smooth operation



One-push Access EVF

Simply depressing the viewfinder pop-up switch on the side of the body makes the built-in electronic viewfinder instantly usable, for increased convenience. The viewfinder's 2.35-million-dot-equivalent resolution shows the subtlest details with stunning contrast. ZEISS® T* Coating on the eyepiece optics ensures clear corner-to-corner viewing.



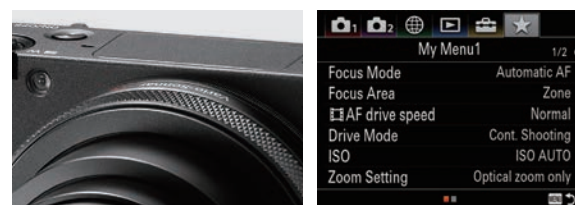
Touch Shutter compatible tiltable LCD monitor

For the first time in the RX series, the LCD monitor now incorporates the Touch Shutter, which allows you to intuitively activate the shutter simply by touching a point on the monitor. This makes it easier to shoot a scene when it might otherwise be difficult to press the shutter button, such as when shooting from high or low angles. The tilt angle of the monitor has also been expanded, so you can tilt the monitor roughly 180° upwards and 90° downwards, to enable monitoring of the subject for selfies or even when you're holding the camera high overhead above a crowd.



Control ring and convenient customising functions

Rotate the ring around the lens for smooth, intuitive control of shutter speed, aperture, and other still and movie functions. You can also program one of over 40 possible functions for the custom (C) button to adapt to your shooting conditions and style, for instant access to often-used functions. And with the My Menu feature you can customise a simple user menu of up to 30 items, arranged in any desired order for optimal convenience.



Location Information Link via Bluetooth^{*1}

After the camera has been paired to the PlayMemories Mobile™^{*2} app installed on a compatible mobile phone or tablet device, it can acquire location data from the mobile device and record that data to still images or movies. The PlayMemories Home application can then be used on a personal computer to organise images imported into the computer on a map.

^{*1} Can be connected via Bluetooth with smartphones featuring (as of the date of release):
 - Android (Android 5.0 or later, Bluetooth 4.0 or later)
 - iPhone/iPad (iPhone 4S or later/iPad 3rd generation or later)
 Please refer to <http://www.sony.net/pmm/btg/> for more information.
^{*2} Use the latest version of PlayMemories Mobile.

Wi-Fi® / NFC™ / QR code

With One-touch Remote, a smartphone or tablet can function as a viewfinder/remote control. One-touch sharing transfers photos/videos to the device. Just install a PlayMemories Mobile app via Wi-Fi to an NFC-enabled Android device, then touch the device to the camera to connect them. The camera also features QR code compatibility for easy connection with non-NFC smartphones.



Imaging Edge software suite from Sony

Sony's Imaging Edge software suite is designed to take maximum advantage of the potential inherent in Sony cameras for effortless shooting, extensive creative control, and unparalleled image quality. "Remote" allows tethered shooting with live viewing on the computer screen. "Viewer" is the perfect solution for viewing, rating, sorting, and generally managing an image library. And "Edit" is an advanced RAW processing tool that provides detailed image control as well as outstanding quality.



Accessories



Rechargeable Battery Pack NP-BX1

Battery Charger BC-TRX

Soft Carrying Case LCS-RXG

Attachment Grip AG-R2

Tripod VCT-P300

Remote Commander RM-VPR1

Screen Protect Glass Sheet PCK-LG1

Main specifications of DSC-RX100M6

Image Sensor	
Sensor Type	1.0-type (13.2mm x 8.8mm) Exmor RS CMOS sensor, aspect ratio 3:2
Number of Gross Pixels	Approx. 21.0 Megapixels
Number of Effective Pixels	Approx. 20.1 Megapixels
Lens	
Lens Type	ZEISS® Vario-Sonnar T* Lens, 15 elements in 12 groups (8 aspheric elements including AA lens)
F-number (Maximum Aperture)	F2.8 (W)-4.5 (T)
Iris Diaphragm	7 blades
Focal Length (f=)	f=9.0-72mm
Focal Length (f=)	[Still image 3:2] f=24-200mm, [Still image 4:3] f=25-220mm, [Still image 16:9] f=24-210mm, [Still image 1:1] f=30-260mm [Movie 16:9] f=24-210mm (SteadyShot Standard), f=26-230mm (SteadyShot Active), f=29-260mm (SteadyShot Intelligent Active), [Movie 4K 16:9] f=26-230mm (SteadyShot Standard), [HFR 960fps] f=35-310mm (Quality Priority), f=48-420mm (Shoot Time Priority), [HFR 480fps] f=24-210mm (Quality Priority), f=34-290mm (Shoot Time Priority), [HFR 240fps] f=24-210mm (Quality Priority), f=24-210mm (Shoot Time Priority)
35mm format equivalent	
Focus Range (from the front of the lens)	AF (W: Approx. 8cm (0.27 ft.) to Infinity, T: Approx. 100cm (3.29 ft.) to Infinity)
Optical Zoom	Still Image Movie
Clear Image Zoom ¹⁾	Still Image Movie
Digital Zoom ¹⁾	Still Image Movie
Screen	
Screen Type	7.5cm (3.0 type) (4:3) / 921,600 dots / Xtra Fine / TFT LCD
Touch Panel	Yes
Brightness Control	Manual (5 steps) / Sunny Weather
Adjustable Angle	Up by approx. 180 degrees, down by approx. 90 degrees
Viewfinder	
Screen Type / Number of Dots	0.39-type electronic viewfinder (OLED), 2,359,296 dots
Brightness Control	Auto, Manual (5 steps)
Field Coverage	100%
Magnification	Approx. 0.59x with 50mm lens at infinity, -1m ⁻¹ (dioptre) (35mm equiv.)
Eye Point	Approx. 20mm from the eyepiece, 19.8mm from the eyepiece frame at -1m ⁻¹ (dioptre) (CIPA standard)
Dioptre Adjustment	-4.0 to +3.0m ⁻¹
Camera	
SteadyShot	Optical
Optical SteadyShot Active Mode (for Movie)	Yes (Intelligent Active Mode, Optical type with electronic compensation, Anti Rolling type)
Focus Mode	Single-shot AF / Automatic AF / Continuous AF / DMF / Manual Focus
Focus Area	Wide (315 points (phase-detection AF), 25 points (contrast-detection AF)) / Zone / Center / Flexible Spot (S/M/L) / Expanded Flexible Spot / Lock on AF (Wide/Zone/Center/Flexible Spot (S/M/L)/Expanded Flexible Spot)
Lock on AF	Yes
Light Metering Mode	Multi Pattern / Center Weighted / Spot / Entire Screen Avg / Highlight
Exposure Compensation	+/- 3.0 EV, 1/3 EV step
Exposure Control	Yes
ISO Sensitivity (Still Image) ²⁾	Auto (ISO125-12800, selectable with upper/lower limit), 125/160/200/250/320/400/500/640/800/1000/1250/1600/2000/2500/3200/4000/5000/6400/8000/10000/12800 (Extendable to ISO80/100), Multi-Frame NR: Auto (ISO125-12800), 200/400/800/1600/3200/6400/12800/25600 ³⁾
ISO Sensitivity (Movie)	Auto: (ISO125 Level-ISO12800 Level, selectable with upper/lower limit), 125/160/200/250/320/400/500/640/800/1000/1250/1600/2000/2500/3200/4000/5000/6400/8000/10000/12800
Minimum Illumination (Movie)	Auto: 2.9 lux (Shutter Speed 1/30")
White Balance Mode	Auto / Daylight / Shade / Cloudy / Incandescent / Fluor.: Warm White / Fluor.: Cool White / Fluor.: Day White / Fluor.: Daylight / Flash / Underwater Auto / C.Temp. / Filter / Custom
WB Micro Adjustment	Yes <G7 to M7, 57-step> <A7 to B7, 29-step>
Shutter Speed	iAuto (4"-1/2000) / Program Auto (30"-1/2000) / Manual (Bulb, 30"-1/2000) / Aperture Priority (30"-1/2000) / Shutter Priority (30"-1/2000)
Electronic Shutter	iAuto (4"-1/32000) / Program Auto (30"-1/32000) / Manual (30"-1/32000) / Aperture Priority (30"-1/32000) / Shutter Priority (30"-1/32000)
Image Control	Contrast, Saturation, Sharpness, Creative Style, Color Space (sRGB/Adobe RGB), Quality (RAW/RAW+JPEG (Extra fine, Fine, Standard)) / JPEG (Extra fine, Fine, Standard)
Noise Reduction	Long exposure NR: On/Off, available of shutter speeds longer than 1/3 sec. / High ISO NR: Normal/Low/Off / Multi Frame NR: Auto, ISO200-25600
Dynamic Range Functions	Off, Dynamic Range Optimizer (Auto/Level 1-5), Auto High Dynamic Range (Auto Exposure Difference, Exposure Difference Level (1.0-6.0EV, 1.0EV step))
Shooting Mode	AUTO (Intelligent Auto/Superior Auto), Program Auto, Aperture Priority, Shutter Speed Priority, Manual Exposure, MR (Memory Recall) [body 3 sets / memory card 4 sets], Movie Mode (Program Auto, Aperture Priority, Shutter Speed Priority, Manual Exposure), HFR Mode (Program Auto, Aperture Priority, Shutter Speed Priority, Manual Exposure), Panorama, Scene Selection
Scene Selection	Portrait, Sports Action, Macro, Landscape, Sunset, Night Scene, Handheld Twilight, Night Portrait, Anti Motion Blur, Pet Mode, Gourmet, Fireworks, High Sensitivity
Continuous Shooting Speed (maximum) (Maximum number of recorded pixels) ⁴⁾⁵⁾	Continuous Shooting Hi: approx. 24 fps, Continuous Shooting Mid: approx. 10 fps, Continuous Shooting Low: approx. 3.0 fps ⁶⁾
Self-Timer	10 sec. / 5 sec. / 2 sec. / 3 or 5 consecutive shots with 10 sec. 5 sec. or 2 sec. delay selectable / Bracketing shots with 10 sec. 5 sec. or 2 sec. delay selectable
Drive Modes	Single, Continuous shooting (Hi/Mid/Low), Self-timer, Self-timer (cont.), Cont.-bracketing ⁷⁾ , Single-bracketing ⁷⁾ , White balance bracketing ⁷⁾ , DRO bracketing ⁷⁾
Panorama	Sweep Panorama
Picture Effect	[Still Image] Toy camera, Pop Color, Posterization, Retro Photo, Soft High-key, Partial Color, High Contrast Mono, Soft Focus, HDR Painting, Richtone Monochrome, Miniature, Watercolor, Illustration [Movie] Toy camera, Pop Color, Posterization, Retro Photo, Soft High-key, Partial Color, High Contrast Mono
Creative Style	Standard, Vivid, Neutral, Clear, Deep, Light, Portrait, Landscape, Sunset, Night Scene, Autumn Leaves, Black & White, Sepia, Style Box
Picture Profile	Off/PP1-PP10 (Black Level, Gamma (Movie, Still, Cine1-2, ITU709, ITU709 (800%), S-Log2, S-Log3, HLG, HLG1, HLG2, HLG3), Black Gamma, Knee, Color Mode, Saturation, Color Depth, Color Phase, Detail, Copy, Reset)
Number of Recognized Scenes	[Still Image] Superior Auto: 44 / iAuto: 33 [Movie] 44
Flash	Flash Mode
	Flash Range

Environmental Information

Halogenated flame retardants are not used in cabinets and certain printed wiring boards. Recycled paper is used for the carton. Corrugated cardboard and paper are used for the packaging cushions.

SONY, Cyber-shot®, Exmor RS®, "BRAVIA", "SteadyShot", "InfoLithium", "Tru-Finder", "Memory Stick", "Memory Stick PRO Duo", "Memory Stick PRO-HG Duo", "PlayMemories Home", "PlayMemories Mobile", "TRILUMINOS", "TRILUMINOS Color", "TRILUMINOS Display" and "XAVC S" are trademarks or registered trademarks of Sony Corporation.

All other company and product names mentioned herein are used for identification purposes only and may be the trademarks or registered trademarks of their respective owners.

- * Screen displays are simulated.
- * Simulated effects are used to illustrate some functions.
- * Features and specifications are subject to change without prior notice.

Recording	
Compatible Recording Media ⁸⁾	Memory Stick Duo, Memory Stick PRO Duo, Memory Stick PRO Duo (High Speed), Memory Stick PRO-HG Duo, Memory Stick Micro ⁹⁾ , Memory Stick Micro (Mark2) ¹⁰⁾ , SD Memory Card, SDHC Memory Card (UHS-I), SDXC Memory Card (UHS-I), microSD Memory Card ⁹⁾ , microSDHC Memory Card ⁹⁾ , microSDXC Memory Card ⁹⁾
Recording Format	[Still Image]: JPEG (DCF Ver. 2.0, Exif Ver. 2.31, MPF Baseline compliant), RAW (Sony ARW 2.3 format) [Movie]: XAVC S ¹⁰⁾ , AVCHD format Ver. 2.0 compatible
Recording Format (Movie Audio)	XAVC S ¹⁰⁾ : LPCM 2ch / AVCHD: Dolby Digital (AC-3) 2ch (Dolby Digital Stereo Creator)
Color Space (Still)	sRGB / Adobe RGB
DCF / DPOF	DCF / DPOF / EXIF / MPF
Still Images: Number of recorded pixels (Image Size)	3:2 mode: 20M (5,472x3,648) / 10M (3,888x2,592) / 5M (2,736x1,824), 4:3 mode: 18M (4,864x3,648) / 10M (3,648x2,736) / 5M (2,592x1,944) / VGA, 16:9 mode: 17M (5,472x3,080) / 7.5M (3,648x2,056) / 4.2M (2,720x1,528), 1:1 mode: 13M (3,648x3,648) / 6.5M (2,544x2,544) / 3.7M (1,920x1,920), Sweep Panorama: Wide (12,416x1,856/5,536x2,160), Standard (8,192x1,856/3,872x2,160)
Still Images: Number of recorded pixels (Image Size) during Movie recording	16:9 mode: 17M (5,472x3,080) / 7.5M (3,648x2,056) / 4.2M (2,720x1,528)
Movie Recording Mode	NTSC
	PAL
HFR	NTSC
	PAL
Playback	
Maximum Playback Size	Under 20M (5,472 x 3,648)
Print	
Exif Print	Yes
PRINT Image Matching (PIM3)	Yes
Interface	
Input and Output Terminal	Multi / Micro USB Terminal ¹¹⁾ , Hi-Speed USB (USB2.0), Micro HDMI
NFC	NFC Forum Type 3 Tag compatible, One-touch remote, One-touch sharing
Wi-Fi	Yes (IEEE802.11b/g/n (2.4GHz band))
Bluetooth	Yes (Bluetooth Standard Ver. 4.1 (2.4GHz band))
Power	
Power Source	DC3.6V (supplied battery) / DC5.0V (supplied AC adaptor)
Battery System	Rechargeable battery pack NP-BX1
Power Consumption (camera mode)	Approx. 2.3W with LCD monitor and approx. 2.5W with viewfinder (CIPA standard)
USB Charge / USB Power Supply	Yes (Shooting, Playback)
Battery Life (CIPA)	[Still Images] ¹²⁾ Monitor: Approx. 240 / Approx. 120min., Monitor (When Auto Monitor off is set to 2 sec): Approx. 310 / Approx. 155min., Viewfinder: Approx. 220 / Approx. 110min. [Movies (actual shooting)] ¹³⁾¹⁴⁾ Monitor: Approx. 40min., Viewfinder: Approx. 40min. ¹⁵⁾ Movies (continuous shooting) ¹⁵⁾ Monitor: Approx. 75min., Viewfinder: Approx. 70min. ¹⁵⁾
Others	
PlayMemories Camera Apps	-
Shooting Functions	Eye AF / Face Detection / Face Registration / Still Image Recording (during movie recording) / Smile shutter / Grid Line / Quick Navi / Digital Level Gauge (pitch and roll) / WB Bracket / DRO Bracketing / MF Assist / Peaking / Zebra / Marker Display / Micref Level / Step Zoom/Quick Zoom / Self-portrait timer / TC/UB / Photographer Name & Copyright / ISO Auto Minimum Shutter Speed / PC Remote Control / Gamma Disp. Assist / [MOV] AF Track Sensitivity / [Mov] AF Drive Speed / Set File Name / Touch Shutter / My Menu
Playback Functions	BRAVIA Sync (Control for HDMI) / 9/25-frame index view / Auto Orientation / Slide Show / Forward / Rewind (Movie) / Delete / Protect / Motion Shot Video / Beauty Effect / Photo Capture / Rating
TRILUMINOS Color ¹⁶⁾	Yes
4K Image Output	Yes
Operating Speed	Start-up time (approx. 1.4 sec.) / Shooting time lag (approx. 0.07 sec.) / Shooting interval (approx. 0.36 sec.)
Digital Level Gauge	Yes (Pitch and roll)
Dimensions (W x H x D) (CIPA compliant)	101.6 x 58.1 x 42.8mm (4 in. x 2 3/8 in. x 1 11/16 in.)
Weight (CIPA compliant)	Approx. 301g (10.7oz.) (with battery and memory card included) / Approx. 274g (9.7oz.) (Body Only)
Supplied Accessories	Rechargeable Battery Pack NP-BX1 / AC Adaptor / Micro USB cable / Wrist Strap / Strap adaptor / Instruction Manual

Specifications and features are subject to change without notice.

- Optical zoom from wide side.
- REI = Recommended Exposure Index.
- Achieved by using overlay burst shooting.
- You may not be able to shoot images in Burst mode depending on the Shooting mode.
- Continuous shooting speed will be reduced when used together with built-in flash.
- Speed will decrease after some shots have been taken.
- Self-Timer is available.
- For movies, compatible Memory Stick PRO Duo (Mark2), Memory Stick PRO-HG Duo, Memory Stick XC-HG Duo, Memory Stick Micro (Mark2), SD/SDHC/SDXC memory card or microSD/microSDHC/microSDXC card (Class 4 or faster speed is recommended) can be used.
- With Adaptor (optional)
- A Class 10 or higher SDHC/SDXC memory card is required to record movies in the XAVC S format. A UHS-I (U3) SDHC/SDXC card is required for 100Mbps.
- Supports Micro USB-compatible device.
- The LCD screen is turned on, shooting once every 30 seconds, the zoom is switched alternately between the W and T ends, the flash strobes once every two times, the power turns on and off once every ten times.
- Continuous shooting is possible for approximately 29 minutes (limited by product specifications, default setting).
- Indication of recording time, which is defined by repeating the cycle: Power on, start recording, zoom, stand-by, power off.
- Based on non-stop recording until the limit (29 minutes or 4GB) has been reached, and then continued recording again. Shooting functions such as zoom will not be available.
- Models capable of extended-gamut recording and HDMI transmission function for both still images and movies.

<http://www.sony.net/digitalimaging/>

Sony | Photo Gallery:

http://www.sony.net/Products/di_photo-gallery/



Sony | Camera Channel:

<https://www.youtube.com/c/ImagingBySony>



Printed in Japan