



Widescreen LCD Monitors

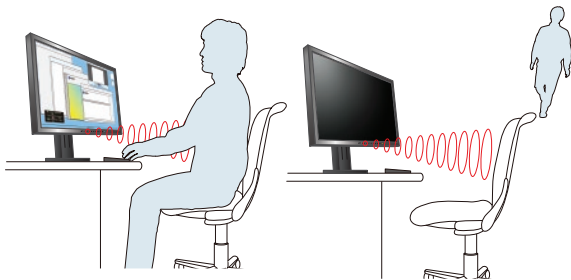
FlexScan EcoView

The future of the energy saving office



Presence Sensor for Power Savings

EIZO's new EcoView Sense feature unites convenience with savings by ensuring that these monitors automatically conserve power when they are not in use. EcoView Sense is a built-in presence sensor that prompts the monitor to switch to power save mode when it doesn't detect anyone for 40 seconds with the EV2303W and EV2023W, or 70 seconds with the EV2333W and EV2313W, and then resume normal operation when the user returns. To accurately enter and stay in power save mode while the user is away from the monitor, EcoView Sense also differentiates between a still object like an empty chair and the movement caused by general office activity.



EcoView Sense automatically signals the screen to activate and stay on, or switch to power save mode by detecting the user's presence or absence.

Inside EIZO R&D

“ Original EIZO-developed (patent pending) algorithms allow EcoView Sense's automatic detection function to differentiate between animate and inanimate objects as well as people just passing by. The sensor's highly accurate position tracking has been achieved by adopting a special lens that suppresses diffused reflections of infrared rays and through factory-performed sensor adjustment on each monitor. ”



Takashi Murata, Group Leader
R&D Visual Products

Optimized Brightness with Auto EcoView

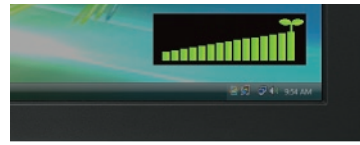
A built-in Auto EcoView sensor measures ambient light and optimizes the screen's brightness to ideal levels in both brightly and dimly lit rooms. This results in improved visual ergonomics and reduced power consumption by up to 40% compared to when the sensor is turned off.

Zero Watts When Turned Off

When the power save mode and off timer are set, the EV2303W and EV2023W consume less than 0.7 watts and the EV2333W and EV2313W consume less than 1 watt of power. When turned off via the main power switch, they consume no electricity at all.

Confirm Energy Efficiency with EcoView Index

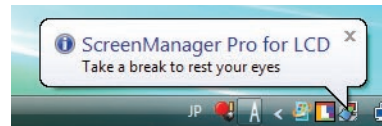
An EcoView Index displays the level of energy efficiency in correlation with the monitors' brightness to encourage environmental consciousness while working.



When EcoView Index is fully illuminated, the monitor is operating at optimum energy efficiency.

EyeCare Manager

EIZO's EyeCare Manager prompts workers to take scheduled breaks to avoid eye fatigue caused by prolonged monitor use. EyeCare also totals and displays on-screen the monitors' usage hours for each day and month to promote worker appreciation of improved work habits.



EyeCare reminds workers to take regular breaks to prevent eye fatigue.

Eco-Friendly LED Backlight, Lower Power Consumption

The EV2313W incorporates a mercury-free LED (light-emitting diode) backlight. With the LED backlight and Auto EcoView in use, the monitor consumes just 16 W during typical operation. This is a 60% power decrease compared to a previous CCFL (cold cathode fluorescent lamp) backlit 22-inch EIZO monitor.

Product Life Cycle Ecology

These monitors debut an innovative compact design that reduces the number of internal components, making them thinner and lighter than previous FlexScan 20" and 24" widescreen models. This allows the monitors to be shipped in smaller containers which use between 80% to 100% recycled material. These considerations made during product development, in tandem with the monitors' EcoView features, reduce environmental burden at each stage of the products' life cycle.



Compared to a previous FlexScan 24" widescreen monitor, the FlexScan EV2303W's slimmed-down cabinet design cuts the use and weight of sheet metal components, shown here, by up to 90%.



These monitors' new compact cabinet design is thinner and lighter than that of previous FlexScan widescreen models.

Improved Efficiency, Reduced Visual Fatigue

EIZO conducted a survey in 2008 to establish the relationship between eye fatigue and monitor use. Results showed that features like Auto EcoView, ergonomic stands, and the EyeCare Manager helped reduce eye fatigue and improved work efficiency by 12.5%.

For a white paper regarding this study please visit www.eizo.com/support/wp/pdf/wp_08-001.pdf

16:9 Aspect Ratio

These are the first FlexScan models to feature 16:9 aspect ratios. The 16:9 wide format is the same aspect ratio used by HDTV and it lets you enjoy multimedia content without horizontal letterboxing.

Next Generation Connectivity

DisplayPort connectivity with the EV2333W and EV2313W allows digital audio and video signal transmission via a single, high-bandwidth cable at distances up to 15 meters without any signal degradation.



Fine Contrast for Optimum Viewing

EIZO's Fine Contrast function has five modes: Text mode for office applications, Movie mode for video, Picture mode for graphics, sRGB mode for web browsing, and Custom mode for user-defined settings.

Placement Flexibility

EIZO introduces two new ergonomic stands: the highly-versatile FlexStand and the space-saving TriStand. Both stands offer tilt, swivel and height adjustment. The FlexStand also offers portrait rotation, laptop-like screen placement, and at 225 mm, the industry's greatest range of height adjustment.* The FlexStand features an innovative, bearing-less design that reduces mechanical wear and the amount of torque required to adjust height. A quick release feature on the FlexStand allows for easy monitor reconfiguration.

*Statement reflects EIZO's internal findings as of August 20, 2009.



FlexStand
height & tilt

FlexStand
portrait mode

FlexStand
quick release

Accessories

Available accessories include mounting arms and panel protectors.

For compatibility information please visit www.eizo.com/products/accessories/

Eco Savings with FlexScan EV2333W

67% Reduction in Power Consumption

With an installation of 100 FlexScan EV2333W monitors used for 8 hour workdays, 250 days a year for five years (the warranty period), you can expect to save¹:

Power Reductions:

36,250 kWh

CO₂ Emissions Reductions:

20,120 kg²

Trees Needed to Consume This CO₂:

1,437 trees³

Cost Savings:

833,715 JPY^{4,5}

(= 6,195 EUR or 8,825 USD)
(1 EUR = 134 JPY; 1 USD = 94 JPY)⁶

¹ Based on expected savings compared to using the FlexScan S2231W at a brightness of 100% in typical office lighting conditions, and without EcoView Sense activated. ² Calculated from figures obtained from the Japanese Ministry of Economy, Trade and Industry, Agency for Natural Resources and Energy, and Ministry of Environment where one kWh of electricity produces 0.555 kg of CO₂. ³ Calculated from figures obtained from the Japanese Ministry of Agriculture, Forestry and Fisheries where one tree (Japanese cedar) absorbs approximately 14 kg of CO₂ per year. ⁴ Calculated at a cost of 1.8 JPY/kg of CO₂ for per cap and trade emission credit. ⁵ Calculated at a cost of 22 JPY/kWh based on figures published by Tokyo Electric Power Company effective August 2009. This is approximately 0.17 EUR/kWh or 0.24 USD/kWh as of August 20, 2009. ⁶ Based on exchange rates as of August 20, 2009. This usage example is provided for estimating purposes only. Actual energy savings may vary based on use and other factors.

Reduced Network Power Consumption

An accessory software utility, EIZO's EcoView NET offers business users centralized control over the power settings of networked monitors to help reduce electricity consumption and provide a smaller carbon footprint.

For more see www.eizo.com/products/accessories/lcd/ecoview_net/

Customer Assurance

A five-year manufacturer's warranty offers a long service life, and compliance with leading environmental and industry standards such as TCO Displays 5.0, EPEAT Gold, and TÜV Ergonomics ensures a better work environment. The EIZO Eco Products 2009 label indicates these products meet strict internal requirements for design, manufacturing, packaging, usage and power consumption. All monitors in this brochure are Vista compatible. The Windows 7 Certified label indicates the EV2313W is Windows 7 compatible.



EV2333W
EV2313W
EV2303W
EV2023W



FlexScan EV2333W

FlexScan EV2313W

FlexScan EV2303W

FlexScan EV2023W

Model Variations	FlexStand, TriStand			
Panel Size	23" / 58 cm (584 mm diagonal)		20" / 51 cm (508 mm diagonal)	
Active Display Size (H × V)	509.8 × 286.7 mm		442.8 × 249.1 mm	
Panel Type	VA (with overdrive circuit)	TN (with overdrive circuit)	TN	VA
Viewing Angles (H, V)	178°, 178° (at contrast ratio of 10:1)		170°, 160° (at contrast ratio of 10:1)	
Brightness	300 cd/m ²		250 cd/m ²	
Contrast	3000:1		1000:1	
Response Time (Typical)	Gray-to-gray: 7 ms, black-white-black: 25 ms	Gray-to-gray: 4 ms, black-white-black: 5 ms	Gray-to-gray: –, black-white-black: 5 ms	Gray-to-gray: –, black-white-black: 25 ms
Native Resolution	1920 × 1080 (16: 9 aspect ratio)		1600 × 900 (16: 9 aspect ratio)	
Pixel Pitch	0.2655 × 0.2655 mm		0.2768 × 0.2768 mm	
Display Colors	16.77 million from a palette of 1.06 billion			
Cabinet Colors	Gray, Black			
Dot Clock	Analog: 148.5 MHz, Digital: 148.5 MHz		Analog: 108 MHz, Digital: 108 MHz	
Analog Scanning Frequency (H, V)	31 – 81 kHz, 55 – 76 Hz		31 – 68 kHz, 55 – 76 Hz	
Digital Scanning Frequency (H, V)	31 – 68 kHz, 59 – 61 Hz (VGA Text: 69 – 71 Hz)		31 – 60 kHz, 59 – 61 Hz (VGA Text: 69 – 71 Hz)	
Video Input Terminals	D-Sub mini 15 pin, DVI-D 24 pin (with HDCP), DisplayPort (with HDCP)		D-Sub mini 15 pin, DVI-D 24 pin (with HDCP)	
Audio Input Terminals	3.5 mm stereo jack			
Audio Output Terminals	3.5 mm headphone jack			
Speakers	0.35 W speaker		0.45 W speaker	
Plug & Play	VESA DDC 2B			
Power Requirements	AC 100 – 120 V / 200 – 240 V, 50 / 60 Hz			
Power Consumption	45 W (maximum) 25 W (typical)	32 W (maximum) 16 W (typical)	33 W (maximum) 18 W (typical)	40 W (maximum) 25 W (typical)
Power Save Mode	Less than 1.0 W		Less than 0.9 W	
Height Adjustment Range	With FlexStand: 225 mm (171.3 mm at 0° tilt) With TriStand: 60 mm		With FlexStand: 225 mm (192.5 mm at 0° tilt) With TriStand: 60 mm	
Tilt / Swivel / Pivot	With FlexStand: 30° Up, 0° Down / 172° Right, 172° Left / 90° With TriStand: 25° Up, 0° Down / 172° Right, 172° Left / 90°			
Dimensions (W × H × D)	With FlexStand: 547 × 346.5 – 517.8 × 221 – 236 mm With TriStand: 547 × 382 – 442 × 200 mm		With FlexStand: 476 × 306.5 – 498 × 219 – 236 mm With TriStand: 476 × 362 – 442 × 200 mm	
Net Weight	With FlexStand: 7.1 kg With TriStand: 5.5 kg Without Stand: 4.3 kg	With FlexStand: 6.2 kg With TriStand: 4.6 kg Without Stand: 3.4 kg	With FlexStand: 6.9 kg With TriStand: 5.3 kg Without Stand: 4.1 kg	With FlexStand: 6.7 kg With TriStand: 5.1 kg Without Stand: 3.9 kg
Preset Modes	Fine Contrast (Text, Picture, Movie, sRGB, Custom), Auto Fine Contrast ¹			
EcoView Settings	Auto EcoView, EcoView Index, EcoView Sense			
Screen Adjustment	Clock, Phase, Position, Range (Auto), Screen Size (full screen, enlarge, normal), Smoothing (5 stages), Border Intensity		Clock, Phase, Position, Range (Auto), Signal Filter, Screen Size (full screen, enlarge, normal), Smoothing (5 stages), Border Intensity	
Color Adjustment	Brightness, Contrast, Gamma, Temperature, Saturation, Hue, Gain, Overdrive, Reset		Brightness, Contrast, Gamma, Temperature, Saturation, Hue, Gain, Reset	
Power Management	Power Save (VESA DPMS, DisplayPort Rev. 1.1a, and DVI DMPM), Off Timer			
Sound	Volume, Power Save, Source (DisplayPort)		Volume, Power Save	
Other Settings	Signal Switching, Product Information (name, serial number, resolution, operating time, etc.), OSD Menu Settings, Adjustment Lock, DDC/CI, Languages (English, French, German, Italian, Japanese, Simplified and Traditional Chinese, Spanish, Swedish), Power Indicator, Reset			
Certifications and Standards	TCO Displays 5.0, EPEAT Gold, TÜV/Ergonomics (including ISO 13406-2), TÜV/GS, c-Tick, CE, CB, UL (cTÜVus), CSA (cTÜVus), FCC-B, Canadian ICES-003-B, TÜV/S, VCCI-B, EPA Energy Star, RoHS, WEEE, EIZO Eco Products 2009	TCO Displays 5.1, EPEAT Gold, TÜV/Ergonomics (including ISO 13406-2), TÜV/GS, c-Tick, CE, CB, UL (cTÜVus), CSA (cTÜVus), FCC-B, Canadian ICES-003-B, TÜV/S, VCCI-B, EPA Energy Star, RoHS, WEEE, EIZO Eco Products 2009	TCO Displays 5.0, EPEAT Gold, TÜV/Ergonomics (including ISO 13406-2), TÜV/GS, c-Tick, CE, CB, UL (cTÜVus), CSA (cTÜVus), FCC-B, Canadian ICES-003-B, TÜV/S, VCCI-B, EPA Energy Star, RoHS, WEEE, EIZO Eco Products 2009	
Supplied Accessories	AC power cord, signal cables (DVI-D – DVI-D, D-Sub – D-Sub), audio cable, EIZO LCD Utility Disk (PDF user's manual, ScreenManager Pro for LCD [DDC/CI], EIZO Screen-Slicer software), setup guide, spec sheet, 4 screws for mount option, warranty card			
Warranty	Five Years ²			

¹ The bundled ScreenManager Pro for LCD is necessary to activate Auto Fine Contrast. The USB version of ScreenManager Pro for LCD is compatible with Microsoft Windows Vista/XP/2000. The DDC/CI version is compatible with Vista. ² The usage time is limited to 30,000 hours or less, and the warranty period of the LCD panel is limited to three years from the date of purchase. With current LCD technology, a panel may contain a limited number of missing or flickering pixels.

These monitors were developed, manufactured, and quality control tested by EIZO in Japan.

All product names are trademarks or registered trademarks of their respective companies. EcoView NET is a trademark, EIZO and FlexScan are registered trademarks of Eizo Nanao Corporation. Specifications are subject to change without notice. Copyright© 2009 Eizo Nanao Corporation.



www.eizo.com

EIZO NANA O CORPORATION 153 Shimokashiwano, Hakusan, Ishikawa 924-8566 Japan Phone +81-76-277-6792 Fax: +81-76-277-6793