



ALL-IN-ONE

www.ares.com

AURES
TOUCH THE DIFFERENCE



MOBILITY



MODULAR



PANELS PC



PRINTERS



DISPLAYS



ACCESSORIES

YUNO

universal multi-configuration integrated system

Robust, yet compact and stylish POS system

YUNO is a robust but stylish and compact product, designed by AURES to suit the many applications of the POS vertical sectors.

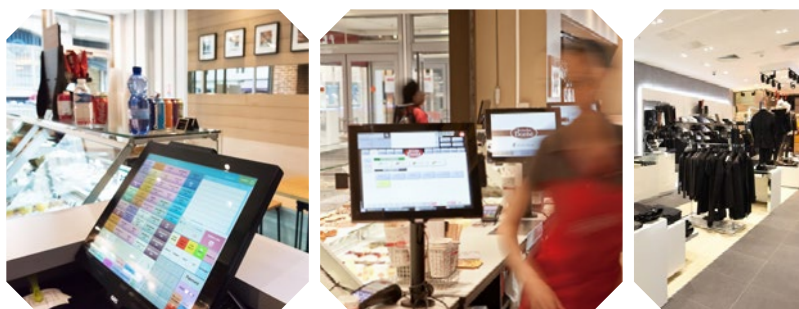
It is a fanless, flexible and high-performance hardware, fitted either with a **Broadwell i3 5010U** or a **Quad-Core Bay Trail 1900** platform; the system is available in 2 formats (traditional 4:3 15.1" screen and Wide 16:9 15.6" screen) and equipped with a shock- and scratch-proof, multi-touch, projected, capacitive screen (PCAP technology).

Very flexible, **YUNO** is offered with VESA fixings options (for wall or pole mounted solutions), as well as in a simple touchscreen version (15.1" and Wide 15.5" monitors).

The standard version features a 64 GB flash disk (2.5" SSD) and stands up to dirt in the toughest settings (fat, crumbs, dust, splashes and leftovers in kitchens, restaurants and bakeries). It integrates energy efficient processors (Broadwell i3 or Bay Trail J1900) and a heat-dissipating aluminium structure, ensuring compliance with environmental standards (low carbon footprint).



YUNO is an accessible product whose many features (technology, ergonomics, flexibility and design) make it good value for money. It constitutes a sensible, cost-effective and long-term investment for any POS IT equipment.



TOUCH THE DIFFERENCE

YUNO



Compact, heavy duty but stylish EPOS terminal
 Broadwell i3 5010U or Quad-core Bay Trail J1900 processor
 2.5" 64 GB SSD (2 slots)
 Projected, capacitive, multi-touch screen (PCAP)
 4:3 or Wide formats (15.1" or 15.6" for Yuno Wide)
 4 GB memory as standard (upgradable to 8 GB)
 Tilting angle 0-90°
 Discreet yet easily accessible connectivity
 Mini DP output for 2nd screen
 Energy efficient processors for low carbon footprint
 Available with VESA bracket option(s), for wall and pole mounted installations
 Available in a simple touchscreen(s) option - monitor(s)



MODEL	YUNO
Processor	Broadwell i3 5010U or BayTrail J1900 Quad-Core
RAM	DDR3 SODIMM 4 GB as standard (up to 8 GB)
SSD	2.5" 64 GB
LCD	15" TFT (1024 x 768) or 15.6" (1366 x 768) (YUNO WIDE), LED back-lighting
Touchscreen	Flat, zero bezel multi-touch screen - with projected, capacitive panel (PCAP)
Brightness	15" - 250 cd/m ² ; 15.6" - 200 cd/m ²

INPUT-OUTPUT PORTS	
Serial	4 serial ports (+ 5/12 V power supply for COM3 / COM4)
USB	5 USB 2.0 ports + 1 USB 3.0 port (for the J1900 version) 4 USB 2.0 + 2 USB 3.0 (for the i3 version)
LAN	10/100/1000Base-T
2nd Screen	Port with support for HDMI, DVI and VGA (mini Display Port)
Cash Drawer	24/12 V DC
Audio	Internal loudspeaker, headphones, micro jack plug
Power Supply	+ external 19 V DC
Mini-PCI Express	1 Mini PCI Express slot (WIFI)

MISCELLANEOUS	
EMI	CE/FCC Class A
Safety	LVD, external adaptor UL c/us, CE, TUV, etc.
Operating Temperature	0 ~ 40 °C
Front	Dust- and splash-proof
Colours	Black or White
Materials	Polycarbonate (cover) + aluminium (structure)
Dimensions (W x D x H)	360.1 x 171.5 x 316.1 mm (15.1" format) 402.2 x 171.5 x 295.3 mm (15.6" Wide format)
Weight	10-11 kg depending on the option (15.1" format) 11-12 kg (15.6" Wide format)
Compatible OS	Windows 10 Enterprise, Windows 8 Industry, Windows 7 Pro, POS Ready 7, Linux, Android

OPTIONAL EXTRAS	
Multi-Technology reader	for combined reading of MSR and RFID (high and low frequencies), Bluetooth (BLE), NFC...
Addimat and/or Dallas readers	1 slot, at right of EPOS terminal
Fingerprint reader	Yes
Barcode reader	1D and 2D
Customer display	20 characters x 2 lines (VFD)
2 nd screen	10.1" - 16:9 1024 x 600 Flat LED screen (EPOS digital signage)
WIFI	Internal, 802.11 b/g/n
VESA fixings option(s)	For wall or pole-mounted applications (no base nor stand)
Simple screen option(s)	This EPOS terminal is available in a monitor version (15.1" and 15.6" touchscreens)



Specifications are subject to change without notice - © AURES 2016