

Wyse V class thin clients

Versatility on your desktop



Wyse V class thin clients.

All you need to know. Here.



Introducing the Wyse V class thin clients

The Wyse V class family of thin clients present a compelling offer of versatility and performance.

Powerful energy saving CPUs are at the heart of Wyse V class' expandable but compact size that features a host of connections including DVI for crisp displays and a unique monorail mounting system allowing the device to be mounted under desks, to walls and even to the rear of desktop monitors.



Wyse V10L Dual DVI Featuring fast boot-up times and dual DVI monitor support



Wyse V10L Dual-DVI
Featuring Wyse ThinOS for fast boot up times and dual DVI monitor support



Wyse V10LE
Wyse ThinOS for fast boot up times with a fast 1.2 Ghz processor



Wyse V30LE
Featuring Microsoft Windows CE and a fast 1.2 Ghz processor



Wyse V50LE
Featuring Wyse Linux v6 and a fast 1.2 Ghz processor



Wyse V90LE
Featuring Microsoft Windows XP embedded and a fast 1.2 Ghz processor



Wyse V90LEW
Featuring Microsoft Windows Embedded Standard and a fast 1.2 Ghz processor



Wyse V00LE
Zero client for use with Wyse WSM and features a fast 1.2 Ghz processor



Start

Models

Features

Technical

Print

WYSE
I I I I

Features Wyse V class thin clients

The Wyse V class family of versatile thin clients has been created to combine expandability, power and performance in a compact space-saving desktop device. The family is complemented by the Wyse thin computing software range that features a fast operating system, provisioning, management and virtualization applications designed to deliver the best PC experience in a thin computing environment.

The Wyse V class is available with Wyse ThinOS, Wyse Linux v6, Microsoft Windows CE, XP Embedded and Embedded Standard operating systems and a model for use with Wyse WSM.

Learn more: Simply click the Wyse V class feature icons below:

Performance



L Dual DVI Connectivity



LE Family Connectivity



Mounting Options



Green



Provisioning Software



Management Software



Virtualization Software



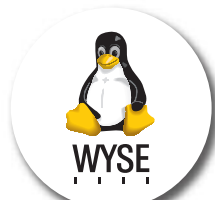
Virtualization Software



Wyse ThinOS



Wyse Linux v6



Microsoft Windows CE



Microsoft Windows XP Embedded



Microsoft Windows Embedded Standard



Visit: wyse.com



Take a tour of the Wyse V class range features here



Start

Models

Features

Technical

Print

WYSE
| | | |

Performance

Expandability. Power. Performance.

Reflecting the needs of ever changing desktop environments the Wyse V class range has the expandability, power and performance to match.

Driven by powerful energy saving Via C7 Eden processors the Wyse V class range of thin clients present an all-round high performance and versatile desktop computing platform. Adding an extra monitor is simple with built-in dual video. Expanding functionality is straightforward with an optional PC-Card expansion slot. Four operating systems are available - as well as zero client versions that enable you to 'provision' your users with their individual choice of operating system and applications.

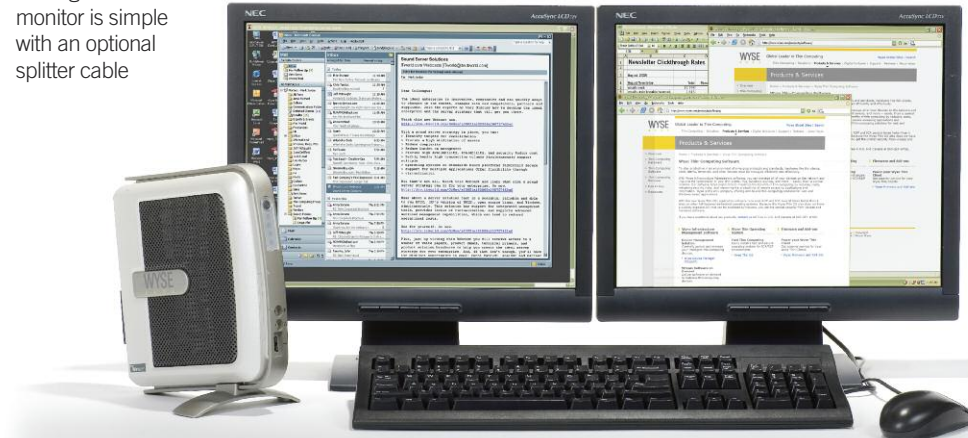
Choose the WiFi wireless options to deploy the Wyse V class across range of desktop environments without compromising data security.



Via C7 Eden 800MHz and 1.2 GHz

The Via C7 Eden processors inside every Wyse V class (800MHz inside the L Family and 1.2 GHz inside the LE Family) deliver excellent performance with low energy use.

Adding a second monitor is simple with an optional splitter cable



And, just like all Wyse thin clients, they don't have hard drives, so all your users' data remains safely on the server, eliminating the risks from data loss or malicious viruses.

Continue tour



Start

Models

Features

Technical

Print

WYSE
I I I I

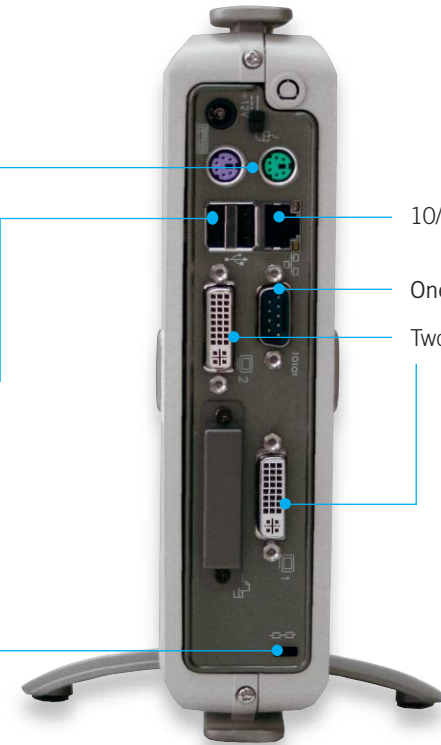
V class L-Family Connectivity

Wyse V10L Dual DVI thin clients



Well connected

- Two PS/2 ports
- Audio In: 1/8-inch mini jack, 8 bit stereo microphone
- Audio Out: 1/8-inch mini jack, 16 bit stereo
- Three external USB 2.0 ports (1 front; 2 back)
- Kensington Lock Slot
- Options:
 - Internal smart card reader
 - Antenna connection for internal wireless



Continue tour



Start

Models

Features

Technical

Print

WYSE
| | | |

V class LE-Family Connectivity

Wyse V10LE, V30LE, V50LE, V90LE, V90LEW & V00LE



Well connected

Two PS/2 ports

Audio In: 1/8-inch mini jack,
8 bit stereo microphone

Audio Out: 1/8-inch mini jack,
16 bit stereo

Three external USB 2.0 ports
(1 front; 2 back)

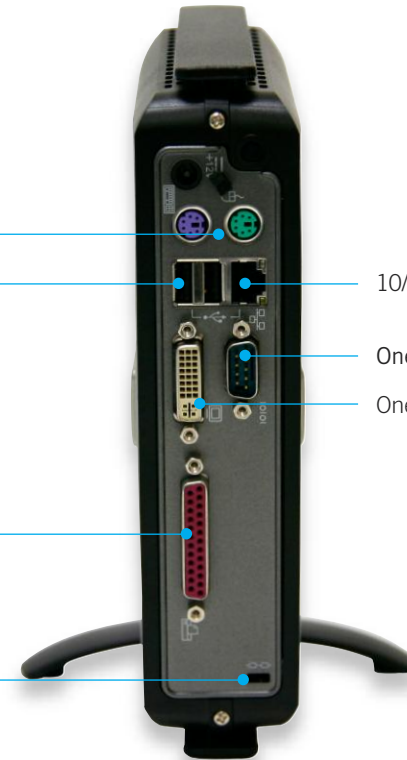
One parallel port

Kensington Lock Slot

Options:

Internal smart card reader

Antenna connection for internal wireless



10/100 Base-T Ethernet port

One serial port

One DVI-I port

Continue tour



Start

Models

Features

Technical

Print

WYSE
| | | |

Mounting options

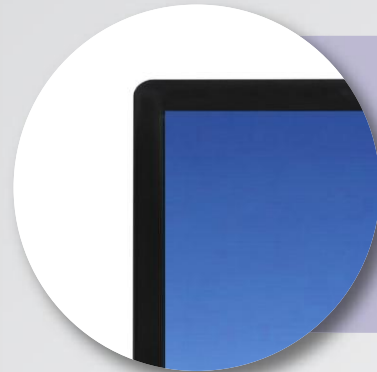


Vertical

- Wyse V class thin clients are supplied as standard with feet for vertical use.

Horizontal

- Optional feet enable Wyse V class thin clients to be used horizontally.



Back of monitor or wall mounting

- An optional VESA mount bracket enables the Wyse V L and LE Family of thin clients to be mounted on the back of a monitor (this requires the four industry standard mounting points to be free). The same bracket can be used for wall mounting, or in a secure or ruggedized cabinet if required.

Continue tour



Start

Models

Features

Technical

Print

WYSE
| | | |

Desktop computing Without compromise



That's Wyse
EarthSmart
Computing



EarthSmart Computing™



Going Green with Wyse thin computing

Through our EarthSmart Computing initiative we are committed to helping organizations implement a greener computing strategy - one that delivers a more efficient and productive computing experience for your users with a positive effect on energy wastage, heat and carbon emissions.

Green Power

Wyse V class thin clients draw as little as 13 to 15 watts of power*, create very little heat and - as a result - contribute to cooler user working environments, greatly reduced carbon footprints and huge savings in energy costs, when compared to equivalent PC desktops.

*Average power usage with 1 device connected to 1 keyboard, 1 PS/2 mouse, and 1 monitor.

Continue tour



Start

Models

Features

Technical

Print

WYSE
| | | |

Provisioning Software Wyse WSM

Wyse WSM Delivers full PC functionality with all the benefits of centralized management and maintenance-free 'Zero Clients'.

Wyse WSM provisions the operating system and applications on-demand to desktop devices across your network. Even traditional management tasks such as firmware upgrades, patching or installing new software applications are carried out one-time only centrally on the server, avoiding the need to visit individual desktops. Dramatically speeding-up and simplifying deployment in one stroke.

The power of a PC, without the complexity.

Wyse Zero Clients and Wyse WSM provide compact, energy efficient and productive desktops with all the dynamic user experience of a PC without the day-to-day complexities and risks associated with one.

Plus, as all Wyse Zero Clients have no moving parts to fail, their service lives (typically 5-10 years) are extended beyond those of comparable PCs, and the noise from fans and hard drives is eliminated. Better still, their low power consumption means low heat output enabling comfortable working environments with a reduced dependence on costly carbon-heavy air conditioning - often leaving workplace cooling achievable through natural ventilation.



Continue tour



Start

Models

Features

Technical

Print

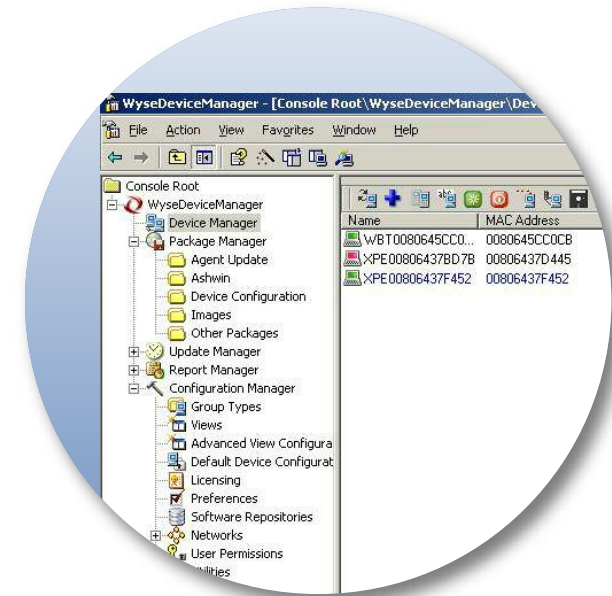
WYSE
I T I

Management Software Wyse Device Manager

Thin computing remote management. Made easy.

Wyse Device Manager (WDM) provides comprehensive, enterprise-wide management for Wyse thin clients. A licence for WDM Workgroup Edition is included and may be upgraded to WDM Enterprise Edition for an additional charge. **Key features include:**

Security	<ul style="list-style-type: none">• HTTPS Based Imaging / Updates• Fully Encrypted Network Traffic• Multi-user Admin Access (MS AD) Support
No-Hassle Deployment	<ul style="list-style-type: none">• Complete Device Imaging / Patching / Updates• Bandwidth Throttling for Efficiency / Reliability• Software Updates and Add-ons
Device Administration and Monitoring	<ul style="list-style-type: none">• Device Health Status / Reporting• Remote Shadowing / Control• Default Device Configuration
Scalability	<ul style="list-style-type: none">• Distributed Architecture• SQL / MSDE Support• Multiple Remote Repository Support
Complete Asset Visibility	<ul style="list-style-type: none">• Automated Discovery• Detailed Hardware Asset information• Installed Software Asset information



Continue tour



Start

Models

Features

Technical

Print

WYSE
| | | |

Virtualization Software Wyse TCX™ Suite with Collaborative Processing Architecture™

Wyse TCX delivers an amazing user experience in one software suite.

Wyse TCX is our new software suite which enriches the user experience by removing the limitations previously associated with thin clients. It enhances, not replaces, key protocols like ICA/HDX and RDP adding key features to make each more valuable. With Wyse TCX users receive the best PC experience available on a thin computing platform.^{1,2}



Wyse TCX Multi-display

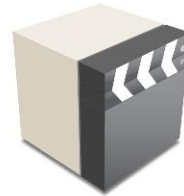
Ensures application windows and dialog boxes are multi-monitor aware when using more than one monitor.



Wyse TCX USB Virtualizer

Enables plug and play peripheral support for virtual desktop environments.

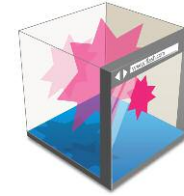
- Redirect and use local USB devices in virtual desktops.
- Deploy virtual desktops to knowledge workers with special device access needs.
- Enable a broad set of USB peripherals including webcams and headsets.



Wyse TCX Multimedia

Streamlines the delivery of the multimedia stream to the local client for a rich user experience within a thin computing architecture.

- Accelerates Mpeg1, Mpeg2, WMV, Mpeg4 Part 2, AC3, AAC, MP3, WAV, WMA media types.
- Collaborative Processing Architecture enhances server scalability, and network utilization by off-loading multimedia rendering to the client.



Wyse TCX Flash Acceleration

Wyse TCX Flash Acceleration helps thin client users to experience improved Flash video performance. While the Flash player continues to run server-side, the resulting images are transcoded and redirected to the client for fast rendering. The technology allows for greater control of frame rate and compression and supports enhanced playback of youtube style flash videos in Internet Explorer.



Wyse TCX Rich Sound

Enables bi-directional audio in virtual desktop environments, enabling solutions such as VOIP, digital dictation or voice recognition to be deployed.

[Continue tour](#)



¹ Subject to licence fee.
² Support is dependant on host Operating System.



Start

Models

Features

Technical

Print

WYSE
I I I I

Virtualization Software Wyse Virtual Desktop Accelerator

Removing the barriers of network latency

Wyse Virtual Desktop Accelerator (VDA) enables virtualized desktop and thin computing environments to be deployed to areas where network latency has, to date, presented operational barriers. Now, with Wyse VDA, more users can receive the full benefits of Wyse thin computing – with the best PC experience over virtualized desktops.

Wyse VDA is a software-only solution for Wyse thin clients and supported PCs that delivers the best user experience for the allocated network bandwidth by neutralizing the effects of network latency and packet loss. Making 'thin' suitable for more remote-site, branch, or field-based users.

Wyse VDA works with instead of replacing existing RDP and ICA protocols, accelerating them by up to 20 times on networks faced with latencies up to and beyond 300ms, and at least 768kbps bandwidth.



At a glance features:

- Software-only acceleration of virtual desktops and applications
- Accelerates existing Citrix ICA and Microsoft RDP protocols
- Works on WANs and 'fat, long pipes'
- Accelerates connections to Citrix XenApp, Citrix XenDesktop, VMware View and Microsoft Terminal Server and Microsoft Hyper-V VDI
- Enhances Wyse TCX software suite functionality across wide-area networks
- Enables Wyse Collaborative Processing Architecture across wide-area networks
- Administrator console provides control of maximum bandwidth per connection
- Leverages built-in security of underlying protocols (128-bit encryption for RDP and ICA).

Continue tour



Start

Models

Features

Technical

Print

WYSE
I I I I

Operating Systems Wyse ThinOS

Wyse ThinOS is the most optimized, management-free solution for Citrix XenApp, Citrix XenDesktop, Microsoft Terminal Server and VMware View virtual desktop environments.

Wyse ThinOS ensures every Wyse thin client provides flexible and secure user access as it's the only thin computing operating system to feature an unpublished API delivering built-in protection from the viruses, malicious software and trojans developed by hackers.

This fast, purpose-built thin computing operating system boots-up in seconds, updates itself automatically, and delivers IT managers with simple, scalable administration to suit their organization's needs.

Wyse ThinOS makes time consuming maintenance tasks such as software and firmware updates as easy as dragging and dropping them onto a central file server (ftp, http and https).

Image management and configuration can be automated via DHCP and fileserver for a 'hands-off' approach, while Wyse Device Manager provides complete 'hands-on' management of enterprise-wide devices.

Wyse ThinOS delivers a wealth of innovative, user-oriented and productive features:

Easy management

- Wyse ThinOS enables simple, scalable device management from day one.
- Its easy FTP-based configuration and automatic update facility allows for time-saving hands-off device management.
- In fact it's so easy, many IT managers find they don't need dedicated management tool. For those that do - they'll benefit from Wyse ThinOS' complete integration with Wyse Device Manager.

Fast boot-up

- Wyse ThinOS users and managers alike benefit from the class-leading fast boot-up times.

Security

- Featuring an unpublished API and no file system, Wyse ThinOS is inherently secure providing maximum security from malware and viruses.

Smart card support

- Wyse ThinOS gives organizations the levels of secure access they need with seamless smart-card roaming between devices.

Full support for Wyse Virtual Desktop Accelerator

- New Wyse Virtual Desktop Accelerator delivers the best user experience for the allocated network bandwidth and neutralizes the effects of network latency and packet loss, making 'thin' suitable for more remote-site, branch, or field-based users.
- Accelerates RDP and ICA up to 20 times on networks with latencies up to and exceeding 300ms and at least 768kbps bandwidth.

Continue tour



Start

Models

Features

Technical

Print

WYSE
I I I I

Operating Systems Wyse Linux v6

Wyse Linux v6 is a powerful Linux-based operating system optimized for thin computing. It is ideal for organizations who want to run server-based Microsoft Windows applications, local Linux applications or distributed X Window applications.



Wyse Linux v6 comes with the Firefox web browser to give you a secure internet experience. Plus it offers terminal emulation to give you the ability to run legacy applications.

Secure, flexible access

Wyse Linux's hot-desking capabilities allow people to log in to different thin clients without losing their desktop configuration. Wyse Linux is modular too, allowing you to add-on or remove features

as necessary to improve your performance and cost advantages. It also offers a secure read-only file system that provides the highest protection against software corruption and virus attacks. In addition the file system is compressed to maximize space for additional software applications.

Wyse Linux is a powerful Linux-based operating system optimized for Wyse thin computing.

Improved wireless and smart card authentication and support

New with Wyse Linux v6 is improved wireless support (including 802.11 g/b) and authentication, better smart card support and authentication and enhanced localization with doublebyte Asian language support.

Continue tour



Start

Models

Features

Technical

Print

WYSE
L I N U X

Operating Systems Microsoft Windows CE

Wyse-enhanced Microsoft Windows CE is ideal for departments and organizations that want a Microsoft end-to-end solution, and support for Citrix ICA, Microsoft RDP and VMware View as well as a local browser and terminal emulation, plus standard connections to peripherals and add-ons.

Microsoft Windows CE gives you a PC-like experience on the desktop, with local terminal emulation so you can run most legacy applications.

By combining this small and fast operating system with firmware components, Wyse is able to reduce boot times and increase protection against viruses, trojan horses, and other malware.

The result is a simply more secure solution that provides the flexibility to add standard peripherals, from printers to scanners to USB thumb drives. However these peripherals can only be connected under access controlled by the IT administrator.



Continue tour



Start

Models

Features

Technical

Print

WYSE
I I I I

Operating Systems Microsoft Windows XP Embedded

Running Microsoft Windows XP Embedded on Wyse thin clients gives IT departments the ability to support Citrix ICA, Microsoft RDP and VMware View environments and deploy fully functional desktops with better manageability and significantly lower total cost of ownership than personal computers.

Wyse Enhanced Microsoft Windows XP Embedded-based thin clients can run 32 bit Microsoft Windows applications, either locally or from servers located on the network, with inbuilt flexibility to add and support a host of desktop peripherals with permission from the IT administrator.



Secure write-protected thin desktops

This robust and flexible operating system is further enhanced by the Wyse file-based Write Filter that enables you to protect the file system image from accidental changes or user customization.

On rebooting, the thin client simply returns to the required file system image state.

Wyse customized image support

Wyse technicians are able to help you customize Windows XP Embedded to your exact requirements and create bespoke system images for subsequent enterprise-wide deployment, management and update through Wyse Device Manager.

Contact your Wyse Partner for further details.

Continue tour



Start

Models

Features

Technical

Print

WYSE
| | | |

Operating Systems Microsoft Windows Embedded Standard

Running Windows Embedded Standard (WES), the latest and most advanced embedded OS from Microsoft, on Wyse thin clients gives IT departments the ability to deploy fully functional desktop clients with better manageability and significantly lower total cost of ownership than personal computers.

Wyse WES-based thin clients can run 32 bit Microsoft Windows applications, either locally or from servers, with the inbuilt flexibility to add and support a host of desktop peripherals with permission from the IT administrator.



Full support is provided for RDP 7.0, Citrix ICA 11.2, VMware View 4.0.1 and Internet Explorer 8.

Secure write-protected thin desktops

This robust and flexible operating system is further enhanced by the Wyse file-based Write Filter that enables you to protect the files, folder and/or entire volumes from accidental changes or user customization. On rebooting, the thin client simply returns to its original state thus preventing any possible damaging modification either from users or malware.

Wyse customized image support

Wyse technicians are prepared to help you customize Windows Embedded Standard to your exact requirements in order to create custom-built images for subsequent enterprise-wide deployment, management and update through Wyse Device Manager.

Contact your Wyse Partner for further details.

Take the Tour again



Start

Models

Features

Technical

Print

WYSE
I I I I

Contact Wyse

Wyse Technology Inc.

3471 North First Street, San Jose, CA 95134-1801

Visit our website at:

<http://www.wyse.com> or send an email to: sales@wyse.com

Wyse Sales

800 GET WYSE (800 438 9973) + 1 408-473-1200

Wyse Customer Service Center:

800 800 WYSE (800 800 9973)

**Wyse offers thin computing sales, service
and support expertise around the globe.**

[Click here for contact details of your regional Wyse office.](#)

©2010 The Wyse logo and Wyse are trademarks of Wyse Technology Inc. Other product names mentioned herein are for identification purposes only and may be trademarks and/or registered trademarks of their respective companies. All specifications are subject to change without notice. Whilst we make every effort to ensure the accuracy of the details, specifications, models, images and benefits featured in this datasheet, we cannot be held responsible for any errors and/or omissions. If you have any queries regarding Wyse products please contact your authorized regional Wyse Partner or representative for further information and assistance. Some features require support by server operating system and protocol. Approved final 260410.



Start

Models

Features

Technical

Print

WYSE
I I I I

Technical Wyse V class Specifications

Wyse V10L Dual DVI thin client

Wyse V class L-Family Hardware Specifications Wyse V10L Dual DVI thin client	
Processor	Intel Celeron D400
Memory	512MB DDR2 (expandable to 1GB)
Hard Drive	40GB SATA (expandable to 160GB)
Network	10/100 Ethernet
Video	Dual DVI (19" and 20" monitors supported)
Power	15W

Wyse V10LE, V30LE, V50LE, V90LE, V90LEW thin clients & V00LE Zero Client

Wyse V class LE-Family Hardware Specifications Wyse V10LE, V30LE, V50LE, V90LE, V90LEW and V00LE	
Processor	Intel Celeron D400
Memory	512MB DDR2 (expandable to 1GB)
Hard Drive	40GB SATA (expandable to 160GB)
Network	10/100 Ethernet
Video	1x DVI (19" and 20" monitors supported)
Power	15W

Wyse ThinOS

Wyse ThinOS Software specifications	
Operating System	ThinOS 4.0
File System	NTFS, FAT32
Network	10/100 Ethernet

Wyse Linux v6

Wyse Linux v6 Software specifications	
Operating System	Linux 2.6.18
File System	NTFS, FAT32
Network	10/100 Ethernet

Microsoft Windows CE 6.0 WFR3

Microsoft Windows CE 6.0 WFR3 Software specifications	
Operating System	Windows CE 6.0 WFR3
File System	NTFS, FAT32
Network	10/100 Ethernet

Microsoft Windows XP Embedded

Microsoft Windows XP Embedded SP3 Software specifications	
Operating System	Windows XP Embedded SP3
File System	NTFS, FAT32
Network	10/100 Ethernet

Microsoft Windows Embedded Standard

Microsoft Windows Embedded Standard Software specifications	
Operating System	Windows Embedded Standard
File System	NTFS, FAT32
Network	10/100 Ethernet

Wyse V class thin clients are available across a variety of operating systems featuring the speed, ease and administrative simplicity of Wyse ThinOS, the functionality of Microsoft Windows CE, the versatility of Microsoft Windows XP Embedded, the power of Microsoft Windows Embedded Standard and the robust adaptability of Wyse Linux.

Visit: wyse.com



Start

Models

Features

Technical

Print

WYSE
I I I I

Wyse V class L-Family Hardware Specifications Wyse V10L Dual DVI thin client

Processor	Via C7 Eden 800MHz	Mountings	Vertical foot (optional horizontal feet) Optional VESA mounting bracket
Memory	128MB Flash / 512MB DDR2 RAM	Power	Worldwide auto-sensing 100-240 VAC, 50/60 Hz Average power usage with device connected to 1 keyboard with 1 PS/2 mouse and 1 monitor: 14.1 Watts
I/O peripheral support	Two DVI-I Ports for direct connection to digital displays Enhanced PS/2 keyboard with PS/2 mouse port and Windows keys PS/2 optical mouse included One serial port Three USB 2.0 ports (1 on front, 2 on back)	Temperature range	Horizontal position: 50° to 95° F (10° to 35° C) Vertical position: 50° to 104° F (10° to 40° C)
Factory options	Internal Smart Card reader	Security	Kensington lock slot
Networking	10/100 Base-T Fast Ethernet port (RJ-45)	Regulatory Compliance:	
Display	VESA monitor support with Display Data Control (DDC) for automatic setting of resolution and refresh rate Dual Monitors at 32 bpp color or 24 bpp color up to: 1920x1200@60 Hz	Ergonomics	German EKI-ITB 2000, ISO 9241-3/-8
Audio	Output: 1/8-inch mini jack, full 16 bit stereo, 48KHz sample rate Input: 1/8-inch mini jack, 8 bit microphone	Safety	cULus 60950, TÜV-GS, EN 60950
Physical characteristics	Height: 7.9" (201mm) Width: 1.8" (46mm) Depth: 7.1" (180mm) Shipping weight: 8 lbs. (3.6kg)	RF Interference	FCC class B, CE, VCCI, C-Tick
		Environmental	WEEE, RoHS Compliant
		Warranty	Three-year limited warranty



Start

Models

Features

Technical

Print

WYSE
I I I I

Wyse V class LE-Family Hardware Specifications Wyse V10LE, V30LE, V50LE, V90LE, V90LEW and V00LE

Processor	Via C7 Eden 1.2GHz
Memory	128MB Flash / 512MB DDR2 RAM (Wyse ThinOS) 128MB Flash / 512MB DDR2 RAM (Windows CE and Linux V.6) 1GB Flash / 1GB RAM - up to 2GB Flash / 1GB RAM (Windows XPe) 2GB Flash / 1GB DDR2 RAM (Windows Embedded Standard) OMB Flash / 1GB RAM (Wyse WSM)
I/O peripheral support	One DVI-I Port One DVI-I Port to VGA (DB-15) Adapter Dual-video Support with: Optional DVI-I to DVI-D plus VGA-monitor splitter cable (sold separately) Enhanced PS/2 keyboard with PS/2 mouse port and Windows keys PS/2 optical mouse included - One serial port One parallel port Three USB 2.0 ports (1 on front, 2 on back)
Networking	10/100 Base-T Fast Ethernet twisted pair (RJ-45) Optional external USB 802.11 b/g wireless adapter
Factory options	Internal Smart Card reader Internal wireless option eliminates theft of external wireless adapters CardBus /PCMCIA card slot
Display	VESA monitor support with Display Data Control (DDC) for automatic setting of resolution and refresh rate Single Monitor at 32 bpp color: up to 1920x1200 (Wyse ThinOS), 1920x1440 (Windows CE), 1920x1080 at 23bpp (Linux V.6), 1920x1080 at 32 bpp (Windows XPe) Dual Monitors used simultaneously (requires optional monitor splitter cable) at 32 bpp color: up to 1280x1024 (Wyse ThinOS), 1680x1050 (Windows CE), 1280x1024 @ 24 bpp (Linux V.6), 1920x1080 at 32 bpp (Windows XPe)

Audio	Output: 1/8-inch mini jack full 16 bit stereo, 48KHz sample rate Input: 1/8-inch mini jack, 8 bit microphone
Physical characteristics	Height: 7.9 inches (201mm) Width: 1.8 inches (46mm) Depth: 7.1 inches (180mm) Shipping weight: 8 lbs. (3.6kg)
Mountings	Vertical foot (optional horizontal feet) Optional VESA mounting bracket
Power	Worldwide auto-sensing 100-240 VAC, 50/60 Hz Average power usage with device connected to 1 keyboard with 1 PS/2 mouse and 1 monitor: 13.2 Watts/hour
Temperature Range	Horizontal position: 50° to 95° F (10° to 35° C) Vertical position: 50° to 104° F (10° to 40° C) Humidity 20% to 80% noncondensing
Security	Kensington Lock Slot
Regulatory Compliance:	
Ergonomics	German EKI-ITB 2000, ISO 9241-3/-8
Safety	cULus 60950, TÜV-GS, EN 60950
RF Interference	FCC class B, CE, VCCI, C-Tick
Environmental	WEEE, RoHS Compliant
Warranty	Three-year limited warranty



Start

Models

Features

Technical

Print

WYSE
I I I I

Wyse ThinOS Software specifications

ICA 11.x Compatible Client

- HDX Mediastream
- HDX Realtime
- HDX IntelliCache
- HDX Broadcast (Branch Repeater)
- Broad USB Support (with Wyse TCX)
- Progressive Display
- Desktop Restart (XenDesktop)
- Smartcard authentication and redirection
- Flash Video Support (with TCX)
- Seamless Windows
- Session Reliability
- Access Gateway Support (CSG mode)

RDP 6.x Compatible Client

- Up to 32-bit color depth connections
- Dual Monitor Support (hardware dependant)
- Smartcard authentication and redirection
- Rich Multimedia (with Wyse TCX)
- Broad USB Support (with Wyse TCX)
- Bidirectional Audio (with Wyse TCX)
- Flash Video support (with TCX)
- Disk drive redirection
- WAN Acceleration (with Wyse VDA)

VMware View 4.0 client

- Smartcard Authentication
- Restart VM
- Bi-directional Audio (with TCX)
- SSL Tunneling
- Multimedia Support (with TCX)
- Flash Video Support (with TCX)
- SecureID Authentication
- Broad USB Support (with TCX)
- WAN Acceleration (with VDA)

Roaming smart card vendor support

Enables smart card users to not only roam from station to station but also access the same virtual environment support regardless of which station they are connecting from. Wyse ThinOS provides 'out-of-the-box' smart card support for vendors such as Gemalto .NET, Aladdin, and ActiveIdentity - supported within Citrix, VMware and Microsoft environments. Users benefit from secure login and roaming desktop support so they can access their environments from any suitably equipped Wyse thin computing environment.

Wyse TCX Suite

Advanced support for innovative Wyse TCX virtualization software that both works with *and enhances* ICA and RDP (instead of replacing them) featuring:

- Wyse TCX Multimedia - the power to run rich multimedia files formats utilizing Wyse Collaborative Processing Architecture (CPA) that intelligently redirects the necessary processing tasks between the client and the server.
- Wyse TCX Multi-Display - ensures that windows and dialogue boxes behave the way users expect when using more than one monitor.
- Wyse TCX USB Virtualizer - makes client attached USB devices visible to virtual desktops and applications, with full IT control.
- Wyse TCX Rich Sound - enables virtual desktops and applications to receive and transmit high quality audio without compromise.
- Wyse TCX Flash Acceleration - helps users of thin clients to experience improved Flash performance.

Wyse Virtual Desktop Accelerator

Delivers the best user experience for the allocated network bandwidth. New Wyse Virtual Desktop Accelerator neutralises the effects of network latency and packet loss, making 'thin' more suitable for more remote-site, branch, or field-based users - and boosts RDP and ICA up to 20 times on networks with latencies up to and exceeding 300ms and at least 768kbps bandwidth.

Management made easy Security built in

Fast booting, scalable administration includes simple drag and drop placement of firmware, automatic updates via file server and full integration with Wyse Device Manager. With no published API Wyse ThinOS is inherently secure from viruses and malware. Wyse ThinOS includes robust wired and wireless 802.1x support, with secure encryption for simple installation and management.

Server OS Infrastructure Support

- Citrix XenDesktop
- Citrix XenApp / Citrix Presentation Server
- Microsoft Windows Terminal Server 2003 / 2008
- Support for other leading VDI brokers (Quest Software, Leostream, etc)
- VMware View



Start

Models

Features

Technical

Print

WYSE
I T I

Wyse Linux v6 Software specifications

Firmware features

Wyse-enhanced optimized Linux Kernel 2.6x
Firefox browser standard
X11R6 local window manager
Compressed read-only file system
NFS and Samba file system support
LPR/LPD, Ghostscript and Samba print support for DeskJet and LaserJet
Browser kiosk support with touch screen
Citrix ICA 10.X
RDP 5.1 compatible
X11R6-compliant X-Windows
XDMCP
Terminal emulation with 60 terminal types

Server OS Infrastructure Support

Citrix XenApp / Citrix Presentation Server
Citrix XenDesktop
VMware View
Microsoft Windows Terminal Server 2003 & 2008
UNIX & Linux servers

Set-up and Configuration

User interface
Boot from local flash
User interface languages:
U.S. English, French, German, Spanish

Keyboard language support

U.S. English, French, German, Spanish, U.K. English, 30 other languages included

Protocol Support

PPP, IP, NFS, NTP, DHCP, PXE, SNMP, SSH

Management

Remote management, configuration, and upgrades through Wyse Device Manager
Complete image upgrade
Wake terminal remotely (Wake-on LAN)
Terminal configuration (IP information, name, etc.)
Remote screen shadowing of entire desktop (VNC)
Asset management and Reporting

Wireless support

WPA/802.11, WPA2, IEEE 802.1X
Supports wireless adapters from: Cisco, D-Link, Netgear
Internal WiFi WPA2 supplicant support: WEP40, WEP128, WPA-PSK (TKIP), WPA2-PSK (AES-CCMP), WPA-EAP, WPA2-EAP, MS-CHAP-v2



Start

Models

Features

Technical

Print

WYSE
I I I I

Microsoft Windows CE 6.0 WFR3 Software specifications

Firmware features

Microsoft Windows CE 6.0 WFR3
Microsoft Internet Explorer 6.0 resident:
HTML, JavaScript, XML, Active X as custom
Citrix ICA 10.x resident
Citrix Web Interface
RDP 6.0 resident
VMware View Client Resident
CCID compliant Smart Card Readers support
Ericom PowerTerm® Terminal Emulation
provides 30-plus terminal emulation
Jetcet 5.0
Media Player 9.0
Terminal Services Advanced Client (TSAC)
ThinPrint ICAVC and Thinprint RDP
VNC support in CE 6.0
WinCE 6 eStar B category certification

Server OS Infrastructure Support

Citrix XenApp / Citrix Presentation Server
Citrix XenDesktop
VMware View
Microsoft Windows Terminal Server 2003 / 2008

Set-up and Configuration

User interface
Boot from local flash

Protocol Support

TCP/IP, DNS, DHCP, PXE, PPP, PC/SC and ISO-7816
smart-card support

Management

Remote management, configuration and upgrades
through Wyse Device Manager
Send messages
Complete image upgrade
Wake terminal remotely (Wake-on LAN)
Terminal configuration (IP information, etc)
Remote screen shadowing of entire desktop
(Wyse Remote Shadow)
Reporting
Altiris Deployment via add-on

Wireless support

802.11 b/g/n support with internal wireless adapter
IEEE 802.1X
WEP, WPA, and WPA-2 wireless authentication
Internal WiFi default encryptions: MD5, PAP, TLS
Supports USB wireless adapters from:
Cisco, D-Link, Netgear, US Robotics, Trendware



Start

Models

Features

Technical

Print

WYSE
I I I I

Microsoft Windows XP Embedded SP3 Software specifications

Firmware features	Microsoft Windows XP Embedded SP3 Microsoft Internet Explorer 7.0 resident: HTML, JavaScript, XML, Active X Sun JRE, Media Player, Citrix Web Interface RDP 6.0.xx resident Citrix ICA 11 resident VMware View Client Resident Ericom PowerTerm [®] Terminal Emulation provides 30-plus terminal emulations Windows Media Player 11, .NET 3.0 SP1
Memory	1GB of flash memory and 1GB of RAM
Server OS Infrastructure Support	Citrix XenApp / Citrix Presentation Server Citrix XenDesktop VMware View Microsoft Windows Terminal Server 2003 & 2008
Set-up and Configuration	Boot from local flash Microsoft Windows XP user interface languages: U.S. English, French, German, Spanish, Optional add-ons
Keyboard language support	U.S. English (standard), French, German, Spanish, U.K. English, 40 other languages included
Protocol Support	TCP/IP, DNS, DHCP, PXE
Management	Remote management, configuration, and upgrades through Wyse Device Manager Complete image upgrade Wake terminal remotely (Wake-on LAN) Terminal configuration (IP information, name, etc.) Remote screen shadowing of entire desktop (Wyse Remote Shadow)

Reporting, Asset management
SMS
Altiris

Wireless support 802.11 b/g/n support with internal wireless adapter
WPA-2, WEP, WPA wireless authentication
Supports wireless adapters from: Cisco, D-Link, Netgear, US Robotics, Trendware

Plug-ins Adobe Flash Player
Adobe Shockwave

Wyse TCX Suite Advanced support for innovative Wyse TCX Suite virtualization software that both works with *and enhances* ICA and RDP (instead of replacing them) featuring:

- Wyse TCX Multimedia - the power to run rich multimedia files formats utilizing Wyse Collaborative Processing Architecture (CPA) that intelligently redirects the necessary processing tasks between the client and the server.
- Wyse TCX Multi-Display - ensures that windows and dialogue boxes behave the way users expect when using more than one monitor.
- Wyse TCX USB Virtualizer - makes client attached USB devices visible to virtual desktops and applications, with full IT control.
- Wyse TCX Rich Sound - enables virtual desktops and applications to receive and transmit high quality audio without compromise.
- Wyse TCX Flash Acceleration - helps users of thin clients to experience improved Flash performance.



Start

Models

Features

Technical

Print

WYSE
I T I

Microsoft Windows Embedded Standard Software specifications

Firmware features

Microsoft Windows Embedded Standard (WES)
Microsoft Internet Explorer 8.0 resident: HTML, JavaScript, XML, Active X
Sun JRE, Media Player, Citrix Web Interface
RDP 7.0 resident
Citrix ICA 11.2 resident
VMware View 4.0.1 client resident
Ericom PowerTerm® Terminal Emulation provides 30-plus terminal emulations
Windows Media Player 11, .NET 3.5

Server OS Infrastructure Support

Citrix XenApp / Citrix Presentation Server
Citrix XenDesktop
VMware View
Microsoft Windows Terminal Server 2003 & 2008

Application Framework

.Net 3.5

Security

File Based Write Filter (FBWF)
Microsoft Baseline Security Analyzer (MBSA)

Set-up and Configuration

Boot from local flash
Microsoft Windows WES user interface languages: U.S. English, French, German, Spanish, Optional add-ons

Keyboard language support

U.S. English (standard), French, German, Spanish, U.K. English, 40 other languages included

Protocol Support

TCP/IP, DNS, DHCP, PXE

Management

Remote management, configuration, and upgrades through Wyse Device Manager
Complete image upgrade
Wake terminal remotely (Wake-on LAN)

Terminal configuration (IP information, name, etc.)

Remote screen shadowing of entire desktop (Wyse Remote Shadow)

Reporting, Asset management

SMS

Altiris

Wireless support

802.11 b/g/n support with external wireless adapter or internal wireless adapter option

WPA-2, WEP, WPA wireless authentication

PEAP-GTC wireless authentication protocol with optional Juniper Odyssey Client

Supports PC-Card wireless adapters from: Cisco, D-Link, Netgear, US Robotics, Trendware

Plug-ins

Adobe Flash Player

Adobe Shockwave

Microsoft Silverlight

Wyse TCX Suite

Advanced support for innovative Wyse TCX Suite virtualization software that both works with *and enhances* ICA and RDP (instead of replacing them) featuring:

- Wyse TCX Multimedia - the power to run rich multimedia files formats utilizing Wyse Collaborative Processing Architecture (CPA) that intelligently redirects the necessary processing tasks between the client and the server.
- Wyse TCX Multi-Display - ensures that windows and dialogue boxes behave the way users expect when using more than one monitor.
- Wyse TCX USB Virtualizer - makes client attached USB devices visible to virtual desktops and applications, with full IT control.
- Wyse TCX Rich Sound - enables virtual desktops and applications to receive and transmit high quality audio without compromise.
- Wyse TCX Flash Acceleration - helps users of thin clients to experience improved Flash performance.



Start

Models

Features

Technical

Print

WYSE
I I I I



Wyse V class

Wyse V class thin clients

Versatility on your desktop

Summary data

Wyse V class thin clients

Versatility and performance

Reflecting the needs of ever changing desktop environments the Wyse V class range has the expandability, power and performance to match. The family features variants across five operating systems, a Wyse WSM zero client and a dual DVI configuration running Wyse ThinOS.

Driven by powerful energy saving Via C7 Eden processors the Wyse V class range of thin clients present an all-round high performance and versatile desktop computing platform. Adding an extra monitor is simple with built-in dual video support. Expanding functionality is straightforward with an optional PC-Card expansion slot. Five operating systems are available – as well as zero client versions that enable you to ‘provision’ your users with their individual choice of operating system and applications.

Secure desktop computing

Choose the WiFi wireless options to deploy the Wyse V class across range of desktop environments without compromising data security. And, just like all Wyse thin clients, they don't have hard drives, so all your users' data remains safely on the server, eliminating the risks from data loss or malicious viruses. A unique monorail mounting system allows the Wyse V class to be mounted discretely under desks, to walls and even to the rear of desktop monitors.

Provisioning and Virtualisation software

The Wyse V class is well suited to take advantage of Wyse WSM provisioning software and the Wyse TCX Suite of virtualization software.

Choice of operating systems

The Wyse V class is available with Wyse ThinOS, Microsoft Windows CE 6.0 WFR3, XP Embedded and Embedded Standard and Wyse Linux v6 operating systems as well as Wyse WSM configured zero client format.

Call Wyse: 1-800-GET-WYSE www.wyse.com

Features

Performance

Via C7 Eden processors feature inside every Wyse V class (800Mhz inside the V10L Dual DVI and 1.2 GHz inside the LE Family) delivering excellent performance with low energy use.

Connectivity

The Wyse V class supports fixed and wireless networking, serial, video, sound and smart card connectivity.

Mounting options

Supplied with a vertical foot as standard and optional horizontal standing feet. Can also be mounted to walls, under desks and to the rear of monitors.

Green

Draws just between 13 to 15 watts of power when connected to one keyboard, PS/2 mouse and monitor.

OS and Application Provisioning

Full integration with Wyse WSM provisioning software with the V00LE.

Management

Features Wyse Device Manager (workgroup edition).

Virtualization

Delivers the best user experience through full support for the Wyse TCX Suite of virtualized desktop enhancement software and Wyse VDA - acceleration software that reduces the effects of network latency.

Wyse ThinOS

Fast booting, easy management, secure and with Smart Card support.

Wyse Linux V6

Powerful Linux-based operating system optimized for thin computing.

Microsoft Windows CE 6.0 WFR3

Ideal for departments and organizations that need simple support for Citrix ICA and Microsoft RDP.

Microsoft Windows XP Embedded

Deploy fully functional desktop computers, with better manageability with the ability to create bespoke system images.

Microsoft Windows Embedded Standard

Take advantage of the power of Microsoft Windows Embedded Standard.

Wyse V10L Dual DVI thin client Hardware specifications

Processor	Via C7 Eden 800MHz
Memory	128MB Flash / 512MB DDR2 RAM
I/O peripheral support	Two DVI-I Ports for direct connection to digital displays Enhanced PS/2 keyboard with PS/2 mouse port and Windows keys PS/2 optical mouse included One serial port Three USB 2.0 ports (1 on front, 2 on back)
Factory options	Internal Smart Card reader
Networking	10/100 Base-T Fast Ethernet port (RJ-45)
Display	VESA monitor support with Display Data Control (DDC) for automatic setting of resolution and refresh rate Dual Monitors at 32 bpp color or 24 bpp color up to: 1920x1200@60 Hz
Audio	Output: 1/8-inch mini jack, full 16 bit stereo, 48KHz sample rate Input: 1/8-inch mini jack, 8 bit microphone
Physical characteristics	Height: 7.9" (201mm) Width: 1.8" (46mm) Depth: 7.1" (180mm) Shipping weight: 8 lbs. (3.6kg)
Mountings	Vertical foot (optional horizontal feet) Optional VESA mounting bracket
Power	Worldwide auto-sensing 100-240 VAC, 50/60 Hz Average power usage with device connected to 1 keyboard with 1 PS/2 mouse and 1 monitor: 14.1 Watts
Temperature range	Horizontal position: 50° to 95° F (10° to 35° C) Vertical position: 50° to 104° F (10° to 40° C)
Security	Kensington lock slot
Regulatory Compliance:	Ergonomics German EKI-ITB 2000, ISO 9241-3/-8 Safety cULus 60950, TÜV-GS, EN 60950 RF Interference FCC class B, CE, VCCI, C-Tick Environmental WEEE, RoHS Compliant
Warranty	Three-year limited warranty

Wyse Technology Inc.
3471 North First Street
San Jose, CA 95134-1801

Visit our website at:
<http://www.wyse.com>
Or send email to:
sales@wyse.com

Wyse Sales
800 GET WYSE
(800 438 9973)
+ 1 408-473-1200

Wyse Customer Service Center:
800 800 WYSE
(800 800 9973)

WYSE
| | | |

Wyse V class LE family thin clients Hardware specifications

Wyse V10LE, V30LE, V50LE, V90LE, V90LEW and V00LE thin clients

Processor	Via C7 Eden 1.2GHz
Memory	128MB Flash / 512MB DDR2 RAM (Wyse ThinOS) 128MB Flash / 512MB DDR2 RAM (Windows CE and Linux V.6) 1GB Flash / 1GB RAM - up to 2GB Flash / 1GB RAM (Windows XPe) 2GB Flash / 1GB DDR2 RAM (Windows Embedded Standard) 0MB Flash / 1GB RAM (Wyse WSM)
I/O peripheral support	One DVI-I Port One DVI-I Port to VGA (DB-15) Adapter Dual-video Support with: Optional DVI-I to DVI-D plus VGA-monitor splitter cable (sold separately) Enhanced PS/2 keyboard with PS/2 mouse port and Windows keys PS/2 optical mouse included One serial port, and one parallel port Three USB 2.0 ports (1 on front, 2 on back)
Factory options	Optional CardBus /PCMCIA card slot Internal Smart Card reader Internal wireless option eliminates theft of external wireless adapters
Networking	10/100 Base-T Fast Ethernet twisted pair (RJ-45) Optional external USB 802.11 b/g wireless adapter
Display	VESA monitor support with Display Data Control (DDC) for automatic setting of resolution and refresh rate Single Monitor at 32 bpp color: up to 1920x1200 (Wyse ThinOS), 1920x1440 (Windows CE), 1920x1080 at 23bpp (Linux V.6), 1920x1080 at 32 bpp (Windows XPe) Dual Monitors used simultaneously (requires optional monitor splitter cable) at 32 bpp color: up to 1280x1024 (Wyse ThinOS) 1680x1050 (Windows CE), 1280x1024 @ 24 bpp (Linux V.6), 1920x1080 at 32 bpp (Windows XPe)
Audio	Output: 1/8-inch mini jack full 16 bit stereo, 48KHz sample rate Input: 1/8-inch mini jack, 8 bit microphone
Physical characteristics	Height: 7.9 inches (201mm) Width: 1.8 inches (46mm) Depth: 7.1 inches (180mm) Shipping weight: 8 lbs. (3.6kg)
Mountings	Vertical foot (optional horizontal feet) Optional VESA mounting bracket
Power	Worldwide auto-sensing 100-240 VAC, 50/60 Hz Average power usage with device connected to 1 keyboard with 1 PS/2 mouse and 1 monitor: 13.2 Watts
Temperature Range	Horizontal position: 50° to 95° F (10° to 35° C) Vertical position: 50° to 104° F (10° to 40° C) Humidity 20% to 80% noncondensing
Security	Kensington Lock Slot
Regulatory Compliance:	Ergonomics German EKI-ITB 2000, ISO 9241-3/-8 Safety cULus 60950, TÜV-GS, EN 60950 RF Interference FCC class B, CE, VCCI, C-Tick Environmental WEEE, RoHS Compliant
Warranty	Three-year limited warranty

Wyse Technology Inc.
3471 North First Street
San Jose, CA 95134-1801

Visit our website at:
<http://www.wyse.com>
Or send email to:
sales@wyse.com

Wyse Sales
800 GET WYSE
(800 438 9973)
+ 1 408-473-1200

Wyse Customer Service Center:
800 800 WYSE
(800 800 9973)

WYSE
| | | |