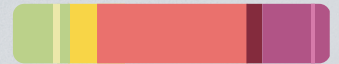




Streamline your office,
maximize productivity



Samsung Colour Laser Multifunction Printer
CLX-6220FX/6250FX



Samsung Colour Laser Multifunction Printer CLX-6220FX/6250FX



Professional performance, multifunction usability

Samsung's focus on high specification and quality colour prints has shaped the development of this multifunctional printer range. When your business demands high performance levels of printing, scanning and copying the Samsung CLX-6220-FX/6250FX range is an ideal option.

The Samsung CLX-6220FX/6250FX range offers consistently outstanding colour prints, copies, scanning as well as minimising operational costs.





Efficient functionality for maximum productivity

With Samsung's CLX-6220FX/6250FX range you get the benefit of high quality colour printing as well as scanning, copying and faxing helping to provide a productive and efficient office environment. With enhanced colour quality and superior specifications the Samsung CLX-6220FX/6250FX range offers your business an effective office solution. Low maintenance, high speed and intelligent resolution features create an economical yet user-friendly multifunction printer.



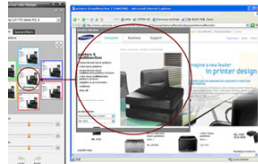
Colour technology suitable for a demanding office environment

Improved colour technology delivers colour adjustments and uniformity for versatile and high quality document output.



Samsung Easy Colour Manager

Easy Colour Manager allows users to easily adjust colour balance, brightness, contrast and saturation of any image that you view on your monitor. It can be especially useful if you have specific colour preferences, or if your company has its own brand requirements.



- You can get an image from anywhere on your screen.
- You can extend or reduce the size of preview window.
- You can adjust colour tone of the image that you grabbed.
- You can save your toner or paper by selecting the precise area to print.



Samsung's Real-Time Calibration Technology

Samsung's Real-Time Calibration Technology ensures documents are printed to a consistently high colour quality. However, when dealing with important documents that require special attention, users can choose to manually define the colour quality that will appear on their documents. The enhanced CTD (Colour Toner Density) sensor ensures colour output is always clear, sharp and professional.



9600x600 dpi

High Resolution

Communication is key in any business. Colour Print quality can make your company stand out. The Samsung CLX-6220FX/6250FX range excels in its printing capability by featuring a resolution level of 9600x600 dpi and high glossiness level, providing you with consistent professional documents.

Outstanding performance for the demanding office environment

The Samsung CLX-6220FX/6250FX range delivers improved functionality to ensure versatile and high quality document output, whether it be print, copy or scans. Smaller businesses and workgroups can now benefit from having fast multifunction features without compromising on quality.



20/24PPM

High Speed

Users benefit from a high speed printer, copier and scanner that offers high resolution document printing. With a 360/700MHz CPU* and a generous 256MB RAM, the Samsung CLX-6220FX/6250FX range has a 20-24ppm print speed as well as a First Page Out Time of as fast as 17 seconds**.

* 17 sec refers to CLX-6250FX only.

** 700MHz CPU refers to CLX-6250FX only.



Smooth Network Integration

Connect everyone in your office to one network and keep everything running smoothly. They'll share a common printer and you'll save time from servicing multiple machines. And with Ethernet interface you can increase your performance by hooking it up to the network.



Samsung Fine Edge Technology

The edges of fonts appear crisper and clearer, producing a more professional looking document. The Fine Edge function creates precise and tidy documents for ultimate readability.



93 PCL Fonts

A Printer Command Language of 93 sets of fonts allows for more creative documents. Users can create more original and imaginative documents due to the wider choice of fonts.



For an office environment that believes in economical and efficient quality

Consolidation of your office equipment can dramatically reduce overheads across your print, scan, copy and fax environments. By requiring consumables for only one machine and reducing the amount of electricity used, the CLX-6220FX/6250FX range is both cost effective and easy to use.



Economical for your business environment



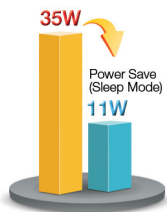
Toner Management

With the Toner Save mode you can monitor and effectively limit your toner usage for a cost effective business solution. Using less toner on each page can extend your cartridge life, significantly reducing your cost per page and helping to meet environmental standards.



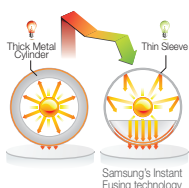
Duplex Printing

With the Samsung CLX-6220FX/6250FX range duplex printing has been made easier and more convenient with the removal of the unnecessary need for paper reinsertion. The duplex automatic document feeder saves time and money by loading several sheets at a time to be able to print double-sided documents automatically, including faxes.



Power Save Mode

Reduces the cost of printing and lowers the temperature of the machine, creating a more durable environment for the printer components. Less wear and tear means extended quality and fewer replacement parts needed.



Energy Efficient

Samsung's Instant Fusing technology utilises low energy lamps for heating the internal print roller rather than the traditional high energy heating elements. This allows for a more energy efficient and faster printer.

User-friendly, multifunction printers for the demanding office environment

Blue Compass Navigation

Samsung's unique Blue Compass Navigation with 4 Line LCD screen is easy to learn and even easier to use, so you can be more productive, more quickly. The navigation array gives you instant access to all the different print functions and controls. Simple, intuitive menus and buttons add to the savings in training and troubleshooting time. 4 Line LCD screen make operations quick and easy, and printer control panels have everything covered, including job status, toner level, paper jam, paper empty and cover open alerts.



Direct USB Interface

The Samsung CLX-6220FX/6250FX range utilises the latest technology to ensure total convenience. With a USB port located on the front of the printer you can easily access and print the files stored on your USB drive. With a wide range of files supported from PDF, BMP, TIFF and JPEG you can save time by printing straight from the USB drive.



The professional solution centre

Professional printing, copying, scanning and faxing gives businesses an effective winning edge.

Samsung's CLX-6220FX/6250FX range provides professional documents, increases productivity and helps to maintain economic running costs.



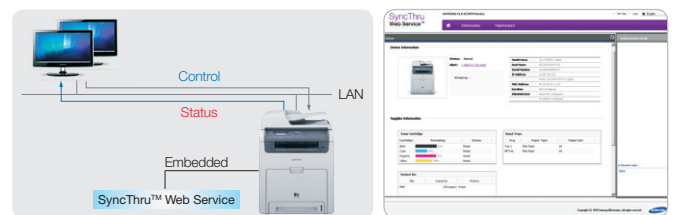
SyncThru™ Admin 5

SyncThru™ Admin 5 device management solution allows IT managers to easily manage and monitor all printer and MFP devices on the network. SyncThru™ Admin 5 enhances productivity with efficient and time-saving device management tools such as remote settings modification and driver distribution. The service can also include job accounting, usage monitoring, authentication, and storage management.

Fleet Management for Multiple Network Printers	Device Discovery	E-mail Notification	Modify Admin Settings	Report Generation Supported by Plug-In

SyncThru™ Web Service

SyncThru™ Web Service is easily and remotely accessible through a web browser and provides administrators with the ability to change network and individual printer settings, upgrade firmware and view your network printer status.



How SyncThru™ Web Service Operates

Screenshot of Web Browser

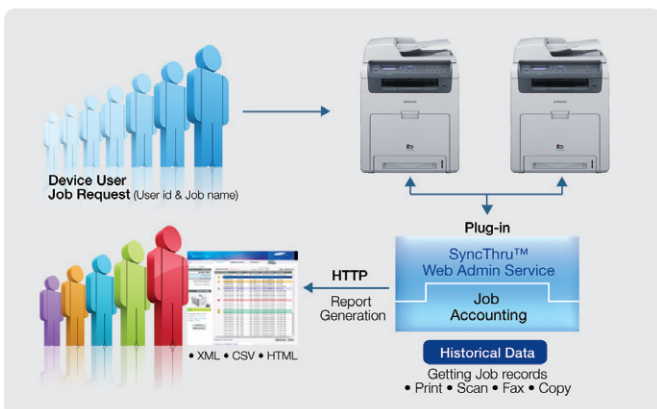
Job Accounting Plug-in for SyncThru™ Admin 5

The Job Accounting Plug-in for SyncThru™ Admin 5 is a usage monitoring and tracking solution for printers and MFPs. The system manages devices and user accounts allowing you to view job accounting information and statistics. This system provides a cost effective and efficient solution. Authorised users can completely manage data and control access with ease.

Secure print without the need for Hard Disk Drive (HDD)



With the addition of optional memory (taking your printer from 256MB up to 768MB) the CLX-6250FX range is able to securely store files directly, offering less chance of failure and ensuring quicker, safer printing.





Specifications

CLX-6220FX

CLX-6250FX

Print		CLX-6220FX		CLX-6250FX	
Speed (Mono)	Up to 20 ppm in A4 (21 ppm in Letter)			Up to 24 ppm in A4 (25 ppm in Letter)	
Speed (Colour)	Up to 20 ppm in A4 (21 ppm in Letter)			Up to 24 ppm in A4 (25 ppm in Letter)	
First Print Out Time (Mono)	Less than 24 sec			Less than 17 sec	
First Print Out Time (Colour)	Less than 24 sec			Less than 17 sec	
Resolution	Up to 9,600 x 600 dpi effective output				
Emulation	PostScript3, PCL5c, PCL6, SPL-C (Samsung Printer Language Colour)		PostScript3, PCL5c, PCL6		
Duplex	Built-in				
Copy		CLX-6220FX		CLX-6250FX	
Speed (Mono)	Up to 20 cpm in A4 (21 cpm in Letter)			Up to 24 cpm in A4 (25 cpm in Letter)	
Speed (Colour)	Up to 20 cpm in A4 (21 cpm in Letter)			Up to 24 cpm in A4 (25 cpm in Letter)	
Resolution	Up to 1,200 X 1,200				
First Copy Out Time (Mono)	Less than 28 sec			Less than 24 sec	
First Copy Out Time (Colour)	Less than 28 sec			Less than 24 sec	
Zoom Rate	25% to 400% for Platen, 25% to 100% for ADF				
Multy Copy	1 ~ 99				
Duplex Copy	Built-in				
Copy Features	ID Copy, Clone Copy, N-up Copy, Poster Copy, Watermark Copy, Book Copy				
Scan		CLX-6220FX		CLX-6250FX	
Compatibility	TWAIN Standard, WIA Standard (Windows XP only)				
Method	Colour Flatbed Scanner or DADF				
Resolution (Optical)	Up to 600 x 600 dpi				
Resolution (Enhanced)	Up to 4,800 x 4,800 dpi				
Scan to	USB/SMB/FTP/Network/Email				
Fax		CLX-6220FX		CLX-6250FX	
Compatibility	ITU-T G3				
Modem Speed	33.6Kbps				
Resolution	Up to 300 x 300 dpi (B/W), 200 x 200 dpi (Colour)				
Memory	less than 4 MB				
Auto Dial	Yes				
Fax Feature	Colour Fax, PC-Fax (Mono Send Only, included in SmarThru Office)				
Paper Handling		CLX-6220FX		CLX-6250FX	
Input Capacity and Types	250-sheet Cassette, 100-sheet Multi-Purpose Tray				
Output Capacity and Types	Up to 170-sheet@80g/m ² Face Down				
Media Size	76 x 127 mm (3" x 5") ~ 216 x 356 mm (8.5" x 14")				
Media Type	Plain paper, Thick, Thin, Preprinted, Colour Pape, Cotton, Recycled				
ADF Capacity	50 sheets @ 75g/m ² , 40 sheets @ 80g/m ²				
ADF Document Size	Width : 142 ~ 216mm (5.6"~8.5"), Length : 148 ~ 356mm (5.8" ~ 14")				
General		CLX-6220FX		CLX-6250FX	
LCD	16 x 4 line LCD (White BackLight)				
Memory / Storage	256 MB (Max. 512 MB)			256 MB (Max. 768 MB) / 160GB HDD(Optional)	
OS Compatibility	Windows 7/2000/XP/2003/Vista(include 64bit) Various Linux OS, Mac OS X 10.3~10.5				
Interface	Hi-Speed USB 2.0, Ethernet 10/100Base-TX / USB host 2.0 (Scan to USB, USB print)				
Noise Level	Less than 53 dBA (Printing) / Less than 35 dBA (Standby)			Less than 54 dBA (Printing) / Less than 35 dBA (Standby)	
Duty Cycle, Monthly	Up to 65,000 pages			Up to 80,000 pages	
Dimension (W x D x H)	468 x 498 x 651 mm (18.4 x 19.6 x 25.6")				
Weight	36kg			37.4kg (82.5lb)	
Consumables		CLX-6220FX		CLX-6250FX	
Black Toner Cartridge	Average Continuous Black Cartridge Yield <ul style="list-style-type: none"> • CLT-K508(2)L : 5,000 standard pages • CLT-K508(2)S : 2,500 standard pages (ships with 2,500 pages standard toner) Declared yield value in accordance with ISO/IEC 19798				
Yellow / Magenta / Cyan Toner Cartridge	Average Continuous Yellow/Magenta/Cyan Cartridge Yield <ul style="list-style-type: none"> • CLT-C508(2)L/CLT-M508(2)L/CLT-Y508(2)L : 4,000 standard pages • CLT-C508(2)S/CLT-M508(2)S/CLT-Y508(2)S : 2,000 standard pages (ships with 2,000 pages standard toner cartridge) Declared yield value in accordance with ISO/IEC 19798 Approx. 50,000 pages (CLT-T508)				
Transfer Belt	Approx. 50,000 pages (CLT-T508)				
Options		CLX-6220FX		CLX-6250FX	
Options	128MB Memory : CLP-MEM201 256MB Memory : CLP-MEM202 Second Cassette Feeder : CLX-S6250A			128MB Memory : ML-MEM150 256MB Memory : ML-MEM160 512MB Memory : ML-MEM170 Second Cassette Feeder : CLX-S6250A Wireless Network Card (802.11 b/g) : ML-NWA40L 160GB HDD : ML-HDK300	

