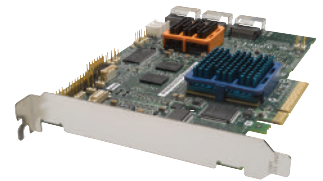


Adaptec® SATA & SAS RAID 3405, 3805, 3085, 31205, 31605



Unified Serial™ controllers deliver scalability and flexibility for high-capacity SATA drives or high-performance SAS drives

Adaptec Unified Serial controllers deliver the ultimate in flexibility and performance for customers who need either high-capacity Serial ATA (SATA) drives or high-performance Serial Attached SCSI (SAS) drives, or the ability to integrate both in a single system. Leveraging SAS technology, these controllers deliver the richest feature set in the market.

Adaptec Unified Serial RAID

This Adaptec RAID controller family is a full line of Unified Serial RAID controllers designed for entry to mid-range servers and workstations.

Hardware features

These controllers support a PCI Express host interface and up to 256MB ECC-protected data cache. An efficient Intel processor delivers excellent performance with low thermal output. The family includes 4- and 8-port models as well as industry-first 12- and 16-port designs. The new Adaptec RAID 3085 with two x4 connectors also offers the industry's first path failover for external data path redundancy.

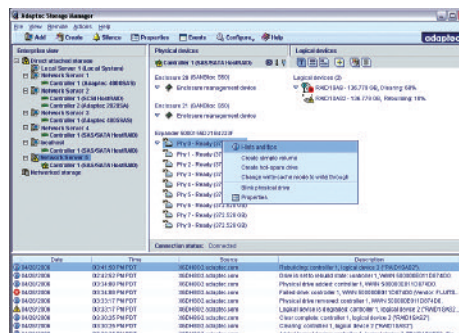
Advanced data protection

Adaptec RAID Code (ARC) delivers the industry's most advanced feature set. The Adaptec Advanced Data Protection Suite delivers improved hot spare performance (RAID 5EE) and a patented RAID 6/60 technology allowing for up to two simultaneous drive failures.

ARC supports array sizes up to 512TB – allowing full usage of new, higher capacity SATA drives. Optimized Disk Utilization offers the ability to create arrays and utilise all available capacity on dissimilar drive sizes. As disk drive capacities grow, replacing a failed drive no longer results in wasted space on new larger drives, increasing the value of existing investments.

Easy-to-use storage management

This Adaptec Unified Serial RAID family operates under Adaptec Storage Manager™, a one-view tool that centralises management of all Adaptec RAID products. The software enables remote configuration and monitoring of RAID arrays through secure, encrypted communications. The intuitive management tool simplifies RAID array creation and management pop-up tips and online help.



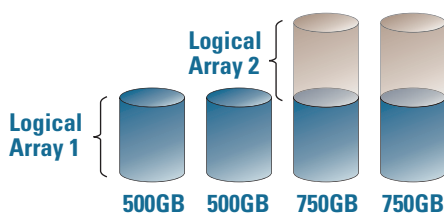
Compatibility, reliability and support

Adaptec has been delivering storage and I/O solutions for more than 24 years. In fact, Adaptec is the undisputed RAID leader; no other vendor's technology is more proven. The Adaptec RAID Unified Serial family has been extensively tested with third-party components to deliver the utmost in compatibility. The cards are backed by a three-year warranty and legendary Adaptec technical support.

Product Highlights

- SATA and SAS compliant
- PCI Express host interface
- 3Gb/s per port
- RAID levels 0, 1, 1E, 10, 5, 50, 5EE, 6, 60
- LED header for drive activity and failure indication
- SES2 and SGPIO enclosure management
- Up to 256MB DDR2 fixed data cache
- Operating system support for Windows, Linux, NetWare, SCO Unix, Sun Solaris x86 and FreeBSD
- RoHS compliant

Optimized Disk Utilization



Excess capacity used to create another array.

