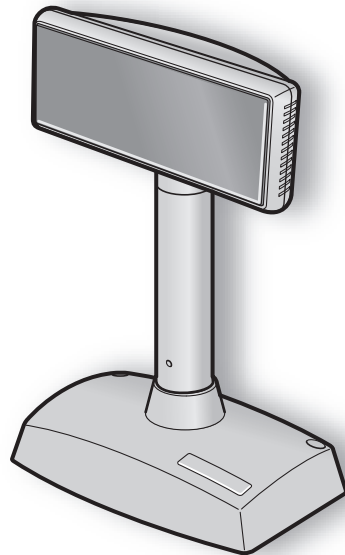


# Customer Display

## SCD122U

### *Hardware Manual*



**star** 

**Federal Communications Commission**  
**Radio Frequency Interference**  
**Statement**

This equipment has been tested and found to comply with the limits for a Class A digital device, pursuant to Part 15 of the FCC Rules. These limits are designed to provide reasonable protection against harmful interference when the equipment is operated in a commercial environment. This equipment generates, uses and can radiate radio frequency energy and, if not installed and used in accordance with the instruction manual, may cause harmful interference to radio communications. Operation of this equipment in a residential area is likely to cause harmful interference in which case the user will be required to correct the interference at his own expense. For compliance with the Federal Noise Interference Standard, this equipment requires a shielded cable.  
*This statement will be applied only for the equipments marketed in U.S.A.*

**Statement of**  
**The Canadian Department of Communications**  
**Radio Interference Regulations**

This digital apparatus does not exceed the Class A limits for radio noise emissions from digital apparatus set out in the Radio Interference Regulations of the Canadian Department of Communications.  
Le présent appareil numérique n'émet pas de bruits radioélectriques dépassant les limites applicables aux appareils numériques de la classe A prescrites dans le Règlement sur le brouillage radioélectrique édicté par le ministère des Communications du Canada.  
*The above statement applies only to equipments marketed in Canada.*

**Trademark acknowledgments**

SCD122U: Star Micronics Co., Ltd.

**Notice**

- All rights reserved. Reproduction of any part of this manual in any form whatsoever, without STAR's express permission is forbidden.
- The contents of this manual are subject to change without notice.
- All efforts have been made to ensure the accuracy of the contents of this manual at the time of going to press. However, should any errors be detected, STAR would greatly appreciate being informed of them.
- The above notwithstanding, STAR can assume no responsibility for any errors in this manual.

© Copyright 2008 Star Micronics Co., LTD.

## Safety Precautions

This document uses the two headings shown below to call attention to potential hazards. Failure to observe the information provided under or alongside these headings may lead to injury or damage to your system. Be sure that you understand the meaning of each heading before you proceed.

---

### **⚠ WARNING**

- ✓ *Indicates a potentially lethal hazard. Failure to observe a WARNING may result in severe injury or death.*

---

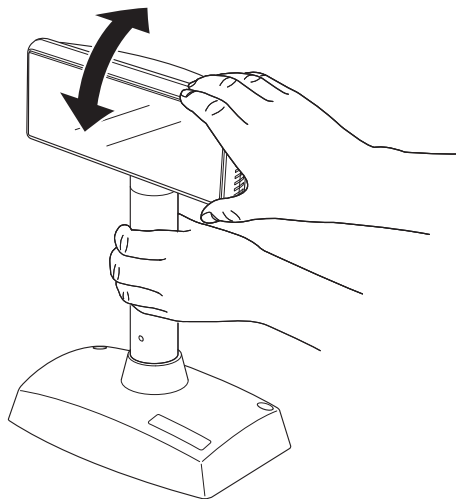
### **⚠ CAUTION**

- ✓ *Failure to observe a CAUTION may result in personal injury, or in damage to equipment or other property.*

---

### **⚠ WARNING**

- ✓ *Shut down your equipment immediately if it produces smoke, a strange odor, or unusual noise. Continued use may lead to fire. Immediately turn the power off and contact your dealer or a Star service center for advice.*
- ✓ *Never attempt to repair this product yourself. Improper repair work can be dangerous. Tampering with this product may result in injury or fire.*
- ✓ *Never disassemble or modify this product. Tampering with this product may result in injury or fire.*
- ✓ *Do not allow foreign matter to fall into the equipment. Penetration of foreign objects may lead to fire.*
- ✓ *Be sure to connect the USB port.*
- ✓ *If water or other liquid spills into this equipment, pull out the USB cable immediately and contact your dealer or a Star service center for advice. Continued usage may lead to fire. To adjust the angle of the display unit, be sure to hold it by its support pillar.*
- ✓ *Hold it by its support pillar to adjust the angle of the display unit.*



---

**⚠ CAUTION**

- ✓ *Do not use in locations subject to high humidity or dust levels.  
Excessive humidity and dust may cause equipment damage, fire, or shock.*
  - ✓ *Do not place heavy objects on top of this product. Never stand or lean on this product.  
Equipment may fall or collapse, causing breakage and possible injury.*
  - ✓ *Do not plug in the cables differently from the instructions in the manual.  
Wrong connection may cause equipment damage and fire.*
  - ✓ *Hold the plug when pulling out the cable.*
  - ✓ *Do not use this product near the device generating electric noises.*
  - ✓ *Do not put heavy objects on the cable, and bend it heavily.*
  - ✓ *Do not come closer to the display.*
  - ✓ *Do not use this product in the dark.*
-

# TABLE OF CONTENTS

<b>1. Unpacking</b> .....	<b>1</b>
1-1. Unpacking .....	1
<b>2. Installation Examples</b> .....	<b>2</b>
2-1. Selecting a Base Stand .....	2
2-2. Combinations of Support Pillars .....	2
<b>3. Setting Up</b> .....	<b>3</b>
3-1. Using the Surface-Mount Stand .....	3
3-2. Installing Support Pillars.....	4
3-3. Using the Fixed-Mount Stand .....	6
3-4. Installing the Software .....	7
<b>4. Setting the DIP Switch</b> .....	<b>8</b>
<b>5. Specifications</b> .....	<b>10</b>
5-1. General Specifications .....	10
<b>6. Character Code List</b> .....	<b>12</b>
6-1. International Character Set List .....	12
6-2. Character Code Table.....	12

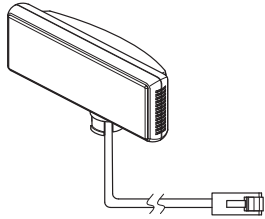
Please access the following URL

<http://www.star-m.jp/eng/dl/dl02.htm>  
for the latest revision of the manual.

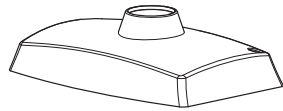
# 1. Unpacking

## 1-1. Unpacking

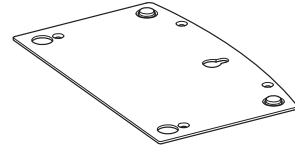
After unpacking the unit, check that all the necessary accessories are included in the package.



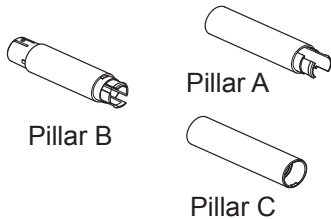
Display (1 unit)



Stand (2 items)



Stand Plate (2 units)



Extension Support  
(3 pieces)



Screw (4 pieces)  
Nut (3 pieces)  
Washer (6 pieces)

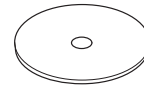


Screw  
(4 pieces)

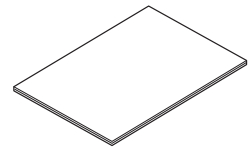


Screw  
(4 pieces)

Screw Bag



CD-ROM  
(1 piece)



Safety Instruction Sheet  
(1 piece)



Rubber Foot (2 pieces)

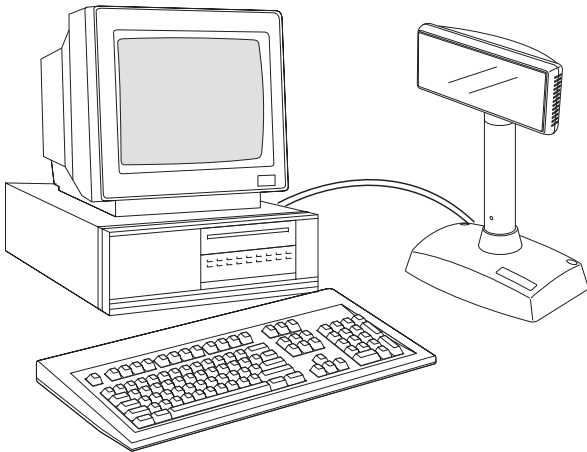
If anything is missing, contact the dealer where you bought the equipment and ask them to supply the missing part. Note that it is a good idea to keep the original box and all the packing materials just in case you need to pack the equipment up again and send it somewhere at a later

## 2. Installation Examples

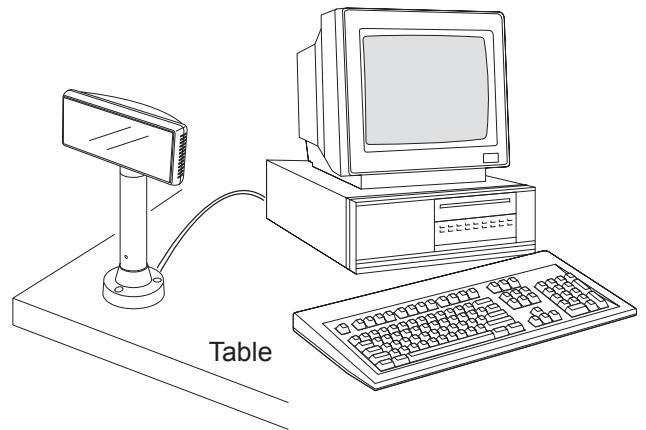
This customer display consists of three pieces: the display unit, support pillar, and base stand. For the base stand, two choices are available: a surface-mount stand that can be moved freely, and a fixed-mount stand that is screwed onto a table or the like.

To bring the display unit to an appropriate viewing height, the supplied support pillars can be combined to attain four different heights.

### 2-1. Selecting a Base Stand



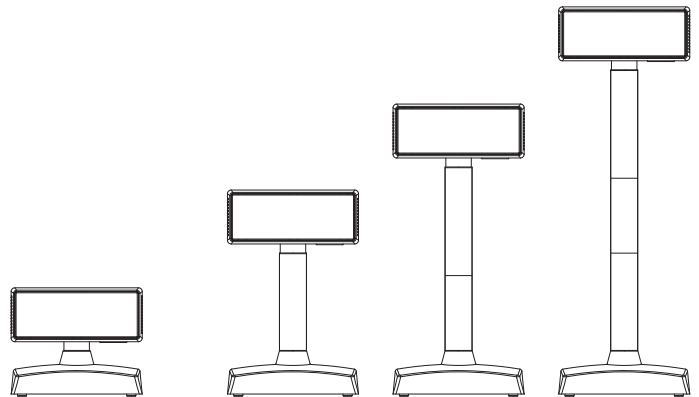
Surface-mount stand example



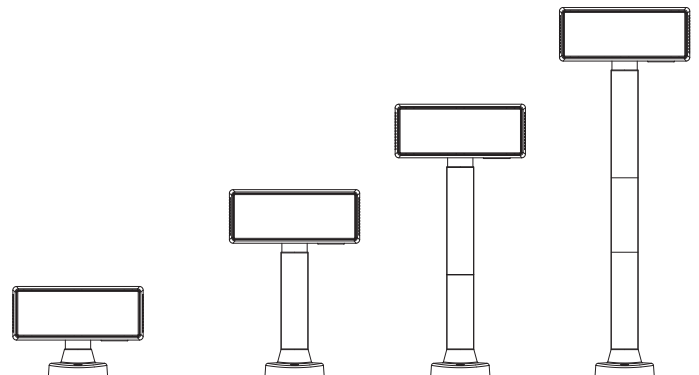
Fixed-mount stand example

### 2-2. Combinations of Support Pillars

Surface-mount stand example



Fixed-mount stand example

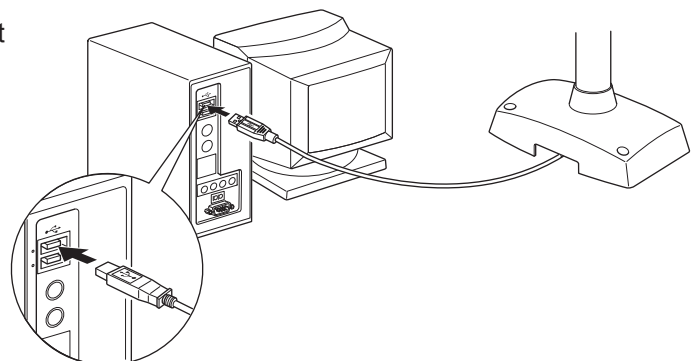
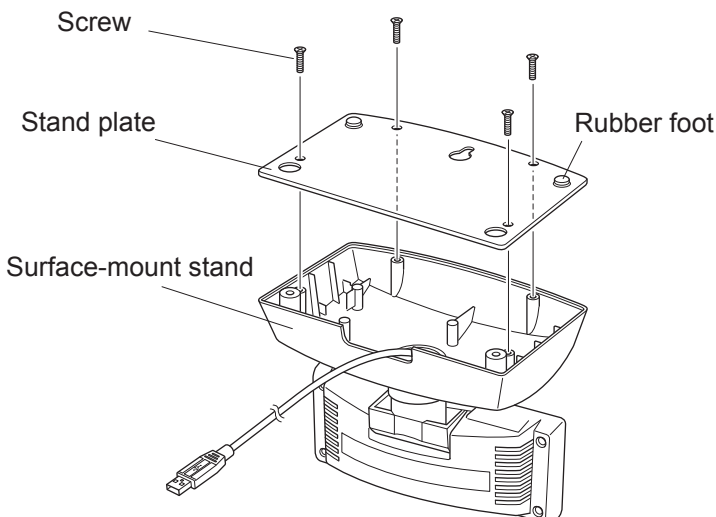
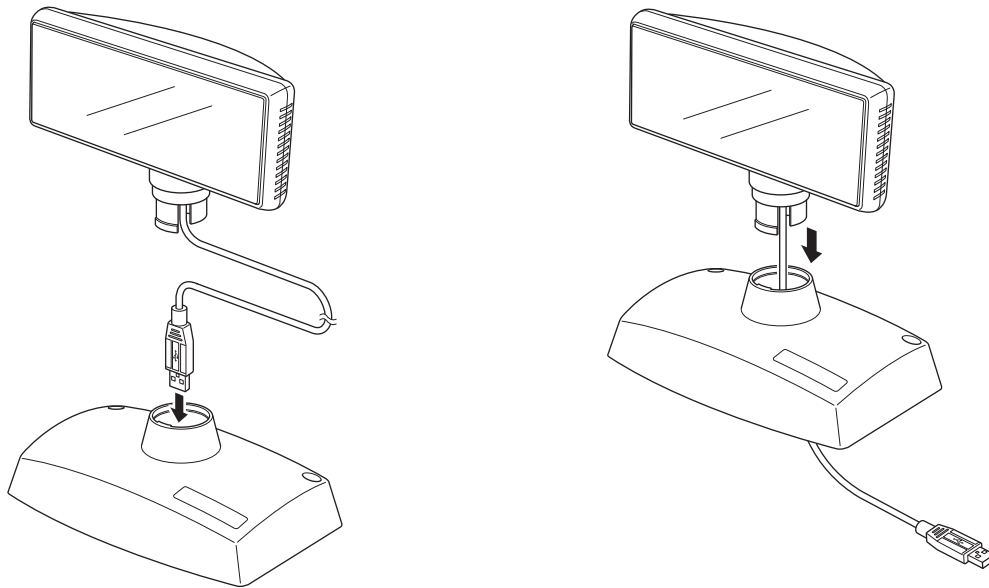


# 3. Setting Up

## 3-1. Using the Surface-Mount Stand

- 1) Route the USB interface cable through the surface-mount stand.
- 2) Insert the stem of the display unit into the surface-mount stand until it clicks into place.
- 3) Pull the USB interface cable out of the cutout in the surface-mount stand as shown below.
- 4) Attach the stand plate to the surface-mount position of the surface-mount stand, and tighten it with four screws.
- 5) Connect the USB interface cable into the USB port of the host computer.

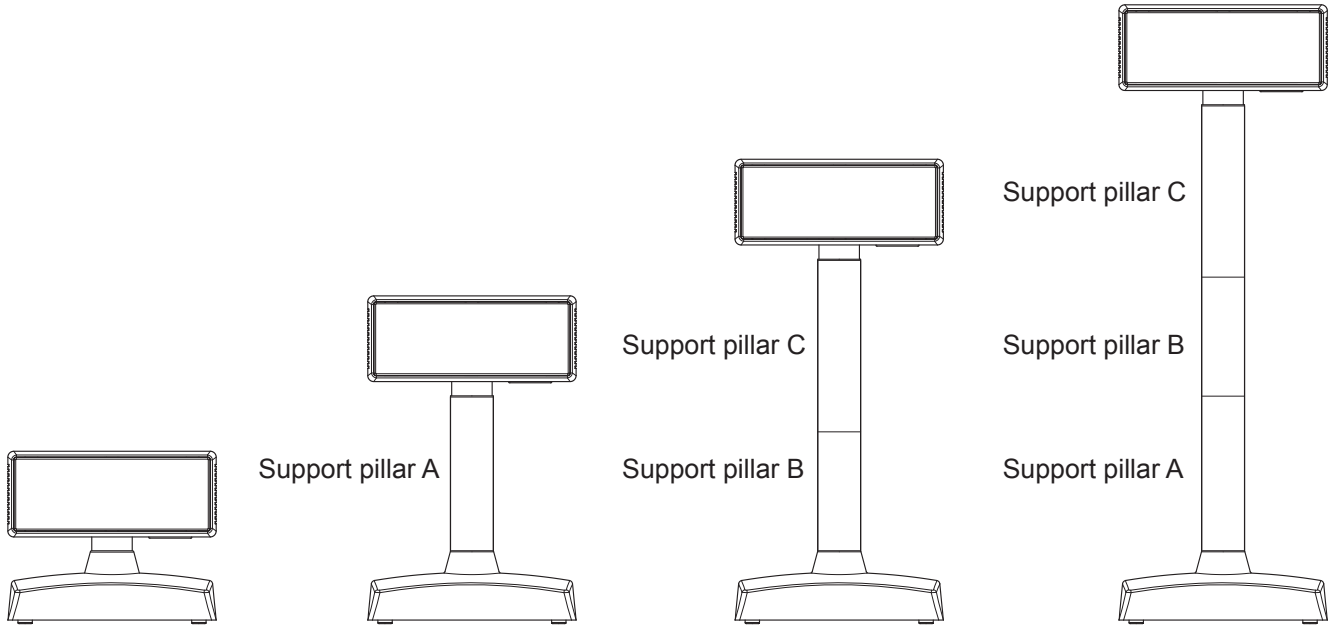
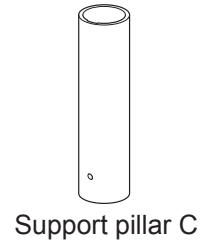
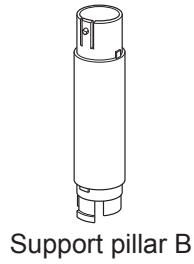
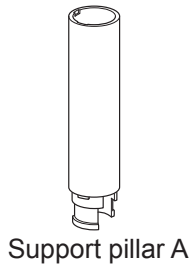
**Note:** The rubber feet come already affixed to the stand plate. In addition, two rubber feet are supplied with the unit. They are spares to be used if the existing ones become detached.



## 3-2. Installing Support Pillars

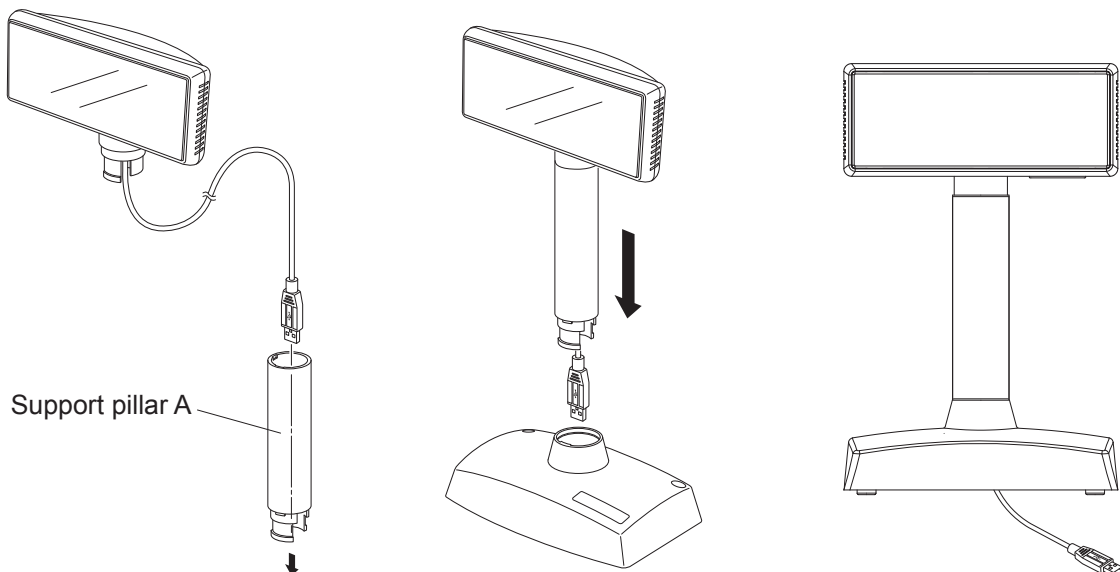
To use only one of the support pillars, install support pillar C.

To use two of them, install support pillars B and C. To use three of them, install support pillars A, B, and C.



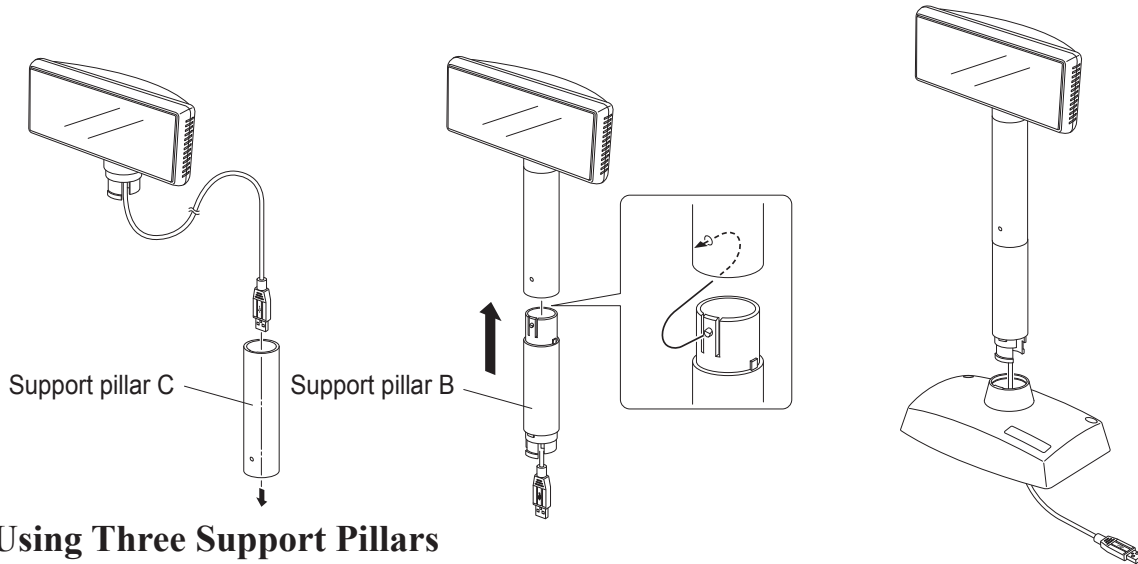
### 3-2-1. Using One Support Pillar

- 1) Route the USB interface cable through support pillar A, and insert the stem of the display unit into support pillar A.
- 2) Insert support pillar A into the surface-mount stand until it clicks into place.



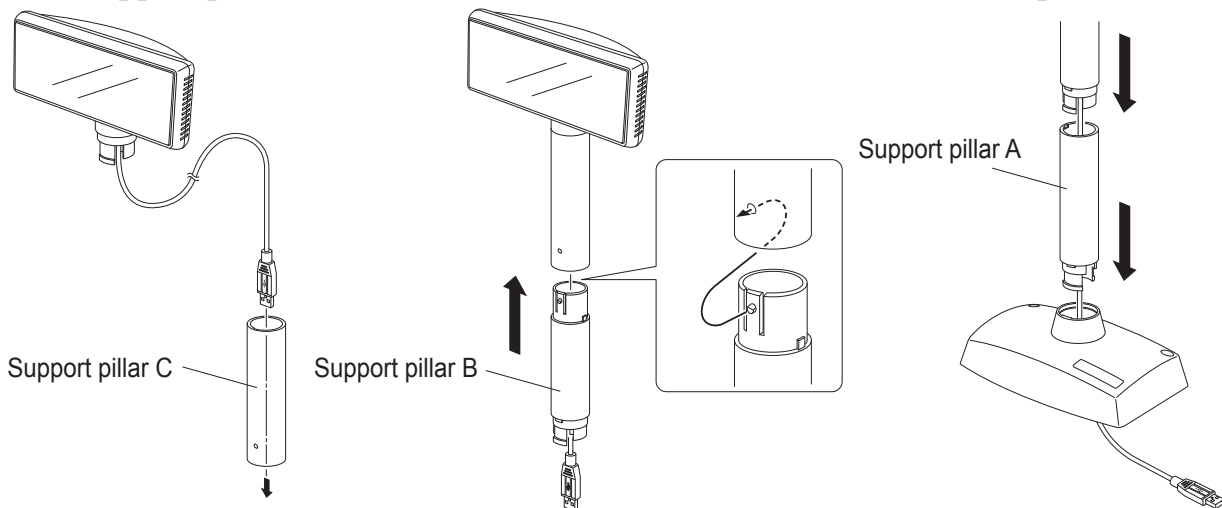
### 3-2-2. Using Two Support Pillars

- 1) Route the USB interface cable through support pillar C, and insert the stem of the display unit into support pillar C.
- 2) Insert support pillar B into support pillar C until it clicks into place.
- 3) Insert support pillar B into the surface-mount stand until it clicks into place.



### 3-2-3. Using Three Support Pillars

- 1) Route the USB interface cable through support pillar C, and insert the stem of the display unit into support pillar C.
- 2) Insert support pillar B into support pillar C until it clicks into place.
- 3) Insert support pillar C into support pillar A until it clicks into place.
- 4) Insert support pillar C into the surface-mount stand until it clicks into place.



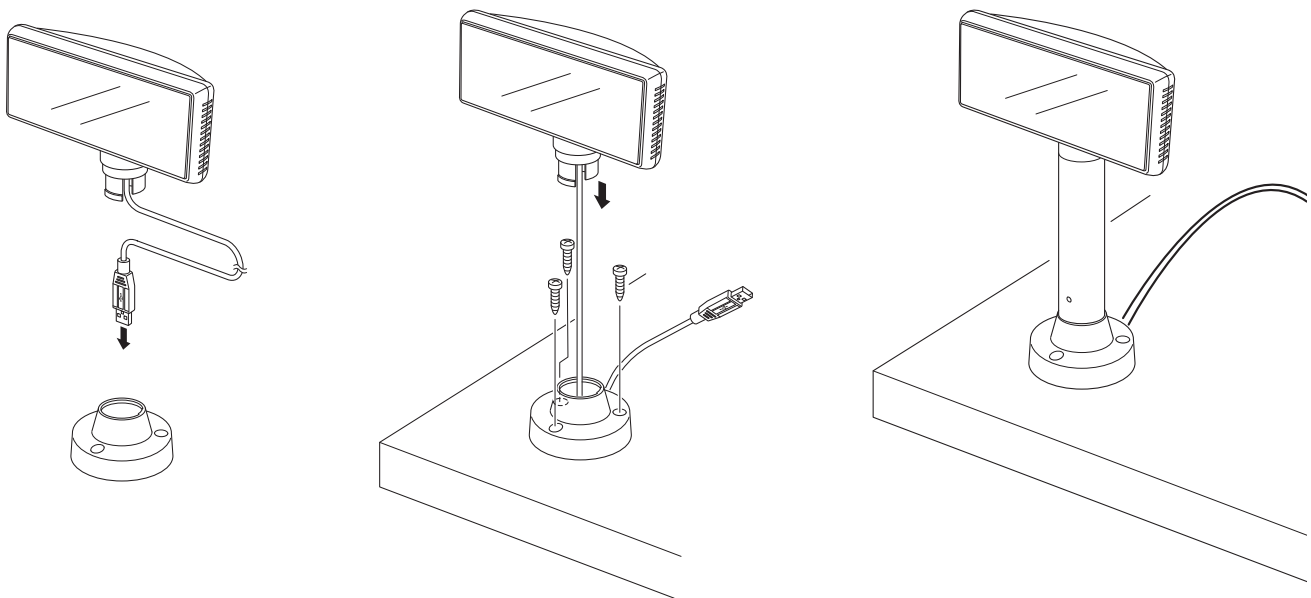
#### **⚠ CAUTION**

*The USB interface cable has sufficient length to accommodate the maximum length of the support pillar with all the pieces connected. If fewer pieces are used for the support pillar, there will be some slack in the cable. If you push the extra length of the cable into the support pillar to take up the slack, make sure the cable moves freely.*

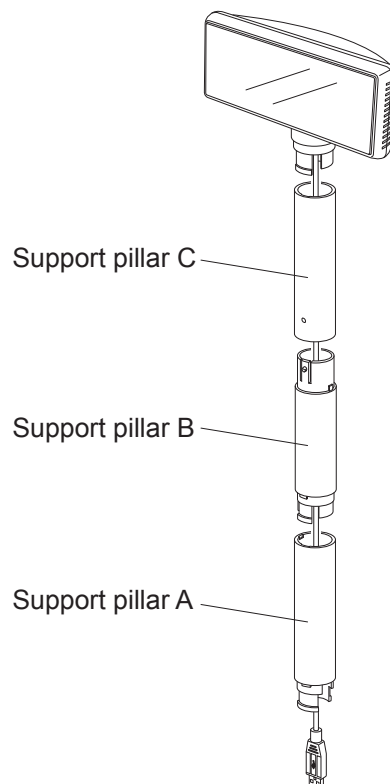
*As the display unit is turned, it pulls on the cable. Thus, if the display unit is turned while the cable is tucked tightly into the support pillar, it can apply undue force on the connector and lead to a contact failure. Therefore, do not tuck the cable tightly into the support pillar.*

### 3-3. Using the Fixed-Mount Stand

- 1) Route the USB interface cable through the fixed-mount stand and pull it out of the cutout in the fixed-mount stand.
- 2) Insert the stem of the display unit into the fixed-mount stand until it clicks into place.
- 3) Tighten the three screws to mount the fixed-mount stand onto a table or the like.
- 4) Connect the USB interface cable into the USB port of the host computer.



To extend the length of the support pillar, refer to “3-2. Installing Support Pillars”.



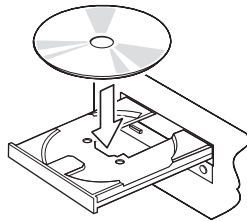
### 3-4. Installing the Software

Here is the procedure for installing the driver and utility software, which are stored on the supplied CD-ROM.

The procedure applies to the Windows operating systems shown below.

- Windows 2000
- Windows XP
- Windows Vista 32-Bit

- (1) Turn ON the power to your PC to start Windows.
- (2) Insert the supplied CD-ROM (Drivers and Utilities) into the CD-ROM drive.



- (3) Follow the instructions that appear on the screen.

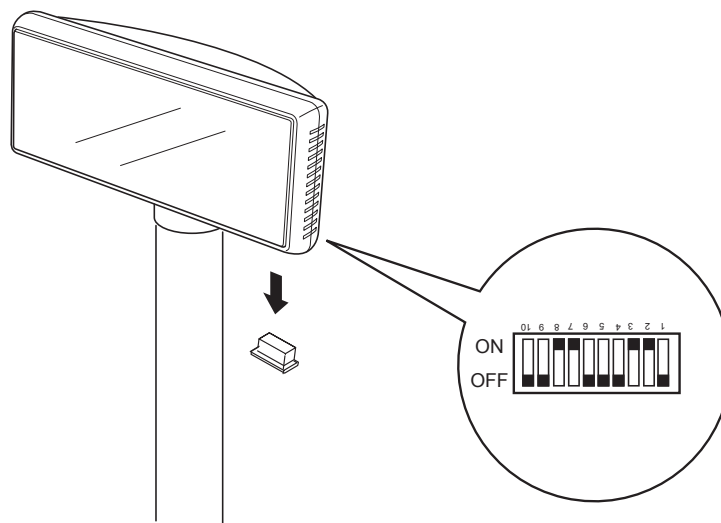
Refer to the software manual in the Documents folder of the CD-ROM for more information.

For instructions on the Windows Vista 64-Bit, refer to the software manual location in the “Documents” folder of the CD-ROM.

## 4. Setting the DIP Switch

A DIP switch located at the bottom of the display unit enables the various settings as shown in the table on the next page. The settings may be changed as follows.

- (1) Power OFF the host computer or disconnect the USB interface cable.
- (2) Remove the cover from the DIP switch located at the bottom of the display unit.



- (3) Use a pointed tool to change the settings of the DIP switch.
- (4) Reinstall the cover on the DIP switch.

**Note:** The new setting takes effect when the host computer is powered ON or the USB interface cable is reconnected.

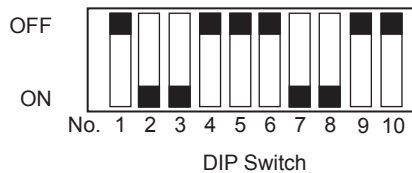
---

### **⚠ CAUTION**

*Disconnect the USB interface cable before removing the cover from the DIP switch. If the cover is removed while the host computer is running and the USB interface cable is connected, the unit may become damaged due to a short circuit.*

---

## Functions of DIP Switch



DIP switch provides the following functions:

Switch	Description	ON	OFF
1	Demo mode	Active	Inactive
2-5	International character set	See below	
6-8	Code page	See below	
9	Cursor	Active	Inactive
10	Emulation	ESC/POS mode	Star mode

The factory setting has switches 2,3,7, and 8 ON, and the remainder OFF.

### ■ International character set

Switch 5	Switch 4	Switch 3	Switch 2	Character set
OFF	OFF	OFF	OFF	USA
OFF	OFF	OFF	ON	France
OFF	OFF	ON	OFF	Germany
OFF	OFF	ON	ON	UK *
OFF	ON	OFF	OFF	Denmark I
OFF	ON	OFF	ON	Sweden
OFF	ON	ON	OFF	Italy
OFF	ON	ON	ON	Spain
ON	OFF	OFF	OFF	Japan
ON	OFF	OFF	ON	Norway
ON	OFF	ON	OFF	Denmark II
ON	OFF	ON	ON	Spain2
ON	ON	OFF	OFF	Latin America
ON	ON	OFF	ON	Korea
ON	ON	ON	OFF	Ireland
ON	ON	ON	ON	Legal

\* Indicates factory setting

### ■ Code page

Switch 8	Switch 7	Switch 6	Code page	Page No.
OFF	OFF	OFF	PC437(USA, Standard Europe)	0
OFF	OFF	ON	Katakana	1
OFF	ON	OFF	PC860(Portuguese)	3
OFF	ON	ON	PC863(Canadian-French)	4
ON	OFF	OFF	PC865(Nordic)	5
ON	OFF	ON	PC866(Cyrillic Russian)	17
ON	ON	OFF	PC858(Europe)	19 *
ON	ON	ON	Katakana 2	255

\* Indicates factory setting

# 5. Specifications

## 5-1. General Specifications

### (1) Display unit

Display type:	vacuum fluorescent display tube
Display characters:	40 characters (20 digits x 2 lines)
Display color:	Blue green
Character composition:	5 x 7 dot matrix
Character size:	3.5 x 5.0 mm
Character type:	95 alphanumeric characters
Graphic characters:	128 characters
Supply voltage:	5V 500mA (supplied through USB port)
Power consumption:	Approx. 2W (DC 5V 500mA)

### (2) External dimensions

Display unit: Width 175mm x Depth 53 mm x Height 72 mm

#### Height

Using surface-mount stand: 142 mm, 272 mm., 387 mm, 517 mm

Using fixed-mount stand: 124 mm, 254 mm, 369 mm, 499 mm

#### Base

Surface-mount stand: Width 175 mm x Depth 110 mm x Height 61 mm

Fixed-mount stand: ø80 x Height 40 mm

Tilt angle: 30°max.

Horizontal rotation angle: 300°max.

Weight: Approx. 840 g

### (3) Interface

Interface: USB 2.0

### (4) Reliability specification

MTBF (Mean Time Between Failures): 20,000 hours (vacuum fluorescent display tube only) half-life

### (5) Operating environment

Temperature 5°C to 45°C

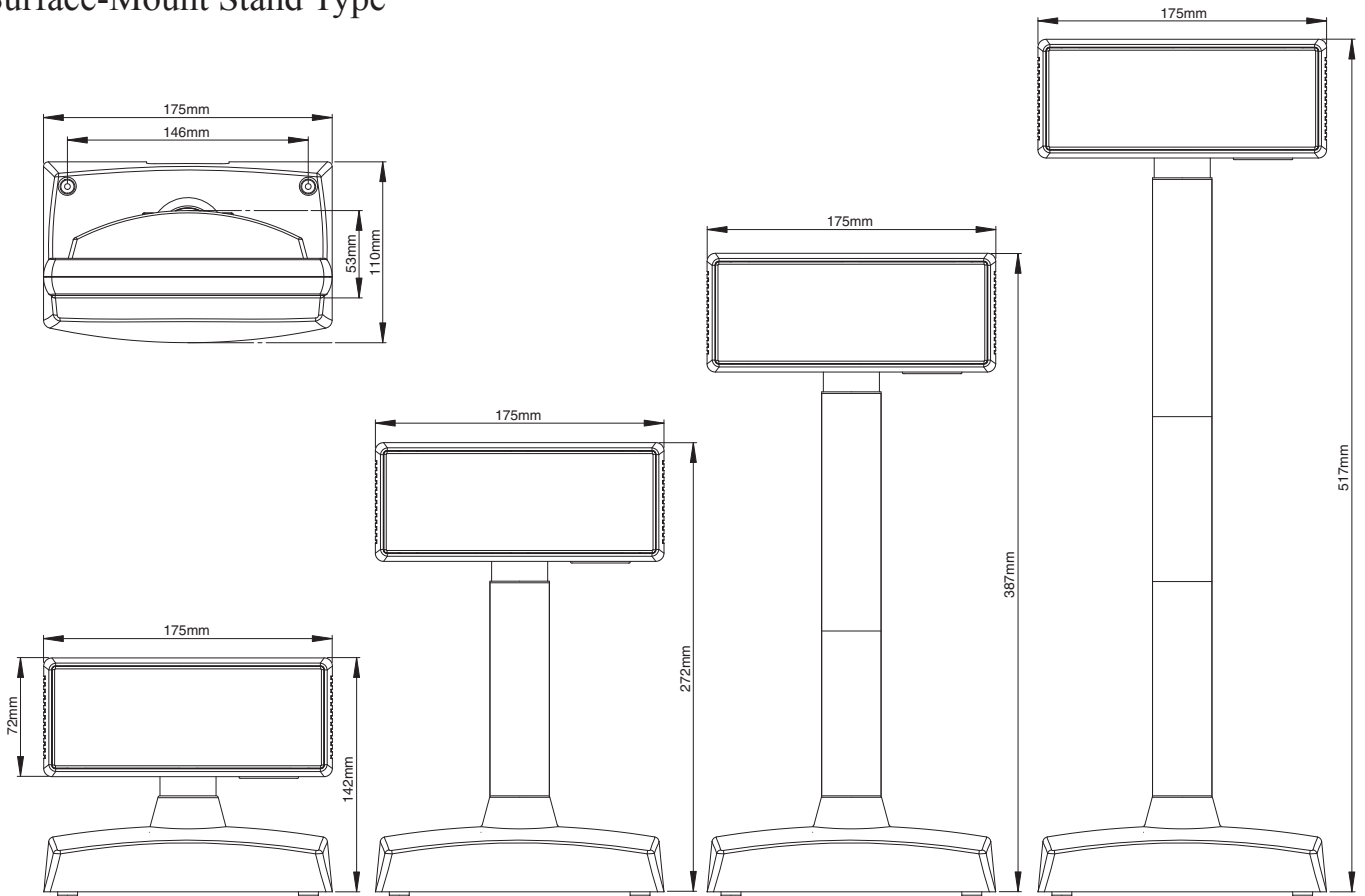
Humidity: 10% RH to 90% RH (no condensation)

### (6) Storage environment

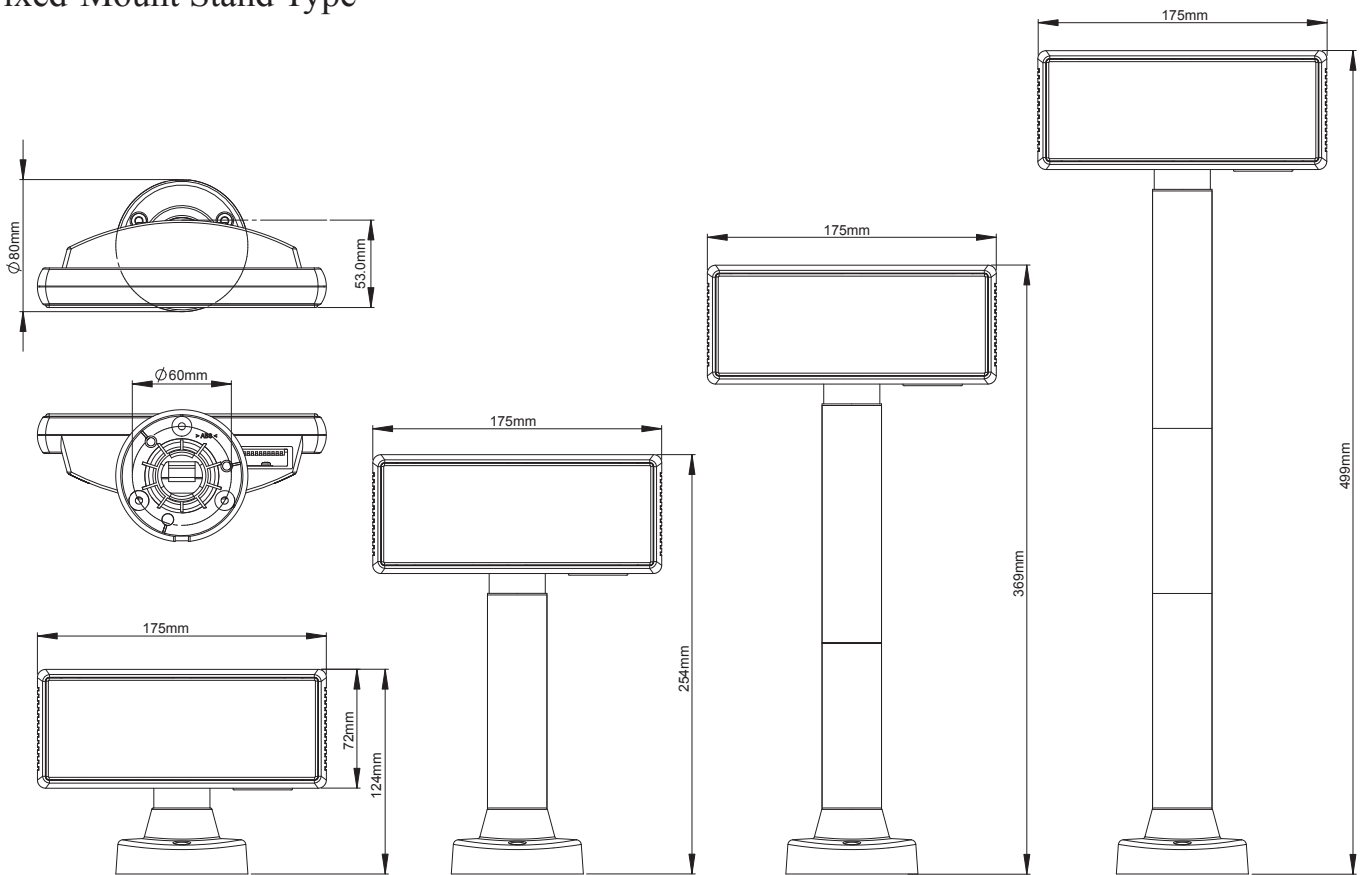
Temperature -20°C to 60°C

Humidity: 10% RH to 90% RH (no condensation)

## Surface-Mount Stand Type



## Fixed-Mount Stand Type



# 6. Character Code List

## 6-1. International Character Set List

Country	23	24	40	58	5A	5B	5C	5D	5E	60	7B	7C	7D	7E
U.S.A	#	\$	@	X	Z	[	\	]	^	~	{		}	~
France	#	\$	à	X	Z	"	ç	§	^	~	é	ù	è	~
Germany	#	\$	§	X	Z	Ä	Ö	Ü	^	~	ä	ö	ü	ß
UK	£	\$	@	X	Z	[	\	]	^	~	{		}	~
Denmark I	#	\$	@	X	Z	Æ	Ø	Å	^	~	æ	ø	å	~
Sweden	#	¤	É	X	Z	Ä	Ö	Å	Ü	é	ä	ö	å	Ü
Italy	#	\$	@	X	Z	"	\	é	^	~	ù	à	ò	è
Spain I	¢	\$	@	X	Z	i	Ñ	¿	^	~	"	ñ	}	~
Japan	#	\$	@	X	Z	[	¥	]	^	~	{		}	~
Norway	#	¤	É	X	Z	Æ	Ø	Å	Ü	é	æ	ø	å	Ü
Denmark II	#	\$	É	X	Z	Æ	Ø	Å	Ü	é	æ	ø	å	Ü
Spain II	#	\$	á	X	Z	i	Ñ	¿	é	~	i	ñ	ó	ú
Latin America	#	\$	á	X	Z	i	Ñ	¿	é	ü	i	ñ	ó	ú
Korea	#	\$	@	X	Z	[	₩	]	^	~	{		}	~
Ireland	#	\$	@	Ú	'	[	\	]	^	~	Á	É	Ó	~
Legal	#	\$	§	X	Z	"	'	"	¶	©	®	™	†	™

## 6-2. Character Code Table

**Note:** Characters 20(H) to 7E(H) vary with the setting of the international character set.

- PC437 (USA,Standard Europe) : (00)H
- Katakana : (01)H

	0	1	2	3	4	5	6	7	8	9	A	B	C	D	E	F
0	0	@	P	`	p	Ç	É	á	⌘	α	≡					
1	!	1	A	Q	a	q	ü	æ	í	⌘	τ	β	±			
2	"	2	B	R	b	r	é	Æ	ó	⌘	τ	π	Γ	≥		
3	#	3	C	S	c	s	â	ô	ú		†	μ	π	≤		
4	\$	4	D	T	d	t	ä	ö	ñ	†	-	£	Σ	∫		
5	%	5	E	U	e	u	à	ò	Ñ	†	†	ƒ	σ	J		
6	&	6	F	V	f	v	ä	ü	æ	†	†	π	μ	÷		
7	'	7	G	W	g	w	ç	ú	ö	π	†	†	τ	≈		
8	(	8	H	X	h	x	ê	ÿ	¿	†	†	†	†	°		
9	)	9	I	Y	i	y	ë	ö	-	†	†	†	†	•		
A	*	A	J	Z	j	z	è	ü	-	†	†	†	†	•		
B	+	B	K	[	k	{	í	ø	½	†	†	†	†	•	√	
C	,	C	<	L	\		í	£	¼	†	†	†	†	•	∞	n
D	-	D	=	M	]	m	}	í	¥	†	†	†	†	•	∞	²
E	.	E	>	N	^	n	~	Ä	Ⓢ	†	†	†	†	•	∞	
F	/	F	?	0	_	o	Å	ƒ	»	†	†	†	†	•	∞	∞

	0	1	2	3	4	5	6	7	8	9	A	B	C	D	E	F
0	0	@	P	`	p	┘	-	ㄱ	ㄴ	ㄷ	ㄹ	ㅁ	ㅂ	ㅅ	ㅆ	ㅈ
1	!	1	A	Q	a	q	।	ㄱ	。	ㅍ	ㅊ	ㅌ	ㅎ	ㅑ	ㅓ	ㅕ
2	"	2	B	R	b	r	-	ㅁ	ㅎ	ㅑ	ㅓ	ㅕ	ㅏ	ㅑ	ㅓ	ㅕ
3	#	3	C	S	c	s	।	ㅁ	ㅎ	ㅑ	ㅓ	ㅕ	ㅏ	ㅑ	ㅓ	ㅕ
4	\$	4	D	T	d	t	-	ㅁ	ㅎ	ㅑ	ㅓ	ㅕ	ㅏ	ㅑ	ㅓ	ㅕ
5	%	5	E	U	e	u	।	ㅁ	ㅎ	ㅑ	ㅓ	ㅕ	ㅏ	ㅑ	ㅓ	ㅕ
6	&	6	F	V	f	v	-	ㅁ	ㅎ	ㅑ	ㅓ	ㅕ	ㅏ	ㅑ	ㅓ	ㅕ
7	'	7	G	W	g	w	।	ㅁ	ㅎ	ㅑ	ㅓ	ㅕ	ㅏ	ㅑ	ㅓ	ㅕ
8	(	8	H	X	h	x	-	ㅁ	ㅎ	ㅑ	ㅓ	ㅕ	ㅏ	ㅑ	ㅓ	ㅕ
9	)	9	I	Y	i	y	।	ㅁ	ㅎ	ㅑ	ㅓ	ㅕ	ㅏ	ㅑ	ㅓ	ㅕ
A	*	A	J	Z	j	z	-	ㅁ	ㅎ	ㅑ	ㅓ	ㅕ	ㅏ	ㅑ	ㅓ	ㅕ
B	+	B	K	[	k	{	।	ㅁ	ㅎ	ㅑ	ㅓ	ㅕ	ㅏ	ㅑ	ㅓ	ㅕ
C	,	C	<	L	\		।	ㅁ	ㅎ	ㅑ	ㅓ	ㅕ	ㅏ	ㅑ	ㅓ	ㅕ
D	-	D	=	M	]	m	}	।	ㅁ	ㅎ	ㅑ	ㅓ	ㅕ	ㅏ	ㅑ	ㅓ
E	.	E	>	N	^	n	~	।	ㅁ	ㅎ	ㅑ	ㅓ	ㅕ	ㅏ	ㅑ	ㅓ
F	/	F	?	0	_	o	ㅁ	ㅎ	ㅑ	ㅓ	ㅕ	ㅏ	ㅑ	ㅓ	ㅕ	ㅏ

• PC860 (Portuguese) : (03)H

	0	1	2	3	4	5	6	7	8	9	A	B	C	D	E	F	
0	0	@	P	`	p	Ç	É	á	¸	µ	α	≡					
1	!	1	A	Q	a	q	ü	Ä	í	¸	τ	β	±				
2	"	2	B	R	b	r	é	ê	ó	¸	π	Γ	≥				
3	#	3	C	S	c	s	â	ô	ú		¸	π	≤				
4	\$	4	D	T	d	t	ã	õ	ñ		-	Σ	∫				
5	%	5	E	U	e	u	à	ò	Ñ		+	∫	σ	∫			
6	&	6	F	V	f	v	Á	Ú	¸		¸	π	μ	+			
7	'	7	G	W	g	w	ç	ù	õ	¸	π	¸	τ	≈			
8	(	8	H	X	h	x	ê	í	ç	¸	¸	¸	Φ	°			
9	)	9	I	Y	i	y	ê	õ	¸		¸	¸	θ	•			
A	*	:	J	Z	j	z	è	ü	-		¸	¸	¸	Ω	•		
B	+	;	K	[	k	{	í	ø	½	¸	¸	¸	¸	δ	√		
C	,	<	L	\	l		í	£	¼	¸	¸	¸	¸	∞	°		
D	-	=	M	]	m	}	ì	ü	¸	¸	¸	¸	¸	∅	²		
E	.	>	N	^	n	~	À	¸	¸	¸	¸	¸	¸	¸	¸	¸	
F	/	?	0	_	o	¸	Á	ó	¸	¸	¸	¸	¸	¸	¸	¸	

• PC863 (Canadian-French) : (04)H

	0	1	2	3	4	5	6	7	8	9	A	B	C	D	E	F		
0	0	@	P	`	p	Ç	É	á	¸	µ	α	≡						
1	!	1	A	Q	a	q	ü	Ä	í	¸	τ	β	±					
2	"	2	B	R	b	r	é	ê	ó	¸	π	Γ	≥					
3	#	3	C	S	c	s	â	ô	ú		¸	π	≤					
4	\$	4	D	T	d	t	À	È	"		-	Σ	∫					
5	%	5	E	U	e	u	à	ï	¸		+	∫	σ	∫				
6	&	6	F	V	f	v	¶	Ù	³		¸	π	μ	+				
7	'	7	G	W	g	w	ç	ù	-	¸	¸	¸	¸	τ	≈			
8	(	8	H	X	h	x	ê	í	ç	¸	¸	¸	¸	Φ	°			
9	)	9	I	Y	i	y	è	õ	-		¸	¸	¸	θ	•			
A	*	:	J	Z	j	z	è	ü	-		¸	¸	¸	¸	Ω	•		
B	+	;	K	[	k	{	í	ø	½	¸	¸	¸	¸	δ	√			
C	,	<	L	\	l		í	£	¼	¸	¸	¸	¸	∞	°			
D	-	=	M	]	m	}	ì	ü	¸	¸	¸	¸	¸	∅	²			
E	.	>	N	^	n	~	À	¸	¸	¸	¸	¸	¸	¸	¸	¸		
F	/	?	0	_	o	¸	¸	¸	¸	¸	¸	¸	¸	¸	¸	¸		

• PC865 (Nordic) : (05)H

	0	1	2	3	4	5	6	7	8	9	A	B	C	D	E	F		
0	0	@	P	`	p	Ç	É	á	¸	µ	α	≡						
1	!	1	A	Q	a	q	ü	æ	í	¸	τ	β	±					
2	"	2	B	R	b	r	é	ø	ó	¸	π	Γ	≥					
3	#	3	C	S	c	s	â	ô	ú		¸	π	≤					
4	\$	4	D	T	d	t	ä	ö	ñ		-	Σ	∫					
5	%	5	E	U	e	u	à	ò	Ñ		+	∫	σ	∫				
6	&	6	F	V	f	v	ä	ü	¸		¸	π	μ	+				
7	'	7	G	W	g	w	ç	ù	õ	¸	π	¸	¸	τ	≈			
8	(	8	H	X	h	x	ê	ý	ç	¸	¸	¸	¸	Φ	°			
9	)	9	I	Y	i	y	è	ö	-		¸	¸	¸	θ	•			
A	*	:	J	Z	j	z	è	ü	-		¸	¸	¸	¸	Ω	•		
B	+	;	K	[	k	{	í	ø	½	¸	¸	¸	¸	δ	√			
C	,	<	L	\	l		í	£	¼	¸	¸	¸	¸	∞	°			
D	-	=	M	]	m	}	ì	ü	¸	¸	¸	¸	¸	∅	²			
E	.	>	N	^	n	~	À	¸	¸	¸	¸	¸	¸	¸	¸	¸		
F	/	?	0	_	o	¸	¸	¸	¸	¸	¸	¸	¸	¸	¸	¸		

• PC866 (Cyrillic Russian) : (011)H

	0	1	2	3	4	5	6	7	8	9	A	B	C	D	E	F			
0	0	@	P	`	p	A	P	a	¸	¸	µ	p	É						
1	!	1	A	Q	a	q	Б	С	б	¸	¸	τ	с	è					
2	"	2	B	R	b	r	В	Т	в	¸	¸	π	т	É					
3	#	3	C	S	c	s	Г	У	г		¸	¸	¸	у	é				
4	\$	4	D	T	d	t	Д	Ф	д		-	¸	¸	φ	í				
5	%	5	E	U	e	u	Е	Х	е		+	¸	¸	¸	х	ì			
6	&	6	F	V	f	v	Ж	Ц	ж		¸	¸	¸	¸	¸	ц	ý		
7	'	7	G	W	g	w	З	Ч	з	¸	¸	¸	¸	¸	¸	¸	ч	ÿ	
8	(	8	H	X	h	x	И	Ш	и	¸	¸	¸	¸	¸	¸	¸	¸	ш	°
9	)	9	I	Y	i	y	Й	Щ	й		¸	¸	¸	¸	¸	¸	¸	¸	•
A	*	:	J	Z	j	z	К	Ь	к		¸	¸	¸	¸	¸	¸	¸	¸	•
B	+	;	K	[	k	{	Л	Ы	л		¸	¸	¸	¸	¸	¸	¸	¸	√
C	,	<	L	\	l		М	Ь	м		¸	¸	¸	¸	¸	¸	¸	¸	№
D	-	=	M	]	m	}	Н	Э	н	¸	¸	¸	¸	¸	¸	¸	¸	¸	€
E	.	>	N	^	n	~	О	Ю	о		¸	¸	¸	¸	¸	¸	¸	¸	¸
F	/	?	0	_	o	¸	¸	¸	¸	¸	¸	¸	¸	¸	¸	¸	¸	¸	¸

• PC858 (Europe) : (13)H

	0	1	2	3	4	5	6	7	8	9	A	B	C	D	E	F	
0	0	@	P	`	p	Ç	É	á	¸	¸	δ	ó	-				
1	!	1	A	Q	a	q	ü	æ	í	¸	¸	¸	¸	¸	¸	¸	
2	"	2	B	R	b	r	é	ø	ó	¸	¸	¸	¸	¸	¸	¸	
3	#	3	C	S	c	s	â	ô	ú		¸	¸	¸	¸	¸	¸	
4	\$	4	D	T	d	t	ä	ö	ñ		-	È	ø	¶			
5	%	5	E	U	e	u	à	ò	Ñ		+	€	ø	§			
6	&	6	F	V	f	v	ä	ü	¸		¸	¸	¸	¸	¸	¸	
7	'	7	G	W	g	w	ç	ù	õ		¸	¸	¸	¸	¸	¸	
8	(	8	H	X	h	x	ê	ý	ç	¸	¸	¸	¸	¸	¸	¸	
9	)	9	I	Y	i	y	è	ö	¸		¸	¸	¸	¸	¸	¸	
A	*	:	J	Z	j	z	è	ü	-		¸	¸	¸	¸	¸	¸	
B	+	;	K	[	k	{	í	ø	½	¸	¸	¸	¸	¸	¸	¸	
C	,	<	L	\	l		í	£	¼	¸	¸	¸	¸	¸	¸	¸	
D	-	=	M	]	m	}	ì	ü	¸	¸	¸	¸	¸	¸	¸	¸	
E	.	>	N	^	n	~	À	¸	¸	¸	¸	¸	¸	¸	¸	¸	
F	/	?	0	_	o	¸	¸	¸	¸	¸	¸	¸	¸	¸	¸	¸	

• Katakana 2 : (FF)H

	0	1	2	3	4	5	6	7	8	9	A	B	C	D	E	F
0	0	@	P	`	p	¸	¸	¸	¸	¸	¸	¸	¸	¸	¸	¸
1	!	1	A	Q	a	q	¸	¸	¸	¸	¸	¸	¸	¸	¸	¸
2	"	2	B	R	b	r	¸	¸	¸	¸	¸	¸	¸	¸	¸	¸
3	#	3	C	S	c	s	¸	¸	¸	¸	¸	¸	¸	¸	¸	¸
4	\$	4	D	T	d	t	¸	¸	¸	¸	¸	¸	¸	¸	¸	¸
5	%	5	E	U	e	u	¸	¸	¸	¸	¸	¸	¸	¸	¸	¸
6	&	6	F	V	f	v	¸	¸	¸	¸	¸	¸	¸	¸	¸	¸
7	'	7	G	W	g	w	¸	¸	¸	¸	¸	¸	¸	¸	¸	¸
8	(	8	H	X	h	x	¸	¸	¸	¸	¸	¸	¸	¸	¸	¸
9	)	9	I	Y	i	y	¸	¸	¸	¸	¸	¸	¸	¸	¸	¸
A	*	:	J	Z	j	z	¸	¸	¸	¸	¸	¸	¸	¸	¸	¸
B	+	;	K	[	k	{	¸	¸	¸	¸	¸	¸	¸	¸	¸	¸
C	,	<	L	\	l		¸	¸	¸	¸	¸	¸	¸	¸	¸	¸
D	-	=	M	]	m	}	¸	¸	¸	¸	¸	¸	¸	¸	¸	¸
E	.	>	N	^	n	~	¸	¸	¸	¸	¸	¸	¸	¸	¸	¸
F	/	?	0	_	o	¸	¸	¸	¸	¸	¸	¸	¸	¸	¸	¸



**ELECTRONIC PRODUCTS DIVISION  
STAR MICRONICS CO., LTD.**

536 Nanatsushinya, Shimizu-ku, Shizuoka,  
424-0066 Japan  
Tel: (int+81)-54-347-0112, Fax: (int+81)-54-347-0709

Please access the following URL  
<http://www.star-m.jp/eng/dl/dl02.htm>  
for the latest revision of the manual.

**OVERSEAS SUBSIDIARY COMPANIES  
STAR MICRONICS AMERICA, INC.**

1150 King Georges Post Road, Edison, NJ 08837-3729 U.S.A.  
Tel: (int+1)-732-623-5555, Fax: (int+1)-732-623-5590

**STAR MICRONICS EUROPE LTD.**

Star House, Peregrine Business Park, Gomm Road,  
High Wycombe, Bucks, HP13 7DL, U.K.  
Tel: (int+44)-1494-471111, Fax: (int+44)-1494-473333

**STAR MICRONICS ASIA LTD.**

Rm. 1901-5, 19/F., Enterprise Square Two,  
3 Sheung Yuet Road, Kowloon Bay, Hong Kong  
Tel: (int+852)-2796-2727, Fax: (int+852)-2799-9344