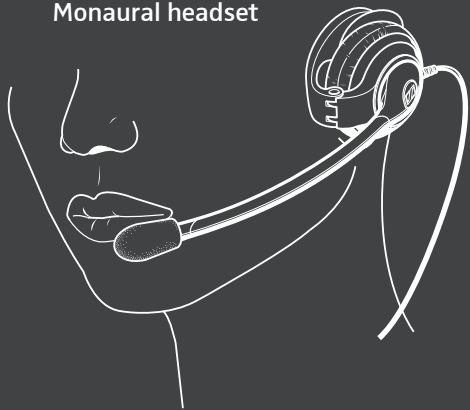


CC 530 Monaural headset



Quick Guide
Kurzanleitung
Guide rapide
Guida rapida

Instrucciones resumidas
Guía rápido
Beknopte handleiding

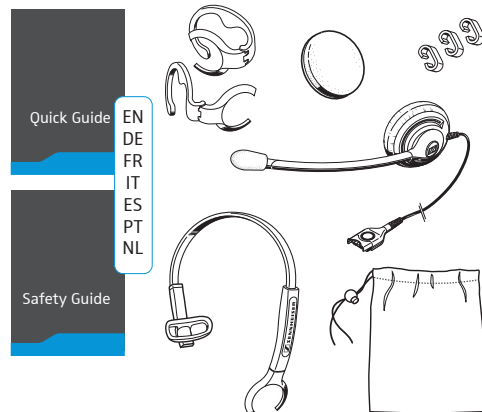


Sennheiser Communications A/S

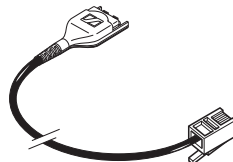
Industriparken 27, DK-2750 Ballerup, Denmark
www.sennheiser.com

Printed in China, Publ. 05/15, A01

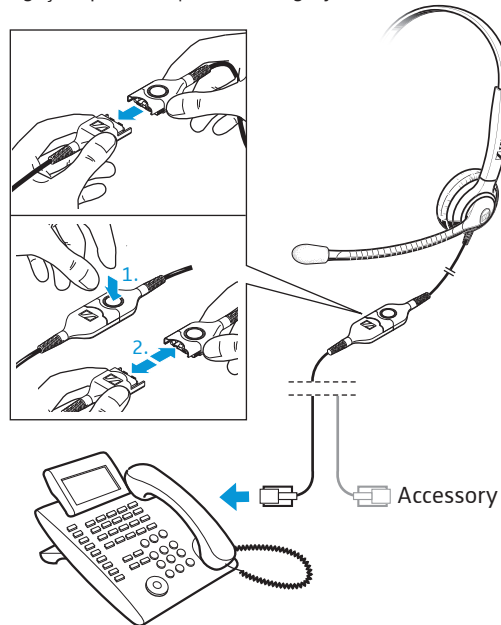
Delivery includes | Lieferumfang | Contenu | Volume di forniture | Volumen de suministro | Itens fornecidos | Leveringsomvang



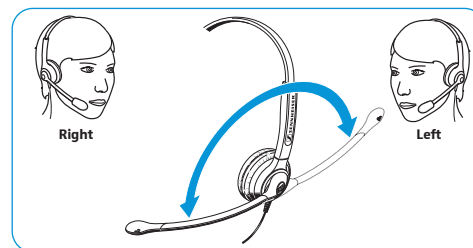
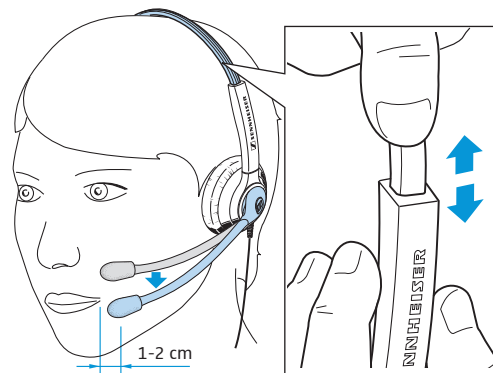
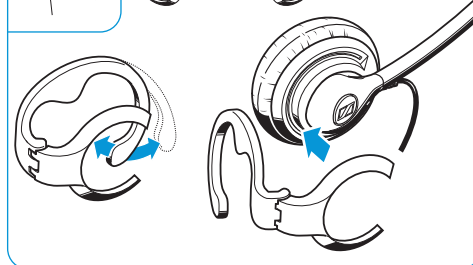
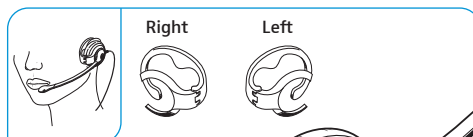
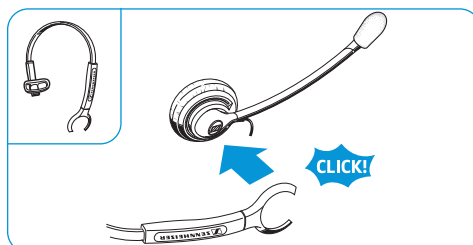
Accessories | Zubehör | Accessoires | Accessori | Accesorios | Acessórios | Toebehoren



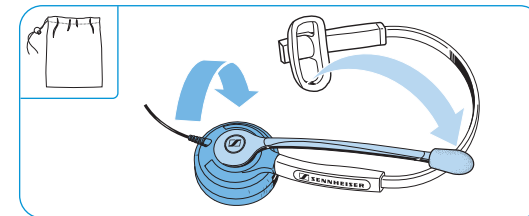
Connection possibilities | Anschlussmöglichkeiten | Possibilités de raccordement | Possibilità di collegamento | Posibilidades de conexión | Ligações possíveis | Aansluitmogelijkheden



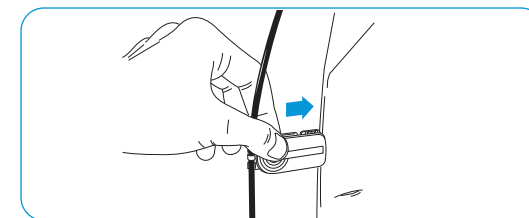
Wearing the headset | Headset aufsetzen | Mettre le casque-micro | Indossare l'headset | Ponerse los auriculares | Colocar o micro-auscultador | De headset opzetten



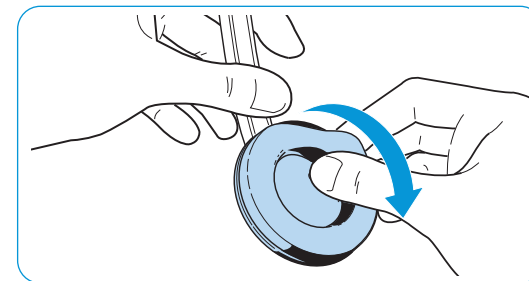
Transporting the headset | Headset transportieren | Transporter le casque-micro | Trasporto dell'headset | Transportar el headset | Transportar os micro-auscultadores | De headset transporteren



Using the cable clip | Kabel-Clip verwenden | Utiliser la pince pour câble | Utilizzo della clip per cavo | Utilizar el clip de cable | Utilizar o grampo para cabo | Kabelclip gebruiken



Replacing the ear pad | Ohrpolster austauschen | Remplacer le coussinet d'oreille | Sostituzione dei cuscinetti auricolari | Cambiar las almohadillas | Substituir as almofadas | Oorkussens vervangen

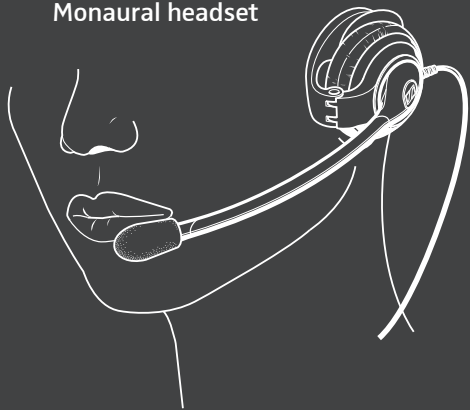


Detailed information | Ausführliche Informationen | Informations détaillées | Informazioni dettagliate | Informaciones detalladas | Informações detalhadas | Uitvoerige informatie



www.sennheiser.com/cco/support

CC 530 Monaural headset

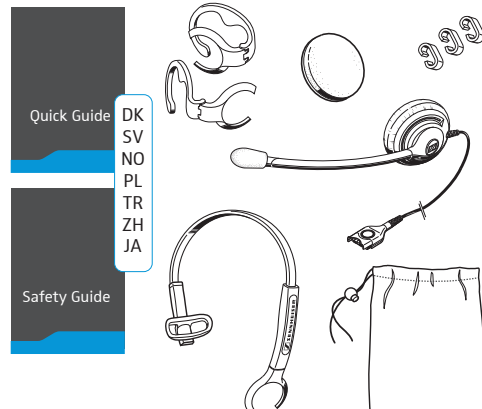


Quick Guide
Snabbguide
Quick Guide
Krótka instrukcja
obsługi

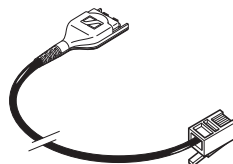
Hızlı Kılavuz
快速指南
クイックガイド



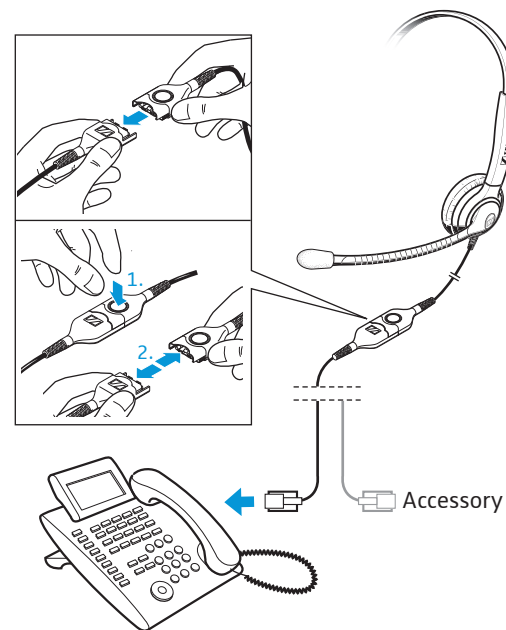
Leveringsomfang | Medfølgende delar | Leveranseomfang
Zakres dostawy | Teslimat Kapsamı | 供货范围 |
同梱されているもの



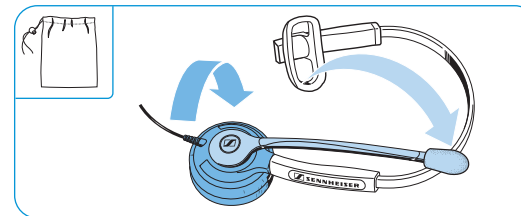
Tilbehør | Tillbehør | Tilbehør | Akcesoria | Aksesorar |
附件 | アクセサリー



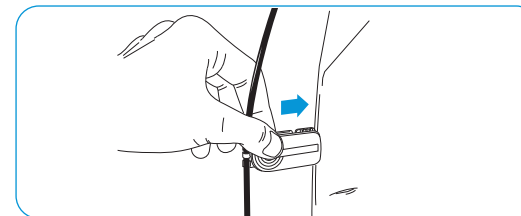
Tilslutningsmuligheder | Anslutning |
Tilkoblingsmuligheter | Možnosti podłączenia |
Bağlantı olanakları | 连接可能性 | 接続方法



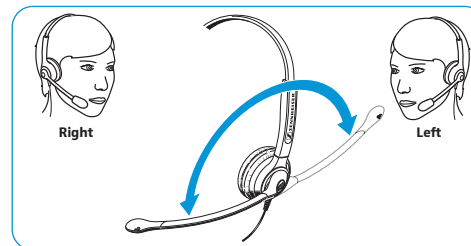
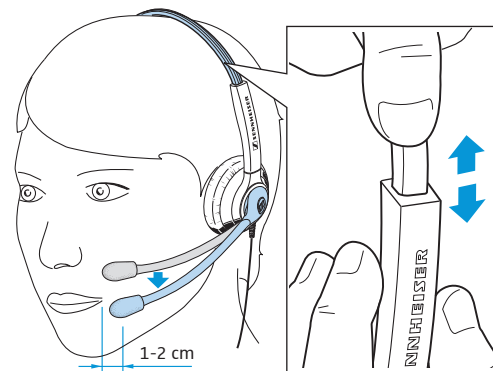
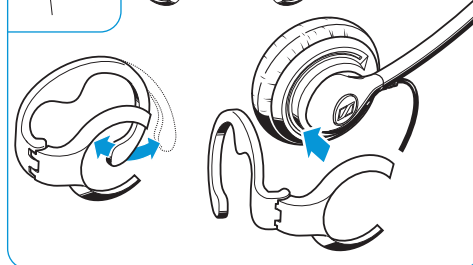
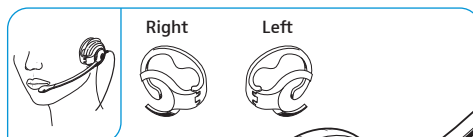
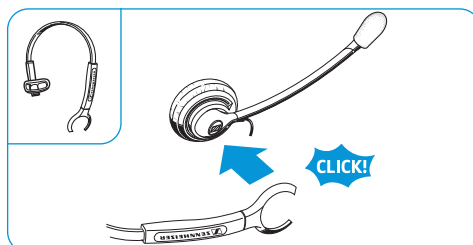
Transport af headset | Transportera headset |
Transportere hodesettet | Transport zestawu
słuchawkowego | Kulaklık setini taşıma | 携带耳机 |
ヘッドセット輸送時



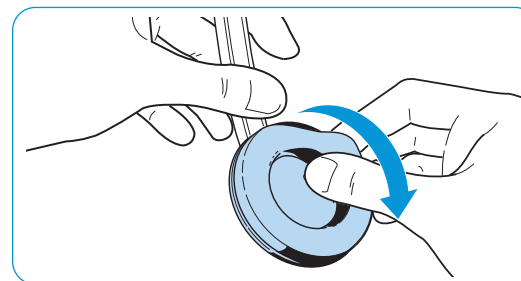
Brug af kabelklips | Använd kabelklämman |
Bruk av kabelklips | Używanie zacisku kablowego |
Kablo mandalı kullanılması | 使用耳机线夹 |
ケーブルクリップを使用する



Brug af hovedsæt | Ta på headsetet | Sette på hodesettet
Zakładanie zestawu słuchawkowego | Kulaklığın takılması
戴上耳机 | ヘッドセットを装着する



Udsiftning af ørepolstringer | Byt öronkuddar |
Utsiftning av öreputer | Wymiana poduszek
słuchawkowych | Kulak yastığının değiştirilmesi |
更换耳垫 | イヤーパッドを交換する



Udførlige | Mer information | Detaljert informasjon |
Szczegółowe informacje | Ayrıntılı bilgiler | 详细信息 |
詳細情報



www.sennheiser.com/cco/support

Sennheiser Communications A/S

Industriparken 27, DK-2750 Ballerup, Denmark
www.sennheiser.com

Printed in China, Publ. 05/15, A01