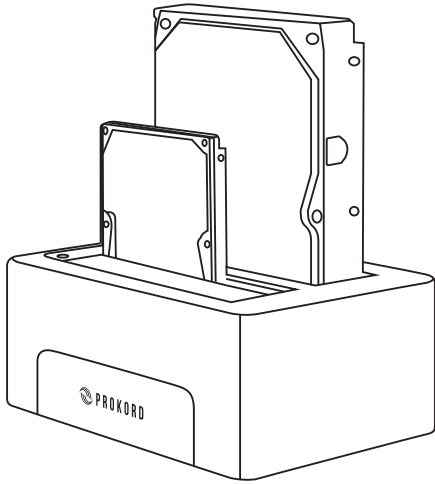


User Manual

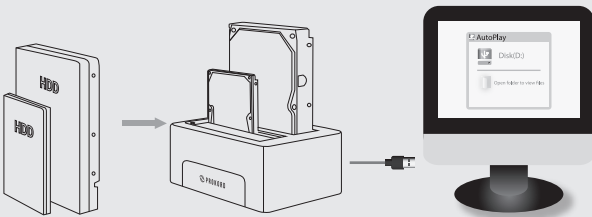


K3082 Dual bay HDD Docking Station

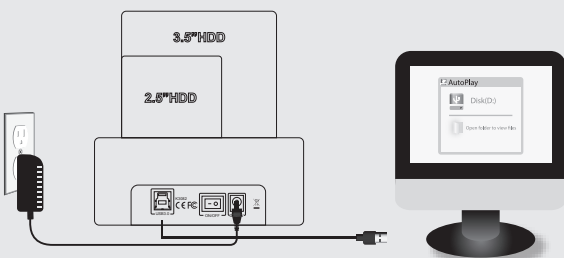
Installation

1、 Hard drive read and write :

1.1.Insert 2.5"/3.5" hard drive into the drive slot, make sure the hard drive match firmly. Connect the Docking USB to a free USB port.



1.2.Connect power adapter with Docking, and set the switch to PM mode. Turn on power switch, when connected properly, the hard drive should be automatically detected and begin "AutoPlay".



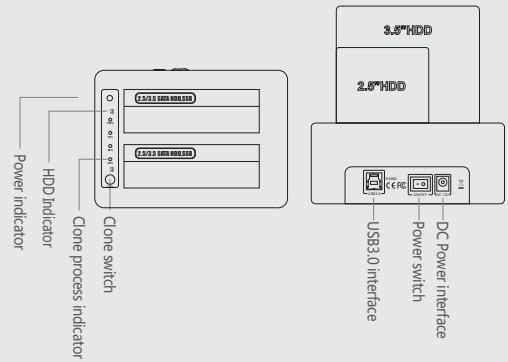
Remark: If used hard drive, you will find it from "computer" . But if you are installing a new hard drive, you must format it at the first time use.

②

Specification

Product name:

K3082 Dual bay HDD Docking Station



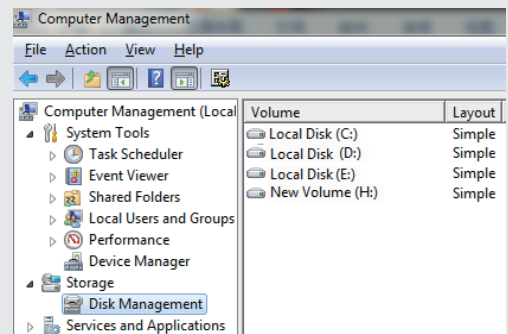
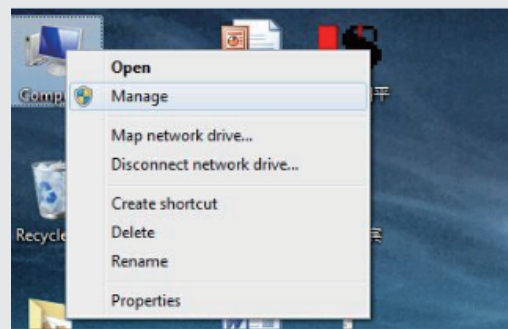
| | |
|-------------------|--|
| Product name | K3082 Dual bay HDD Docking Station |
| Product size | 152*109*62mm |
| Hard drive size | 2.5inch/3.5inch HDD or SSD |
| Power supply | External power supply |
| Product interface | USB3.0, compatible with USB2.0/1.1 |
| Function | Data read and write, 1:1 Clone no need PC |
| System | WindowsXP/7/8/10, MAC OS |
| Package contents | HDD Docking Station, User manual, USB cable, Power adapter |

①

Installation

2. New hard drive format.

2.1.View "computer - Manage - disk management" to Find the new disk .

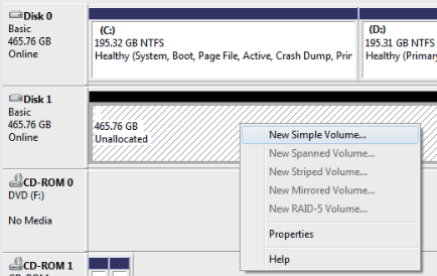


③

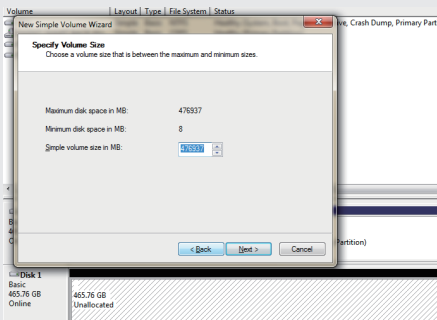
Installation

2. New hard drive format.

2.2. Right click the "Disk 1", then click "New Simple Volume".



2.3. According to the instruction, choose the size of partition, then click "Next" to finish.

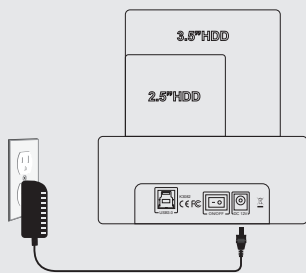


④

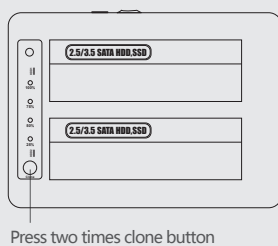
Operation Guide

3. Clone

3.2. Turn on power switch, no need connect with USB cable.



3.3. Red LED light will on, about 5-8s, press two times clone button, it begin to clone data from 1 disk to 2 disk when power LED flicker blue.

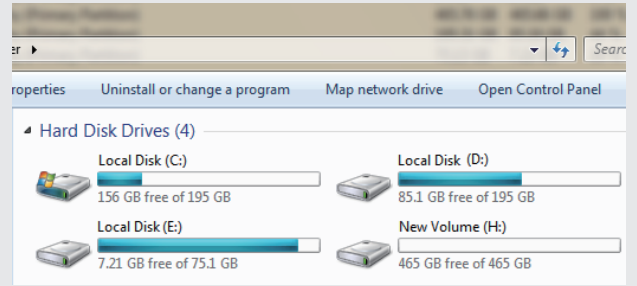


⑥

Installation

2. New hard drive format.

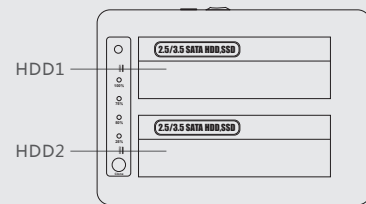
2.4. Then you can find the new hard disk in the "Computer", it's ready to be use.



Operation Guide

3. Clone

3.1. Insert 2.5" /3.5" hard drive to HDD1, and HDD2. (Attention: HDD1 must <= HDD2 or can not clone)

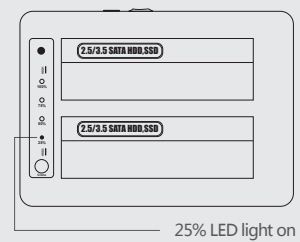


⑤

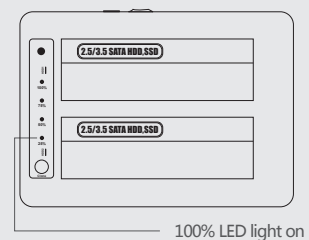
Operation Guide

3. Clone

3.4. The access LED of 25% will be blinking when it starts to clone. LED light will indicate the cloning rate from 25%, 50%, 75%, 100%.



3.5. When 4 LED all light up Blue, it finishes.



⑦