



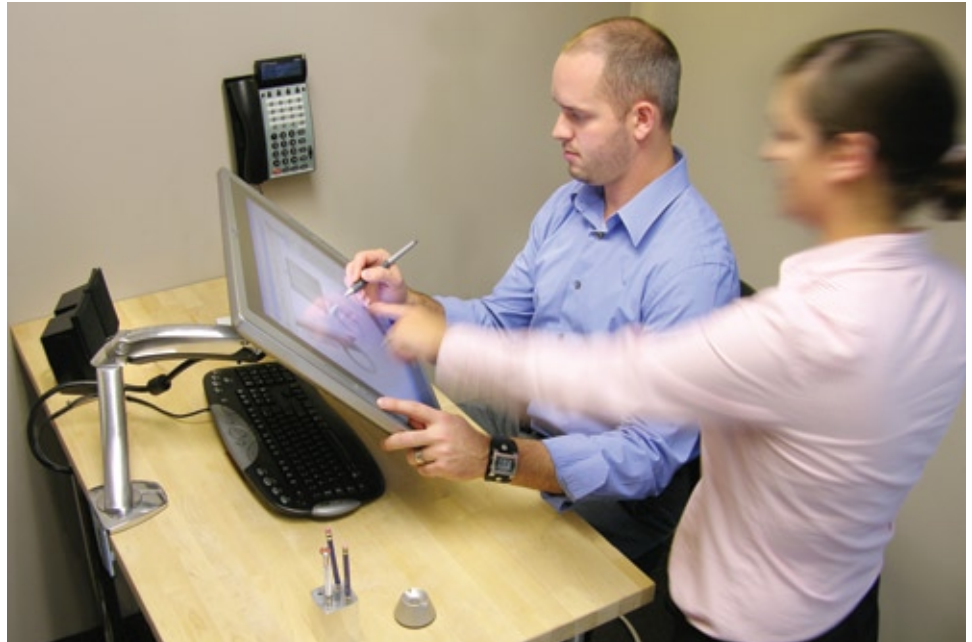
Highlights

- Accommodates mid-sized displays and all-in-one computers weighing up to 30 lbs (13.6 kg)
- Position your display for maximum ergonomic comfort to relieve eye, neck and back strain
- Cable management feature conceals and routes cables under the arm, out of the way
- Free up your table or desktop to increase your workspace
- Upgrade LCD monitors and TVs with improved ergonomic adjustment
- Pre-assembled arm offers monitor/TV theft deterrence
- Extends/retracts LCD up to 16.7" (42 cm); push your display out of the way when not in use
- Patented CF motion technology provides premium ease-of-use display adjustment.
- Easy-to-use, simple installation and effortless operation



Ergotron®

MX Desk Mount LCD Arm



Affordable elegance and adjustability for mid-sized displays

Exceptional engineering and design makes the new Ergotron MX LCD Arm the right solution for today's mid-sized desktop displays and all-in-one computers weighing up to 30 lbs (13.2 kg). Combining premium features with an attractive, polished aluminum finish, the MX Arm offers a slim profile, five inches (13 cm) of height adjustment, integrated tilt, portrait-to-landscape capability and 360° rotation—all on a convenient swivel base. Gain comfort and productivity with this stylish and affordable desk mount display.



- Patented Constant Force (CF) lift-and-pivot motion technology
- Includes desk clamp and grommet mount
- Portrait/landscape rotation includes position lock
- Mounting options: desk clamp attaches to surface edge 0–2.6" (0–66 mm) thick; grommet mount attaches through surface holes .31–2" (8–51 mm) wide and up to 3" (80 mm) thick
- Mounting standards: VESA FDMI, MIS-D, 75/100, C (hole patterns = 100 x 100 mm and 75 x 75 mm). Optional VESA Bracket Adaptor Kit can be ordered separately for MIS-E and MIS-F interfaces (hole patterns = 200 x 100 mm, 200 x 200 mm and 400 x 200 mm)
- Weight capacity: 14–30 lbs (6.3–13.6 kg)
- 16.7" (42 cm) extend/retract motion
- Cable management feature conceals and routes cables under the arm, out of the way
- Pans at base 180°; rotates at extension 360°; pans at monitor 180°
- Rotate screen for portrait viewing of photos and pages—eliminate scrolling
- Warranty: five (5) years

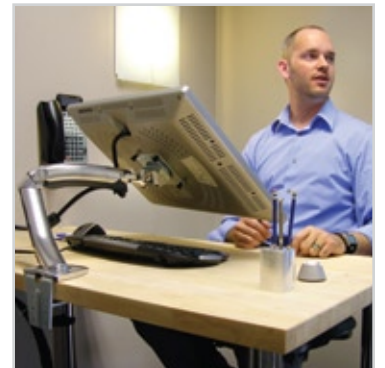


LCD Size	LCD Weight*	Lift	Tilt	Pan	Rotation**	VESA
≤ 30"	14–30 lbs 6.3–13.6 kg	5" 13 cm	80°	180°	90° w/lock	MIS-D

* Monitor depth greater than 4" (102 mm) may diminish capacity. Contact Ergotron for more information

** Portrait mode is incompatible with 30" displays

Motion range may be limited when using larger displays and/or by the position of the VESA hole pattern on the back of the display



Product Name	MX Desk Mount LCD Arm
Part Number	45-214-026 (polished aluminum)
Product Includes	MX arm, desk clamp and grommet mount
Shipping Dimensions	25.6" x 7.3" x 6.3" (650 x 185 x 160 mm) LWH
Shipping Weight	9 lbs (4.2 kg)
Warranty	5 years
Weight Capacity	14–30 lbs (6.3–13.6 kg)
Compatible Display(s)	Most VESA-compliant monitors/HDTV displays up to 30" diagonal in size

© 2008 Ergotron, Inc. rev. 10/10/2008 870-05-084-EA Content is subject to change without notification

Americas Sales and Corporate Headquarters

St. Paul, MN USA
(800) 888-8458
+1-651-681-7600
www.ergotron.com
sales@ergotron.com

EMEA Sales

Amersfoort, The Netherlands
+31 33 45 45 600
www.ergotron.com
info.eu@ergotron.com

APAC Sales

Singapore
www.ergotron.com
info.apac@ergotron.com

Worldwide OEM Sales

www.ergotron.com
info.oem@ergotron.com

