

Product Manual

# WRX560



# Table of Contents

<b>Chapter 1: Before You Start</b> .....	2
1.1 Package contents .....	2
1.2 Synology Router at a glance .....	2
1.3 LED Indicator table .....	4
1.4 Hardware specification .....	4
1.5 Safety instructions .....	5
<b>Chapter 2: Hardware Setup</b> .....	7
2.1 Position your Synology Router .....	7
2.2 Set up your Synology Router .....	7
2.3 Use wireless devices to connect to your Synology Router .....	7
2.4 Use wired devices to connect to your Synology Router .....	8
<b>Chapter 3: Set up Synology Router Manager</b> .....	9

# Chapter 1: Before You Start

Thank you for purchasing this Synology product! Before setting up your new Synology Router, please check the package contents to verify that you have received the items below. Also, make sure to read the safety instructions carefully to avoid harming yourself or damaging your Synology Router.

## Notes:

- All images below are for illustrative purposes only, and may differ from the actual product.

## 1.1 Package contents

Contact your reseller if your package is missing any of the below contents:

Main unit x 1



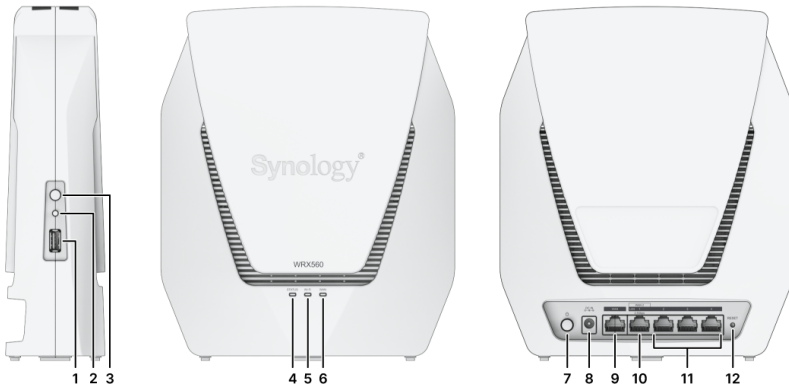
AC power adapter x 1



RJ-45 LAN cable x 1



## 1.2 Synology Router at a glance



No.	Name	Description
1	USB 3.2 Gen 1 (Type-A) Port	Connect an external drives or other USB devices here.
2	Wi-Fi Button	Press the button for 3 seconds to turn on/off the Wi-Fi network.
3	WPS Button	Press to start WPS.
4	STATUS Indicator	Displays the status of the system. For more information, see " <a href="#">LED Indicator Table</a> ".
5	Wi-Fi Indicator	Displays the status of Wi-Fi connection. For more information, see " <a href="#">LED Indicator Table</a> ".
6	WAN Indicator	Displays the status of WAN connection. For more information, see " <a href="#">LED Indicator Table</a> ".
7	Power Button	Press to power on/off the Synology Router.
8	Power Port	Connect the AC power adapter here.
9	WAN Port	Connect a network cable from the ISP modem into this port to establish WAN connection.
10	2.5G WAN/LAN Port	<ol style="list-style-type: none"> <li>1. Connect a network cable from the ISP modem into this port to establish WAN connection.</li> <li>2. Connect network cables into these ports to establish LAN connection.</li> </ol>
11	LAN Port	Connect a network cable into this port to establish LAN connection.
12	RESET Button	Press and hold for 4 seconds (Soft Reset) or for 10 seconds (Hard Reset).

## 1.3 LED Indicator table

LED Indicator	Color	Status	Description
STATUS Indicator	Green	Static	Powered on
		Blinking	System Ready
	Orange	Static	Booting up/Rebooting/Hard Reset
		Blinking	Mesh network disconnected
	Green/Orange	Blinking	Searching device
	Off		Powered off
Wi-Fi Indicator	Green	Static	Wi-Fi active
		Blinking	WPS connecting
	Off		No Wi-Fi
WAN Indicator	Green	Static	Network connected
		Blinking	Data transmitting
	Off		Network disconnected

## 1.4 Hardware specification

Item	WRX560
External Port	USB 3.2 Gen 1 (Type-A) x 1
WAN Port	<ul style="list-style-type: none"> <li>• Gigabit WAN x 1</li> <li>• Gigabit WAN x 1 and 2.5G WAN x 1 (Dual WAN)</li> </ul>
LAN Ports	<ul style="list-style-type: none"> <li>• Gigabit LAN x 3 and 2.5G LAN x 1</li> <li>• Gigabit LAN x 3 (Dual WAN)</li> </ul>
Size (H x W x D) (mm)	233 x 194 x 66
Weight (kg)	1.35
Wireless Standards	<ul style="list-style-type: none"> <li>• 2.4GHz: 802.11 b/g/n/ax</li> <li>• 5GHz: 802.11 a/n/ac/ax</li> </ul>

Operating Frequency Range	<ul style="list-style-type: none"> <li>• 802.11ax (2.4GHz): Up to 600 Mbps</li> <li>• 802.11ax (5GHz): Up to 2400 Mbps</li> </ul>
Wireless Operation Modes	<ul style="list-style-type: none"> <li>• Wireless Router</li> <li>• Wireless AP (Access Point)</li> </ul>
Wireless Security	<ul style="list-style-type: none"> <li>• WPS support</li> <li>• WPA2-Personal <ul style="list-style-type: none"> <li>• WPA/WPA2-Personal</li> <li>• WPA2-Enterprise</li> </ul> </li> <li>• WPA/WPA2-Enterprise</li> <li>• Opportunistic Wireless Encryption (OWE) <ul style="list-style-type: none"> <li>• WPA3-Personal</li> <li>• WPA3-Enterprise</li> </ul> </li> <li>• WPA2/WPA3-Personal</li> </ul>
Antennas	<ul style="list-style-type: none"> <li>• 2T2R Omni-directional high-gain dipole (2.4GHz)</li> <li>• 4T4R Omni-directional high-gain dipole (5GHz)</li> </ul>
Buttons & Switches	<ul style="list-style-type: none"> <li>• Power</li> <li>• WPS</li> <li>• Wi-Fi On/Off</li> <li>• Reset</li> </ul>
Environment Requirement	<ul style="list-style-type: none"> <li>• Line voltage: 100V to 240V AC <ul style="list-style-type: none"> <li>• Frequency: 50 / 60Hz</li> </ul> </li> <li>• Operating Temperature: 40°F to 104°F (5°C to 40°C)</li> <li>• Storage Temperature: -5°F to 140°F (-20°C to 60°C) <ul style="list-style-type: none"> <li>• Relative Humidity: 5% to 95% RH</li> </ul> </li> </ul>

**Notes:**

- Model specifications are subject to change without notice. Refer to Synology website for the latest information.

## 1.5 Safety instructions



- Keep away from direct sunlight and chemicals. Ensure a stable environment with no abrupt changes in temperature or humidity.



- Place the unit right side up at all times.



- Keep the unit away from liquids.



- Before cleaning, unplug the power cord(s) and use a damp cloth to wipe the surface. Do not use chemical aerosol cleaners.
- 



- To prevent the unit from falling over, do not place it on carts or any unstable surfaces.
- 



- The power cord(s) must be plugged into the correct power supply voltage. Ensure that the AC voltage provided is correct and stable.
- 



- Warning, electric shock hazard. To remove all electrical current from the device, ensure that all power cords are disconnected from the power source.
- 



- There is a risk of explosion if the battery is replaced with an incorrect type. Dispose of used batteries appropriately.
- 



- Power cord(s) must be plugged into a socket-outlet with earthing connection.
- 



- Keep your body parts away from a moving fan.
-

# Chapter 2: Hardware Setup

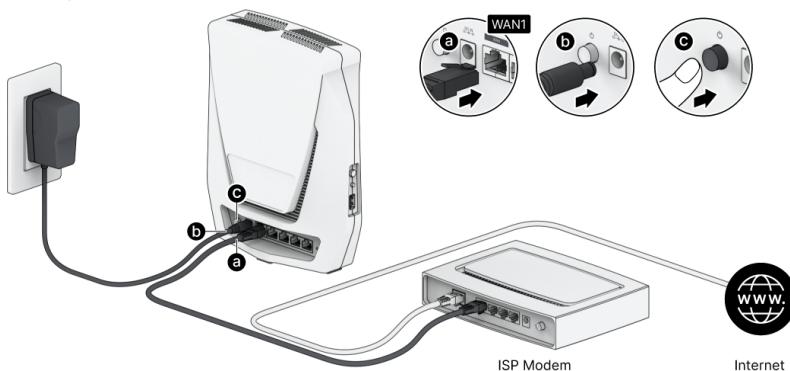
## 2.1 Position your Synology Router

For optimal performance, it is recommended to position your Synology Router as advised below:

- On a stable surface (e.g., an elevated shelf) away from any possible physical interferences.
- Close to the center of the area where the wired/wireless client devices are placed, and within a visible distance from the wireless devices.
- In a position where few walls and ceilings are between your Synology Router and its client devices.
- Away from any potential electrical signal sources, such as other Wi-Fi routers, 3G/4G bases, and microwave ovens.
- Away from large expanses of metal or other materials, such as metal doors, glass panels, and concrete.

## 2.2 Set up your Synology Router

Use the included network cable to connect your Synology Router (at the WAN1 port) to the ISP modem. Connect one end of the power adapter to the power port on your Synology Router, and the other end to the power outlet. Press the power button to power on your Synology Router. Wait for up to two minutes until the STATUS and WAN LED indicators turn green.



## 2.3 Use wireless devices to connect to your Synology Router

When the Wi-Fi indicator has turned static green, Synology Router is ready to connect with other devices. Use your wireless device to scan and join the Wi-Fi network created by your Synology Router.

- From mobile device:



1. Scan the QR Code to download DS router.
2. Use the default credentials to connect to the Wi-Fi network. Then follow the wizard to set up Synology Router Manager (SRM).



- From laptop:
  1. Use the default credentials to connect to the Wi-Fi network.
  2. Set up Synology Router Manager (SRM) by following the steps in "[Set up Synology Router Manager](#)".

#### Notes:

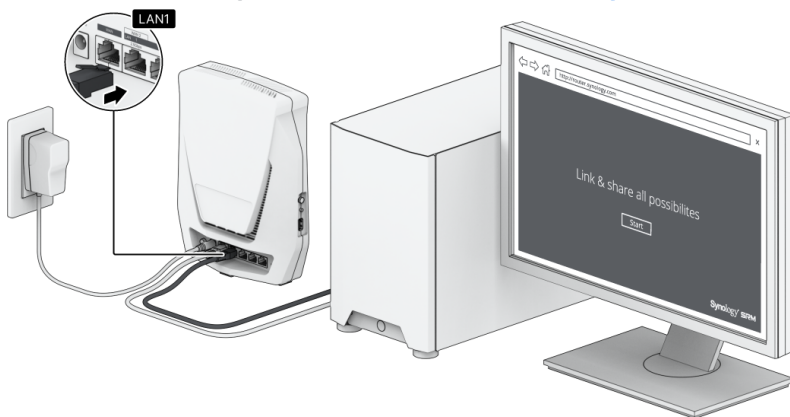
The default credentials for the Wi-Fi network:

- Wi-Fi SSID: **Synology\_(Serial)**  
**Serial** is the last 6 digits of your Synology Router's serial number.
- Password: **synology**

You must change the password during the initial SRM setup.

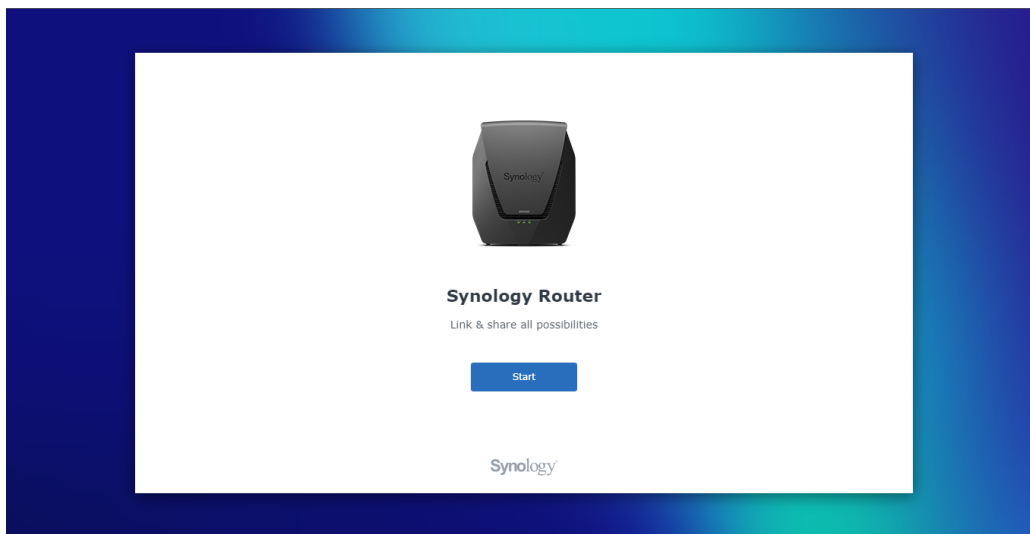
## 2.4 Use wired devices to connect to your Synology Router

Use network cables to connect devices to the LAN ports. Then set up Synology Router Manager (SRM) by following the steps in "[Set up Synology Router Manager](#)".

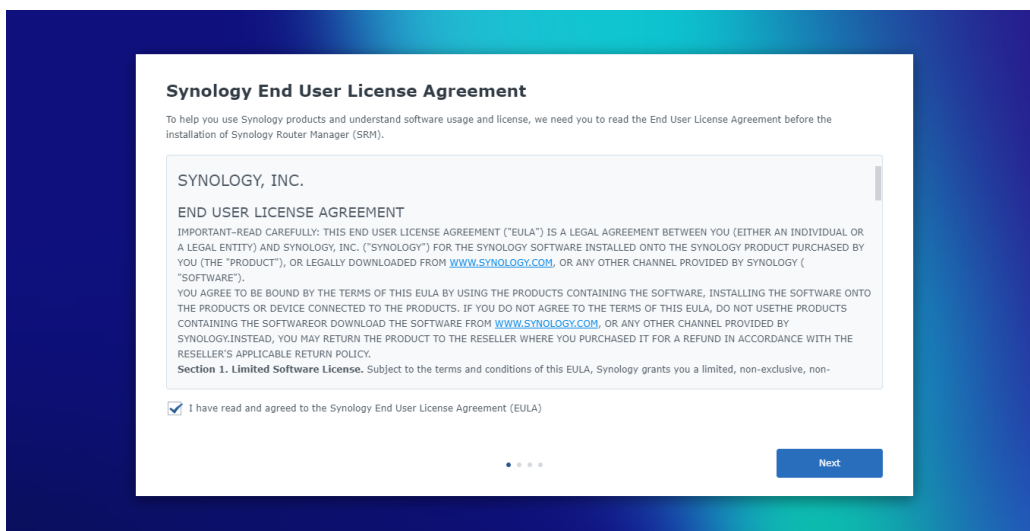


# Chapter 3: Set up Synology Router Manager

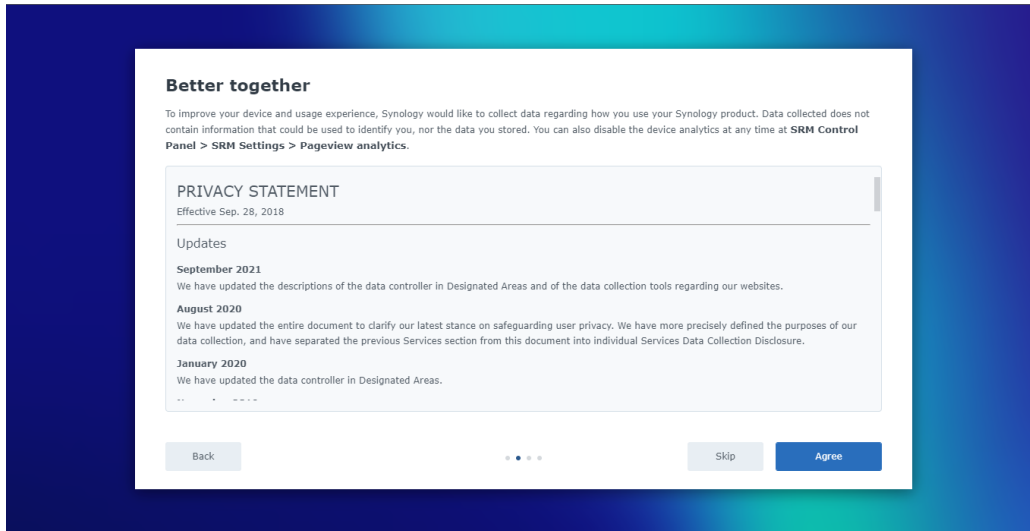
1. Open a web browser, and enter either URL into the address bar:
  - <http://router.synology.com>
  - <http://192.168.1.1:8000>
2. Once connected, click **Start** to launch the SRM Setup Wizard.



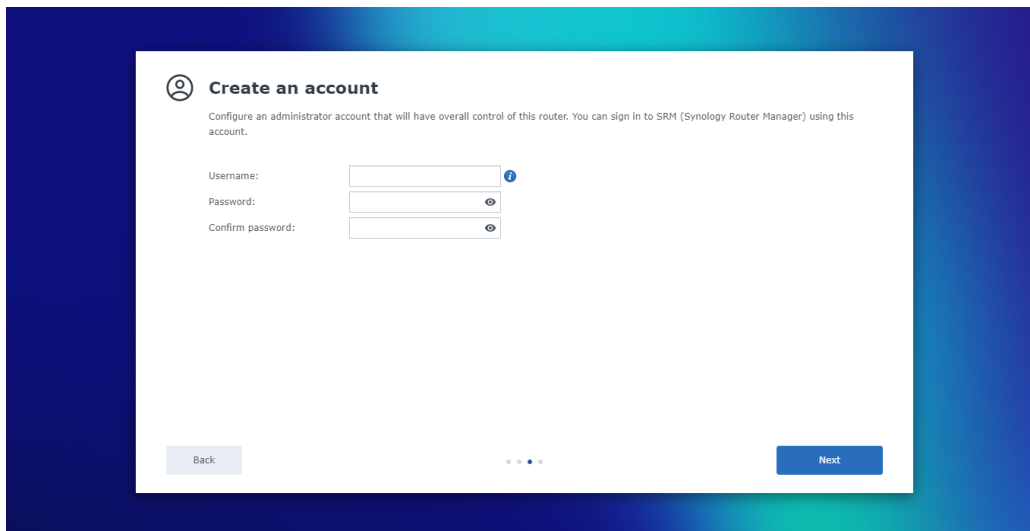
3. Read through and tick the checkbox to confirm that you agree to the Synology End User License Agreement. Click **Next** to continue.



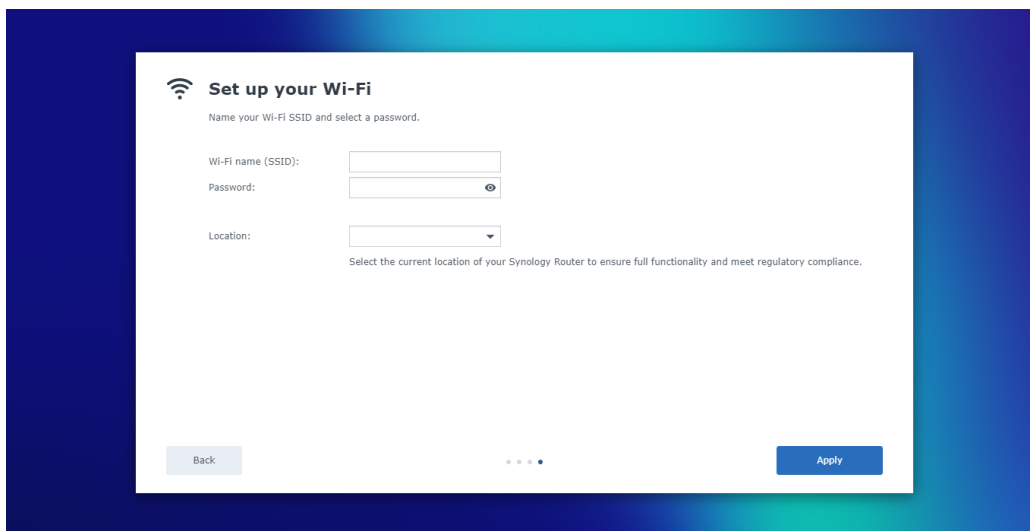
4. Read through the Privacy Statement. Click **Skip** or **Agree** to continue.



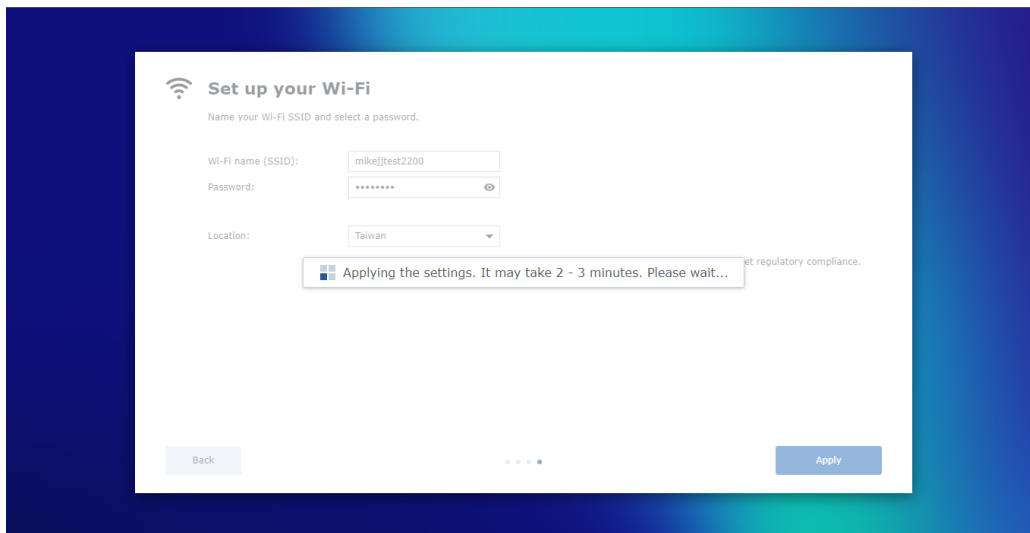
5. Fill in the information to set up the administrator account. Click **Next** to continue.



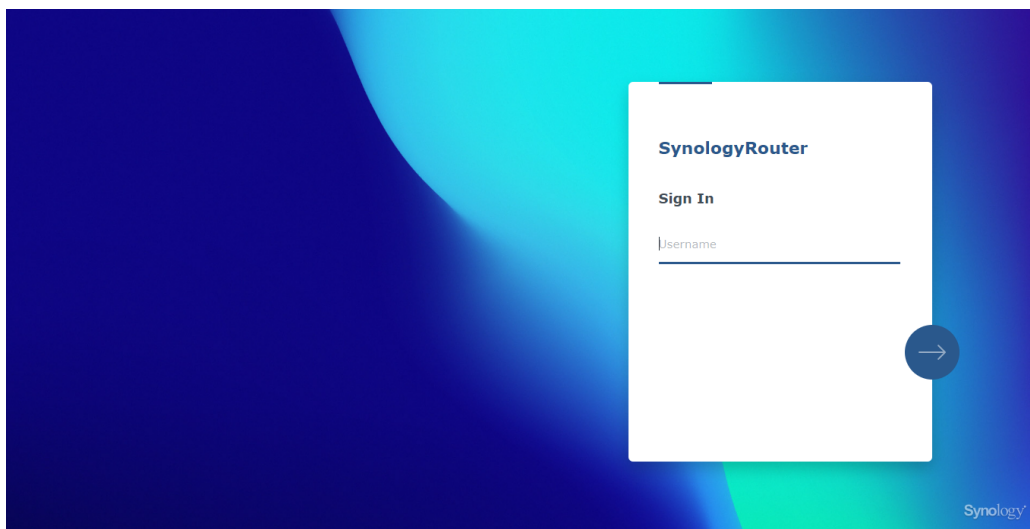
6. Fill in the information to set up a Wi-Fi network. Click **Apply** to continue.



7. The wizard will continue to set up your Synology Router, and it may take up to three minutes to complete the setup.



8. After the setup is complete, you can now sign in to SRM with the administrator account.



### Notes:

- Above is a general demonstration of the SRM setup steps. The steps and available options may somewhat vary depending on your device type (PC or wireless device), access type (LAN, WAN, or Wireless LAN), and chosen operation mode (Wireless Router or Wireless AP).
- You can download DS router on your mobile device to manage your Synology Router from anywhere.

## **Federal Communication Commission Interference Statement**

This device complies with Part 15 of the FCC Rules. Operation is subject to the following two conditions: (1) This device may not cause harmful interference, and (2) this device must accept any interference received, including interference that may cause undesired operation.

This equipment has been tested and found to comply with the limits for a Class B digital device, pursuant to Part 15 of the FCC Rules. These limits are designed to provide reasonable protection against harmful interference in a residential installation. This equipment generates, uses and can radiate radio frequency energy and, if not installed and used in accordance with the instructions, may cause harmful interference to radio communications. However, there is no guarantee that interference will not occur in a particular installation. If this equipment does cause harmful interference to radio or television reception, which can be determined by turning the equipment off and on, the user is encouraged to try to correct the interference by one of the following measures:

- Reorient or relocate the receiving antenna.
- Increase the separation between the equipment and receiver.
- Connect the equipment into an outlet on a circuit different from that to which the receiver is connected.
- Consult the dealer or an experienced radio/TV technician for help.

FCC Caution: Any changes or modifications not expressly approved by the party responsible for compliance could void the user's authority to operate this equipment.

This transmitter must not be co-located or operating in conjunction with any other antenna or transmitter.

Operations in the 5.15-5.25GHz band are restricted to indoor usage only.

This device meets all the other requirements specified in Part 15E, Section 15.407 of the FCC Rules.

### **Radiation Exposure Statement:**

This equipment complies with FCC radiation exposure limits set forth for an uncontrolled environment. This equipment should be installed and operated with minimum distance 20cm between the radiator & your body.

Note: The country code selection is for non-US model only and is not available to all US model. Per FCC regulation, all WiFi product marketed in US must fixed to US operation channels only.

FCC regulations restrict the operation of this device to indoor use only.

Synology America Headquarters  
3535 Factoria Blvd SE, Suite #200, Bellevue, WA 98006, USA  
Tel: +1 425 818 1587

### **Industry Canada statement:**

This device complies with ISED's licence-exempt RSSs. Operation is subject to the following two conditions: (1) This device may not cause harmful interference, and (2) this device must accept any interference received, including interference that may cause undesired operation.

Le présent appareil est conforme aux CNR d'ISED applicables aux appareils radio exempts de licence. L'exploitation est autorisée aux deux conditions suivantes : (1) le dispositif ne doit pas produire de brouillage préjudiciable, et (2) ce dispositif doit accepter tout brouillage reçu, y compris un brouillage susceptible de provoquer un fonctionnement indésirable.

#### **Caution :**

(i) the device for operation in the band 5150-5250 MHz is only for indoor use to reduce the potential for harmful interference to co-channel mobile satellite systems;

(ii) where applicable, antenna type(s), antenna models(s), and worst-case tilt angle(s) necessary to remain compliant with the e.i.r.p. elevation mask requirement set forth in section 6.2.2.3 shall be clearly indicated.

#### **Avertissement:**

Le guide d'utilisation des dispositifs pour réseaux locaux doit inclure des instructions précises sur les restrictions susmentionnées, notamment :

(i) les dispositifs fonctionnant dans la bande 5150-5250 MHz sont réservés uniquement pour une utilisation à l'intérieur afin de réduire les risques de brouillage préjudiciable aux systèmes de satellites mobiles utilisant les mêmes canaux;

(ii) lorsqu'il y a lieu, les types d'antennes (s'il y en a plusieurs), les numéros de modèle de l'antenne et les pires angles d'inclinaison nécessaires pour rester conforme à l'exigence de la p.i.r.e. applicable au masque d'élévation, énoncée à la section 6.2.2.3, doivent être clairement indiqués

#### **Radiation Exposure Statement:**

This equipment complies with ISED radiation exposure limits set forth for an uncontrolled environment. This equipment should be installed and operated with greater than 20cm between the radiator & your body.

#### **Déclaration d'exposition aux radiations:**

Cet équipement est conforme aux limites d'exposition aux rayonnements ISED établies pour un environnement non contrôlé. Cet équipement doit être installé et utilisé à plus de 20 cm entre le radiateur et votre corps.

取得審驗證明之低功率射頻器材，非經核准，公司、商號或使用者均不得擅自變更頻率、加大功率或變更原設計之特性及功能。

低功率射頻器材之使用不得影響飛航安全及干擾合法通信；經發現有干擾現象時，應立即停用，並改善至無干擾時方得繼續使用。前述合法通信，指依電信管理法規定作業之無線電通信。低功率射頻器材須忍受合法通信或工業、科學及醫療用電波輻射性電機設備之干擾。

應避免影響附近雷達系統之操作。

設備名稱：802.11ax 無線路由器，型號（型式）：WRX560 Equipment name		Type designation (Type)				
單元 Unit	限用物質及其化學符號 Restricted substances and its chemical symbols					
	鉛Lead (Pb)	汞 Mercury (Hg)	鎘 Cadmium (Cd)	六價鉻 Hexavalent chromium (Cr <sup>+6</sup> )	多溴聯苯 Polybrominated biphenyls (PBB)	多溴二苯醚 Polybrominated diphenyl ethers (PBDE)
前後蓋	○	○	○	○	○	○
印刷電路板及電子組件	—	○	○	○	○	○
天線	○	○	○	○	○	○
電纜線(Cable)	○	○	○	○	○	○
備考1. “超出0.1 wt %”及“超出0.01 wt %”係指限用物質之百分比含量超出百分比含量基準值。 Note 1: “Exceeding 0.1 wt %” and “exceeding 0.01 wt %” indicate that the percentage content of the restricted substance exceeds the reference percentage value of presence condition.						
備考2. “○”係指該項限用物質之百分比含量未超出百分比含量基準值。 Note 2: “○” indicates that the percentage content of the restricted substance does not exceed the percentage of reference value of presence.						
備考3. “—”係指該項限用物質為排除項目。 Note 3: The “—” indicates that the restricted substance corresponds to the exemption.						

## RED Compliance Statement

### Compliance with 2014/53/EU Radio Equipment Directive (RED)

In accordance with Article 10.8(a) and 10.8(b) of the RED, the following table provides information on the frequency bands used and the maximum RF transmit power of the product for sale in the EU:

Frequency Range (MHz)	Max. Transmit Power (dBm) EIRP
2412 ~ 2472	19.93 dBm
5180 ~ 5320	22.87 dBm
5500 ~ 5700	29.83 dBm

This equipment should be installed and operated with minimum distance 20cm between the radiator & your body.

	AT	BE	BG	HR	CY	CZ	DK	
	EE	FI	FR	DE	EL	HU	IE	
	IT	LV	LT	LU	MT	NL	PL	
	PT	RO	SK	SI	ES	SE	UK	UK(NI)

This device is restricted to indoor use

報驗義務人：群暉科技股份有限公司  
新北市板橋區遠東路1號9樓