








Reference and Support
Référence et assistance
Referencia y soporte

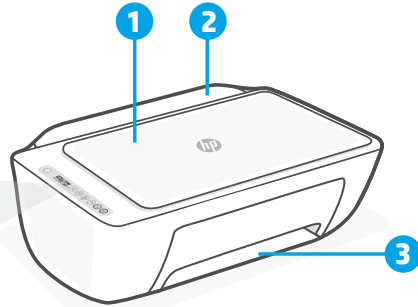


HP DeskJet 2700
All-in-One series

Printer Features

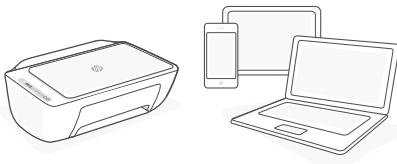
Control Panel

-  Cancel
-  Resume
-  Information
-  Wi-Fi
-  Color Copy
-  Black and White Copy
-  Ink levels






- 1 Scanner
- 2 Input tray
- 3 Output tray

Print/Scan

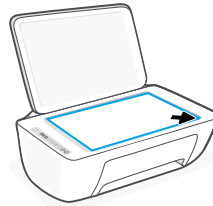


Print from or scan to any iOS, Android, Windows, or Mac device. Visit 123.hp.com from your device to get started.

Trouble with Wi-Fi setup?

If the app or software is unable to find your printer, restart setup mode. Press  and  together for 3 seconds. When the Wireless light  blinks blue, continue setup.

Copy



1. Load Original

Place face down on scanner glass.

2. Start Copy

Press **Copy** (Black  or Color ).

Note: To increase number of copies, press multiple times.



Help and Support

For troubleshooting, videos, and other product information, visit the product support site.

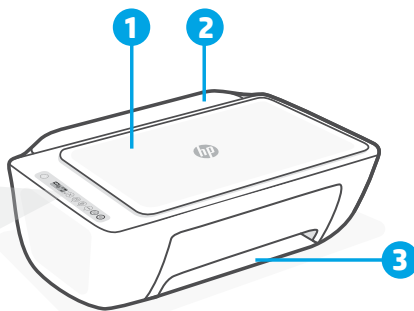


hp.com/support/dj2700

Caractéristiques de l'imprimante

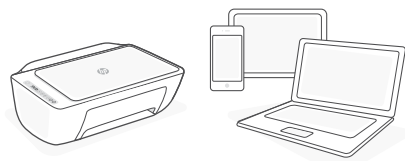
Panneau de commande

-  Annuler
-  Reprendre
-  Informations
-  Wi-Fi
-  Copie Couleur
-  Copie noir et blanc
-  Niveaux d'encre






- 1 Scanner
- 2 Bac d'alimentation
- 3 Bac de sortie

Imprimer/Numériser

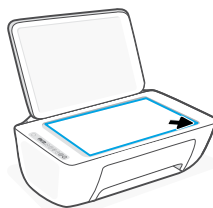


Imprimez depuis ou numérisez vers n'importe quel périphérique iOS, Android, Windows ou Mac. Rendez-vous sur **123.hp.com** depuis votre périphérique pour commencer.

Des problèmes avec la configuration Wi-Fi ?

Si l'application ou le logiciel ne parvient pas à trouver votre imprimante, redémarrez le mode de configuration. Appuyez simultanément sur  et  pendant 3 secondes. Lorsque le voyant sans fil  clignote en bleu, poursuivez la configuration.

Copier



1. Chargement d'un original

Placez la face vers le bas sur la vitre du scanner.

2. Démarrage d'une copie

Appuyez sur **Copie** (Noir  ou Couleur .

Remarque : Pour augmenter le nombre de copies, appuyez sur le bouton à plusieurs reprises.



Centre d'aide et de support






Pour le dépannage, les vidéos et autres informations sur le produit, visitez le site d'assistance du produit.

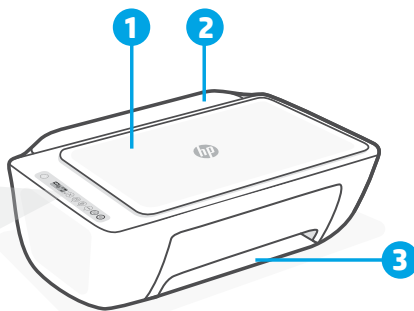


hp.com/support/dj2700

Funciones de la impresora

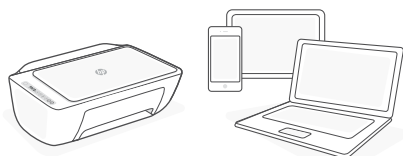
Panel de control

-  Cancelar
-  Reanudar
-  Información
-  Wi-Fi
-  Copia en color
-  Copia en blanco y negro
-  Niveles de tinta



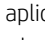

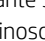
- 1 Escáner
- 2 Bandeja de entrada
- 3 Bandeja de salida

Imprimir/escanear

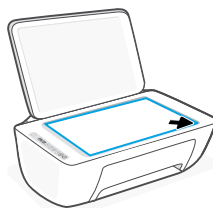


Imprima desde, o escanee a, cualquier dispositivo iOS, Android, Windows o Mac. Visite **123.hp.com** desde su dispositivo para empezar.

¿Problemas con la configuración Wi-Fi?

Si la aplicación o el software no consiguen encontrar su impresora, reinicie el modo de configuración. Pulse  y  simultáneamente durante 3 segundos. Cuando el indicador luminoso de Conexión inalámbrica  parpadee en azul, continúe con la configuración.

Copiar



1. Cargar un original

Colóquelo boca abajo sobre el cristal del escáner.

2. Iniciar la copia

Pulse **Copiar** (Negro  o Color .

Nota: para aumentar el número de copias, pulse varias veces.



Ayuda y soporte

Para obtener recursos de solución de problemas, videos e información adicional, visite el sitio web de soporte del producto.



hp.com/support/dj2700



Printed in China Imprimé en Chine Impreso en China

© Copyright 2020 HP Development Company, L.P.

EN FR ES



3XV17-90032