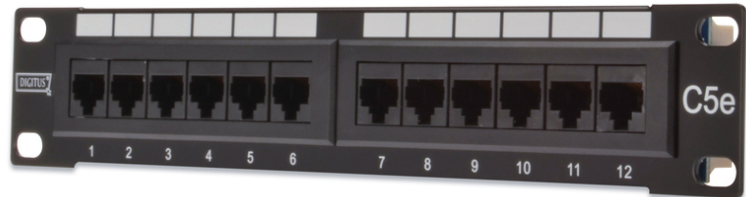


DIGITUS CAT 5e, Class D Patch Panel, unshielded

DN-91512U
EAN 4016032241447



CAT 5e patch panel, unshielded, 12-Port RJ45 8P8C, LSA, 1U, 254 mm(10"), bl, 482x44x109 mm

The CAT 5e Patch Panels for 254 mm (10") rack mount from DIGITUS® are tested and according to ISO/IEC 11801 and EN 50173. Cable installation takes place via LSA strips which are color coded acc. EIA/TIA 568B. The housing consists of galvanized, cold-rolled steel, acc. EN1.4301, UNS S30400, AISI 304 and LMSAD110.

Future-oriented standards and high-end quality for your network.

- Transmission properties: Category 5e
- Area of application: Up to 100 MHz, 10/100Base-T, 1GBase-T
- Norms: ISO/IEC 11801 3rd Ed., EN 50173-1, EIA/TIA 568-C
- General properties:
- Suitable for 254 mm (10") cabinet mounting
- RJ45 female, 8P8C
- Cable installation via LSA strips, color coded according to EIA/TIA 568 A & B
- Cable fixing with smart cable ties
- Mechanical properties:
- Housing material: 1.5 mm galvanic cold rolled steel, acc. to EN1.4301, UNS S30400, AISI 304 and LMSAD110
- RJ45 female material: ABS UL 94V-0
- RJ45 female contact: Tinned phosphor bronze, 0.5 µ gold-plated contact

- LSA termination clamp: Krone LSA+, UL 94V-2, zinc plated phosphor bronze
- Ground wire: Not included
- Conductor plate: FR4, UL 94V-0
- Physical properties:
- Insertion force: 30N max. (IEC 60603-7-5)
- Retention strength: 7.7 kg between jack and plug
- Operation temperature: -20° C to +70 °C (ISO/IEC 11801, EN 50173-1, ANSI/TIA/EIA 568 C)
- Mating cycles female: > 750 acc. to ISO/IEC 11801, IEC 60603-7-5
- Clamp: > 200 acc. to ISO/IEC 11801, IEC 60603-7-5
- IDC wire size: 22 – 26 AWG solid and stranded conductor
- Insulation resistance: > 500 MOhm
- Contact resistance: < 20 MilliOhm
- Dielectric strength: 1000 VDC (Contact/Contact), 1500 VDC (Contact/Ground)
- Insulation resistance: > 500 MOhm
- Contact resistance: < 20 MilliOhm
- Dielectric strength: 1000 VDC (Contact/Contact), 1500 VDC (Contact/Ground)
- Color: Black (RAL 9005)
- Color: black, RAL 9005
- Units: 1
- Category: CAT 5e
- Category: CAT 5e
- Ports: 12

Logistics						
	Number (pcs)	Weight (kg)	Depth (cm)	Width (cm)	Height (cm)	cm³
Packaging Unit Carton	20	7.18	60.50	22.00	30.50	40,595.50
Packaging Unit Inside	1	0.36	28.20	6.70	4.80	906.91
Packaging Unit Single	1	0.36	28.20	6.70	4.80	906.91
Net single without Packaging	1	0.29	28.20	6.70	4.80	906.91

More images:

