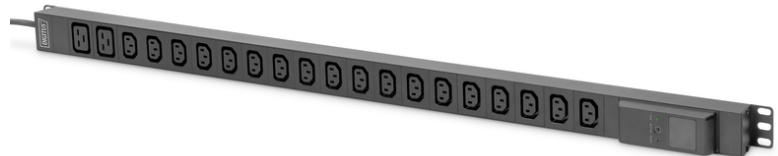


# DIGITUS Local monitored PDU, 1-phase, 18 x C13, 2 x C19

DN-95622  
 EAN 4016032473404



**Local monitored PDU, vertical, 250V, 16A, 18x C13, 2x C19 16A ammeter, 16A DIN49441 plug, 3m cable**

**Safe and professional power distribution solution with local measurement for high load requirements in network and server cabinets**

- Outlets: 18 x C13 outlet, 2 x C19 outlet
- Mains cable: 3 x 1.5 mm<sup>2</sup>, DIN 49441 16 A plug
- Cable: 3 m
- Max. load: 4,000 W / 250 V AC / 16 A (50/60Hz)
- Display: LCD
- Protective element Amp meter 16 A
- Installation: Vertical, two angle profiles for cabinet installation
- Dimensions (LxWxD): 983 x 44.4 x 44.4 mm
- Installation length: 962 mm
- Housing length: 930 mm

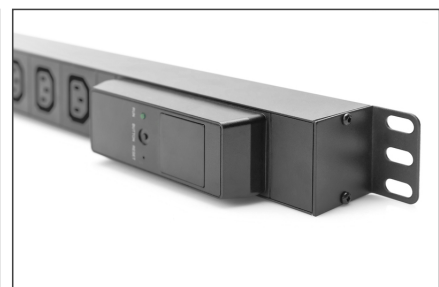
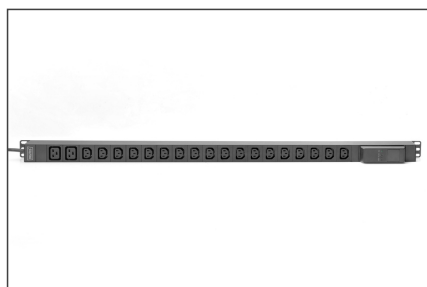
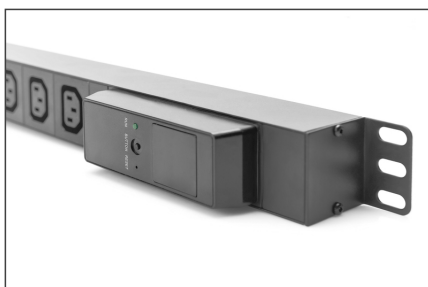
- Temperature ranges (operation / storage): -5 °C to +45 °C / -40 °C to +70 °C
- Humidity ranges (operation / storage): 5% - 95% RH / 5% - 95% RH (non-condensing)
- Maximum height above sea level (operation / storage): 0 - 3,000 m / 0 - 15,000 m
- Color: Black
- Protection type: IP44
- Mounting material: 2 pcs. 6x16 mm cross-headed screw, 2 pcs. M6 nut

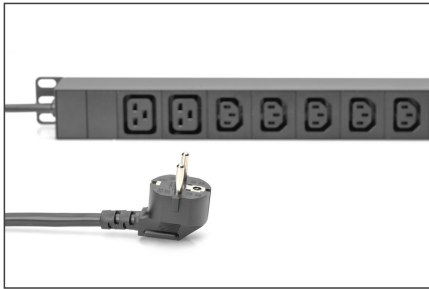
**Package contents**

- 1 x PDU with local energy measurement, 1-phase, 18 x C13, 2 x C19, 3 m cable DIN 49441 16 A plug
- 1 x Fastening material

Logistics						
	Number (pcs)	Weight (kg)	Depth (cm)	Width (cm)	Height (cm)	cm <sup>3</sup>
Packaging Unit Carton	10	21.00	25.50	110.00	44.50	124,822.00
Packaging Unit Inside	1	2.10	0.00	0.00	0.00	0.00
Packaging Unit Single	1	2.10	11.50	108.00	8.50	10,557.00
Net single without Packaging	1	1.80	11.50	108.00	8.50	10,557.00

**More images:**





Local Monitored PDU,  
1-Phase, 16 A, 18 x C13, 2 x C19

