

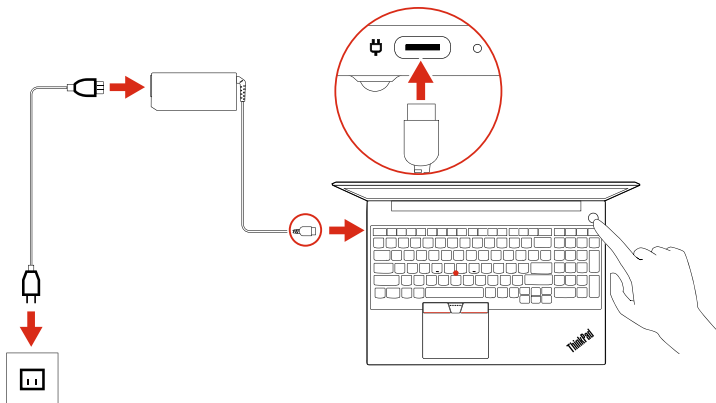
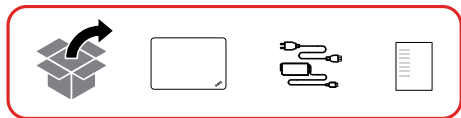
**ThinkPad** E15

# Setup Guide

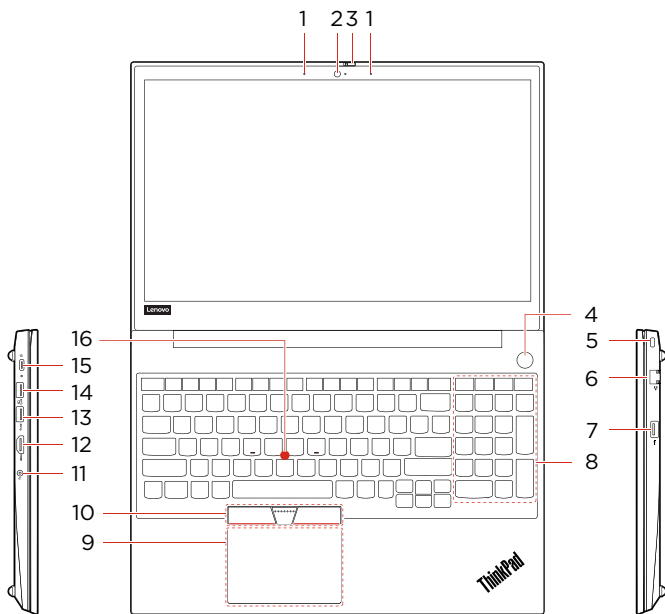
**Lenovo**

# Initial Setup

---



# Overview



- |                                      |                                       |
|--------------------------------------|---------------------------------------|
| 1. Microphones                       | 10. TrackPoint® buttons               |
| 2. Camera                            | 11. Audio connector                   |
| * 3. ThinkShutter                    | 12. HDMI™ connector                   |
| * 4. Power button/Fingerprint reader | 13. USB 3.1 connector Gen 1           |
| 5. Security-lock slot                | 14. Always On USB 3.1 connector Gen 1 |
| 6. Ethernet connector                | 15. USB-C™ connector                  |
| 7. USB 2.0 connector                 | 16. TrackPoint pointing stick         |
| 8. Numeric keypad                    |                                       |
| 9. Trackpad                          |                                       |

\* For selected models

**i** Read the statement on USB transfer rate in the *User Guide*. Refer to the *Safety and Warranty Guide* for accessing the *User Guide*.

# Additional information

## Specific absorption rate for European Union

YOUR DEVICE MEETS INTERNATIONAL GUIDELINES FOR EXPOSURE TO RADIO WAVES.

The Europe 10g Specific Absorption Rate (SAR) limit for mobile devices is 2.0 W/kg. To view your product specific SAR value, go to <https://support.lenovo.com/us/en/solutions/sar>.

If you are interested in further reducing your RF exposure then you can easily do so by limiting your usage or simply keeping the device away from the body.

## European Union – compliance with the Radio Equipment Directive

Hereby, Lenovo (Singapore) Pte. Ltd., declares that the radio equipment type ThinkPad E15 is in compliance with Directive 2014/53/EU.

The full text of the system EU declaration of conformity is available at the following Internet address:

<https://www.lenovo.com/us/en/compliance/eu-doc>

This radio equipment operates with the following frequency bands and maximum radio-frequency power:

Technology	Frequency band [MHz]	Maximum transmit power
WLAN 802.11b/g/n/ax	2400 - 2483.5	< 20 dBm
WLAN 802.11a/n/ac/ax	5150 - 5725	< 23 dBm
WLAN 802.11a/n/ac/ax	5725 - 5875	< 13.98 dBm
Bluetooth BR/EDR/LE	2400 - 2483.5	< 20 dBm



---

**First Edition (September 2019)**

**© Copyright Lenovo 2019.**

LIMITED AND RESTRICTED RIGHTS NOTICE: If data or software is delivered pursuant to a General Services Administration "GSA" contract, use, reproduction, or disclosure is subject to restrictions set forth in Contract No. GS-35F-05925.

**Reduce | Reuse | Recycle**



For Barcode Position Only

Printed in China