

MOTODEFY™+

LIFE.  POWERED.

## WELCOME

Because life is full of challenges, we've designed a phone that handles everything life throws your way.

- **Lifeproof.** Water resistant, dustproof and a scratch-resistant screen.
- **Faster web browsing and more entertainment.** 25% faster 1 GHz processor than MOTOROLA DEFY™. Enjoy more entertainment by streaming your favourite movies and videos from the web.



## YOUR PHONE

Most of what you need is on the touchscreen and four simple keys on the front:

- **Menu:** Open menu options.
  - **Home:** Go to the home screen.
  - **Back:** Go back a screen.
  - **Search:** Touch for text search, hold for voice search.
- Note:** Certain apps and features may not be available in all countries.

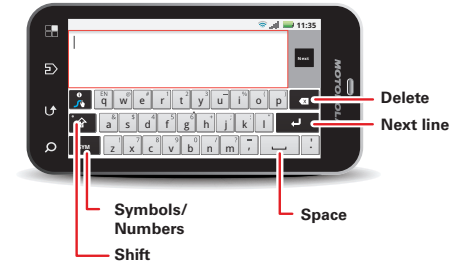


Use the **touchscreen keypad** for texting, emailing or searching.

To open the display keypad, touch a text field. To close the keypad, touch Back (⏪).

**Tip:** To lock the screen/phone, press the Power key (⏻). To unlock, press the Power key (⏻), then drag (🔒) right.

**Note:** Your touchscreen might stay dark if the sensor just above it is covered. Don't use covers or screen protectors (even clear ones) that cover this sensor.

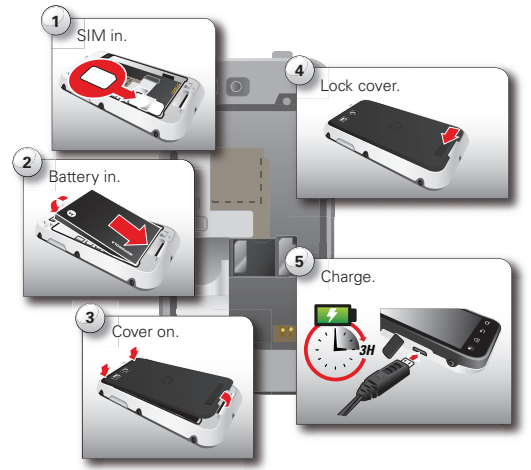


## START HERE

Let's get you up and running.

**Note:** To help protect your phone, always make sure that the battery cover and any connector covers are closed and secure.

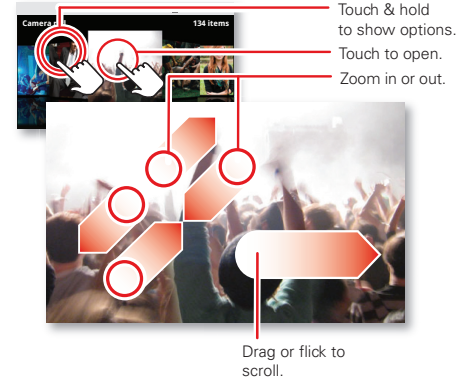
**Caution:** Before assembling, charging or using your phone for the first time, please read the important safety, regulatory and legal information packaged with your product.



## TOUCH TIPS

It's all in the touch:

- **Touch:** Choose an icon or option.
- **Touch & hold:** Open options.
- **Drag:** Scroll or move slowly.
- **Flick:** Scroll or move quickly.
- **Pinch:** To zoom maps, webpages or photos, slide fingers apart or together.



## HOME SCREEN

The *home screen* gives you all your latest information in one place. It's what you see when you turn on the phone or touch Home (⌂) from a menu. Add widgets and shortcuts to your home screen to see what's important to you. To make the home screen yours, see "PERSONALISE"

**Note:** This phone supports data-intensive apps and services. It is strongly recommended that you purchase a data plan that meets your needs. Contact your service provider for details.

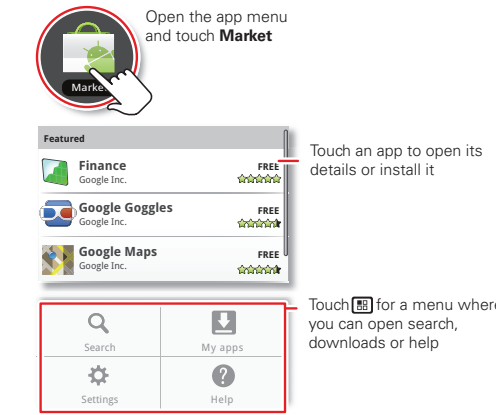


## APPS

All your apps, all together:

- **App menu:** To open the app menu, touch (⌵) on the home screen. To close the app menu, touch Home (⌂) or Back (⏪).
- **More:** Touch (⌵) > Market.

**Tip:** Choose your apps carefully, from trusted sites like Market, as some may impact your phone's performance.



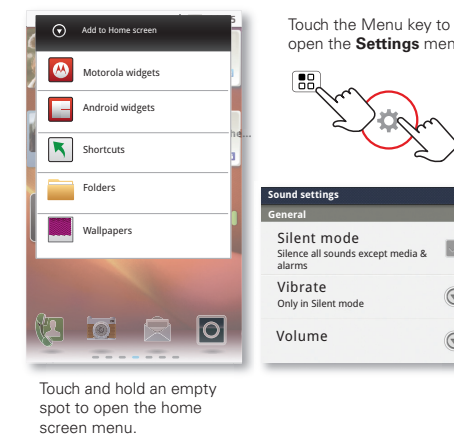
Certain features, services and applications are network-dependent and may not be available in all areas; additional terms, conditions and/or charges may apply. Contact your service provider for details. All features, functionality and other product specifications, as well as the information contained in this guide, are based upon the latest available information and believed to be accurate at the time of printing. Motorola reserves the right to change or modify any information or specifications without notice or obligation. **Note:** The images in this guide are examples only. MOTOROLA and the Stylised M Logo are trademarks or registered trademarks of Motorola Trademark Holdings, LLC. Google, the Google logo, Google Maps, Google Talk, Google Latitude, Gmail, YouTube, Picasa, Android and Android Market are trademarks of Google, Inc. All other product or service names are the property of their respective owners. © 2011 Motorola Mobility Inc. All rights reserved. Product ID: MOTODEFY™+ Manual Number: 68004153004



## PERSONALISE

Go ahead, add your personal touch. Change your widgets, wallpaper, ringtone and more—make it yours.

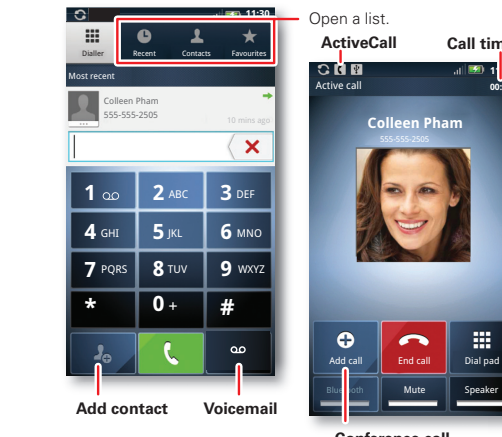
- **Home screen:** Touch and hold an empty spot until you see the **Add to Home screen** menu.
  - Tip:** To move or delete something, touch and hold it to drag to a new location or to the bin at the top of the screen.
- **Ringtones & sounds:** Touch Menu > **Settings** > **Sound**.



## CALLS

Your dial pad, call lists, contacts and favourites are just a touch or two away—no menus needed. Just touch **Dialler** on the home screen.

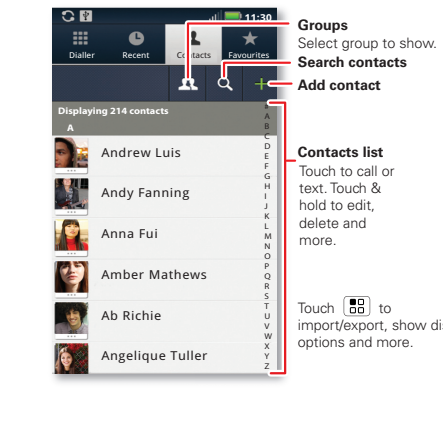
**Tip:** During a call, touch Home or Back to hide the active call display and use other apps. To reopen it, touch **Dialler**.



## CONTACTS

Contacts like you've never had before, downloaded from your accounts and backed up on MOTOBLUR.

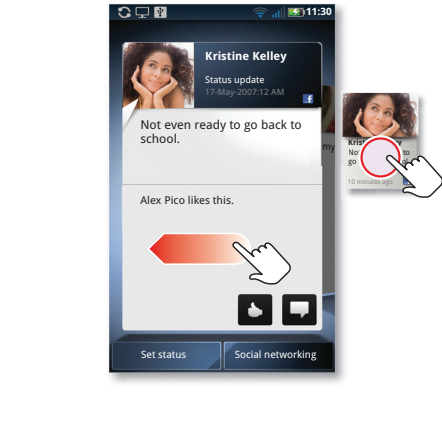
- Touch > **Contacts** or > **Contacts**.
- **Scroll:** Flick or drag the list. Touch a letter on the right (A - Z) to jump to entries.
- **Search:** Touch to open a keypad, then type the contact name.
- **More:** To transfer your contacts to your phone, or organise your contacts, go to [www.motorola.com/mymotoblur](http://www.motorola.com/mymotoblur).



## UPDATES

Find out what everyone is doing. Touch your **Social networking** or **Messages** widgets to see the newest update, then:

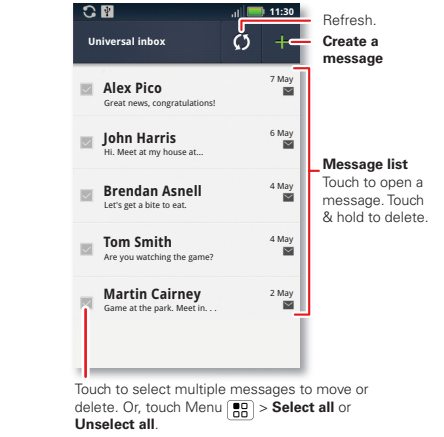
- **See more:** Flick left to see more updates or messages.
  - **See details:** Touch **Social networking**, then touch the social network's icon for more access.
- Tip:** To add social network or email accounts, touch Menu > **Settings** > **Accounts** > **Add account**.



## MESSAGES

All of your messages stay in one place—text, IM, email, Facebook and more. Touch > **Messaging** > **Universal inbox**.

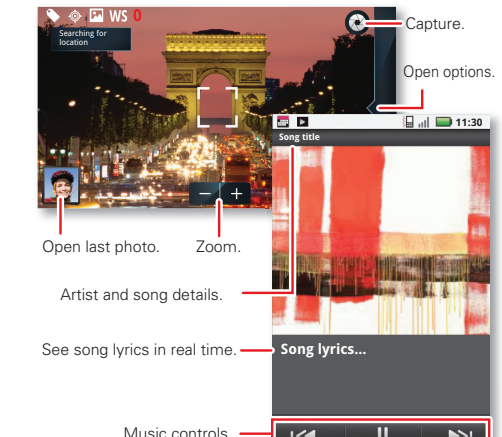
- **Tip:** To edit the message types shown in the Universal inbox, touch Menu > **Edit universal inbox**.
- To view and manage messages by type (**Text messaging**, **Facebook** or **Email**), remove them from your Universal inbox.



## MEDIA

See it, capture it, share it! You'll even have time to relax to some music.

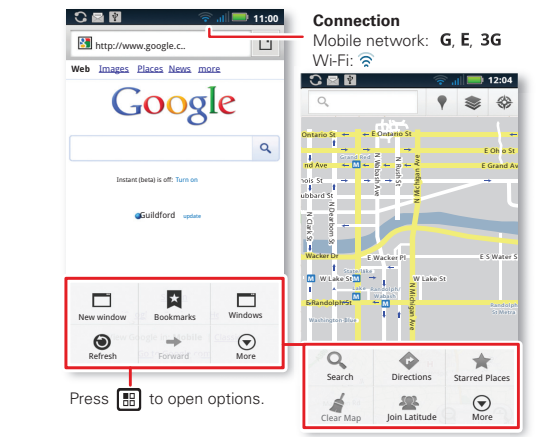
- **Photos:** Touch **Camera**. To take the photo, touch .
- **Videos:** Touch > **Camcorder**. To start the video, touch . Touch to stop the video.
- To see the photos and videos you've taken, touch > **Gallery**.
- **Music:** Touch > **Music**, then touch a category.



## WEB & MAPS

Browse, download and search (of course). And if you need to know where you are or where you're going, we've got that covered too.

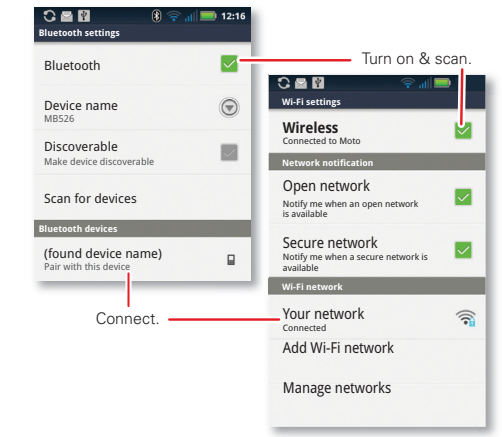
- **Browser:** Touch > **Browser** and surf to your heart's content.
- **Rich web content:** With Adobe® Flash® Player 10.1 support you can access your favourite websites.
- **Maps:** Touch > **Maps** to use the Google Maps™ you know and love. With built-in GPS, you'll have pinpoint turn-by-turn navigation all the way.



## WIRELESS

Lose the wires—touch Menu > **Settings** > **Wireless & networks**.

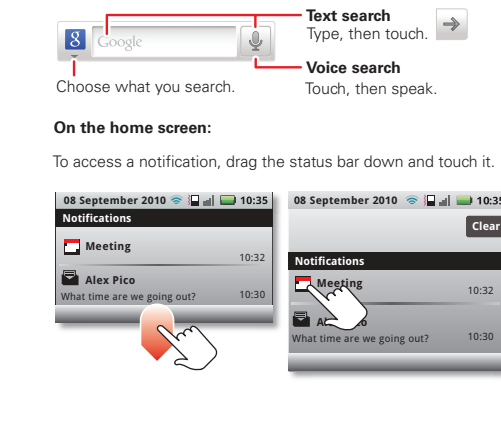
- **Bluetooth:** For hands-free calls and wireless music, touch Bluetooth settings and connect to your accessory.
- **Wi-Fi:** For fast Internet access, touch Wi-Fi settings and connect to a home, office or hotspot network. For connection details, touch Menu > **Advanced**.



## TIPS

Here are some good things to know:

- **Set lock screen:** Touch Menu > **Settings** > **Location & security** > **Set up screen lock**.
- **Control Bluetooth™, Wi-Fi & GPS:** Touch and hold an empty spot on your home screen, then touch **Motorola widgets** > **Bluetooth toggle**, **Wi-Fi toggle** or **GPS toggle**.
- **Change profiles:** Touch Menu > **Profiles** to design different home screens for **Work**, **Home** or **Weekend**.
- **Voice dialling & voice commands:** Touch > **Voice commands**.



## MORE

Want more? You got it:

- **Answers:** Touch > **Help centre**.
- You can also flick your home screen left or right to see the Getting started and Tips & tricks widgets.
- **Support:** Phone updates, PC software, user guides, online help and more at [www.motorola.com/mydefyplus](http://www.motorola.com/mydefyplus).
- **MOTOBLUR:** After you create a MOTOBLUR account, open it at [www.motorola.com/mymotoblur](http://www.motorola.com/mymotoblur).
- **Accessories:** Find optional accessories for your phone at [www.motorola.com/products](http://www.motorola.com/products).

**SAR** This product meets the applicable SAR limits of 1.6 W/kg (FCC) and 2.0 W/kg (ICNIRP). The limits and guidelines include a substantial safety margin designed to assure the safety of all persons, regardless of age and health. The highest SAR values measured for this device are listed in the legal and safety information packaged with your product.

**Note:** When carrying the product or using it while worn on your body, either use an approved accessory such as a holster or otherwise maintain a distance of 2.5 cm (1 inch) from the body to ensure compliance with RF exposure requirements. Note that the product may be transmitting even if you are not making a phone call.