

# Lenovo

100e/300e/500e Chromebook 2nd Gen

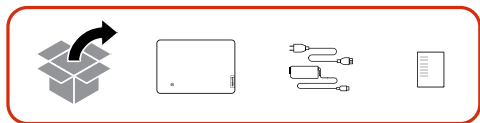
## Setup Guide

Lenovo

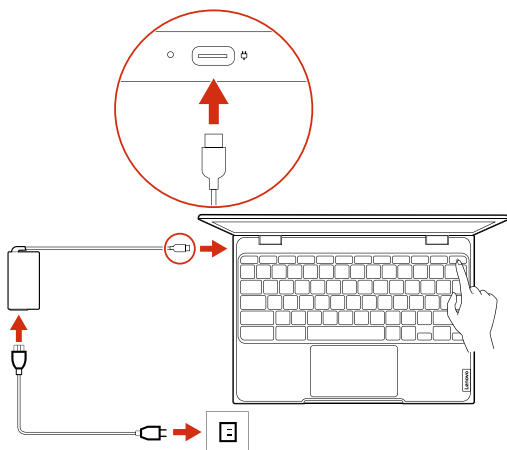
For Barcode Position Only

# Initial Setup

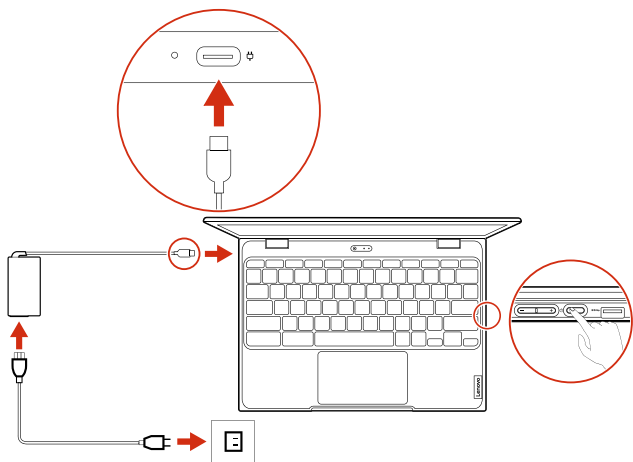
---



## Lenovo 100e Chromebook 2nd Gen

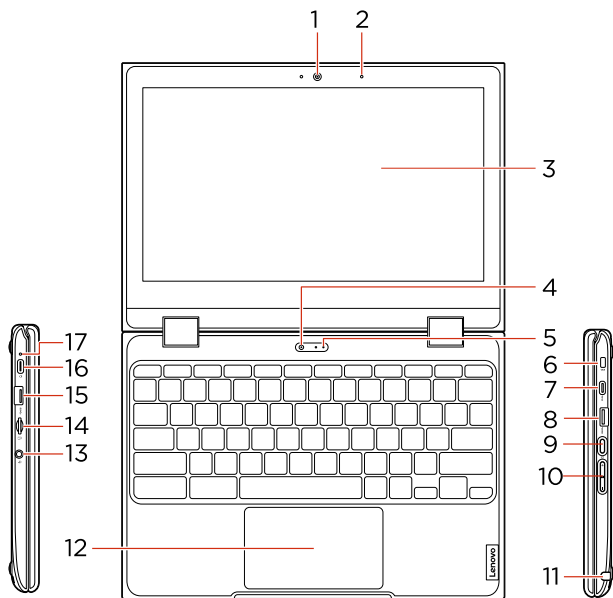


## Lenovo 300e/500e Chromebook 2nd Gen

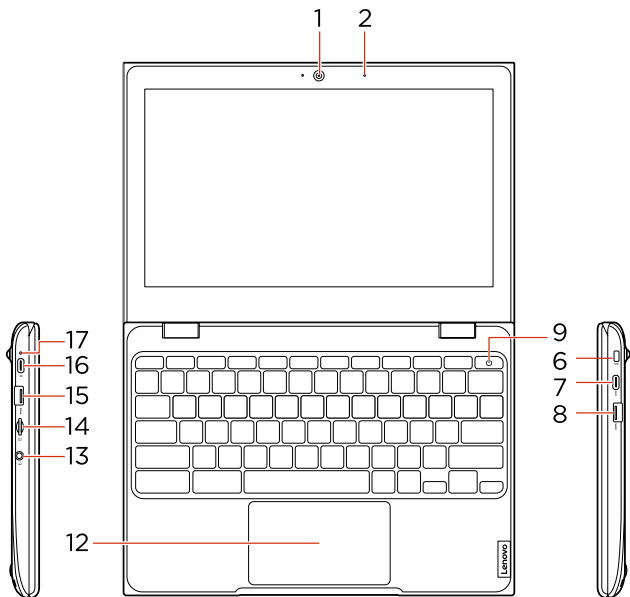


# Overview

## Lenovo 300e/500e Chromebook 2nd Gen



# Lenovo 100e Chromebook 2nd Gen



- |                            |   |
|----------------------------|---|
| 1. Front camera            | 10. Volume up / down button             |
| 2. Microphone              | * 11. Pen slot                          |
| 3. Multi-touch screen      | 12. Touchpad                            |
| * 4. World-Facing camera   | 13. Audio connector                     |
| * 5. Microphone            | 14. microSD card slot                   |
| 6. Mini security-lock slot | 15. USB 3.2 connector Gen 1             |
| 7. USB-C™ connector        | 16. Power connector / USB-C connector   |
| 8. USB 3.2 connector Gen 1 | 17. Battery / Charging status indicator |
| 9. Power button            |   |

**i** Read the statement on USB transfer rate in the *User Guide*. Refer to the *Safety and Warranty Guide* for accessing the *User Guide*.

# Additional information

## Specific absorption rate for European Union

YOUR DEVICE MEETS INTERNATIONAL GUIDELINES FOR EXPOSURE TO RADIO WAVES.

The Europe 10g Specific Absorption Rate (SAR) limit for mobile devices is 2.0 W/kg. To view your product specific SAR value, go to <https://support.lenovo.com/us/en/solutions/sar>.

If you are interested in further reducing your RF exposure then you can easily do so by limiting your usage or simply keeping the device away from the body.

## European Union – compliance with the Radio Equipment Directive

Hereby, Lenovo (Singapore) Pte. Ltd., declares that the radio equipment type Lenovo 100e Chromebook 2nd Gen, Lenovo 300e Chromebook 2nd Gen, Lenovo 500e Chromebook 2nd Gen are in compliance with Directive 2014/53/EU.

The full text of the system EU declaration of conformity is available at the following Internet address:

<https://www.lenovo.com/us/en/compliance/eu-doc>

This radio equipment operates with the following frequency bands and maximum radio-frequency power:

Technology	Frequency band [MHz]	Maximum transmit power
WLAN 802.11b/g/n	2400 - 2483.5	< 20 dBm
WLAN 802.11a/n/ac	5150 - 5725	< 23 dBm
WLAN 802.11a/n/ac	5725 - 5875	< 13.98 dBm
Bluetooth BR/EDR/LE	2400 - 2483.5	< 20 dBm

Usage of all the radio devices is limited to indoor in the band 5150 MHz to 5350 MHz (channels 36, 40, 44, 48, 52, 56, 60, 64).



---

**First Edition (January 2020)**

**© Copyright Lenovo 2020.**

LIMITED AND RESTRICTED RIGHTS NOTICE: If data or software is delivered pursuant to a General Services Administration "GSA" contract, use, reproduction, or disclosure is subject to restrictions set forth in Contract No. GS-35F-05925.

**Reduce | Reuse | Recycle**

