

Lenovo
Yoga S730-13IWL
Setup Guide



Printed in China
PN: SP40R58307

Lenovo™

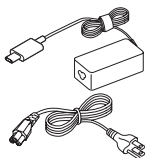
Unpack



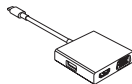
Computer



Publications



ac power adapter &
Power cord*



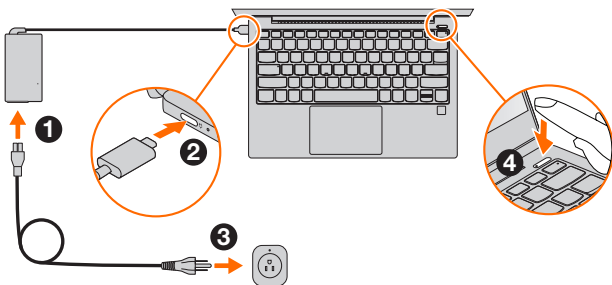
USB-C 3-in-1 hub
(For selected models)

*Power cord varies by country/region.

Note: The illustrations in this manual may differ from the actual product.

Initial setup

1. Connect to power ①→②→③.
2. Press the power button ④.
3. Set up Windows (such as language, network, and account).



Note: The battery pack of the computer is set to ship mode at the factory. The first time you start the computer, connect it to ac power to deactivate ship mode. Otherwise, the computer may not start.

Overview

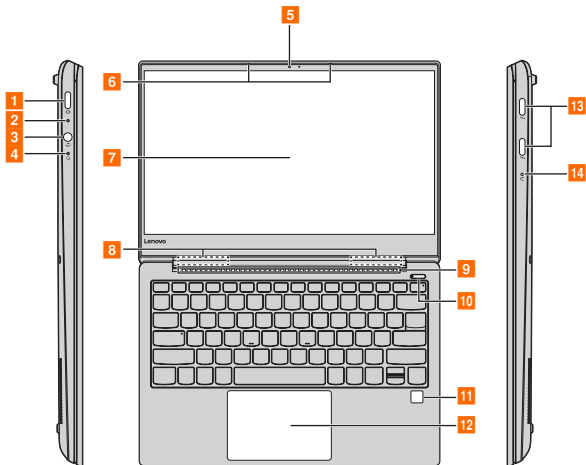


Figure 1. Overview - Lenovo Yoga S730-13IWL

- | | |
|-------------------------------------|-------------------------|
| 1 ac power adapter jack/Type-C port | 8 Wireless LAN antennas |
| 2 Battery/Charging status indicator | 9 Ventilation slots |
| 3 Combo audio jack | 10 Power button |
| 4 Power status indicator | 11 Fingerprint reader |
| 5 Integrated camera | 12 Touch pad |
| 6 Built-in microphone | 13 Type-C port |
| 7 Computer display | 14 Novo button |

Trademarks

LENOVO, LENOVO logo, Yoga and the Yoga logo are trademarks of Lenovo. Microsoft, Windows and Cortana are trademarks of the Microsoft group of companies. USB Type-C and USB-C are trademarks of USB Implementers Forum. Thunderbolt is a trademark of Intel Corporation or its subsidiaries in the U. S. and/ or other countries. DisplayPort is a trademark of the Video Electronics Standards Association. Wi-Fi is a registered trademark of Wi-Fi Alliance. All other trademarks are the property of their respective owners. © 2018 Lenovo.

First Edition (July 2018)
© Copyright Lenovo 2018.

LIMITED AND RESTRICTED RIGHTS NOTICE: If data or software is delivered pursuant to a General Services Administration “GSA” contract, use, reproduction, or disclosure is subject to restrictions set forth in Contract No. GS-35F-05925.

Reduce | Reuse | Recycle

