

# Rugged mobile receipt & label printer range

**RJ Series**  
mobile printers

[www.brother.eu](http://www.brother.eu)



**RJ Series**



**Empower  
workers to  
create and  
amend labels  
at any location**

Brother provide a comprehensive range of RJ mobile printers. They feature impressive print speeds and a rugged build quality to fit the requirements of a wide range of vertical market applications. Bluetooth, Wireless & USB connectivity options make it possible for busy mobile workers to print on site or in the field.



## RJ Series mobile printers



### Rugged design

Due to the nature of many mobile applications, printers may be exposed to a range of outdoor conditions which can affect the print operation or cause damage e.g. traffic warden printing in the field. However, RJ carries IP54 certification offering that extra piece of mind for such outdoor applications subject to damp /moisture or indoor environments where dust is present. In addition, The RJ range is drop tested up to 2.5 metres to provide extra credibility in terms of toughness and reliability.



# Trust RJ Series mobile printers to take on every application

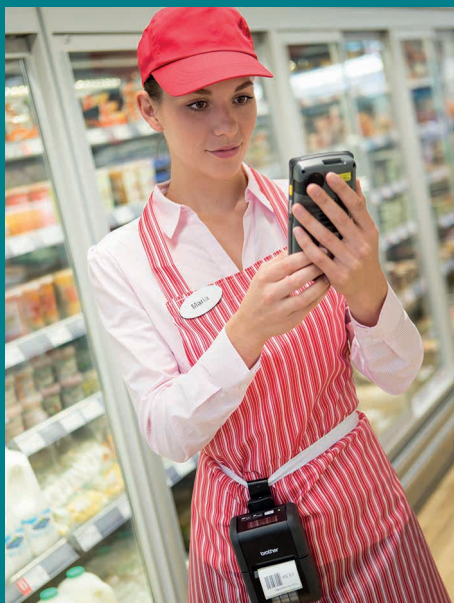
## Retail

Increase efficiency for retailers with lightweight, durable and easy to use mobile printers. This provides staff with a simple and accurate labelling and receipt solution, perfect for pricing, promotions and queue-busting to increase customer satisfaction.



### Applications include:

- Shelf edge labels
- 'Queue busting' receipt printing
- Mark down or discount labels
- Price labels
- Food traceability labelling



## Direct Store Deliveries

Agents need to be equipped with a seamless solution to help streamline their workflow and minimise downtime. Mobility and integration is key, so agents have access to systems providing pricing, invoicing, inventory control, and customer information. This makes it easier to produce invoices on-site.



### Applications include:

- Sales orders and confirmations
- Returned goods receipts and labels
- Customer receipts
- Delivery receipts



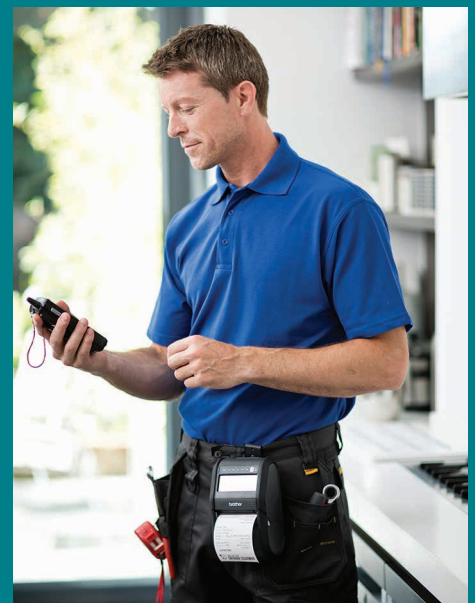
## Field Service

Whether you need receipts or smaller format labels, without a mobile print solution, handwritten documents are time consuming and prone to error. That's why most businesses are empowering their workforce with mobile technology, meaning they complete tasks on the move, professionally and on schedule.



### Applications include:

- Receipts and invoices
- Repair estimates
- Statements of work
- Work orders
- Estimates and quotations
- Maintenance and service reports



## RJ Series

### Public Safety

Increase operational efficiency by allowing law enforcement officers and emergency staff to document and report incidents more accurately and efficiently, at the point of interaction. With their rugged design, fast print speed & reliable operation, the range offers a competitive combination of performance and features.



#### Applications include:

- Parking violations
- Recording of accidents and crime scenes
- Electronic citations and fines
- Warning Notices



### Warehousing

Efficient warehousing operations and worker productivity are critical to the success of many companies. Using wireless connectivity, the Brother RJ mobile printer range provide workers with the ability to print barcode labels on-demand, at the point of application. This saves time and reduces potential errors caused by mislabelling.



#### Applications include:

- Work-in-progress labels
- Bin and shelf labels
- Shipping and despatch labels
- Inventory pick and return tickets



# RJ series range brief summary

|         |         |         |         |         |         |          |           |
|---------|---------|---------|---------|---------|---------|----------|-----------|
| RJ-2030 | RJ-2050 | RJ-2140 | RJ-2150 | RJ-3050 | RJ-3150 | RJ-4230B | RJ-4250WB |
| 2 Inch  |         |         |         | 3 Inch  |         | 4 Inch   |           |

## Printing

|                  |                |                                |  |                |  |                |  |
|------------------|----------------|--------------------------------|--|----------------|--|----------------|--|
| Print technology | Direct thermal |                                |  | Direct thermal |  | Direct thermal |  |
| Print speed      | 152mm/sec      |                                |  | 127mm/sec      |  | 127mm/sec      |  |
| Resolution       | 203dpi         |                                |  | 203dpi         |  | 203dpi         |  |
| Max print width  | 54mm (receipt) | 54mm (receipt)<br>51mm (label) |  | 72mm           |  | 104mm          |  |

## Media Types

|         |   |   |   |   |   |   |   |
|---------|---|---|---|---|---|---|---|
| Receipt | ● | ● | ● | ● | ● | ● | ● |
| Labels  |   |   | ● | ● |   | ● | ● |

## Connectivity

|              |   |   |   |   |   |   |   |
|--------------|---|---|---|---|---|---|---|
| USB          | ● | ● | ● | ● | ● | ● | ● |
| Wireless LAN |   | ● | ● | ● | ● |   | ● |
| Bluetooth    | ● | ● |   | ● | ● | ● | ● |
| AirPrint     |   | ● | ● | ● | ● |   | ● |
| MFi          |   | ● |   | ● |   | ● | ● |

## General

|                          |   |                           |  |  |                           |  |  |
|--------------------------|---|---------------------------|--|--|---------------------------|--|--|
| IP rating                | IP54  |                           |  | IP54   |                           | IP54   |  |
| Drop protection (metres) | 2.5   |                           |  | 1.2  | 1.8                       | 2.1  |  |
| Weight (with battery)    | 465g  | 545g                      |  | 610g   | 680g                      | 850g   |  |
| Dimensions (mm)          | 122(w)<br>57(h)<br>100(d)   | 151(w)<br>73(h)<br>100(d) |  | 113(w)<br>80(h)<br>186(d)  | 116(w)<br>82(h)<br>189(d) | 153(w)<br>159(h)<br>68(d)  |  |
| Operating system support | Microsoft®<br>Windows Vista®<br>Windows® 7<br>Windows® 8<br>Windows® 8.1<br>Windows® 10 |                           |  | Microsoft®<br>Windows Vista®<br>Windows® 7<br>Windows® 8<br>Windows® 8.1<br>Microsoft®<br>Windows Server® 2008<br>2008 R2 / 2012 / 2012 R2 |                           | Microsoft®<br>Windows® 7<br>Windows® 8<br>Windows® 8.1<br>Windows® 10<br><br><b>RJ-4250WB also supports:</b><br>Microsoft®<br>Windows Server® 2008<br>2008 R2 / 2012 /<br>2012 R2 / 2016 |  |
| Mobile OS                | Android   | Android / iOS             |  | Android / iOS  |                           | Android / iOS  |  |
| Supported commands       | P-touch Template, ESC/P, Raster, ZPL II emulation, CPCL emulation                       |                           |  | P-touch Template, ESC/P, Raster, ZPL II emulation, CPCL emulation  |                           | P-touch Template, ESC/P, Raster, ZPL II emulation, CPCL emulation  |  |

Up to 2 inch



RJ-2030



RJ-2050



RJ-2140



RJ-2150

Up to 3 inch



RJ-3050



RJ-3150

Up to 4 inch



RJ-4230B



RJ-4250WB



Customise your  
RJ printer with  
the great range  
of accessories

# Accessories and print supplies

Brother has designed and engineered a wide range of accessories to help customise the solution, whatever your requirement. Brother accessories help workers to equip their device in-vehicle and on-body. Power options also help with increased battery demands.

## Power Options

### PA-BT-003

RJ-2000 Series only  
**Li-ion rechargeable Battery**  
RJ-2030 | RJ-2050  
RJ-2140 | RJ-2150



### PA-BT-001A PA-BT-001B

RJ-3000 Series only  
**Li-ion rechargeable Battery**  
RJ-3150 | RJ-3050  
A B



### PA-BT-006

RJ-4200 Series only  
**Rechargeable Li-ion smart Battery**  
RJ-4230B |  
RJ-4250WB



### PA-AD-600UK

Complete RJ Series  
**AC Adapter (UK)**  
Entire RJ Range



### PA-AD-600EU

Complete RJ Series  
**AC Adapter (EU)**  
Entire RJ Range



### PA-CD-600CG

Complete RJ Series  
**Car Adaptor (cigarette)**  
Entire RJ Range



### PA-CD-600WR

Complete RJ Series  
**Car Adapter (wired)**  
Entire RJ Range



## Additional Options

### PA-BC-002

RJ-2000 Series only  
**Battery Charging Unit (single)**  
RJ-2030 | RJ-2050  
RJ-2140 | RJ-2150



### PA-BC-001

RJ-3000 Series only  
**Battery Charging Unit (single)**  
RJ-3050 | RJ-3150



### PA-BC-003

RJ-4200 Series only  
**Battery Charging Unit (single)**  
RJ-4230B |  
RJ-4250WB



### PA-CR-001

RJ-3000 Series only  
**Charging Cradle**  
RJ-3050 | RJ-3150



### PA-CR-002

RJ-4200 Series only  
**Car Mount / Charging Cradle**  
RJ-4230B |  
RJ-4250WB



### PA-SS-4000

Complete RJ Series  
**Shoulder Strap**  
Entire RJ Range



## Media Options

### RD-R03E5

RJ-2000 / 4200 Series  
**Continuous Receipt Roll**  
Size: 58mm x 12mm  
Colour: white



### RD-Q04E1

RJ-2140 / 2150 & RJ-4200 Series  
**Die-cut Labels Roll**  
Label Size: 51mm x 26mm  
Colour: white  
Quantity: 450 per roll



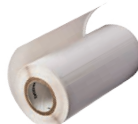
### RD-P08E5

RJ-3000 / 4200 Series  
**Continuous Receipt Roll**  
Width: 76mm x 35.3mm  
Colour: white



### RD-P09E1

RJ-3150 & RJ-4200 Series  
**Die Cut Labels Roll**  
Label size: 76mm x 44mm  
Colour: white  
Quantity: 335 per roll



### RD-M01E5

RJ-4200 Series  
**Continuous Receipt Roll**  
Width: 102mm x 27.5mm  
Colour: white



### RD-M03E1

RJ-4200 Series  
**Die Cut Labels Roll**  
Width: 102mm x 152mm  
Colour: white  
Quantity: 70 per roll



Brother provides all the necessary tools required for software developers to integrate printing into their mobile applications. Printer drivers are available for Windows OS, and Software Development Kits can be provided to support Windows Mobile\*, Android and iOS operating systems.

## Software Support Features

### Template mode

Design the required document on your Windows PC, including logos and barcodes. Once transferred and stored in the printer's memory, the template can be recalled and any data replaced, before printing with just a few short commands.

### AirPrint\* and MFi\* support

Easily connect to, and print from Apple devices thanks to AirPrint and MFi support.





### Mobile Deploy

Cloud-based app for mobile devices (iOS and Android™), which allows IT administrators to remotely update and configure multiple Brother mobile printers. Using Mobile Deploy, the administrator can easily upload new update packages to an online location, and then share the URLs with the users.

### Printer Commands\*

With support for ZPL II emulation, CPCL emulation in addition to Brother ESC/P commands, developers can easily integrate mobile printing into existing legacy systems.

<https://www.brother.eu/developer>



\* Check model compatibility

# RJ series range

## 2 inch



### Printing / Media

|                                |                              |                              |
|--------------------------------|------------------------------|------------------------------|
| Print technology               | Direct thermal               |                              |
| Print resolution               | 203dpi                       |                              |
| Print speed                    | Maximum 6ips (152mm/sec)*    |                              |
| Maximum print width on receipt | 54mm                         |                              |
| Maximum print length           | 1 metre                      |                              |
| Media sensor type              | Reflective                   | Transmissive / Reflective    |
| Cutter type                    | Tear bar                     |                              |
| Media types                    | Receipt, label**             | Receipt, label, tag label    |
| Receipt width                  | 58mm max                     |                              |
| Receipt paper thickness        | 2.3-3.5 mils (0.058-0.090mm) |                              |
| Label width                    | -                            | 55mm                         |
| Label thickness                | -                            | 3.1-6.7 mils (0.080-0.170mm) |
| Roll diameter                  | 40mm max                     | 50mm max                     |
| Core diameter                  | 10.2mm                       |                              |

### LCD

|      |                        |
|------|------------------------|
| Type | Backlit monochrome LCD |
|------|------------------------|

### Connectivity

|  |   |  |
|--|---|--|
| USB  | USB version 2.0 full-speed (mini-B connector)   |  |
| USB host capability                          | -   |  |
| Bluetooth                                    | Bluetooth 2.1+EDR   |  |
| Bluetooth profiles                           | SPP (Serial Port Profile)<br>OPP (Object Push Profile)<br>BIP (Basic Imaging Profile)<br>HCRP (Hard Copy Cable Replacement Profile) | SPP (Serial Port Profile)<br>OPP (Object Push Profile)<br>BIP (Basic Imaging Profile)<br>HCRP (Hard Copy Cable Replacement Profile)<br>iAP supported                                     |
| MFi support                                  | -   | Yes  |
| Wireless LAN                                 | -   | IEEE802.11b/g/n<br>Infrastructure mode: [b/g/n]<br>Adhoc mode: [b/g/n]<br>Wireless direct mode: [g/n]  |
| Wireless LAN security (AdHoc mode)           | -   | None / WEP   |
| Wireless LAN security (Infrastructure mode)  | -   | None/WEP64/WEP128<br>Common key authentication (WEP)<br>WPA/WPA2-PSK (TKIP+AES)<br>LEAP (CKIP)<br>EAP-FAST (TKIP/AES)<br>PEAP (TKIP/AES) *3<br>EAP-TLS (TKIP/AES)<br>EAP-TTLS (TKIP/AES) |
| Wireless LAN security (Wireless direct mode) | -   | None / WPA2-PSK (AES) / WEP  |

\* Under Brother standard environment

\*\* With black mark only



## Software / Firmware

|  |  |
|--|--|
| Operating system support   | Microsoft® Windows Vista®/ Windows® 7 / Windows® 8 Windows® 8.1 / Windows® 10<br>Android 4.0.3 or higher (SDK)<br>iOS 6 or higher (SDK)<br>(visit <a href="http://support.brother.com">http://support.brother.com</a> for latest OS support)   |
| Microsoft® WHQL certified drivers  | Yes  |
| SDK availability<br>(visit <a href="http://www.brother.eu/developer">http://www.brother.eu/developer</a> ) | b-PAC (for Windows)<br>Android 4.0.3 or higher (SDK)<br>iOS 6 or higher (SDK)  |
| Supported printer commands   | ZPLII emulation<br>CPCL emulation<br>ESC/P<br>P-touch Template<br>Raster   |
| Barcode symbologies  | CODE39 / ITF (I-2/5) / EAN-13 / EAN-8 / UPC-A / UPC-E / CODABAR / CODE128 / GS1-128(UCC/EAN-128) / RSS symbols / CODE93 / POSTNET / UPC/EAN EXTENSION / MSI / QR Code (model 1, model 2, micro QR) / PDF417 (Standard, Truncate, MicroPDF417) / Data Matrix (ECC200 Square, ECC200 Rectangular) / MaxiCode / Aztec |
| Internal fonts   | <ESC/P commands><br>Bitmap fonts: Gothic, Letter Gothic Bold, Helsinki. Font sizes: 16, 24, 32 dots<br>Outline fonts: Gothic, Letter Gothic Bold, Helsinki. Font sizes: 400 dots (maximum)<br><P-touch Template commands><br>Outline fonts: Gothic, Letter Gothic Bold, Helsinki. Font sizes: 400dots (maximum)    |

## Memory

|       |   |
|-------|---|
| RAM   | 32MB                                      |
| Flash | 32MB (12MB available for template upload) |

## Environmental

|                       |  |
|-----------------------|--|
| Drop protection*      | 2.5m   |
| Sealing               | IP54   |
| Operating temperature | Operating: -10C to +50C / Charging: 0C to +40C     |
| Operating humidity    | 10%-90% / Maximum web bulb: +27C (no condensation) |
| Storage temperature   | -20C to +60C for 120 hours maximum                 |
| Storage humidity      | +45C @ 95% for 120 hours maximum                   |

## Power

|                                  |   |
|----------------------------------|---|
| Battery                          | Rechargeable Li-ion (7.2V)                          |
| AC adapter (optional accessory)  | 100-240V AC (50/60Hz) to 15V DC (only for charging) |
| Car adapter (optional accessory) | 12V DC (only for charging)                          |

## Weights / Dimensions

|                            |                            |                            |
|----------------------------|----------------------------|----------------------------|
| Dimensions                 | 122(w) x 57(h) x 100(d) mm | 151(w) x 73(h) x 100(d) mm |
| Weight (including battery) | 465g                       | 545g                       |

## Included items

|                 |   |
|-----------------|---|
| Supplied in box | Battery, Li-ion battery, belt clip, documentation |
|-----------------|---|

# RJ series range

## 3 & 4 inch



### Printing / Media

|                                |                              |                                    |   |
|--------------------------------|------------------------------|------------------------------------|---|
| Print technology               | Direct thermal               |                                    |   |
| Print resolution               | 203dpi                       |                                    |   |
| Print speed                    | Maximum 127mm/second (5ips)  |                                    |   |
| Maximum print width on receipt | 72mm                         |                                    | 104mm                                     |
| Maximum print length           | 1 metre                      |                                    | 3 metres                                  |
| Media sensor type              | Reflective                   | Transmissive / Reflective          | Transmissive / Reflective                 |
| Cutter type                    | Tear bar                     |                                    | Double tear bar                           |
| Media types                    | Receipt / label*             | Receipt / label / tag label        | Receipt / label / Tag label               |
| Receipt width                  | 80mm                         |                                    | 113mm                                     |
| Receipt paper thickness        | 2.3-3.5 mils (0.058-0.090mm) |                                    | 2.2 mil to 3.5 mil (0.058 mm to 0.090 mm) |
| Label width                    | -                            | 76mm                               | 113mm                                     |
| Label thickness                | -                            | 3.2-6.7 mils (0.080-0.170 mm)      | 3.1 mil to 6.6 mil (0.080 mm to 0.170 mm) |
| Roll diameter                  | 66mm max                     |                                    | 58mm max                                  |
| Core diameter                  | 10.2mm (receipt)             | 10.2mm (receipt) / 25.4mm (labels) | 12.7mm (receipt) / 25.4mm (labels)        |

### LCD

|      |   |        |      |
|------|---|--------|------|
| Type | - | Colour | Mono |
|------|---|--------|------|

### Connectivity

|  |   |                  |  |
|--|---|------------------|--|
| USB  | Yes   |                  |  |
| USB host capability                          | -   | Type A connector | -  |
| Bluetooth                                    | Bluetooth 2.1+EDR   |                  | Bluetooth 4.2 (supporting low energy)  |
| Bluetooth profiles                           | SPP (Serial Port Profile)<br>OPP (Object Push Profile)  |                  | Classic: SPP (Serial Port Profile) / OPP (Object Push Profile) / HCRP (Hard Copy Cable Replacement Profile) / iAP supported<br>Low Energy: GATT  |
| MFi support                                  | No  |                  | Yes  |
| Wireless LAN                                 | IEEE802.11b/g/n<br>Infrastructure mode / Wireless direct mode: [b/g/n]<br>Adhoc mode: [b]<br>Wireless direct mode: [b/g/n]  |                  | -<br>Wireless LAN<br>IEEE802.11 [a/b/g/n]<br>(Infrastructure mode:<br>[a/b/g/n] / Wireless<br>direct mode:[g/n])   |
| Wireless LAN security (AdHoc mode)           | None / WEP  |                  | -  |
| Wireless LAN security (Infrastructure mode)  | None/WEP64/WEP128<br>Common key authentication (WEP)<br>WPA/WPA2-PSK (TKIP+AES)<br>LEAP (CKIP)<br>EAP-FAST (TKIP/AES)<br>PEAP (TKIP/AES)<br>EAP-TLS (TKIP/AES)<br>EAP-TTLS (TKIP/AES) |                  | -<br>Open system (None/<br>WEP64/WEP128)<br>Common key<br>authentication (WEP)<br>WPA/WPA2-PSK<br>(TKIP+AES)<br>EAP-FAST (TKIP/AES)<br>PEAP (TKIP/AES) *3<br>EAP-TLS (TKIP/AES)<br>EAP-TTLS (TKIP/AES) |
| Wireless LAN security (Wireless direct mode) | WPA2-PSK (AES)  |                  | -<br>WPA2-PSK (AES)  |
| NFC  | -   |                  | Yes (Passive only)   |

\* Black mark only



## Software / Firmware

Operating system support

Visit: <http://support.brother.com>  
for latest OS support

|  |   |   |  |
|--|---|---|--|
|  | Microsoft® Windows Vista® / Windows® 7 / Windows® 8 Windows® 8.1 / Windows® 10<br>Android 4.0.3 or higher (SDK)<br>iOS 6 or higher (SDK)<br>Visit <a href="http://support.brother.com">http://support.brother.com</a><br>for latest OS support  | Microsoft® Windows Vista® / Windows® 7 / Windows® 8 Windows® 8.1 / Windows® 10  | Microsoft® Windows Vista® / Windows® 7 / Windows® 8 Windows® 8.1 / Windows® 10 / Microsoft® Windows Server® 2003 / 2008 / 2008 R2 / 2012 / 2012 R2 |
| Microsoft® WHQL certified drivers  | Yes   |   |  |
| SDK availability<br>(visit <a href="http://www.brother.eu/developer">http://www.brother.eu/developer</a> ) | Android 2.3 or later<br>iOS 5 or later  | Android 4.0.3 or later<br>iOS 7 or later  |  |
| Supported printer commands   | ZPLII emulation / CPCL emulation / ESC/P / P-touch Template / Raster  |   |  |
| Barcode symbologies  | Using ESC/P with P-touch Template<br>CODE39, ITF(I-2/5), EAN-13 (JAN13), EAN-8(JAN8),<br>UPC-A, UPC-E, CODABAR (NW-7), CODE128, GS1-128<br>(UCC/EAN-128), QR Code (model 1, model 2, micro QR),<br>PDF417 (Standard, Truncate, MicroPDF417),<br>DataMatrix (ECC200 Square, ECC200 Rectangular),<br>MaxiCode, GS1 DataBar<br>(Standard, Truncated, Stacked, Stacked Omnidirectional),<br>GS1 DataBar Limited, GS1 DataBar Expanded (Standard, Stacked)<br>Using only ESC/P<br>UPC/EAN EXTENSION, CODE93, POSTNET | Linear: CODE 39, ITF(I-2/5),<br>EAN-8, EAN-13, UPC-A, UPC-E, UPC/EAN EXTENSION<br>CODABAR, CODE 128, GS1-128(UCC/EAN 128),<br>POSTNET, GS1 Databar (Omnidirectional / Truncated / Stacked<br>/Stacked Omnidirectional / Limited / Expanded / Expanded<br>Stacked) CODE93, MSI/Plessey Intelligent Mail Barcode<br><br>2-dimensional: QR Code (model 1, model 2, micro QR),<br>Maxi code, PDF417 (Standard, Truncate)<br>MicroPDF417, Data Matrix (Square, Rectangular)<br>AztecCode |  |

## Memory

|       |      |       |
|-------|------|-------|
| RAM   | 32MB | 256MB |
| Flash | 32MB | 64MB  |

## Environmental

|                       |   |  |            |
|-----------------------|---|--|------------|
| Drop protection       | 1.2 metres  | 1.8 metres   | 2.1 metres |
| Sealing               | IP54  |  |            |
| Operating temperature | Operating: -10C to +50C / Charging: 0C to +40C      | Battery: -20°C to 55°C AC adapter: -10°C to 40°C<br>Car adapter: -10°C to 50°C |            |
| Operating humidity    | 10-90%, Max wet bulb: 27 deg C<br>(No condensation) | 10% - 90% , Max wet bulb: 27 deg C<br>(No condensation)                        |            |
| Storage temperature   | -20C to +60 deg C                                   |  |            |
| Storage humidity      | 10-90%, Max wet bulb: 45 deg C<br>(No condensation) | 10% - 90% , Max wet bulb: 45 deg C<br>(No condensation)                        |            |

## Power

|                                  |   |  |
|----------------------------------|---|--|
| Battery (Option)                 | Rechargeable Li-ion (7.2V)  | Rechargeable Li-ion (7.2V) smart battery |
| AC adapter (optional accessory)  | AC adapter (15 V) only for charging (50/60Hz)                     |  |
| Car adapter (optional accessory) | Cigarette car adapter or Wired type (12 V (DC)) only for charging |  |

## Weights / Dimensions

|                            |                         |                         |                           |
|----------------------------|-------------------------|-------------------------|---------------------------|
| Dimensions (in mm)         | 113(w) x 80(h) x 186(d) | 116(w) x 82(h) x 189(d) | 153(w) x 68h) x 159(d) mm |
| Weight (including battery) | 610g                    | 680g                    | 850g                      |

## Included items

|                 |   |  |   |
|-----------------|---|--|---|
| Supplied in box | Printer<br>Li-ion battery (PA-BT-001-B)<br>Belt clip<br>Documentation | Printer<br>Li-ion battery (PA-BT-001-A)<br>Button type battery<br>Belt clip<br>Documentation | Printer<br>Belt clip<br>Adjuster guide lockers<br>Documentation |
|-----------------|---|--|---|

# brother

at your side

Kontakt:

[www.brother.se](http://www.brother.se)

**Brother Sverige**

Hulda Lindgrens gata 6B,

421 31 Västra Frölunda

Tel: 031-734 12 00 Fax: 031-734 12 50

[www.brother.se](http://www.brother.se)