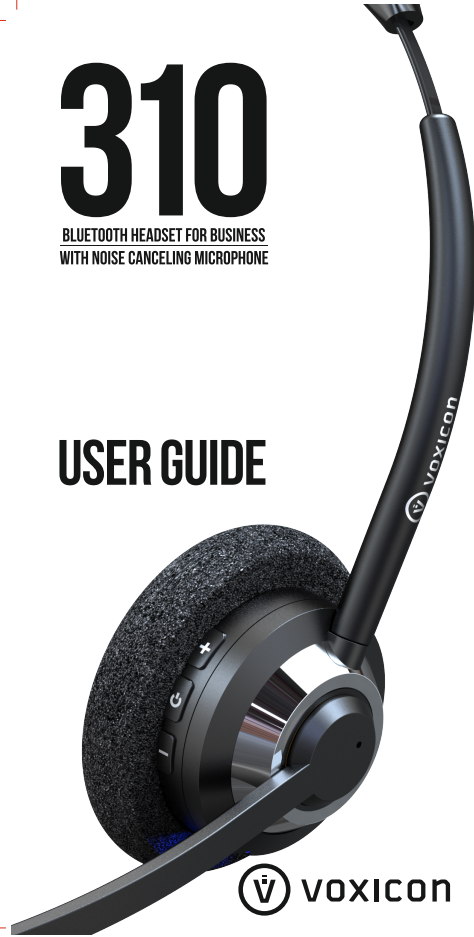


310

BLUETOOTH HEADSET FOR BUSINESS
WITH NOISE CANCELING MICROPHONE

USER GUIDE



Product Specifications

BT310-MKII Headset	
Weight (g)	(Mono) 55 (Stereo) 80
Dimensions (mm)	(M) 160x135x60 (S) 160x150x60
Microphones	Noise Canceling Microphone
Speakers	Wideband speaker
Bluetooth Solution	Qualcomm CSR Controller v4.1
Multipoint Pairing	Supported
Profiles	HSP, A2DP, AVRCP
Codec Support	SBC
Transmission Distance	Class 2, 10m/33ft
Transmission Frequency	2.4 to 2.48GHz
Battery Monitor for iOS	Supported
Play Time	(Mono) 10h (Stereo) 8h
Standby Time	>200h
Battery	3.7V Li-Polymer, 200mAh
Operating Temperature	0 to 40°C
Bluetooth Device ID	BT310MKII
Bluetooth Password	0000

What's In the Box

Contents may vary by product			
BT310-MKII Headset	x1	Micro-USB Charging Cable	x1
Headset Carrying Pouch	x1	Ear-cushion Foam	x1
BT Audio Adapter (Optional)	x1		

Usage Warning

(1) Using this headset to listen to excessive volume may cause permanent damage to your hearing. (2) If not in use for long period of time, recharge battery every 6-months. (3) Always store the headset with the power off. Avoid storage at extreme temperatures (<-20°C or >45°C), otherwise, this can shorten the battery life and affect speaker operation. Do not expose the headset to rain or any other liquids, clean using a dry cloth only. (4) Do not disassemble.

Tested to Comply with FCC Standards

This device complies with part 15 of FCC Rules. Operation is subject to the following two conditions: (1) This device may not cause harmful interference, and (2) this device must accept any interference received, including interference that may cause undesired operation.



Pairing Headset to BT Audio Adapter



ENTER PAIRING MODE

- When you see the headset flashing red and blue rapidly, it indicates the headset is now in pairing mode.
- Make sure the LED Indicator on the adapter is still flashing blue quickly.
- Wait for about 30 seconds until the units paired, it may take longer if you are surrounded by various wireless devices like wireless routers, computers, smartphone or tablets. Try to turn off bluetooth on your other devices if this process takes too long.
- Once the LED Indicator on the adapter flashes slowly AND the LED on the headset switches back to flashing blue only, the devices are paired.
- Pairing completed.

Pairing Headset to Other Devices

First of all, switch your BT310-MKII headset into pairing mode. Follow the same steps as above, pressing the **Multi-Function Button** for 5 seconds until the LED Indicator flashes red and blue quickly.

For Smartphones & Tablets under iOS

- Go to the settings page, select bluetooth, under Other Devices, select "BT310MKII", wait for it to connect, and lists under My Devices.

For Smartphones & Tablets under Android

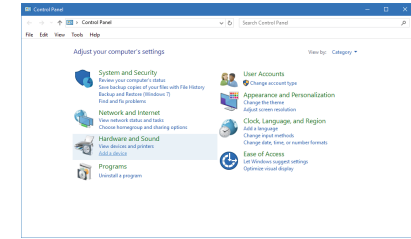
- Go to the settings page, select bluetooth, under Available Devices, select "BT310MKII", wait for it to connect, and lists under Paired Devices.

For Windows Computers

- Make sure your computer is equipped with bluetooth - follow steps on the next page:

Pairing Headset to Windows Computer

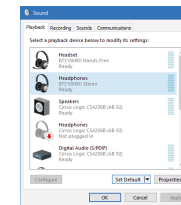
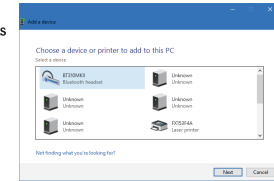
- Wearing your headset, open **Control Panel**. Under **Hardware and Sound**, Select **Add a device**.



- Make sure the **LED Indicator** on the headset is still flashing red and blue. You will see "BT310MKII" under **Select a device**. Select and click **Next**.

Wait a few moments for the device to be installed.

You should be able to hear the words "connected" from the headset.



- Open **Control Panel** again, select **Hardware and Sound**, then **Sound**

Under **Playback** tab, make sure you select the correct device. Choose **Headphone** if you want to listen to wide-band music quality. Choose **Headset** if you want to use it for voice communication.

Click **Set Default** and **OK** to complete.

- If you are using the headset for Skype or any other VoIP software, make sure you choose **BT310MKII Headset** under **Recording** tab as well.

Main Interface and Buttons



BT310 Headset

Interface & Controls

- Headband Cushion
- Metallic Headband
- Vol Up (+) Button
- Multi-Function Button
- Vol Down (-) Button
- Micro-USB Charging Jack
- Rotatable Mic Boom
- Bendable Mic Boom
- LED Indicator
- Foam Ear Cushion
- NC Microphone Chamber
- Dongle Pairing Button
- Dongle LED Indicator

BT Audio Adapter



OPTIONAL IN SOME MODELS

*Dongle may look different across versions.

Connection and Installation

MUST READ BEFORE STARTING

Universal BT Audio Adapter

- The adapter that comes with the box has been **pre-paired** with this particular BT310-MKII headset.
- There is no need to pair the headset unless the headset fails to connect.
- If your device (ie. Notebook, Smartphone, Tablet or TV box) comes with bluetooth connection, ALWAYS use the device's default connection, do not connect the BT Audio Adapter if your device has bluetooth inbuilt.

Setup

If you are certain your host device does not come with bluetooth connection:



- Connect the BT Audio Adapter to any USB port of your computer/device.
- The **Adapter LED-Indicator** will immediately light up blue with slow blink, indicating Paired and Online.
- Turn on your BT310-MKII headset by pressing and holding the **Multi-Function Button** for 2 seconds.
- The headset's **LED Indicator** will lit blue blinking twice every 2 seconds, also indicating Paired and Online.
- Make sure your computer's audio device is "M2 Adapter" *.

Pairing

- If you are replacing a new headset OR for some reason your headset can no longer connect to the adapter, press and hold the **Bluetooth Pairing Button** for 5 seconds until the **Adapter LED Indicator** flashes quickly, indicating Pairing Mode.
- Press and hold the **Multi-Function Button** for 5 seconds until **LED Indicator** flashes quickly red and blue. (shown next page)

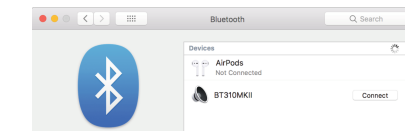
*Device name may differ across different versions of dongle.

Pairing Headset to a Mac

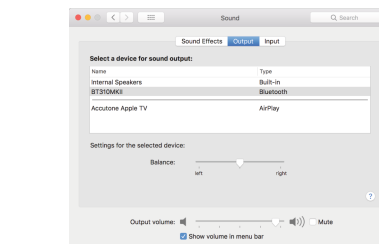
- Wearing your headset, open **System Preferences**. Select **Bluetooth**.



- Make sure the **LED Indicator** on the headset is still flashing red and blue. You will see "BT310MKII" under **Devices**. Select it and click **Connect**.



Once the headset is connected, you will see it shown under **Devices** with the word "Connected", you will also hear the word from the headset.



- To confirm, select **System Preferences > Sound**, to see if **BT310MKII** is selected under **Output** tab and **Input** tab as well.

Using the Headset

Powering On/Off

- Press and hold the **Multi-Function Button** for 2 seconds
- You will hear a message say "Power On"
- While headset is on, press and hold **Multi-Function Button** for 2 seconds to power off

Check Power

- With the headset powered on, press and hold the **Multi-Function Button** for 1 second, you will hear an audio message regarding the battery level.
- On iPhone and iPad, the battery of BT310-MKII will be shown as an icon on the main screen, or as a percentage under Batteries in Notification Center.

Volume Control

- Either during a phone call or audio application, press + button to increase audio volume until you hear a "beep" tone, indicating maximum volume.
- Press - button to decrease audio volume.
- The digital volume control on the headset can directly adjust the volume settings on Macs and iOS devices. On Windows, the volume of the headset is adjusted independently on the system volume.

Multi-Function Button

- When paired with Macs and iOS devices, the Multi-Function Button can be used to make/end calls, play/pause music and various other functions. It may not serve the same function under Windows or Android devices.

Audio Guide

- BT310-MKII has a full-function audio guidance. Here are some examples:

"Power On" - Headset is powered on.

"Power Off" - Headset is powered off.

"Pairing" - Headset entering Pairing Mode.

"Connected" - Headset is connected with at least one device.

"Your headset is disconnected" - Headset is disconnected from the last connected device.

Charging your Headset

- Connect with the supplied Micro-USB cable, or any Micro-USB charging cable to the headset's **Charging Jack**.
- Make sure you plug the USB-A end of the cable to an USB adapter verified by your local government safety-regulatory agency.
- Power adapter must be 5V not exceeding 1A current.

Wearing your Headset

- Make sure the **Microphone Chamber** is 2-inch away from your mouth.