

24-Port Gigabit IEEE 802.3at PoE+ Managed Injector Hub (720 watts)

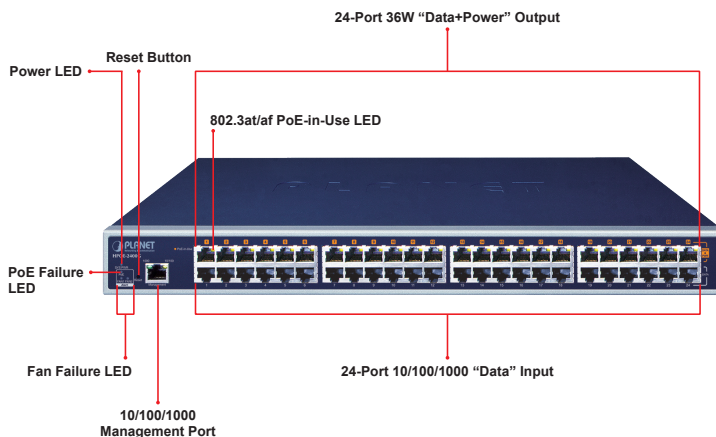


PLANET HPOE Managed PoE Injector Hub series, a cost-effective and quick PoE solution, is designed to perfectly upgrade an existing network infrastructure to **IEEE 802.3at Power over Ethernet Plus** network system without replacing the existing Ethernet Switch.

A Perfect Managed PoE+ Injector Hub with Full Power Budget

The HPOE-2400G is a high-density, rack-mountable managed IEEE 802.3at PoE+ injector hub featuring PLANET **intelligent PoE** functions through **web user interface** for remote management. It provides 24 10/100/1000BASE-T Ethernet ports featuring 802.3at PoE+ injector with a total PoE budget of 720 watts. Each PoE port can deliver up to 36-watt power over Cat.5/5e/6 Ethernet UTP cables which allow data and power to transmit simultaneously to a remote 802.3at/af powered device (PD).

The HPOE-2400G enables centralization of the power supply and optimizes the installation and power management of remote network devices, and provides a quick, safe and cost-effective Power over Ethernet network solution for small businesses and enterprises.



Interface

- 48-port RJ45
- 24-port 10/100/1000Mbps "Data input"
- 24-port 10/100/1000Mbps "Data + Power output"
- One 10/100/1000BASE-T management port

Power over Ethernet

- Complies with IEEE 802.3at Power over Ethernet Plus mid-span PSE
- Up to 24 IEEE 802.3at/802.3af devices powered
- 720-watt PoE budget
- Supports PoE power up to 30.8 watts (802.3at PoE+)/15.4 watts (802.3af PoE) for each PoE port
- Automatically detects PD
- Circuit protection prevents power interference between ports
- Remote power feeding up to 100m

PoE Management

- Total PoE power budget control
- Per port PoE power schedule
- PoE function enable/disable
- Per port PoE function enable/disable
- PoE port power feeding priority
- PD classification detection
- Over temperature protection
- PD alive check

Management

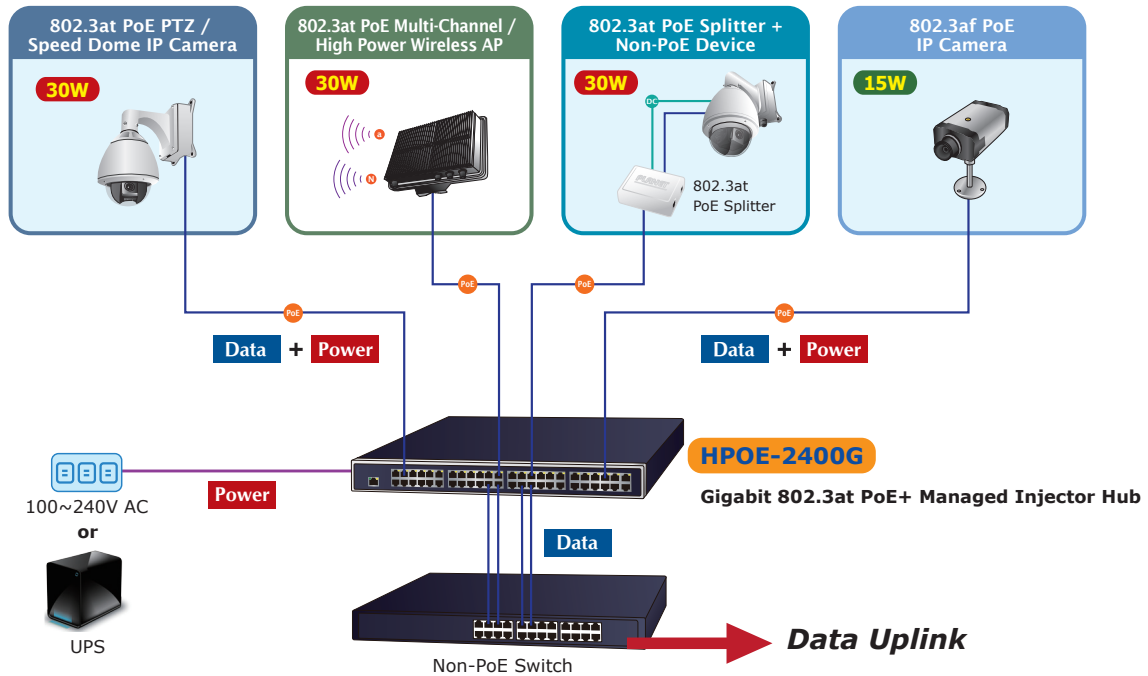
- Web interface for remote management
- Supports Network Time Protocol (NTP)
- Firmware upgrade through Web interface
- PLANET Smart Discovery utility automatically finds PLANET devices on the network
- SNMP trap for alarm notification of events
- System log/remote syslog

Hardware

- 19-inch rack mountable; 1U height
- Reset button for resetting to default setting and system reboot
- LED indicators for PoE ready and PoE activity
- LED indicators for power alert and fan alert
- FCC Part 15 Class A, CE

Quick and Easy PoE Network Deployment

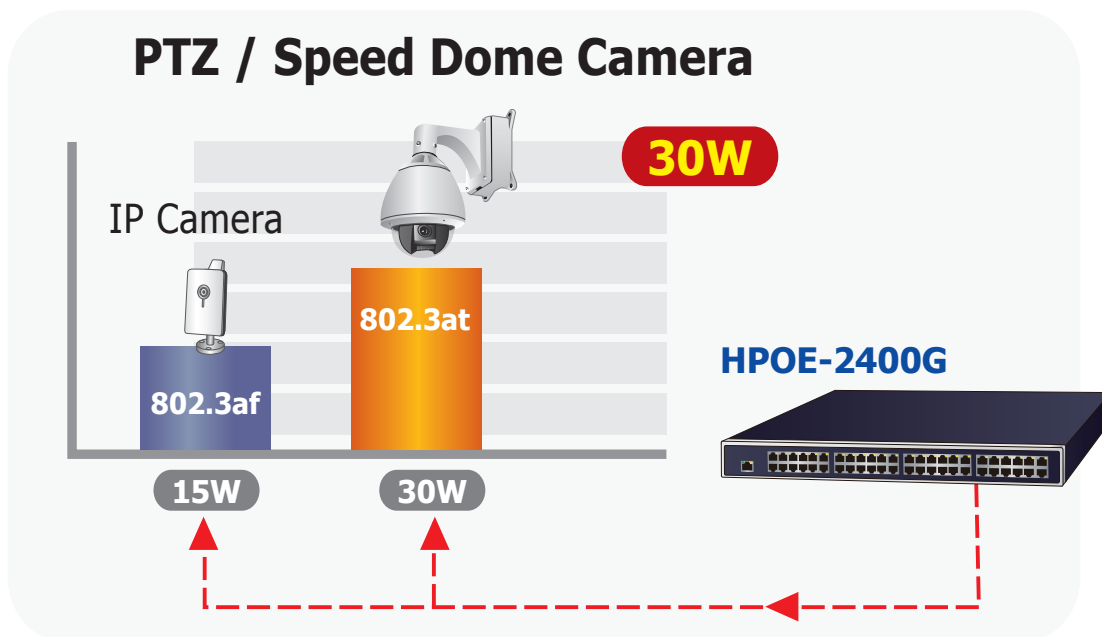
The HPOE-2400G is installed between a regular Ethernet Switch and the PDs. There are totally 48 RJ45 STP ports on the front panel of the HPOE-2400G, of which the 24 ports are on the lower stack functioned as "Data input" while the other 24 ports are on the upper stack functioned as "PoE (Data and Power) output". Both power and data are transferred simultaneously over the UTP cables to PDs without affecting the existing network performance and functions.



With data and Power over Ethernet from one unit, the HPOE-2400G can reduce power cable deployment and eliminate the need for dedicated electrical outlets on the wall, ceiling or any unreachable place.

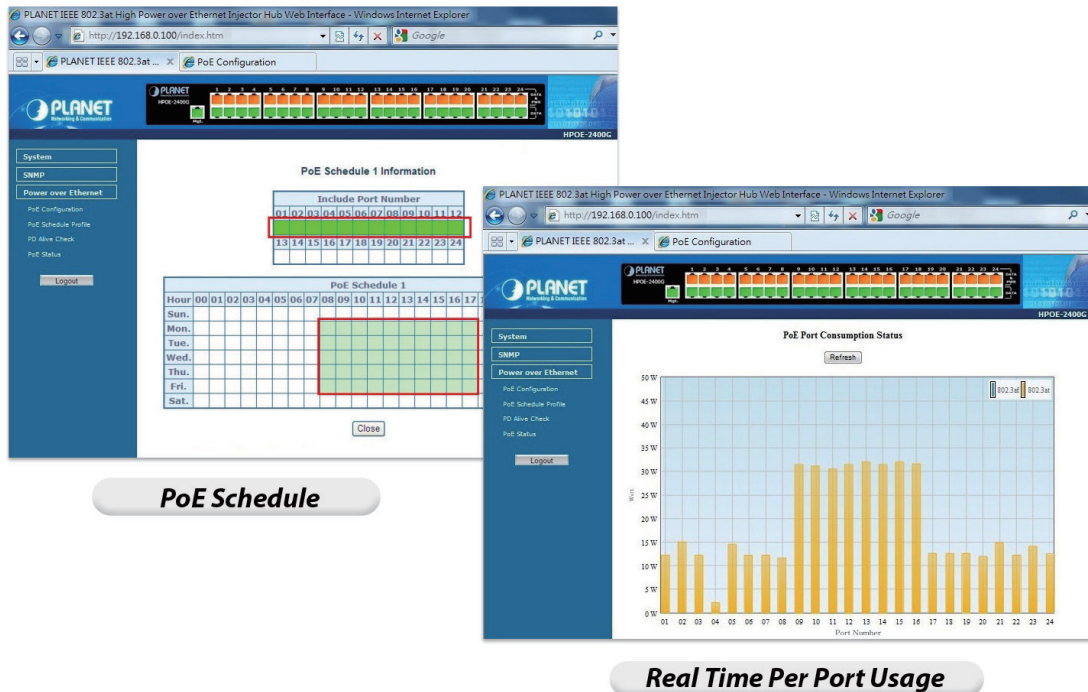
IEEE 802.3at PoE+ Standard Compliance

The PoE in-line power adopting the **IEEE 802.3at Power over Ethernet Plus** standard makes the HPOE-2400G able to deliver per port up to **36 watts** of power to each remote PoE compliant PD. It possesses double amount of power capability than the conventional 802.3af PoE and is an ideal solution to satisfy the growing demand for higher power consuming network PDs, such as PTZ (pan, tilt and zoom), speed dome network cameras, color touch-screen or video and voice over IP (VoIP) telephones, multi-channel 802.11ac wireless LAN access points and other network devices.



User-friendly Web Management Interface

To efficiently manage the PDs, the HPOE-2400G provides simple **Web management interface** in which administrators can control the system and PoE functions for PDs. It can automatically detect the power status of each port and show messages on its Web management interface. These features also provide users with a cost-effective way to manage the device via Internet whenever they are at work or at home.



PoE Schedule

Real Time Per Port Usage

Built-in Unique PoE Functions for Powered Device Management

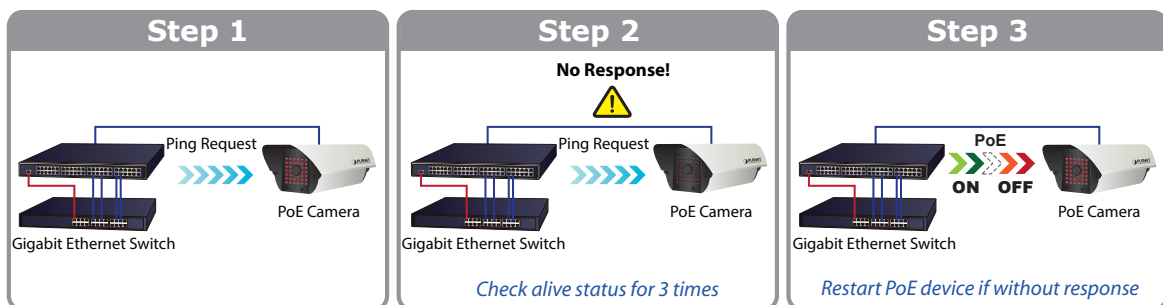
As it is the managed PoE Injector Hub for VoIP, wireless and surveillance networks, the HPOE-2400G features the following special PoE management functions:

- PoE schedule
- PD alive check
- Scheduled power recycling
- PoE usage monitoring
- Over temperature protection

Intelligent Powered Device Alive Check

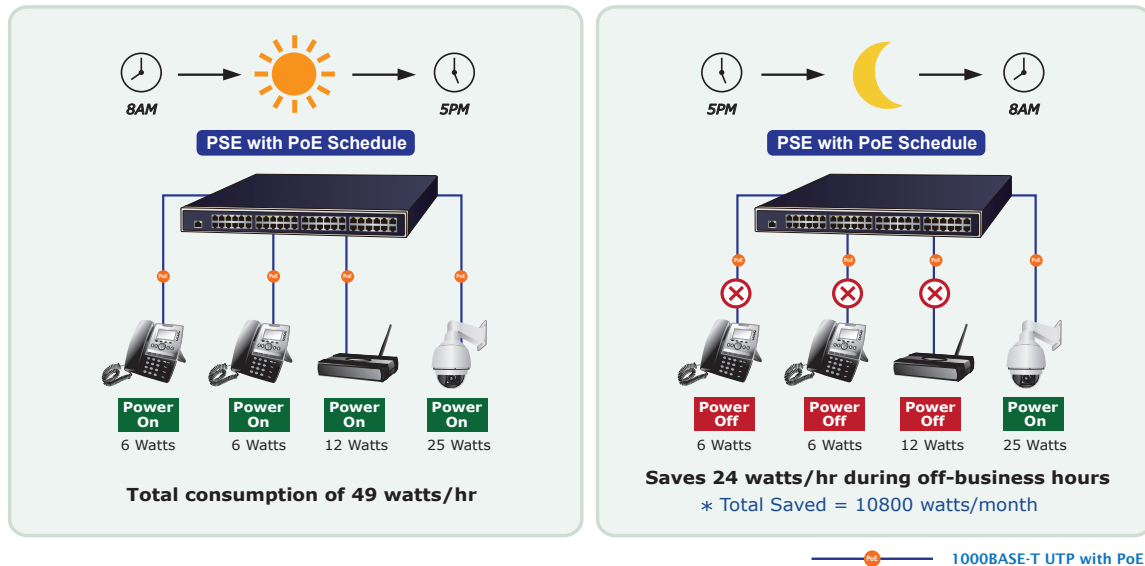
PLANET's Managed PoE products adopt not only Power over Ethernet technology, but also automated PD monitoring and real-time PoE status. The HPOE-2400G can be configured to monitor connected PD's status in real time via ping action through the uplinked Ethernet switch. Once the PD stops working and responding, the HPOE-2400G will recycle the PoE port power and bring the PD back to work. It also will greatly enhance the network reliability in that the PoE port will reset the PD power, thus reducing administrator's management burden.

PoE PD Alive Checking



PoE Schedule for Energy Saving

Under the trend of energy saving worldwide and contributing to environmental protection on the Earth, the HPOE-2400G can effectively control the power supply besides its capability of giving high watts power. The built-in “PoE schedule” function helps you to enable or disable PoE power feeding for each PoE port during specified time intervals and it is a powerful function to help SMBs or enterprises save power and money.



Advanced Power Management

To facilitate power management, the HPOE-2400G comes with powerful PoE management features such as **over temperature protection**, **usage threshold alert** and **auto power allocation** to prevent power budget overloading. The PoE power budget can be allocated by priorities or classification and sent alert event logs when power usage reaches the defined threshold.

PoE Usage Monitoring

Via the power usage chart in the web management interface, the HPOE-2400G enables the administrator to monitor the status of the power usage of the connected PDs in real time. Thus, it greatly enhances the management efficiency of the facilities.

High Power Budget for PoE Extension

With 36-watt PoE output capability, the HPOE-2400G can extend much longer distance by using PLANET PoE Extender for powering up the PoE PD which can be installed over more than 100 meters away. By daisy-chaining multiple PLANET PoE Extenders, it offers the great flexibility of doubling, tripling or quadrupling the distance of PoE network.

Smart Fan Design for Silent Operation

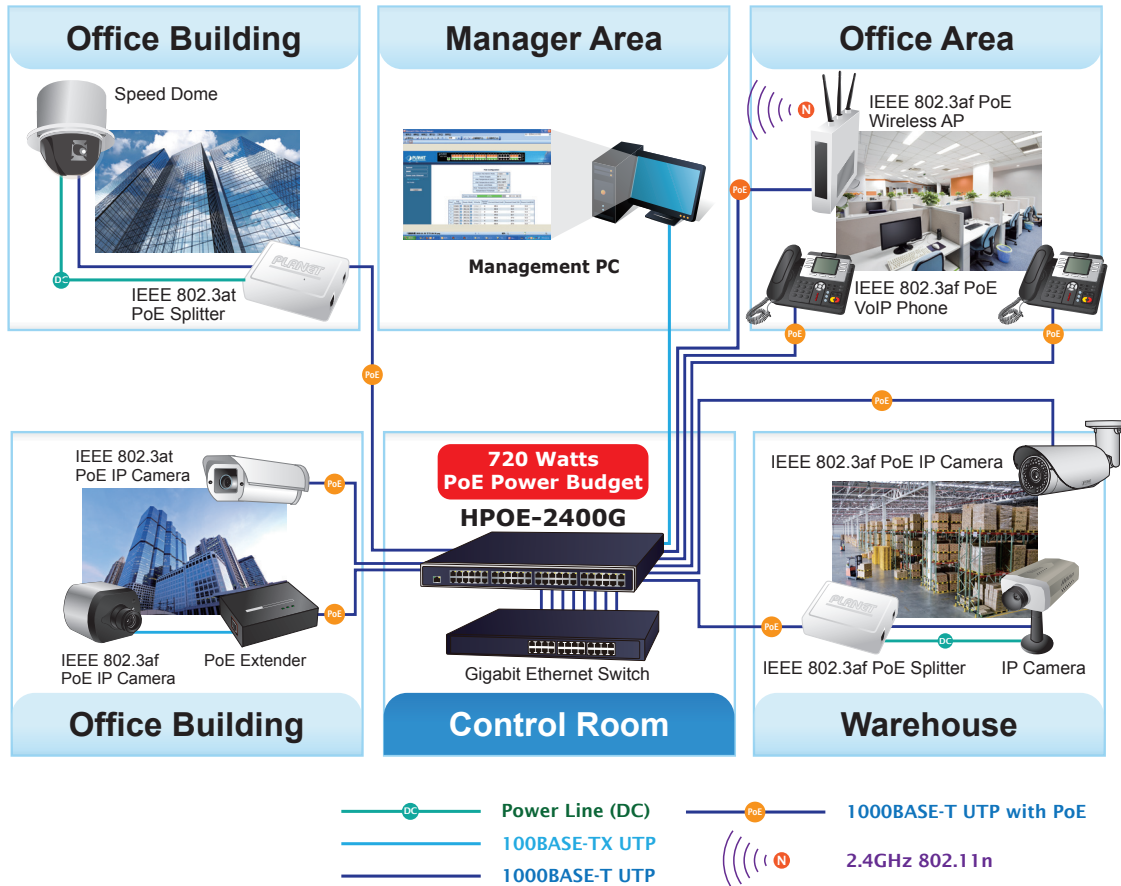
The HPOE-2400G features a low noise design and an effective ventilation system. It supports the smart fan technology that automatically controls the speed of the built-in fan to reduce noise and maintain the temperature of the PoE injector hub for optimal power output capability, **with low speed and high speed smart fan status display on web interface**. The HPOE-2400G is able to operate reliably, stably and quietly in any environment without affecting its performance.

Applications

Gigabit PoE+ Network Deployment

The HPOE-2400G provides the easiest way to power your Ethernet devices such as IP camera on the ceiling and the wireless access point installed on the top of the building. With 24 10/100/1000BASE-T Gigabit Ethernet ports, the HPOE-2400G supports 50-57V DC power for any remote IEEE 802.3af/802.3at powered device (PD).

To control the power system of your networking devices, the HPOE-2400G can directly co-work with PoE IP phone to build VoIP telephony network in the office. Furthermore, the HPOE-2400G can be directly connected to any third-party IEEE 802.3af/802.3at compliant devices installed 100 meters away.



Specifications

Product	HPOE-2400G	
Hardware		
Hardware Version	5	
Interface	"Data" Input Ports	24 x RJ45
	"Data + Power" Output Ports	24 x RJ45
	Management Port	1 x RJ45; 10/100/1000BASE-T, auto-negotiation, auto-MDI/MDIX
Data Rate	10/100/1000Mbps	
LED	System: SYS PWR x 1 (Green) PoE Failure x 1 (Red) Fan1 Failure x 1 (Red) Fan2 Failure x 1 (Red) Per PoE Port: PoE-in-use x 1 (Green) Management port x 2: 1000 (Green), 10/100 (Orange)	
Network Cable	10BASE-T: 4-pair UTP Cat5 up to 100m (328ft) 100BASE-TX: 4-pair UTP Cat5 up to 100m (328ft) 1000BASE-T: 4-pair UTP Cat5e, 6, up to 100m (328ft) EIA/TIA- 568 100-ohm STP (100m)	
Power Requirements	100-240V AC, 50/60 Hz, 8A	
Power Consumption	750 watts max./2559 BTU	
Ventilation	Fan x 2	
Dimensions (W x D x H)	440 x 300 x 44mm	
Power over Ethernet		
PoE Power Supply Type	Mid-span	
PoE Power Output	Per port DC 54V 30.8/15.4 watts	
Power Pin Assignment	4/5(+), 7/8(-)	
PoE Power Budget	720 watts@0~39 degrees C 670 watts@40~49 degrees C 620 watts@50 degrees C Auto power budget control by over temperature protection function	
Number of 802.3af PDs (Class 0, 1, 2, 3) can be powered	24	
Number of 802.3at PDs (Class 1, 2, 3) can be powered	24	
Number of 802.3at PDs (Class 0, 4) can be powered	24	
Management		
Management Interface	Web, PLANET Smart Discovery Lite	
PoE Management	Power limit by consumption and classification mode PoE admin mode Per port power schedule Per port power enable/disable Power feeding priority Over temperature protection Current per port usage and status Total power consumption	
Management Feature	System/management functions setup Web firmware upgrade SNMP trap for alarm notification of events	
Standards Conformance		
Regulatory Compliance	FCC, Part 15 Class A, CE	
Standards Compliance	IEEE 802.3 10BASE-T Ethernet IEEE 802.3u 100BASE-TX Fast Ethernet IEEE 802.3ab 1000BASE-T Gigabit Ethernet IEEE 802.3at Power over Ethernet Plus IEEE 802.3af Power over Ethernet RFC 768: UDP RFC 791: IP RFC 2068 HTTP RFC 1157: SNMP v1 RFC 1902: SNMP v2c RFC 5424: Syslog	
Environments		
Operating	Temperature: 0 ~ 50 degrees C Relative Humidity: 5 ~ 90% (non-condensing)	
Storage	Temperature: -10 ~ 70 degrees C Relative Humidity: 5 ~ 90% (non-condensing)	

Ordering Information

HPOE-2400G	24-Port Gigabit IEEE 802.3at PoE+ Managed Injector Hub (720 watts)
------------	--

Related PoE Products

POE-2400G	24-Port Gigabit IEEE 802.3at PoE+ Managed Injector Hub (440 watts)
POE-1200G	12-Port Gigabit IEEE 802.3at PoE+ Managed Injector Hub (220 watts)
HPOE-1200G	12-Port Gigabit IEEE 802.3at PoE+ Managed Injector Hub (360 watts)
POE-161S	IEEE 802.3at Gigabit Power over Ethernet Plus Splitter with 5V/12VDC output (10/100/1000Mbps)
POE-162S	IEEE 802.3at Gigabit Power over Ethernet Plus Splitter with 12V/24VDC output (10/100/1000Mbps)
IPOE-162S	Industrial IEEE 802.3at Gigabit High Power over Ethernet Splitter
POE-E101	IEEE 802.3af Power over Ethernet Extender
POE-E201	IEEE 802.3at Power over Gigabit Ethernet Extender
POE-E202	1-Port 802.3at PoE+ to 2-Port 802.3af/at Gigabit PoE Extender
LRP-101CH	1-Port 10/100TX PoE PD + 1-Port Coax Long Reach PoE Injector
LRP-101UH	1-Port 10/100TX PoE PD + 1-Port UTP Long Reach PoE Injector

PLANET Technology Corporation

11F., No.96, Minquan Rd., Xindian Dist., New Taipei City 231,
Taiwan (R.O.C.)

Tel: 886-2-2219-9518

Email: sales@planet.com.tw

Fax: 886-2-2219-9528

www.planet.com.tw



PLANET reserves the right to change specifications without prior notice. All brand names and trademarks are property of their respective owners. Copyright © 2019 PLANET Technology Corp. All rights reserved.

HPOE-2400G