



#24421

## QHD Webcam

High-quality 2K QHD webcam with auto focus, dual microphones and a privacy filter

### Key features

- High-quality video with a 2560x1440 (QHD) resolution at 30 frames per second
- Also supports 720p HD and 1080p Full HD resolutions
- Wide-angle glass lens with auto focus keeps you in focus at all times
- Two integrated microphones pick up your voice clearly
- The built-in privacy filter ensures nothing is visible when you don't want it to be
- Universal stand; place it on your desk or a monitor



### What's in the box

- Webcam
- User guide

### System requirements

- Windows 7 / 8 / 10
- Mac OS X (10.15 or higher)
- USB port



## Call with Quality Sound and Video

This webcam is built to deliver pixel-clear video and disturbance-free audio. Two integrated microphones pick up the speaker's voice clearly and allow you to take meetings in QHD resolution (2560x1440) at 30 frames per second. The webcam also supports 720p HD and 1080p Full HD resolutions, ensuring compatibility with any device.

## Wide Angle and Autofocus

With a wide-angle glass lens, the TW-250 is well suited to having group meetings. The 80-degree angle covers a wider area than a standard lens, so more than one person can fit in the video frame without moving or adjusting the camera position, while autofocus ensures sharp visuals at all times.



## Privacy Is Key

Take video calls with perfect peace of mind; with the TW-250's innovative privacy filter, you can rest assured that you can safeguard your privacy at any time. Simply slide the filter over the camera when you want to be absolutely sure that nothing is visible.

## Plug & Play Features

The Trust TW-250 is the trusted tool for communication with colleagues, partners and clients worldwide and can be used with all the major video-conference software such as Skype, Teams and Zoom. Shock-free video is guaranteed even in a (home) office setup; with the included universal stand the camera can easily be attached to your monitor or placed on your desk, or mounted on a tri-pod stand (not included) using the 1/4" thread. An LED indicator at the front of the camera shows the status of the webcam.



**GENERAL**

<b>Plug &amp; play</b>	True	<b>Driver needed</b>	False
<b>Mounting type</b>	Clip	<b>Height of main product (in mm)</b>	50 mm
<b>Width of main product (in mm)</b>	90 mm	<b>Depth of main product (in mm)</b>	65 mm
<b>Total weight</b>	127 g	<b>Weight of main unit</b>	85 g

**LIGHTING**

<b>Lights</b>	False
---------------	-------

**MICROPHONE**

<b>Pick-up pattern</b>	Omnidirectional
------------------------	-----------------

**CONNECTIVITY**

<b>USB version</b>	2.0
--------------------	-----

**IMAGING**

<b>Sensor resolution</b>	2560x1440	<b>Max Framerate</b>	30 fps
<b>Still image resolution</b>	2560x1440	<b>Video resolution</b>	2560x1440
<b>Snapshot button</b>	False	<b>Automatic white balance</b>	True
<b>Face tracking</b>	False	<b>Focus type</b>	Auto focus
<b>Privacy mode</b>	True		

**HEADPHONE**

<b>Sensitivity</b>	56 dB
--------------------	-------

**AUDIO**

<b>Microphone built-in</b>	True
----------------------------	------

**COMPATIBILITY**

<b>Compatible Device Types</b>	Laptop, pc	<b>Compatible Software Platforms</b>	Mac OS, Windows
--------------------------------	------------	--------------------------------------	-----------------

**COLOUR VERSIONS**

**TW-250 QHD Webcam**  
24421



**Taxon QHD Webcam**  
24228





PRODUCT VISUAL 1



PRODUCT ESHOT 1



PRODUCT VISUAL 2



PRODUCT VISUAL 3



PRODUCT VISUAL 4



PRODUCT FRONT 1



PRODUCT SIDE 1



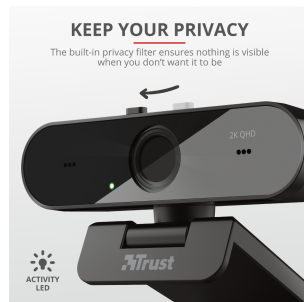
PRODUCT EXTRA 1



PACKAGE VISUAL 1



PRODUCT PICTORIAL 1



PRODUCT PICTORIAL 2



PRODUCT PICTORIAL 3