



VOXICON IN-EAR PRO FKA-H200

Bluetooth V5.0
TRUE WIRELESS EARBUDS

Easy to Use

The earbuds will sync and pair with your phone every time you remove them from the charging box. By adding them back in to the box, they will automatically shut off and charge.



Taking it out from charging box, the earbuds will automatically pairing and automatically connect back to the last Bluetooth device.

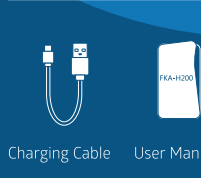
Note: You can also press the multi-function button to power-on, enter pairing mode and power off.



Usage



Package



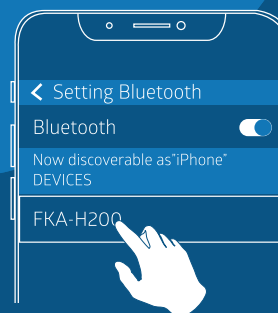
Charging Cable User Manual

How to Pair

Turn on the Bluetooth function of your phone, and click to connect the earbuds.



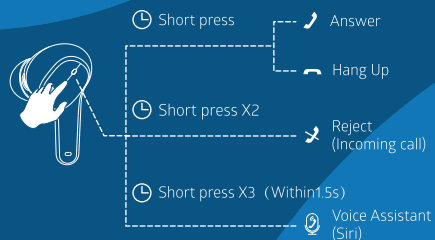
< 1m



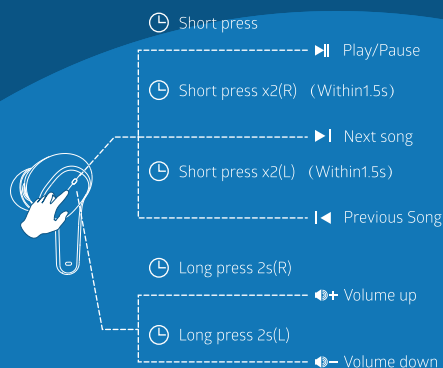
VOXICON IN-EAR PRO FKA-H200



Answer/Hang Up/Reject/Voice Assistant(Siri)



Music control



Charge Battery



Charge the earbuds



White light's on (charging)
White light's out (fully charged)



Charge the box



Note:
- white light flashes continuously (charging)
- white light on (fully charged)

Warning

The earbuds can only be charged with a 5V charger. Using a more powerful charger, may cause overheating.

Please fully charge before usage and ensure that it is charged at least every 3 months.

