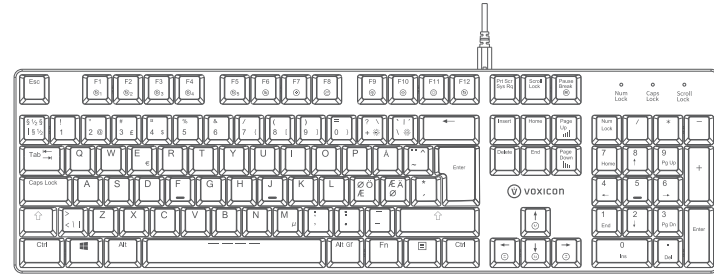




DK-GR8-9
VOXICON KEYBOARD
MANUAL

Basic Information

Thank you for purchasing your new VOXICON Low Profile Mechanical Keyboard. We recommend that you spend some time reading this instruction manual. Read all the safety instructions and keep this instruction manual for future reference.



Specifications

Layout: Nordic, 105 keys
Material: Aluminum Alloy top + ABS
Backlighting: Blue LED
Switch Type: Kailh Red
Operating Force: 45 ±10gf
Travel(Total): 3.0mm
Rated Lifespan: 50 millions keystroke per key
Key Rollover: N-Key Rollover Anti-Ghosting
Dimensions: 436 x 126 x 22.8mm
Weight: 650 ±20g
Connectivity: USB 2.0
Cable length: 1.8m, detachable

Pack Contents

Mechanical Keyboard 1pc
Manual 1pc
Micro USB Cable 1pc

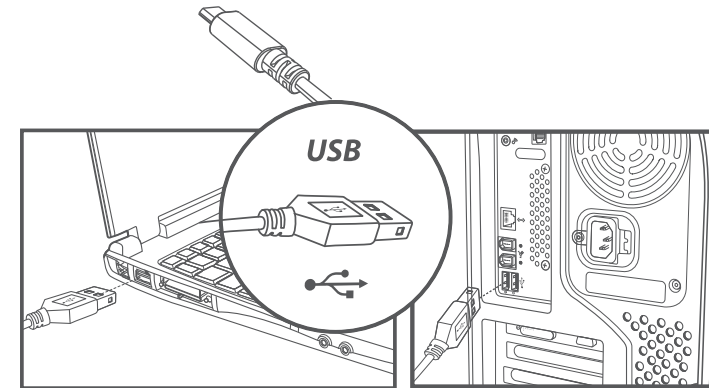
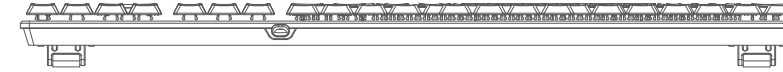
System Requirements

Microsoft® Windows® XP/Vista™/7/8/10
Available USB port

01

Basic Information

Guidance for first installation



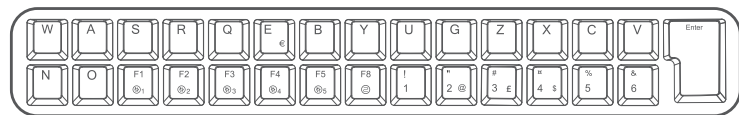
02

Voxicon
Box 1194
SE-131 27 Nacka Strand, Sweden
Made in China

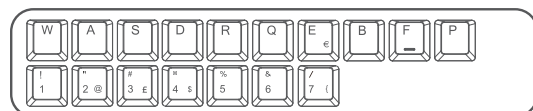
Basic Information

LED Backlight

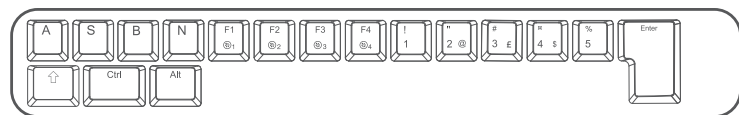
FN + F1 Default Backlight pattern 1



FN + F2 Default Backlight pattern 2



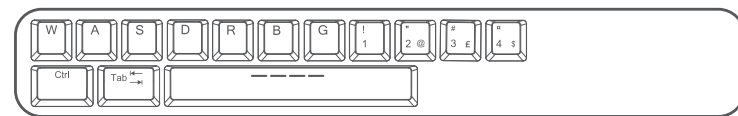
FN + F3 Default Backlight pattern 3



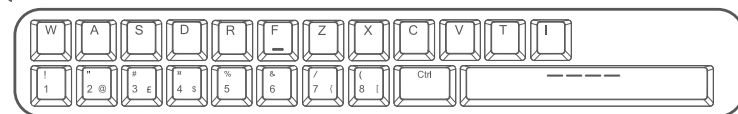
03

Basic Information

FN + F4 Default Backlight pattern 4



FN + F5 Default Backlight pattern 5



Customizable backlighting:

The VOXICON Low Profile Mechanical Keyboard provides 5 sets of memory, allowing you to create your own customizing backlighting mode.



Press F1, F2, F3, F4 or F5 to start recording. Press FN + F12 to stop recording. If no change is made within 30 seconds in the recording mode, the recording session will be terminated without saving.

04

Basic Information

LED Backlighting modes

- FN + F6 X 1 Wave
- FN + F6 X 2 Full Flowing
- FN + F6 X 3 Rotation
- FN + F7 Ripple
- FN + F8 X 1 Snake
- FN + F8 X 2 Line Marquee
- FN + F8 X 3 Slant Flowing
- FN + F9 X 1 Single key on when pressed #1
- FN + F9 X 2 Raindrop
- FN + F9 X 3 Single key on when pressed #2
- FN + F10 Pulsating
- FN + F11 LED full on
- FN + (3 seconds) Reset to default

LED Backlighting Control

- ↑ Increase Brightness
- ↓ Decrease Brightness
- Page Up Speed Up
- Page Down Speed Down
- FN + ← Change backlight direction to left
- FN + → Change backlight direction to right
- FN + ↑ Change backlight direction to up
- FN + ↓ Change backlight direction to down

This symbol on the product or in the instructions means that your electrical and electronic equipment should be disposed at the end of its life separately from your household waste. There are separate collection systems for recycling in the EU. For more information, please contact the local authority or your retailer where you purchased the product.

05