

# LEGION T530

## TOWER GAMING, REFINED.

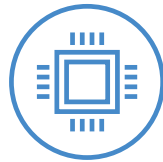
Ready to see tower gaming mastered? Meet the Lenovo™ Legion T530 Tower, a 28 liter gaming tower redesigned from the ground up to deliver a bold new look that houses the latest Intel® gaming processors, discrete graphics, DDR4 memory, PCIe SSD storage and dual-channel cooling, all with external red system lighting. This 28 liter desktop was designed to be explosively powerful, and it delivers.

### WHY YOU SHOULD BUY THE LENOVO LEGION T530



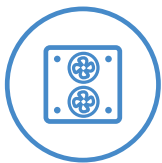
#### An evolution of style

A refined front grill accenting a redesigned 28 liter Raven Black Chassis with red system lighting come standard on our T530.



#### 60 FPS and beyond

Raw gaming performance is delivered on our T530 via up to 8<sup>th</sup> Generation Intel® Core™ processors, NVIDIA® GeForce® graphics, DDR4 memory, PCIe SSD storage, and more.



#### Reengineered inside...

The Lenovo Legion T530 was engineered to eliminate heat via its dual-channel thermal system for an undeniably cool and quiet gaming experience.



#### ...And out

Our T530 features a tool-free upgrade system with integrated upgrade-handle and interior cable management for a truly future-proof gaming tower.



[WWW.LENOVO.COM](http://WWW.LENOVO.COM)



Lenovo™

# LEGION T530

## SPECIFICATIONS

Lenovo Legion T530-28ICB\*

### PERFORMANCE

#### Processor

8<sup>th</sup> Generation Intel® Core™ i7-8700 Processor  
8<sup>th</sup> Generation Intel® Core™ i5-8400 Processor  
8<sup>th</sup> Generation Intel® Core™ i3-8100 Processor

#### Operating System

Windows 10 Pro  
Windows 10 Home

#### Graphics

NVIDIA® GeForce® GTX 1060; 6 GB  
NVIDIA® GeForce® GTX 1050 Ti; 4 GB  
NVIDIA® GeForce® GTX 1050; 2 GB  
AMD Radeon™ RX 570; 4 GB  
AMD Radeon™ RX 560; 4 GB (18Q3)

#### Memory

Up to 32 GB DDR4

#### Storage

Up to 256 GB PCIe SSD and 2 TB HDD

#### Audio

Dolby Atmos® Effect

#### PSU

450W - ES PSU  
280W - ES PSU

### DESIGN

#### Volume

28 L

#### Dimensions (W x D x H) With Bezel

(mm) : 184.5 x 456 x 440  
(inches) : 7.26" x 17.95" x 17.32"

#### Weight

Starting at 24.2 lbs (11 kg)

#### VR Ready

NVIDIA® VR Ready

#### Color

Raven Black

### CONNECTIVITY

#### Input/Output (I/O) Ports<sup>1</sup>

##### Top Ports

2 x USB 3.0  
1 x Headset  
1 x Microphone-In

##### Rear Ports

2 x USB 3.1 Gen 2  
2 x USB 3.0  
2 x USB 2.0  
1 x HDMI™  
1 x RJ45  
1 x Audio-Out

#### GFX Ports

Depends on GFX Define

### PRELOADED SOFTWARE

#### For ROW

- Lenovo Vantage
- McAfee LiveSafe™
- Microsoft Office Trial<sup>2</sup>
- Microsoft LinkedIn
- PowerDVD/Power2Go

#### For PRC

- Lenovo PC Manager
- Lenovo Antivirus
- Microsoft Office 2016 Home and Student
- Microsoft LinkedIn



<sup>1</sup> Display output defined by graphics card selection. Rear port selection may vary.

<sup>2</sup> Except Japan, India and China.

## LENOVO SERVICES

#### Warranty Upgrades - On-site / In-Home Service

Maximizes PC uptime and productivity by providing convenient, fast repair services in your own home.

#### Accidental Damage Protection

Avoid the hassles of unexpected repair costs. Provides coverage for non-warranted damage incurred under normal operating conditions, such as minor spills, drops or damage to the integrated screen.

#### Warranty Extensions (1-to-3 Years Total Duration)

This fixed-term, fixed-cost service helps accurately budget for PC expenses, protect your valuable investment and potentially lower the cost of ownership over time.

## OPTIONS & ACCESSORIES



Lenovo Y Gaming Optical Mouse

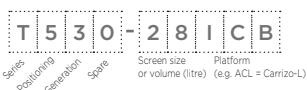


Lenovo Y Gaming Mechanical Switch Keyboard



Lenovo Y Gaming Stereo Headset

\* Example of Lenovo Legion catalogue naming convention



#### Intel® platform codes

Haswell H81: IHH, BroadWell U: IBU, Skylake Z170: ISZ, Skylake B150: ISB, Kabylake: IKL, Skylake H110/H170: ISH, Skylake U: ISU, Apollo Lake: IAP, Coffee Lake B360: ICB, Coffee Lake H: ICH, Coffee Lake Z370 Overclock: ICO



WWW.LENOVO.COM

Lenovo reserves the right to alter product offerings and specifications at any time, without notice. Lenovo makes every effort to ensure accuracy of all information but is not liable or responsible for any editorial, photographic or typographic errors. All images are for illustration purposes only. For full Lenovo product, service and warranty specifications visit [www.lenovo.com](http://www.lenovo.com). Lenovo makes no representations or warranties regarding third party products or services. **Trademarks:** The following are trademarks or registered trademarks of Lenovo: Lenovo, the Lenovo logo, ideapad, IdeaCentre, yoga and yoga home. Microsoft, Windows and Vista are registered trademarks of Microsoft Corporation. Ultrabook, Celeron, Celeron Inside, Core Inside, Intel, Intel Logo, Intel Atom, Intel Atom Inside, Intel Core, Intel Inside, Intel Inside Logo, Intel vPro, Itanium, Itanium Inside, Pentium, Pentium Inside, vPro Inside, Xeon, Xeon Phi, and Xeon Inside are trademarks of Intel Corporation in the U.S. and/or other countries. Other company, product and service names may be trademarks or service marks of others. Visit [www.lenovo.com/lenovo/us/en/safecomp/](http://www.lenovo.com/lenovo/us/en/safecomp/) periodically for the latest information on safe and effective computing. ©2018 Lenovo. All rights reserved.



Lenovo™