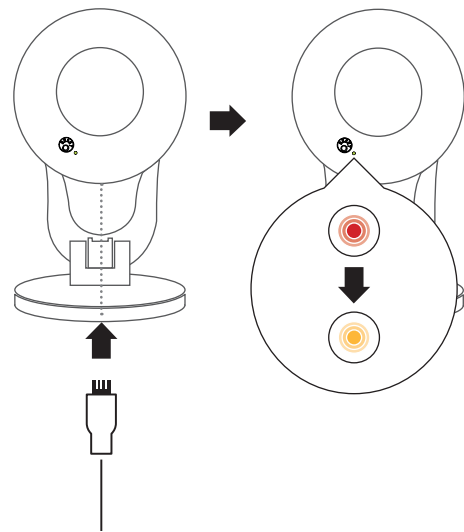


1



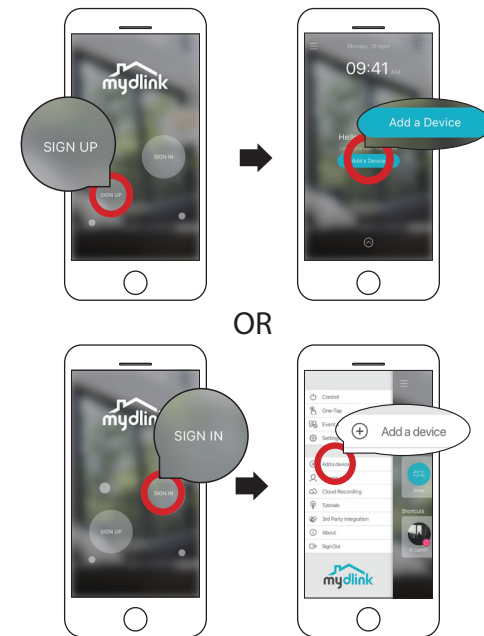
Plug the included USB Power Adapter into the back of the camera. Wait until the LED changes from red to blinking orange.

2



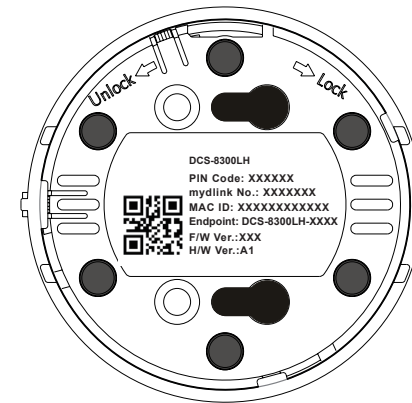
To download and install the **mydlink** app on your mobile device, scan the QR code above for your Android or iOS device.

3



New users: Tap **Sign Up** to register for a mydlink account, then tap **Add a Device** to install your camera.
Existing users: Sign In using your mydlink account and tap the icon at the top left, then tap **Add a Device** to start the setup wizard.

4



When asked to scan the QR code, use the code found on the back of the camera.



Minimum Requirements

To install this product, you will need:

- 802.11g/n wireless router
- Internet connection
- A mobile device with Bluetooth 4.0 is required for setup.
- The latest version of the mydlink app from your operating system's application store.
- The mydlink app is available for iPhone, iPad and Android™ devices. Please refer to the mobile app's store page to check whether your device is compatible.
- An e-mail account (required to register for mydlink service)



Frequently Asked Questions

1. What is a mydlink account?

To use your mydlink device, you will need to register and sign in to a mydlink account. Once logged in, you can access your mydlink devices from anywhere via the Internet and enable features such as cloud recording for cameras.

2. What can I do if my camera is not working properly?

First, reset the camera and try setting the camera up again.

To make sure your hardware is installed correctly, make sure that:

- the power LED is green
 - your Internet connection is working
 - your router's wireless is turned on
 - your router supports UPnP*
 - both your mobile device and camera have a working Internet connection
- If your camera is still not working, check your router and make sure it has the latest firmware.

3. What can I do if I forget my camera password?

If you forget your password, you will need to reset your camera. This process will change all your settings back to the factory defaults.

To reset your camera, please use an unfolded paperclip to press and hold the Reset button for at least 10 seconds while your camera is plugged in. Repeat the setup procedure through the app after the camera reboots and the LED is blinking orange.

4. Why is there a white haze when viewing in night vision mode?

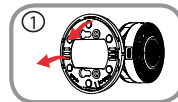
When viewing in night vision mode, the IR lights on your camera may be reflecting off a nearby surface. Try repositioning your camera to avoid glare from IR LEDs.



Mounting instructions

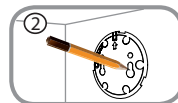
Step 1:

Rotate the baseplate counter-clockwise and remove it.



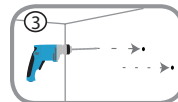
Step 2:

Place the baseplate where you want to position the camera and use a pencil to mark the holes. You can use the lower holes for a removable installation, or the top holes for a fixed one. Make sure that the arrow on the baseplate is pointing up.



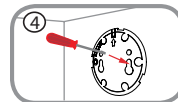
Step 3:

Depending on the material of the wall or ceiling, use proper tools to drill holes 25mm deep with a 6mm drill bit where you marked. If the wall is made out of concrete, drill the holes first, then insert the plastic anchors to support the screws.



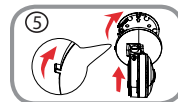
Step 4:

Place the baseplate over the holes that are in the wall. Make sure to align the baseplate holes with the holes in the wall. Use the supplied screws to attach the baseplate to the surface of the wall.



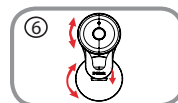
Step 5:

Place the camera over the baseplate with the alignment nub pointing left, then attach the camera by rotating it until the alignment nub points up.



Step 6:

Adjust the angle and rotation of the camera as desired. You can also rotate the camera on the baseplate approximately 45° to the right or left.



Support

Need help setting up?

Watch the video for step-by-step instructions:



dlinksetup.com

For manuals and software updates, visit:
support.dlink.com

For technical support, call:
1-877-453-5465



Notice

This device complies with Part 15 of the FCC Rules. Operation is subject to the following two conditions:

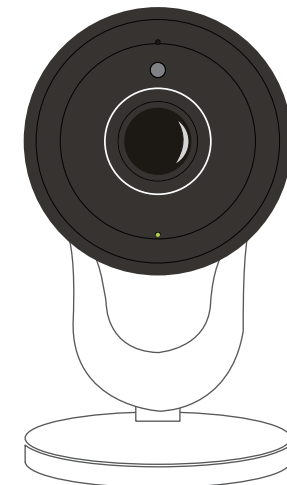
- (1) this device may not cause harmful interference, and
- (2) this device must accept any interference received, including interference that may cause undesired operation.

Version 1.00 (US)_90x130
January 17 2018

Copyright ©2018 All rights reserved. D-Link and the D-Link logo are registered trademarks of D-Link Corporation or its subsidiaries. Product specifications, size and shape are subject to change without notice, and actual product appearance may differ from that depicted on the packaging. Visit dlink.com for more details.

Full HD Wi-Fi Camera

Quick Start Guide



DCS-8300LH

