

Document Scanners

ScanSnap N1800

network



ScanSnap
Color Image Scanner
N1800
Network Scanner







- The network scanner that links with cloud services
- 50 page ADF with touchscreen and GUI keyboard
- Fast scanning speed with advanced image processing (20 ppm / 40 ipm @ 300 dpi)
- Mixed batch scanning support with sizes up to A3 (carrier-sheet)
- **Intelligent functions supported:** Intelligent Index, Crop & Deskew, Auto colour and page size detection

Equipped with Network Features
to Make Information Sharing Easier than Ever

shaping tomorrow with you

FUJITSU

ScanSnap N1800

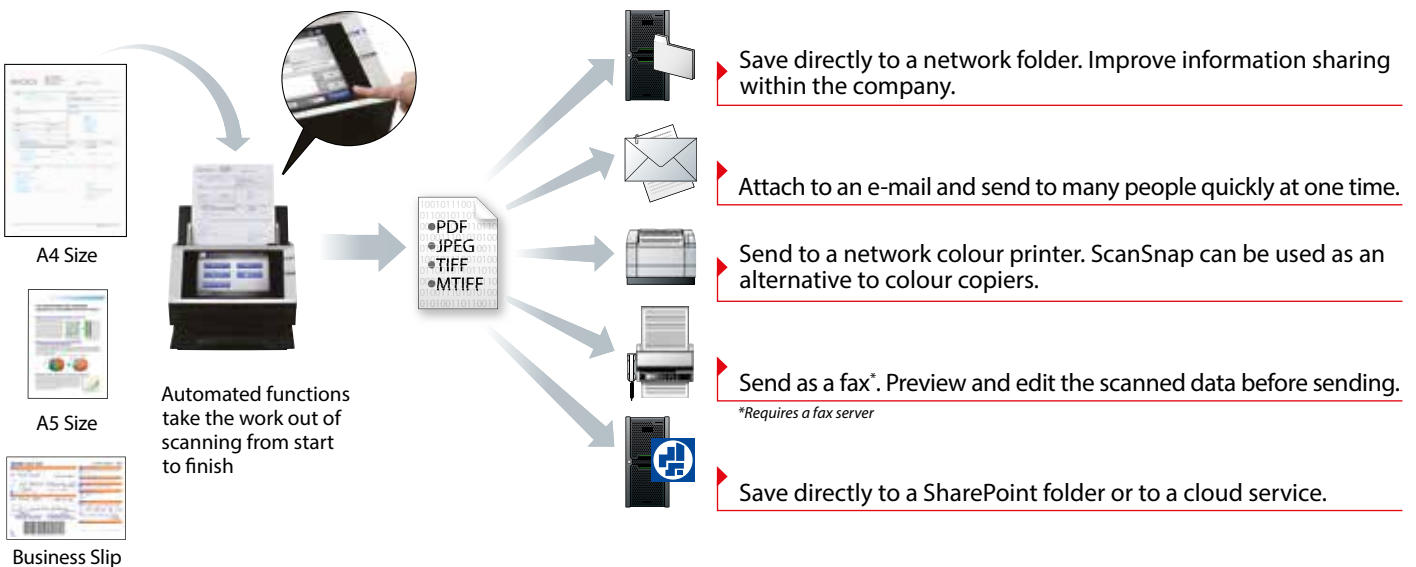
N1800	50 Sheets	600 dpi	Simplex 20 ppm	Duplex 40 ipm
				

Introducing a network imaging scanner designed to speedily digitize documents and facilitate the paperwork of everyone in the office whether directly into a company's business processes, local network or into the cloud.

Directly link ScanSnap to a network and digitize documents into processed data for e-mails, faxes, network storage and much more – all with remarkable ease in a compact footprint and with intelligent functions to minimise operator involvement.

Easily digitize and share document with just 'One Push'

Whether your documents are monochrome or colour, large or small, or a combination of those, just press the Scan button on the N1800 touch panel to convert them into digital data. With the scanner connected to a network, you can directly save and share the digital data through a network resource, including a cloud service.



Automated functions take the work out of scanning from start to finish

Advanced automated functions ensure the N1800 digitizes your documents with remarkable precision and efficiency. Produce beautiful scans quickly without barely lifting a finger.

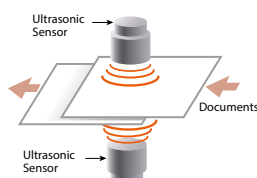
- ▶ Marker Index*
- ▶ Paper Size Detection
- ▶ Colour Detection
- ▶ Blank Page Removal
- ▶ Auto Deskew
- ▶ Auto Orientation



*This function detects words marked with a highlighter and embeds them as keywords in PDF files.

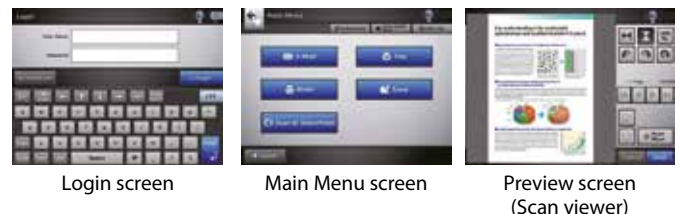
Fast and accurate scanning

The N1800 delivers scanning speeds of up to 20 ppm / 40 ipm (Colour, A4 size at 200 and 300 dpi). Very accurate ultrasonic sensors detect when overlapping pages (multifeed) enter the imaging device.



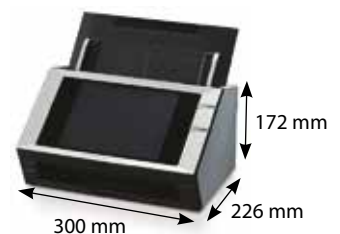
On-board touch panel makes operating ScanSnap truly easy

The N1800 features a large, intuitive touch panel, which utilizes 'One Push' interface, so anyone can operate the imaging device with ease.



Set up at the office

The N1800 has a compact design, making it easy to place around the office. It can be set up by following the Installation Wizard on the intuitive touch panel, which helps you configure system settings, network settings and more.





Serious security features

The N1800 comes armed with advanced security features to ensure safe and secure operation among multiple users.

- **Login authentication strictly controls what users can do with the scanner.**
- **Scanned data can be output as password-locked PDF files.**
- **Advanced security measures guard scanned data from prying eyes.**

Encryption

Scanned data is encrypted and temporarily stored in the scanner while it is being processed for e-mail, faxing, printing or storage. Even if an unauthorised party analyzes the internal memory, they would not be able to decipher the data.

Scanned image data deletion

The N1800 automatically deletes image data from its internal memory after the processed data is sent to an e-mail, fax, printer or a network folder. Even if an error results in data remaining in the memory, the data is automatically erased the next time the scanner is started up.

Secure initialise

When the N1800 is initialised, free regions of the internal memory can be overwritten with completely random, meaningless data. As an added security measure, a new encryption key is generated after user information is deleted. All of this ensures that no trace of old user data can be retrieved from open memory.

Customise it to the needs of each user

Administrators can customise the touch panel menu and scan settings of the N1800 to suit the work of a specific user or user group registered to the scanner. This way people who log on to the scanner will always find it optimized for them and easy to use.

For details please visit the ScanSnap homepage.



A Customized Job Menu

Versatile range of use from SOHO to large enterprises

Connect with a variety of server types

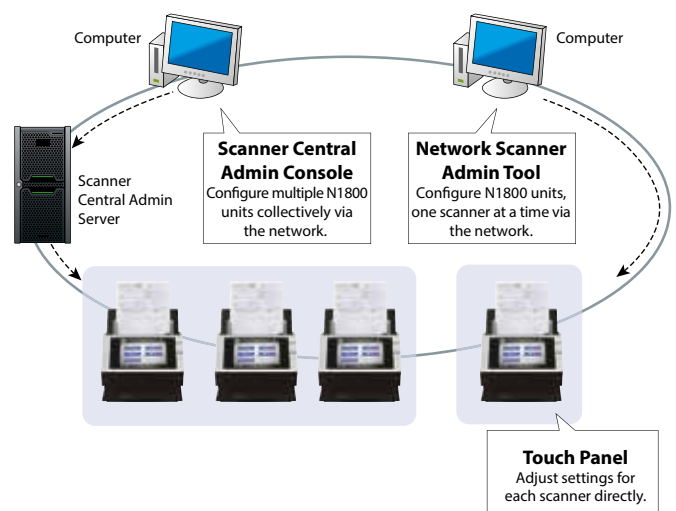
The N1800 satisfies the digitizing needs of small networks that use a file server and e-mail server. It's also right at home with more complex LDAP/LDAPS authentication-based networks, integrated with Microsoft Exchange Server, SharePoint and other application hubs.

Develop applications with the N1800 SDK*

An SDK is available for the N1800 to develop applications (called Add-ins) and to expand the device's functions to meet the needs of your business.

*The SDK (software development kit) allows for the development of scanner controlled workplace applications.

- **Set up and manage multiple scanner units at one time**
The N1800 offers 'Central Administration' and 'Job' functions that allow you to collectively configure and manage a vast network of N1800 units with ease from a single console.
- **Network Scanner Admin Tool**
The Admin Tool function allows you to adjust running environment settings one scanner at a time.
- **Scanner Central Admin Console / Scanner Central Admin Server**
Collectively monitor and manage scanner usage, setting and much more for multiple N1800 units, through the Scanner Central Admin Server function.



ScanSnap N1800 Specifications



Model	ScanSnap N1800
Scanner type	ADF (Automatic Document Feeder)
Scanning modes	Colour, grayscale, monochrome, automatic (colour / grayscale / monochrome detection)
Image sensor type	Colour CCD (Charge-coupled device) x 2 (front x 1, back x 1)
Light source	White cold cathode discharge lamp x 2 (front x 1, back x 1)
Document size	Maximum: Legal / Minimum: A8 portrait
Paper weight	52 to 127 g/m ²
Scanning speed (A4 portrait)	Simplex: 20 ppm (200, 300 dpi) / Duplex: 40 ipm (200, 300 dpi)
Paper chute capacity	50 sheets
Expected daily volume	400-2000 sheets / day
Optical resolution	600 dpi
Output resolution colour (24 bit) / Grayscale (8 bit) / Monochrome (1 bit)	150 / 200 / 300 / 600 dpi
Output methods	Save image data to network folder / FTP server Send image data by E-mail Print (sends image data to printer server) Send image data by FAX (sends image data to FAX server in Email format) Save image data to SharePoint folder
Output file formats	PDF (searchable PDFs, Password protected PDFs, PDF compression, Marker Index), JPEG, TIFF (single, multi-page), page output in reverse order
Authentication	User authentication: ActiveDirectory or OpenLDAP (for Solaris or Linux), Standalone authentication Folder authentication: ActiveDirectory, OpenLDAP (for Solaris or Linux)
Network interface	10BASE-T, 100BASE-TX
Network protocols	TCP/IP, DHCP, SMTP, SMB, LDAP, NTP, FTP, HTTP
Power requirements	AC 100 to 240 V ± 10%
Power consumption	Operating 50W or less (Sleep mode: 15W or less, Off mode: 0.5W or less)
Operating environment	Temperature: 5 to 35°C (41 to 95°F) Relative humidity: 20 to 80% (Non-condensing)
Dimensions (W x D x H)	300 x 226 x 172 mm
Weight	6 kg
Environmental compatibility	ENERGY STAR compliant / ROHS
Display	LCD 8.4 inch XGA (1024 x 768 pixels) TFT colour monitor
Keyboard	Touch panel Analog resistive touch panel Software keyboard
Others	Multi-feed detection Supported (standard) ultrasonic multi-feed detection sensor Long paper scanning 3048 mm



ENERGY STAR® compliant

Options	Part number	Remarks
ScanSnap Carrier Sheet	PA3360-0013	Each pack contains 5 carrier sheets, It is recommended that each carrier sheet should be replaced after it has been used for 500 scans.

Consumables	Part number	Remarks
Consumable Kit	CON-3586-013A	1 x Pick Roller - Lifetime: Every 100,000 sheets or one year. These rollers feed documents into the scanner. 2 x Pad Assembly - Lifetime: Every 50,000 sheets or one year. These rubber parts separate documents.
Cleaning Kit	SC-CLE-WGD	72 x F1 Cleaning Fluid Impregnated Cleaning Wipes

Included items	
	ADF paper chute / AC cable / AC adapter / LAN cable (straight-through) / Carrier Sheet / Getting Started

All names, manufacturer names, brand and product designations are subject to special trademark rights and are manufacturer's trademarks and/or registered brands of their respective owners. All indications are non-binding. Technical data is subject to change without prior notification.

PFU (EMEA) Limited
Hayes Park Central
Hayes End Road, Hayes
Middlesex UB4 8FE
United Kingdom

Tel: +44 (0)20 8573 4444

PFU (EMEA) Limited
Frankfurter Ring 211
80807 Munich
Germany

Tel: +49 (0)89 32378 0

PFU (EMEA) Limited
Via Nazario Sauro, 38
20099 Sesto San Giovanni (MI)
Italy

Tel: +39 02 26294 1

PFU (EMEA) Limited
Camino Cerro de los Gamos, 1
28224 Pozuelo de Alarcón
Madrid
Spain

Tel: +34 91 784 90 00

<http://emea.fujitsu.com/scanners>