

EAT•N

Powerware

**Powerware® eNotify
Quick Start Guide**

Checklist

1. Verify that all of the following items are available:

- ConnectUPS™ Web/SNMP Card package
- Environmental Monitoring Probe (EMP) package
- Phillips screwdriver
- Microsoft® Windows® operating system
- Available serial port (RS-232)
- HyperTerminal® (ships with Windows)

2. Contact your local network administrator for the following mandatory network settings:

- IP Address (static address*) . . .
- Gateway IP Address . . .
- Network Mask IP Address . . .

*If you are setting up the ConnectUPS Card in a DHCP environment, the network administrator must set up the DHCP server to provide a static address each time the card makes a DHCP request. Provide the network administrator with the card's MAC address (on the bottom of the card):

- MAC address

3. If you need e-mail functionality, obtain the following network settings (either SMTP only or DNS and Host Name):

- SMTP (mail server) IP Address . . .
- DNS (name server) IP Address . . .
- Host Name

4. List up to six contacts to receive automatic notification for UPS events. List each contact's Name, Phone Number, E-Mail Address, and reports desired in order of Priority. For details, see Step 8 on page 12.

-
-
-
-
-
-

Section 1

Install the Card

The hot-swappable ConnectUPS Web/SNMP Card can be installed without turning off the UPS or disconnecting the load.

The following steps explain how to install the ConnectUPS-X or ConnectUPS-BD:

1. Verify that both DIP switches on the card are set to the **0** (off) position (see Figure 1).

NOTE If you are setting up the ConnectUPS Card in a DHCP environment, set DIP switch 2 to the **1** (on) position.

2. Remove the X-Slot™ or BestDock cover on the UPS rear panel. Retain the screws.

NOTE If there is another card already installed with an attached communication cable, disconnect the cable and then remove the card. Verify that doing so will not disrupt other communication.

3. To prevent electrostatic discharge (ESD), place one hand on a metal surface such as the UPS rear panel.
4. Slide the card into the open slot and secure with the screws removed in Step 2 (see Figure 2 and Figure 3).

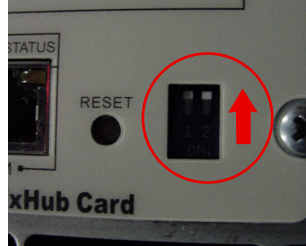


Figure 1. Verify DIP Switches

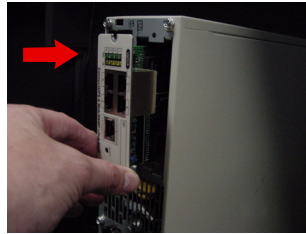


Figure 2. Install the ConnectUPS Card

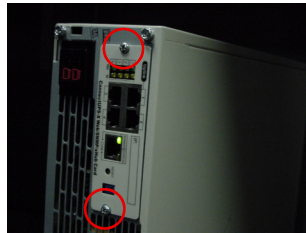


Figure 3. Secure the ConnectUPS Card

5. Connect an active Ethernet cable (supplied) to the Uplink Ethernet connector on the ConnectUPS-X or to the network connector on the ConnectUPS-BD (see Figure 4).

6. To configure the card using a **serial** connection, continue to Section 3, "Download the Wizard," on page 8.

To configure the card using a **network** connection, continue to Section 2, "Verify the Card's Original IP Address."



Figure 4. Install the Ethernet Cable

NOTE A serial connection is recommended for configuration. Configuring through a network connection requires the extra steps of verifying the card's original IP address and ensuring that the IP address is unique on the network (described in the following section).

Section 2

Verify the Card's Original IP Address

NOTE Complete this section **ONLY** if connecting through your network. If you are certain of the card's IP Address, write it in Step 12 on page 7 and continue to Section 3, "Download the Wizard" on page 8. Otherwise, complete this section to verify the address.

To verify the card's original IP address:

1. Plug the RJ-45 end of the supplied configuration cable (labeled "PC") into the COM port on the card (see Figure 5).

NOTE Verify that you have used the port labeled "COM." The other ports on the card do not work for configuration.

2. Plug the other end of the configuration cable into the serial COM port on the computer.
3. Open your HyperTerminal program.
4. Enter a name and select an icon for your New Connection.
5. Select the appropriate serial connection (such as COM1). See Figure 6.
6. Set the serial line to 9600 baud, No parity, 8 data bits, 1 stop bit, and no flow control (see Figure 7).

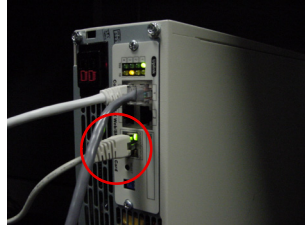


Figure 5. Install Configuration Cable

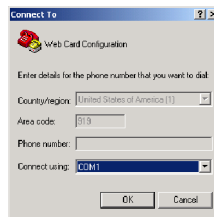


Figure 6. Select Connection

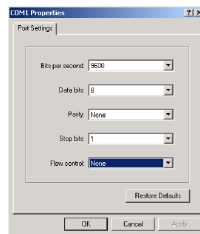


Figure 7. Configure Port Settings

7. Verify that the UPS is turned on.

8. After a few seconds, press **Enter**. The Password prompt appears (see Figure 8).

If the Password prompt does not appear, press **Enter** again. If it still does not appear, check that the serial line settings are correct, check the cabling to verify all connections are secure, and verify that your terminal program is on the correct communication port for the serial connection. Finally, verify that the card has power (one or more LEDs on the card are illuminated). The UPS should be turned on.

9. Type your *password* (the default is *admin*) and press **Enter**. The Main Menu screen appears. See Figure 8.

10. Type **1** and press **Enter** on the Main Menu to display the Web/SNMP Card Settings screen (see Figure 9).

11. Type **1** and press **Enter** to display the Set IP Address, Gateway Address and MIB System Group screen (see Figure 10).

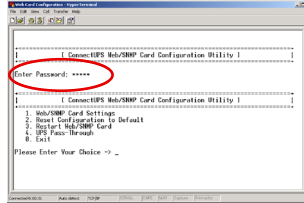


Figure 8. Enter Configuration Password

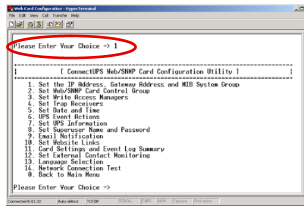


Figure 9. Card Settings

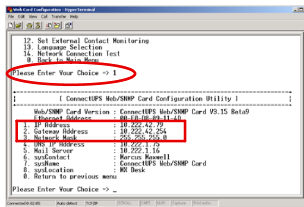


Figure 10. View ConnectUPS Card IP Address

12. Find the card's original IP Address listed on the screen.

Write the card's IP Address here:

(Optional) Write the IP Address on the space provided on the installed card (labeled "IP:").

You will need this IP Address to successfully connect to the card in Step 4 on page 10.

NOTE If the original IP Address is NOT a unique address on your network, type **1** and press Enter to enter a new and unique address on the screen. Also write the address in the space above.

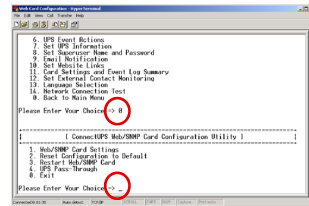


Figure 11. Exit

13. Type **0** and press **Enter** until you return to the Main Menu (see Figure 11).
14. Type **0** and press **Enter** to exit the card configuration (and save the change to the IP Address if made).
15. Remove the configuration cable.
16. Continue to Section 3, "Download the Wizard."

Section 3

Download the Wizard

To download the eNotify Installation and Registration Wizard v2.0:

1. Visit: www.powerware.com/eNotify
2. Click the **eNotify Installation and Registration Wizard** link.
Save the download file to your desktop.
3. Double-click the downloaded file on your desktop to run the wizard installation. Follow the instructions in the Microsoft Windows Setup program to install the wizard.

When the installation is complete, the eNotify Installation and Registration Wizard icon will be available on your desktop and listed in your “Start | Programs | Eaton Electrical Services and Systems | eNotify Install” menu.
4. Continue to Section 4, “Configure the Card for eNotify.”

Wizard Keyboard Shortcuts

You may find the following keyboard shortcuts helpful:

- **Tab** moves the cursor to the next field, button, or option group.
- **Shift+Tab** moves the cursor to the previous field, button, or option group.
- **Enter** activates the selected button.
- Use the **Spacebar** to fill or clear a selected check box.
- Use the **Up** and **Down** arrow keys to select an option in a selected option group.
- In fields with drop-down lists, type the first letter of an item to go directly to that place in the list. Type the second letter to go to that place, and so forth.

Section 4

Configure the Card for eNotify

The eNotify Installation and Registration Wizard asks you for the information it needs to configure your card for eNotify and to register your eNotify service. After the wizard gathers the information, it saves those settings to your card. The wizard also automatically saves your settings on your computer for later use, and you can copy the settings to a configuration file to use on other computers or for backup purposes.

NOTE These instructions configure and register the card for eNotify service only. For other instructions, refer to the *ConnectUPS Web/SNMP Card User's Guide PDF on the Software Suite CD*.

To configure the card for eNotify and register eNotify service:

1. Double-click the **eNotify Installation and Registration Wizard** icon on your desktop to open the wizard.
2. On the Welcome screen (Figure 12), select one of the following options and click **Next**:
 - To type in all new data for the wizard, select **Configure card with new values**. When you click Next, the UPS Type screen (Figure 13) opens. Continue with Step 3.
 - To use the settings saved on your computer during the last configuration, select **Configure card using last known wizard settings**. The wizard screens will be populated with the last saved settings, and you can change them as needed for the new card. When you click Next, the UPS Type screen (Figure 13) opens. Continue with Step 3.

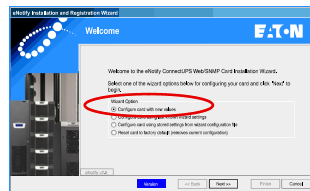


Figure 12. Welcome

- To use the settings previously saved in a separate file, select **Configure card using stored settings from wizard configuration file**. The wizard screens will be populated with the file's settings, and you can change them as needed for the new card. When you click **Next**, follow the instructions to specify the file to use, and whether to use the stored settings as is or modify them. If you choose to use the settings as is, continue with Step 12 on page 13. If you choose to modify the settings, continue with Step 3.

- On the UPS Type screen (Figure 13), select whether the UPS is a **New** or a **Replacement** UPS. If a replacement, also enter the serial number of the UPS being replaced. Click **Next**.

- Follow the instructions on the ConnectUPS Web/SNMP Card screen (Figure 14) to connect the appropriate cable and enter the **Connection Type** and **Password**.

Click **Next**. The wizard checks that the card's firmware is up to date, and then displays the serial number and firmware version for the card. Click **OK** to continue.

NOTE To keep your firmware up to date, visit www.powerware.com/connectups often for updates.

NOTE If you are using a Network connection type, the wizard asks for the current IP Address of the card. Type the IP Address you listed in Step 12 on page 7.

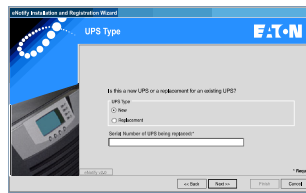


Figure 13. Set UPS Type

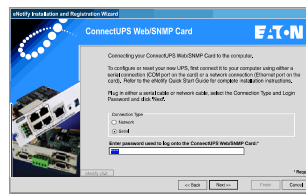


Figure 14. Install Cable and Set Card Connection

- On the Network Configuration screen (Figure 15), type the network configuration parameters. See the Checklist for the required parameters. Click **Next**.

NOTE A DNS Server is required if you will be using a named NTP Server (see Step 10), or if you entered a named mail server on this screen instead of an IP Address.

The wizard tests the SMTP connection for validity. If an error occurs, consult your network administrator. The wizard will not proceed to Step 6 if your SMTP connection returns an error.

- On the Location Information screen (Figure 16), type a description for the UPS **Location**, and select the **UPS Model** and **Input/Output Voltage**. See the nameplate on the UPS for model and voltage information. Click **Next**.
- On the Company Information screen (Figure 17), type your company contact information. Click **Next**.

NOTE You will make updates to customer information by telephone. For more information, see Section 5, "Update the Initial Registration" on page 16.

Figure 15. Configure Network Connections

Figure 16. Set Location Information

Figure 17. Set Company Information

- On the Notifications screen (Figure 18), type each contact's **Name**, **Phone Number**, and **E-Mail Address**. See the Checklist for the list of contacts to notify.

List each contact in order of **Priority**. The Customer Reliability Center (CRC) will notify the Priority 1 contact first, then the Priority 2 contact, and so forth.

For each contact, select which report (or combination of reports) to send to the contact:

- Customer Monthly Reports (**CMR**)
- Loss of Communications (**LC**)
- Critical Events (**CE**).

Click **OK**.

- On the summary Notifications screen (Figure 19), verify that the notifications contact list is correct.

To edit the list, click **Edit Contacts** to return to the previous screen (Figure 18) and make changes.

When the contact list is correct, click **Next**.

- On the Date and Time Information screen (Figure 20), configure the date and time settings for the UPS. Enter the optional Network Time Protocol (NTP) Server information and the NTP Time Zone, and select whether to enable Daylight Savings Time. Click **Next**.

- On the External Contact Monitoring screen (Figure 21), describe the external contacts for the Environmental Monitoring Probe (EMP) if you are using them. Type a **Name** for each dry contact and select its **Type**. Click **Next**.

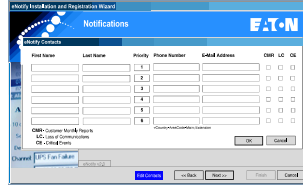


Figure 18. Set Contact Persons to Notify

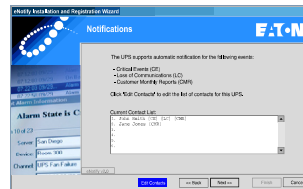


Figure 19. Verify Notification Contacts

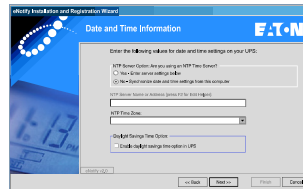


Figure 20. Set Date and Time

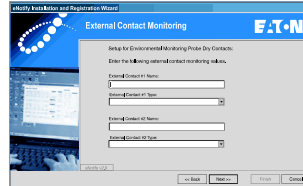


Figure 21. Set External Contacts

12. The wizard has finished gathering all of your configuration information and opens the Ready to Configure screen (Figure 22).

To review or change any settings, click **Back** to return to previous screens.

To finish the configuration, click **Configure**. The configuration process may take several minutes to complete. The wizard displays a status screen while configuring.

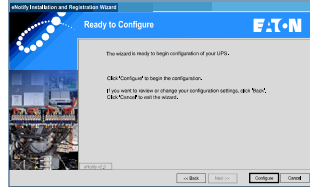


Figure 22. Ready to Configure

13. On the Network/E-Mail Test screen (Figure 23), test your network and e-mail settings to verify that the connections were successful:

NOTE The Network Test and the E-Mail Test are both required. Before running the tests, verify that a network cable is plugged into the Ethernet port on the card. If you are configuring using a serial connection, also verify that a serial cable is plugged into the serial port on the card.

Click **Network Test** to test the network configuration.

Click **E-Mail Test** to test the e-mail configuration.

Each test may take several minutes. When both tests finish, click **Next**.

If either test fails, complete or cancel the wizard, then check all addresses, server names, and communications, and re-run the wizard (using the “last known wizard settings” option) or call your service provider for assistance.

NOTE You will verify the success of the E-mail Test when the wizard is finished (in Step 17 on page 15).

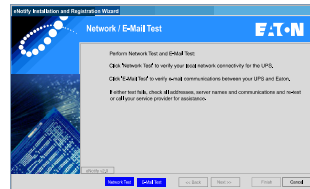


Figure 23. Perform Network and E-Mail Tests

-
16. The wizard has successfully finished all configuration tasks. The card is configured and eNotify is registered.

The wizard has also saved all the configuration settings on your computer, and the settings can be recalled the next time the wizard is run. If you want to save the wizard settings in a separate file as a backup or to transfer to another computer for configuring an additional UPS, click **Export Config** and follow the instructions.

***NOTE** The default name for the wizard configuration file is “eNotify Settings YYYYMMDDHHMM.wiz” and can be changed. The filename includes the Year (YYYY), Month (MM), Day (DD), Hour (HH), and Minute (MM) that the file was saved.*

To configure another UPS, select **Yes** and then click **Next**. The Welcome screen opens (see Figure 12 on page 9). Verify the E-mail Test in Step 17, and then continue with Step 2 on page 9 to configure the additional UPS.

To close the wizard, select **No** and then click **Finish**.

17. To verify that your test e-mail was received at the CRC, visit: <http://testemail.powerware.com>

Section 5

Update the Initial Registration

***NOTE** Complete any changes to initial registration information by telephone for security reasons.*

You can update the following registration information:

- The contact information (name, priority, phone number, and e-mail address) for the persons who receive automatic notification for UPS events
- The list of reports each notification contact receives

To make changes to registration information, call the CRC at 1-800-843-9433.

Section 6

Update the Initial Configuration

NOTE When the wizard configures a card, all the settings in the wizard overwrite any current eNotify settings in the card. When you update a card, verify that you choose the appropriate set of settings to import into the wizard.

To use the wizard to update the eNotify settings on the ConnectUPS Web/SNMP Card:

1. Double-click the **eNotify Installation and Registration Wizard** icon on your desktop to open the wizard. The Welcome screen opens (see Figure 27).
2. To update a card using the last settings saved on the computer, select **Configure card using last known wizard settings** and click **Next**. The UPS Type screen (Figure 13 on page 10) opens. Continue with Step 3 on page 10. Modify the settings as needed for the new configuration.

To update a card using a separate wizard configuration file, select **Configure card using stored settings from wizard configuration file** and click **Next**. Follow the instructions to specify the configuration file, then continue with Step 3 on page 10 to change the settings as needed.

To reset a card to its original factory default settings, select **Reset card to factory default (removes current configuration)** and click **Next**. Follow the instructions to confirm the reset.

Section 4, “Configure the Card for eNotify,” on page 9 describes how to configure a card with new values.

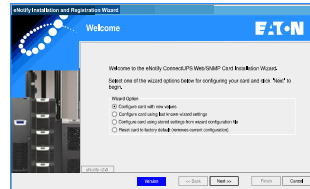


Figure 27. Welcome

Section 7

Acronyms

This document contains the following acronyms:

CD	Compact Disk
CE	Critical Events (report)
CMR	Customer Monthly Reports (report)
COM	Communication
CRC	Customer Reliability Center (Eaton)
DHCP	Dynamic Host Configuration Protocol
DIP	Dual Inline Package
DNS	Domain Name System
EMP	Environmental Monitoring Probe
ESD	Electrostatic Discharge
IP	Internet Protocol
LC	Loss of Communications (report)
MAC	Media Access Control
MIB	Management Information Base
NTP	Network Time Protocol
PC	Personal Computer
PDF	Portable Document Format
RJ-45	Registered Jack-45 (standard Ethernet serial connector)
RS-232	Recommended Standard-232 (asynchronous serial line standard)
SMTP	Simple Mail Transfer Protocol
SNMP	Simple Network Management Protocol
UPS	Uninterruptible Power System

HELP DESK NUMBERS:

UNITED STATES
1.800.843.9433

CANADA
1.800.461.9166 ext. 260

www.powerware.com

ALL OTHER COUNTRIES
Call your local sales
representative

Eaton and Powerware are registered trademarks and ConnectUPS and X-Slot are trademarks of Eaton Corporation or its subsidiaries and affiliates. Microsoft and Windows are registered trademarks of Microsoft Corporation. HyperTerminal is a registered trademark of Hilgraeve.



Powerware

© 2007 Eaton Corporation
All Rights Reserved
164201684 Rev 1