

you can
Canon

EOS 5D
EOS 5D Mark II

Beyond
the obvious.





EOS 5D
Mark II

BEYOND THE OBVIOUS

At Canon, our aim will always be to put the very finest photographic tools into the hands of those who see beyond the obvious.

Introducing two cameras that embody this spirit: the EOS 5D Mark II and the EOS 50D. Cameras for people who make photographs.



**EOS
50D**

BEYOND CONVENTION

Sometimes it's best to let the specifications speak for themselves. Full frame 21.1 Megapixel image quality. Low noise CMOS sensitivity up to ISO 25,600. 310* frame bursts at 3.9 frames per second. And in an exciting break with convention, Full HD video capture that continues even as you shoot stills. All cocooned in a tough, discreet and compact magnesium alloy body that leaves other cameras looking uncomfortably overweight.

It's not that EOS is so far ahead. It's just that everything else is so far behind.

HIGH-END QUALITY

Every detail of the EOS 5D Mark II is carefully designed, fastidiously built and relentlessly tested to produce impeccable image quality. From its 14-bit Canon CMOS sensor and powerful DIGIC 4 processor - the benchmark for precision processing and accurate colour reproduction - to its EOS Integrated Cleaning System; from its high ISO speed noise reduction to its high sensitivity auto focus, the EOS 5D Mark II is a monument to outstanding images.

HD VIDEO

From photojournalists covering world events to wedding photographers charged with catching the big day, most professional image makers are familiar with the question "can you also do video?". The EOS 5D Mark II provides the answer. Available from Live View mode, a new Movie function allows photographers to capture full 1920 x 1080 High Definition video at 30 frames per second. Photographers can even capture full resolution stills during video capture.

*When used with UDMA card. See specifications for details.



EOS 5D
Mark II



© Rodolphe Simeon



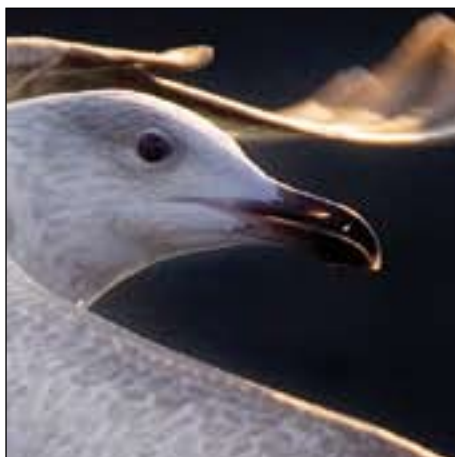
THE FULL FRAME ADVANTAGE

The EOS 5D Mark II's full frame sensor has many advantages. A bigger sensor means larger pixels, improving dynamic range and signal to noise ratio for smoother gradations and sharper, cleaner images - even at high ISO speeds and long exposures. No crop factor means wide EF lenses stay wide. As well as benefiting from finer control over depth of field, photographers moving up to the EOS 5D Mark II's full frame format will find it a joy to work with the large, bright viewfinder.





© Brutus Östling



EF-S LENS MOUNT

At the heart of the EOS 50D is an APS-C compact sensor. Ideal for sports and wildlife photographers, this gives a 1.6x crop factor, extending the effective reach of long lenses. Compatible with all EF lenses, the EOS 50D's EF-S lens mount also connects to wide EF-S lenses for dramatic landscapes and atmospheric interiors.

BEYOND LIMITS

When you pick up your new EOS 50D for the first time, switch to high speed continuous shooting, hold down the shutter release, and listen.



**EOS
50D**

If you thrive on getting amongst the action, the sound of 90* uninterrupted frames firing at 6.3 frames per second will be music to your ears. And with each frame captured at 15.1 Megapixels with 14-bit sampling, there's also plenty to delight your eyes.

SPEED

To keep you shooting at high shutter speeds with long lenses as the sun disappears, ISO sensitivity is expandable to an impressive 12,800 – perfect for catching an elusive bird or a distant tackle when light is fading. And even at high ISO speeds, the large pixel sites of Canon's CMOS sensor are proven to ensure smooth colour gradation and low noise.

PERFORMANCE

With its near instantaneous start-up time, low power consumption, precision auto focus and advanced features such as spot metering, the EOS 50D is the perfect balance of raw power and supreme control. To keep you focused on composing the perfect frame, 9 cross-type auto focus sensors lock onto difficult, low contrast subjects with ease. For low light shooting, a diagonal cross type centre point provide extra sensitivity with f/2.8 and faster lenses. The EOS 50D thinks with you and works for you.

*When used with UDMA card. See specifications for details.

BEYOND THE SURFACE

CMOS

It is Canon's CMOS technology that gives the EOS 5D Mark II and EOS 50D their quality, speed and high ISO performance edge. Large pixel sites ($4.7 \mu\text{m}^2$ on the EOS 50D and $6.4 \mu\text{m}^2$ on the EOS 5D Mark II) maximise photo diode area while minimising microlens gap, to provide exceptional dynamic range and sensitivity. Canon's CMOS refreshes quickly, for faster frame rates, and runs cooler to help reduce noise and extend battery life. And when light is fading, expanding to ISO 12,800 on the EOS 50D and ISO 25,600 on the EOS 5D Mark II will keep you shooting at fast shutter speeds without the need to switch to flash.

DIGIC 4

To handle the sheer volume of data generated by the EOS 5D Mark II and EOS 50D, Canon's engineers have developed DIGIC 4: Canon's new generation image processor. DIGIC 4 delivers the power to process 14-bit sensor data, for smoother tonal gradations, faster than ever before. As well as being fast, processing delivers precise colour reproduction. DIGIC 4's high ISO noise reduction algorithm with new level settings strikes the perfect balance between preservation of detail and the removal of unwanted static. Peripheral Illumination Correction is now available in camera, while a Highlight Tone Priority feature retains detail in bright areas. And naturally, DIGIC 4 delivers the fast playback, long battery life and fast start-up times for which digital EOS is renowned.

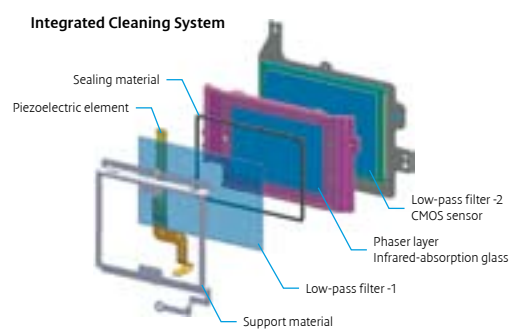




© Getty Images / Paul Souders

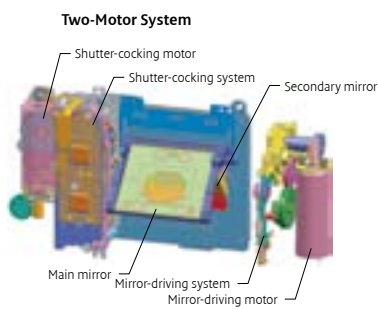
EOS INTEGRATED CLEANING SYSTEM

To keep your images pristine, the EOS 5D Mark II and EOS 50D do more than just vibrate the sensor to loosen unwanted dust particles. An integrated system of components and materials that works in concert to reduce, repel and remove dust now includes a Fluorine coating on the cameras' low-pass filter, substantially increasing the resistance to dust adhesion. The effect of any resistant particles recorded as Dust Delete Data can be removed automatically with Canon's Digital Photo Professional software.





© Yueh-Hua Lee



SHUTTER MECHANISM

The soft-touch release shutter mechanism on both cameras has a maximum speed of 1/8,000 second, with a durability rating of over 100,000 cycles. The whisper-quiet mirror mechanism is damped in both directions to minimise unwanted vibrations. For particularly sensitive situations, an electronic 1st curtain shutter mimics the high speed mechanical shutter for virtually silent operation.



BEYOND DAYLIGHT

FOCUS AND METERING

To keep your subject sharp as you focus on framing the shot, both cameras feature a highly responsive 9-point auto focus system. The centre AF points on both cameras provide extra sensitivity with f/2.8 lenses ensuring reliable auto focus when the light begins to fade. While the 6 assist points on the EOS 5D Mark II and the 9 cross type points on the EOS 50D ensure that subject acquisition is fast wherever the subject is in the frame. Spot metering on both cameras allows for precise readings in difficult lighting conditions. Switch to AI SERVO mode and your camera will even predict the position of rapidly moving subjects as they approach or recede from the camera.

MENU SYSTEM

A byword for fast, intuitive camera navigation, the EOS menu system on both cameras is inherited directly from Canon's professional EOS-1D Mark III camera. A special Quick Control Screen provides fast access to key functions - so you spend less time navigating and more time shooting.

3.0" VGA CLEAR VIEW LCD SCREEN

For easy, fast checks on composition and sharpness, even in sunlit conditions, both cameras feature a large, bright 3.0" VGA Clear View LCD screen. A wide 170° angle of view on the EOS 5D Mark II and 160° on the EOS 50D makes Live View composition easier from awkward positions. Designed for frequent use in real conditions, the screen is guarded by a special protective, anti-reflective coating. The Auto LCD Brightness function on the EOS 5D Mark II saves power and optimizes usability by adjusting screen brightness automatically to suit ambient light conditions.





© Andy Radka

BEYOND CLARITY

The CMOS sensors of the EOS 50D and EOS 5D Mark II are capable of resolving staggering levels of detail. To deliver that detail in pristine condition to the sensor, Canon's EF and EF-S lens range includes some of the world's finest optics.





IMAGE QUALITY

Built for a digital age, EF and EF-S lenses incorporate specially designed elements and Super Spectra coatings to avoid secondary sensor and lens element reflections that can otherwise cause ghosting and flare. To counter the effects of chromatic aberration in telephoto and long zoom lenses, Canon's engineers employ special materials such as fluorite and Canon's patented Ultra Low Dispersion (UD) glass. Aspheric elements are included to tackle spherical aberrations that can otherwise result in soft, low contrast images.

PERFORMANCE

The auto focus of many EF and EF-S lenses is driven by an Ultrasonic Motor (USM), with super fast and near silent operation. USM also has great holding torque to avoid overshooting once focus is achieved. Canon's optical Image Stabilizer (IS) technology is now found on many lenses. Compensating for hand and vehicle movements and vibrations by an equivalent of up to five stops, IS expands dramatically a photographer's handheld shooting options.

SPECIAL LENSES

From Super Macro to Tilt & Shift, Fish-eye to Super Telephoto, Canon has an EF or EF-S lens to challenge every location and excite every photographer.

L-SERIES LENSES

Recognisable by the distinctive red ring around the outer barrel, Canon's Professional L-series lenses represent the very finest in Canon EF optics. They incorporate the highest quality optical materials to provide unparalleled image performance and operability, with a build quality engineered to operate under the most demanding of conditions.



BEYOND PERFORMANCE

Off camera flash systems. Battery grips. Wireless File Transmitters. Extenders. Remote Controllers. Customise each set up to suit your various styles with the world's most advanced and fully integrated system of camera accessories.



REMOTE CONTROL UNITS

With a Canon wired or wireless remote switch, you can position and focus your camera to perfection, then fire the shutter remotely. This is ideal for tripod shots taken at slow shutter speeds, where even tiny amounts of camera shake could compromise your shot. Wireless Controllers can also be used to activate mirror lock and bulb-shutter functions.

SPEEDLITE FLASH UNITS

As powerful as it is versatile, Canon's Speedlite flash system extends studio lighting possibilities into the field. Control and fire multiple banks of slave flash units with an ST-E2 transmitter or the master flash capability of the powerful 580EX II. Throw beautiful, even light across tiny subjects with specialist Macro Ring Lite and Twin Lite flashes. Both the EOS 5D Mark II and EOS 50D feature E-TTL II, an advanced flash algorithm that integrates seamlessly with all Speedlite EX series flashes.

WIRELESS FILE TRANSMITTERS

Ideal for when you're working to a tight deadline, a Wireless File Transmitter beams images straight from your camera to a storage device, computer or FTP server - ready for processing and sending just seconds after they're shot. With a transmitter fitted, you can also wirelessly trigger the shutter button, or download images via your internet browser - or take studio shots from a computer using the supplied EOS Utility software.





© Lozza

When you choose EOS, you choose more than just the finest camera. You choose an entire photographic system.



BATTERY GRIPS

Because the action does not wait while you change batteries, both cameras have an optional battery grip. Each utilises two Battery Packs or six AA batteries to extend your shooting time. Both grips feature a vertical orientation shutter release and key controls for comfortable portraiture work, and the substantial grip helps balance the camera when using long lenses.



BEYOND THE SHOOT

DIGITAL PHOTO PROFESSIONAL

Supplied with every digital EOS, Canon's Digital Photo Professional (DPP) software is utilised for editing, processing and converting Canon RAW files. It provides an intuitive interface for processing RAW files whilst working in conjunction with the EOS Integrated Cleaning System to remove the effects of any sensor dust that may have been present during the shoot. It also integrates specific EF and EF-S lens information passed from the camera to optimise image quality.

WHY SHOOT RAW?

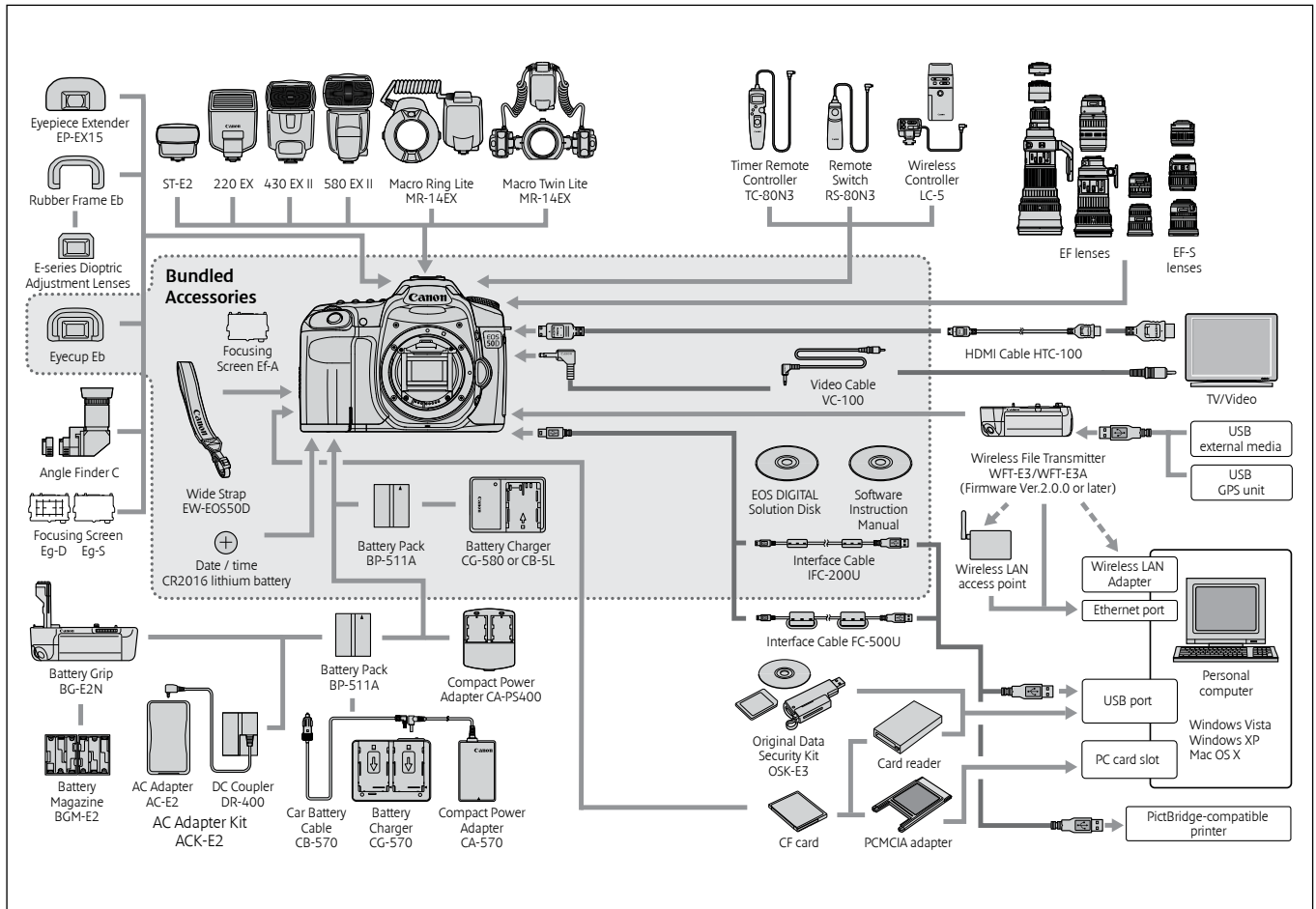
When you shoot in RAW, you record the equivalent of a digital negative. Actual pixel data is recorded with minimal processing. The benefit, quite simply, is more image detail and greatly expanded post production options. With a RAW image opened in Canon's DPP software, you can adjust variables such as exposure, white balance, noise reduction, sharpening, Picture Style, contrast and lens correction without losing any of the original data. Processing your RAW file to a 16 bit TIFF with DPP maps your 14 bit file over the full 16 bit workspace for further editing and post production possibilities.

IN THE GALLERY

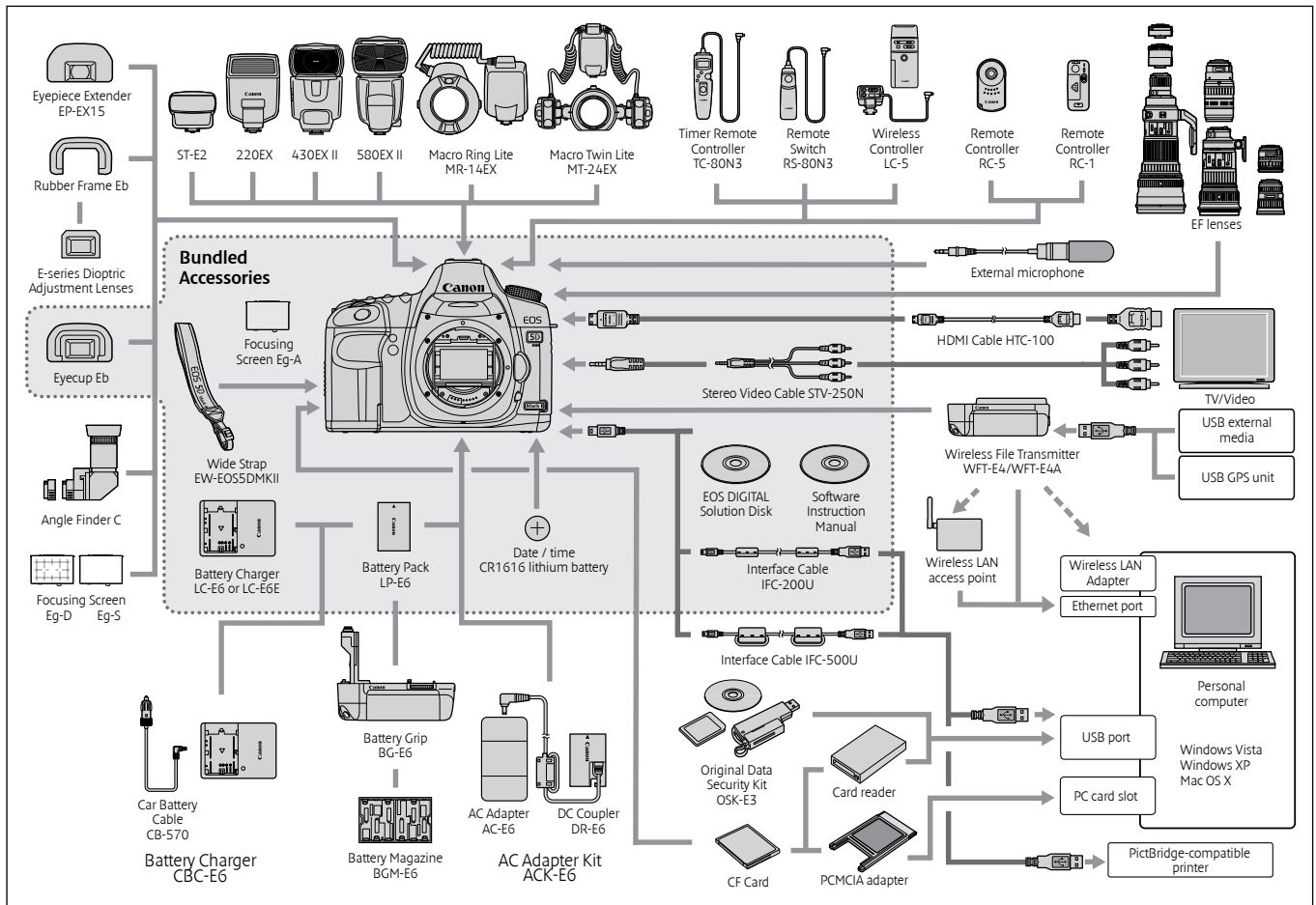
Whether you are selling wedding prints or preparing for your next exhibition, the ability to produce your own prints on gallery quality stock keeps you in control and gives you flexibility to reprint at times that suits you and your clients. From 10x15 snaps to A1 posters, Canon's SELPHY, PIXMA and imagePROGRAF printers are the perfect partner for your EOS.



SYSTEM CHART EOS 50D



SYSTEM CHART EOS 5D MARK II



SPECIFICATIONS

	EOS 50D	EOS 5D Mark II
IMAGE SENSOR / PROCESSOR		
Type/ Effective Pixels	22.3 x 14.9 mm CMOS/ Approx. 15.10 Megapixels	36 x 24 mm CMOS/ Approx 21.1 Megapixels
Sensor Cleaning	EOS integrated cleaning system with fluorine coating	EOS integrated cleaning system with fluorine coating
Image Processor	DIGIC 4	DIGIC 4
Lens Mount	EF/EF-S	EF (excludes EF-S lenses)
Focal Length	Equivalent to 1.6x the focal length of the lens	Equivalent to 1.0x the focal length of the lens
FOCUSING		
Type	TTL-CT-SiR with a CMOS sensor	TTL-CT-SiR with a CMOS sensor
AF System/ Points	9 cross-type AF points (f/2.8 at centre)	9-point AF (plus 6 Assist AF points)
Predictive AF ⁷	Yes, up to 8m	Yes, up to 8m
AF Assist Beam	Intermittent firing of built-in flash or emitted by optional dedicated Speedlite	Emitted by an optional dedicated Speedlite
AF Microadjustment	Yes	Yes
EXPOSURE CONTROL		
Metering modes	Evaluative, partial, spot, centre-weighted	Evaluative, partial, spot, centre-weighted
Exposure Compensation/ AEB	+/-2 EV in 1/3 or 1/2 stop increments (can be combined with AEB).	+/-2 EV in 1/3 or 1/2 stop increments (can be combined with AEB).
ISO Sensitivity	Auto (100-1600), 100-3200, ISO can be expanded to H1: 6400 and H2:12800	Auto (100-3200), 100-6400, ISO can be expanded to H1: 12800 and H2:25600
SHUTTER		
Speed	30-1/8000 sec (1/2 or 1/3 stop increments), Bulb (Total shutter speed range. Available range varies by shooting mode)	30 - 1/8000 sec. (1/3 stop increments), Bulb (Total shutter speed range. Available range varies by shooting mode)
WHITE BALANCE		
Settings	9	9
WB Bracketing	+/-3 levels in single level increments	+/-3 levels in single level increments
VIEWFINDER		
Type	Pentaprism	Pentaprism
Coverage (Vertical/Horizontal)	Approx. 95%	Approx. 98%
Magnification	Approx. 0.95x ⁴	Approx. 0.71x ⁴
Eye point	Approx. 22mm (from eyepiece lens center)	Approx. 21mm (from eyepiece lens centre)
Dioptr Correction	-3 to +1 m-1 (dioptr)	-3 to +1 m-1 (dioptr)
Focusing Screen	Interchangeable (3 types, optional). Standard Focusing Screen Precision Matte EF-A	Interchangeable (3 types, optional). Standard Focusing Screen Precision Matte Eg-A
LCD MONITOR		
Type	3.0" ClearView TFT, approx. 920K dots	3.0" Clear View TFT, approx. 920K dots
Viewing Angle (horizontally/vertically)	Approx 160°	Approx 170°
Coating	Dual Anti-reflection	Dual Anti-reflection
Brightness Adjustment	Adjustable to one of seven levels	Auto 3 levels + Manual adjustable to one of seven levels
FLASH		
Built-in Flash GN (ISO 100, meters)	13	
Built-in Flash Coverage	up to 17mm focal length (35mm equivalent: 27mm)	
Modes	Auto, Manual Flash On/Off, Red-Eye Reduction	E-TTL Auto Flash
Flash Exposure Compensation	+/- 2EV in 1/2 or 1/3 increments	+/-2 EV in 1/3-stop increments
Flash Exposure Bracketing	Yes, with compatible External Flash	Yes, with compatible External Flash
Flash Exposure Lock	Yes	Yes
Second Curtain Synchronisation	Yes	Yes
HotShoe/ PC terminal	Yes/ Yes	Yes/ Yes
External Flash Control	Via camera menu screen	Via camera menu screen
SHOOTING		
Modes	13 + 2 custom modes	6 + 3 custom modes
Picture Styles	Standard, Portrait, Landscape, Neutral, Faithful, Monochrome, User Defined (x3)	Standard, Portrait, Landscape, Neutral, Faithful, Monochrome, User Defined (x3)
Image Processing	Highlight Tone Priority, Auto Lighting Optimizer (4 settings), Long exposure noise reduction, High ISO speed noise reduction (4 settings), Auto Correction of Lens Peripheral illumination	Highlight Tone Priority, Auto Lighting Optimizer (4 settings) Long exposure noise reduction, High ISO speed noise reduction (4 settings), Auto Correction of Lens Peripheral illumination
Drive modes	Single, Continuous L, Continuous H, Self timer (2s, 10s)	Single, Continuous, Self timer /remote control (10s), Self timer /remote control (2s)
Continuous Shooting	Max. Approx. 6.3fps. (up to 90 images (JPEG) ¹ (with UDMA card), 16 images (RAW)) ²	Max. Approx. 3.9fps. (up to 310 images (JPEG) ¹ (with UDMA card), 13 images (RAW)) ²
LIVE VIEW MODE		
Type	Electronic viewfinder with image sensor	Electronic viewfinder with image sensor
Focusing	Manual Focus, Autofocus: Quick mode, Live mode, Live Face detection mode	Manual Focus, Autofocus: Quick mode, Live mode, Live Face detection mode
Display Options	Grid overlay (x2), Histogram	Grid overlay (x2), Histogram, data, no data
FILE TYPE		
RAW+JPEG simultaneous recording	Yes, any combination of RAW + JPEG, sRAW1 + JPEG, sRAW2 + JPEG possible	Yes, any combination of RAW + JPEG possible
Image Size	JPEG: (L) 4752x3168, (M) 3456x2304, (S) 2353x1568, RAW: (RAW) 4752x3168, (sRAW1) 3267x2178, (sRAW2) 2376x1584	JPEG: (L) 5616x3744, (M) 4080x2720, (S) 2784x1856, RAW: (RAW) 5616x3744, (sRAW1) 3861x2574, (sRAW2) 2784x1856
Movie Type	-	MOV (Video: H.264, Sound: Linear PCM)
Movie Size/Length	-	HD 1920 x 1080 (16:9), SD 640 x 480 (4:3) -30fps, Max 29m 59sec, Max file size 4GB.
Folders	New folders can be manually created and selected	New folders can be manually created and selected
OTHER FEATURES		
Metadata Tag	User copyright information	User copyright information
Water/ Dust resistance	Yes ⁶	Yes ⁶
Slide Show	Image selection: All images, by Date, by Folder, Playback time: 1/2/3/5 seconds, Repeat: On/Off	Image selection: All images, by date, by folder, movies, or stills, Playback time: 1/2/3/5 sec, Repeat: On/Off
Histogram/ Highlight Alert	Brightness, RGB/ Yes	Brightness, RGB/ Yes
Data Verification	Original image verification data can be appended to the image (OSK-E3 required for verification)	Original image verification data can be appended to the image (OSK-E3 required for verification)
Menu Languages	25 Languages English, German, French, Dutch, Danish, Portuguese, Finnish, Italian, Norwegian, Swedish, Spanish, Greek, Russian, Polish, Czech, Hungarian, Romanian, Ukrainian, Turkish, Arabic, Thai, Simplified Chinese, Traditional Chinese, Korean and Japanese	25 Languages English, German, French, Dutch, Danish, Portuguese, Finnish, Italian, Norwegian, Swedish, Spanish, Greek, Russian, Polish, Czech, Hungarian, Romanian, Ukrainian, Turkish, Arabic, Thai, Simplified Chinese, Traditional Chinese, Korean and Japanese
Firmware Update	Update possible by the user	Update possible by the user
INTERFACE		
Computer	USB 2.0 Hi-Speed (Mini-B)	USB 2.0 Hi-Speed (Mini-B)
Other	HDMI mini output, Video output (PAL/ NTSC), Extension system terminal (for WFT-E3)	HDMI mini output, Video output (PAL/ NTSC), Microphone input, Extension system terminal (for WFT-E4)
STORAGE		
Type	CompactFlash Type I/ II (Microdrive compatible, UDMA compatible), external storage with WFT-E3	CompactFlash Type I/ II (Microdrive compatible, UDMA compatible), external storage with WFT-E4
POWER SOURCE		
Batteries	Rechargeable Li-ion Battery BP-511/BP-511A or BP-512/BP-514 (BP-511A battery supplied), 1xCR2016 for date & settings	Rechargeable Li-ion Battery LP-E6, 1xCR1616 for date & settings
Battery life	Approx. 640 (at 23°C) ⁵ , Approx. 540 (at 0°C)	Approx. 850 (at 20°C) ⁵ , Approx. 750 (at 0°C)
Battery Indicator	4 levels	6 levels + percentage
PHYSICAL SPECIFICATIONS		
Body Materials	Magnesium Alloy body covers	Magnesium Alloy
Operating Environment	0 - 40 °C, 85% or less humidity	0 - 40 °C, 85% or less humidity
Dimensions (WxHxD)/ Weight (body only)	145.5 x 107.8 x 73.5 mm/ Approx. 730g	152 x 113.5 x 75 mm/ Approx. 810g

¹ Large/Fine(Quality B) resolution ² Based on Canon's testing conditions, JPEG, ISO 100, Standard Picture Style. Varies depending on the subject, memory card brand and capacity, image recording quality, ISO speed, drive mode, Picture Style, Custom functions etc. ⁴ With 50mm lens at infinity, -1m-1 dpt ⁵ Based on the CIPA Standard and using the batteries and memory card format supplied with the camera, except where indicated ⁶ Environmental Protection ⁷ With EF300mm f/2.8L IS USM at 50kph ⁸ Recommended Exposure Index

All data is based on Canon's standard testing methods except where indicated. Specifications are subject to change without notice.

TM and ®: All company and/or product names are trademarks and /or registered trademarks of their respective manufacturers in their markets and/or countries.

More detailed specifications are to be found on your local Canon website.

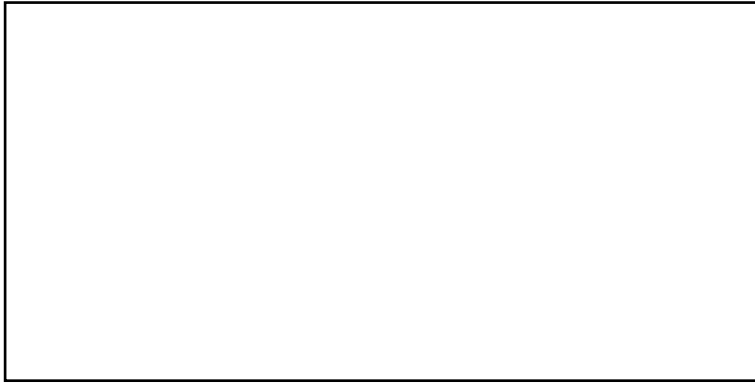
LENSES SPECIFICATIONS CHART

EF Lens	Lens construction (elements/group)	Closest Focusing Distance (m)	Filter Diameter (mm)	Weight (g)	Lens Hood	Lens Case/Pouch
EF 16-35mm f/2.8L II USM	16/12	0.28	82	640	EW-88	LP1319
EF 17-40mm f/4L USM	12/9	0.28	77	475	EW-83E (Standard)	LP1319
EF 20-35mm f/3.5-4.5 USM	12/11	0.34	77	340	EW-83II	LP1214
EF 24-70mm f/2.8L USM	16/13	0.38	77	950	EW-83F	LP1219
EF 24-85mm f/3.5-4.5 USM	15/12	0.5	67	380	EW-73II	LP1014
EF 24-105mm f/4L IS USM	18/13	0.45	77	670	EW-83H	LP1219
EF 28-90mm f/4-5.6 III	10/8	0.38	58	190	EW-60C	LP814
EF 28-90mm f/4-5.6 II USM	10/8	0.38	58	190	EW-60C	LP814
EF 28-105mm f/4-5.6	10/9	0.48	58	210	EW-63B	LP814
EF 28-105mm f/4-5.6 USM	10/9	0.48	58	210	EW-63B	LP814
EF 28-105mm f/3.5-4.5 II USM	15/12	0.5	58	375	EW-63II	LP814
EF 28-135mm f/3.5-5.6 IS USM	16/12	0.5	72	540	EW-78BII	LP1116
EF 28-200mm f/3.5-5.6 USM	16/12	0.45	72	500	EW-78D	LP1116
EF 28-300mm f/3.5-5.6L IS USM	23/16	0.7	77	1,670	EW-83G	LZ1324
EF 55-200mm f/4-5.6 II USM	13/13	1.2	52	310	ET-54	LP1016
EF 70-200mm f/2.8L USM	18/15	1.5	77	1,310	ET-83II (Standard)	LZ1324
EF 70-200mm f/2.8L IS USM	23/18	1.4	77	1,470	ET-86 (Standard)	LZ1324
EF 70-200mm f/4L IS USM	20/15	1.2	67	760	ET-74	LP1224
EF 70-200mm f/4L USM	16/13	1.2	67	705	ET-74 (Standard)	LZ1224
EF 70-300mm f/4-5.6 IS USM	15/10	1.5	58	630	ET-65B	LP1222
EF 70-300mm f/4.5-5.6 DO IS USM	18/12	1.4	58	720	ET-65B	LP1116
EF 75-300mm f/4-5.6 III USM	13/9	1.5	58	480	ET-60	LP1019
EF 75-300mm f/4-5.6 III	13/9	1.5	58	480	ET-60	LP1019
EF 90-300mm f/4-5.6	13/9	1.5	58	420	ET-60	LP1019
EF 90-300mm f/4-5.6 USM	13/9	1.5	58	420	ET-60	LP1019
EF 100-300mm f/4.5-5.6 USM	13/10	1.5	58	540	ET-65III	LP1019
EF 100-400mm f/4.5-5.6L IS USM	17/14	1.8	77	1,380	ET-83C (Standard)	LZ1324
EF 15mm f/2.8 Fisheye	8/7	0.2	Filter Holder	330	—	LP814
EF 14mm f/2.8L II USM	14/11	0.2	Filter Holder	645	Built-in	LP1016
EF 20mm f/2.8 USM	11/9	0.25	72	405	EW-75II	LP1214
EF 24mm f/1.4L II USM	13/10	0.25	77	650	EW-83K	LP1319
EF 24mm f/2.8	10/10	0.25	58	270	EW-60II	LP811
EF 28mm f/1.8 USM	10/9	0.25	58	310	EW-63II	LP814
EF 28mm f/2.8	5/5	0.3	52	185	EW-65II	LP1011
EF 35mm f/1.4L USM	11/9	0.3	72	580	EW-78C (Standard)	LP1214
EF 35mm f/2	7/5	0.25	52	210	EW-65II	LP1011
EF 50mm f/1.2L USM	8/6	0.45	72	590	ES-78	LP1214
EF 50mm f/1.4 USM	7/6	0.45	58	290	ES-71II	LP1014
EF 50mm f/1.8 II	6/5	0.45	52	130	ES-62	LP1014
EF 85mm f/1.2L II USM	8/7	0.95	72	1,025	ES-79 II (Standard)	LP1219
EF 85mm f/1.8 USM	9/7	0.85	58	425	ET-65III	LP1014
EF 100mm f/2 USM	8/6	0.9	58	460	ET-65III	LP1014
EF 135mm f/2L USM	10/8	0.9	72	750	ET-78II (Standard)	LP1219
EF 135mm f/2.8 (with Softfocus)	7/6	1.3	52	390	ET-65III	LP1016
EF 200mm f/2L IS USM	17/12	1.9	52 Drop-in	2,520	ET-120B	Lens Case 200
EF 200mm f/2.8L II USM	9/7	1.5	72	765	ET-83BII (Standard)	LP1222
EF 300mm f/2.8L IS USM	17/13	2.5	52 Drop-in	2,550	ET-120 (Standard)	Lens Case 300
EF 300mm f/4L IS USM	15/11	1.5	77	1,190	—	LZ1128
EF 400mm f/2.8L IS USM	17/13	3	52 Drop-in	5,370	ET-155 (Standard)	Lens Case 400
EF 400mm f/5.6L USM	7/6	3.5	77	1,250	—	LZ1132
EF 400mm f/4 DO IS USM	17/13	3.5	52 Drop-in	1,940	ET-120 (Standard)	Lens Case 400B
EF 500mm f/4L IS USM	17/13	4.5	52 Drop-in	3,870	ET-138 (Standard)	Lens Case 500
EF 600mm f/4L IS USM	17/13	5.5	52 Drop-in	5,360	ET-160 (Standard)	Lens Case 600
EF 800mm f/5.6L IS USM	18/14	6	52 Drop-in	4,500	ET-155	Lens Case 800
Extender EF 1.4x II	5/4	—	—	220	—	LP811
Extender EF 2x II	7/5	—	—	265	—	LP811
EF 50mm f/2.5 Compact Macro	9/8	0.23	52	280	—	LP814
Life-Size Converter EF	4/3	0.24	—	160	—	LP811
MP-E 65mm f/2.8 1-5x Macro Photo	10/8	0.24	58	710	—	LP1216
EF 100mm f/2.8 Macro USM	12/8	0.31	58	580	ET-67	LP1219
EF 180mm f/3.5L Macro USM	14/12	0.48	72	1,090	ET-78II	LZ1324
Extension Tube EF 12 II ¹	—	—	—	66	—	LP811
Extension Tube EF 25 II ²	—	—	—	125	—	LP811
TS-E 24mm f/3.5L	11/9	0.3	72	570	EW-75BII (Standard)	LP1216
TS-E 45mm f/2.8	10/9	0.4	72	645	EW-79BII (Standard)	LP1216
TS-E 90mm f/2.8	6/5	0.5	58	565	ES-65III (Standard)	LP1016
EF-S Lens*						
EF-S 60mm f/2.8 Macro USM	12/8	0.20	52	335	ET-67B	LP1016
EF-S 10-22mm f/3.5-4.5 USM	13/10	0.24	77	385	EW-83E	LP1319
EF-S 17-55mm f/2.8 IS USM	19/12	0.35	77	645	EW-83J	LP1219
EF-S 17-85mm f/4-5.6 IS USM	17/12	0.35	67	475	EW-73B	LP1116
EF-S 18-55mm f/3.5-5.6 II	11/9	0.28	58	190	EW-60C	LP814
EF-S 18-55mm f/3.5-5.6 IS	11/9	0.25	58	200	EW-60C	LP814
EF-S 18-200mm f/3.5-5.6 IS	16/12	0.45	72	595	EW-78D	LP1116
EF-S 55-250mm f/4-5.6 IS	12/10	1.1	58	390	ET-60	LP1019

* Only for EOS 50D, 40D, EOS 30D, EOS 20D, EOS 450D, EOS 400D, EOS 350D and EOS 300D.

- 1 Extension Tube EF 12 II cannot be used with the the following lenses at wide angles: EF 16-35mm f/2.8L II USM, EF-S 10-22mm f/3.5-4.5 USM, EF-S 17-55mm f/2.8 IS USM, EF-S 17-85mm f/4-5.6 IS USM, EF-S 18-55mm f/3.5-5.6 IS.
- 2 Extension Tube EF 25 II cannot be used with the the following lenses at wide angles: EF 16-35mm f/2.8L II USM, EF 17-40mm f/4L USM, EF 20-35mm f/3.5-4.5 USM, EF 24-70mm f/2.8L USM, EF 24-105mm f/4L IS USM, EF 28-300mm f/3.5-5.6L IS USM, EF-S 10-22mm f/3.5-4.5 USM, EF-S 17-85mm f/4-5.6 IS USM, EF-S 18-55mm f/3.5-5.6 II, EF-S 18-55mm f/3.5-5.6 IS and not recommended for the following lenses near the tele end: EF-S 10-22mm f/3.5-4.5 USM, EF-S 17-55mm f/2.8 IS USM.

This catalogue is printed on paper produced by M-real. M-real declares that this paper is made using wood from well-managed sources, and is produced at a mill holding PEFT Chain-of-Custody certification. (PEFC/04-31-0641)



you can
Canon

Canon Europa N.V.
Bovenkerkerweg 59-61
1185 XB Amstelveen
The Netherlands
www.canon-europe.com

Canon Inc.
www.canon.com

English Edition 0125W353
© Canon Europa N.V., 2008 (0908)