



Expand Your Imagination

CM 690

www.cooler-master.com



PRODUCT FEATURE

- > Accommodates up to seven 120 mm fans for high-efficiency ventilation.
- > Removable HDD racks provide for easy assembly
- > Cable management design for better cable routing and neatness
- > Tool-free user-friendliness for quick maintenance and upgrade
- > Roomy interior supports nVIDIA G80 SLI configuration

PRODUCT HIGHLIGHTS

Tool-free Structure



- >Removable HDD racks with anti-vibration pads for easy assembly and reduce noise



- >Tool-free kits for add-on card installation



- >Tool-free design for 5.25" devices



- >Thumb-screws for easy open side panel





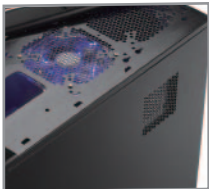
Expand Your Imagination

CM 690

www.coolermaster.com

PRODUCT HIGHLIGHTS

Thermal Structure



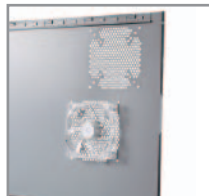
>Two 120 or 140mm fans can be installed on the top



>One 80x15 mm fan can be installed at the rear of Mainboard tray



>Ventilation hole to enhance airflow
>Retaining holes for the installation of liquid cooling kit



>One standard 120mm side fan (included) - LED fan is optional
>Side panel can install two 120mm fans to increase airflow for cooling VGA and CPU areas.



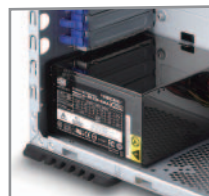
Cable Management



> Cable management design for neat routing



>Cable organizers minimize cable clutter



>Bottom-mounted Power Supply for improved cooling and installation



Expand Your Imagination

CM 690

www.cooler-master.com

SPECIFICATIONS



RC-690

Available Color	Black
Dimension	(L)524.5 X (W)213 X (H)482 mm
Material	Chassis: SECC, Bezel: Metal mesh+ABS
Motherboards	ATX, Micro-ATX
5.25" Drive Bays	5 Exposed (without the use of exposed 3.5" drive bay)
3.5" Drive Bays	1 Exposed (converted from one 5.25" drive bay)
HDD Bay	5
Cooling System	Front :120 mm Blue LED fan x 1, 1200 rpm, 21 dBA, Rear : 120 mm standard fan, 1200 rpm, 21 dBA Top : 120 or 140 mm fan x 2 (optional) Bottom : 120 mm fan x 1 (optional) Left : 120 mm fan x 2 (one is optional)- up to 140 mm fans Right : one 80 x 15 mm fan (optional)
I/O Panel	USB 2.0x2, IEEE 1394 x1, MIC x1, eSATA x 1, SPK x1 (support HD Audio)
Expansion Slots	7
Power Supply	Standard ATX PS2/ EPS 12V (Optional)