



Expand Your Imagination

# COSMOS 1000

[www.cooler-master.com](http://www.cooler-master.com)

## PERFORMANCE MEETS SILENCE

>> Innovation is the refusal to compromise

In 2007, Cooler Master created COSMOS, a serene spirit within a luxurious, high-performance body. Each line of COSMOS is born with elegant heritage originated from devotion to prudence and innovation.

It is captivating to know such power is enclosed behind the silence.





Expand Your Imagination

# COMES 1000

www.cooler-master.com

## PRODUCT FEATURES

### Superior Silent Environment:

- > Soundproof materials applied to build a quiet environment
- > Sound barrier design reduces vibration for silent operation

### Thermal Solution:

- > Dual bottom air intakes to enhance air flow and reduce system noise
- > Six aluminum detachable HDD modules with ventilation holes for optimizing cooling performance
- > Side removable VGA cooling tunnel to advance thermal airflow.

### Tool-free Structure

Tool-free kit for side panel installation



Patented finger pressing buttons for quickly maintaining or upgrading 5.25" drive devices

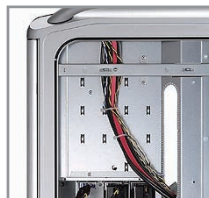


Detachable aluminum HDD trays for quick maintenance and upgradability



### Cable Management System

Better cable routing and neatness



### Front IO Panel

IO Panel on the top for easy access  
USB 2.0 x 4, SPK x 1  
MIC x 1, eSATA x 1



### Tool-free User-friendliness:

- > Patented finger pressing buttons for quickly maintaining or upgrading 5.25" drive devices
- > Tool-free design for opening side panel conveniently.

### Cable Management:

- > Separate HDD modules make it easy to organize cable direction
- > Cable management system for better cable routing and neatness



RC-1000





Expand Your Imagination

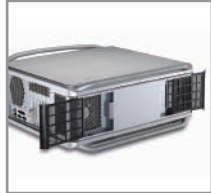
# CM Storm 1000

www.coolermaster.com

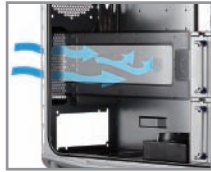
## Innovative Thermal Solution

### Air Intake System

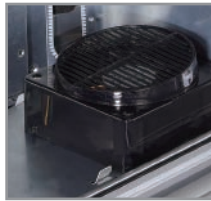
- > Dual bottom air intakes to draw in cool air in and reduce system noise.
- > Air filters can isolate dust effectively



Using negative pressure effect, removable wind tunnel can provide cool air flow for graphic card installed on Motherboard



120 mm bottom fan provides the maximum airflow and air pressure



### Aluminum HDD Trays

Using stack effect, aluminum HDD trays optimizes cooling performance. An extra fan can be installed to enhance the airflow of HDD module



### Exhaust Ventilation

- >Threes 120mm exhaust fans are equipped on the top and rear
- >Retaining holes on the top support the installation of dual 140mm fans
- > Retaining holes in the rear for liquid cooling kit



Soundproof materials / sound barrier applied to build a quiet environment





Expand Your Imagination

# CMES 1000

www.cooler-master.com

## Exclusive Giveaway



Aluminum carrying case features a sleek design ,creating a style and look. It helps users store tools, straps and spare parts conviently.

## SPECIFICATION

Color	Chassis Appearance: Silver, Bezel: Black
Dimensions	(W) 266 x (H) 598 x (D) 628 mm
Material	Chassis: Steel, Appearance: AL
Motherboards	E-ATX, ATX,
5.25" Drive Bays	5 Exposed (without the use of exposed 3.5" Drive bay) 4 Expose (with the use of one 3.5" Drive bay)
3.5" Drive Bays	6 ( Hidden ) ; 1 Exposed (converted from one 5.25" Drive Bay)
Front I/O Panel	USB 2.0 x 4, IEEE 1394 x 1, Audio x 1, SPK x 1, eSATA x 1
Cooling System	Bottom fan ( intake ) :120x120x25 mm x 1, 1200 rpm, 17 dBA (included) HDD fan : 120x120x25 mm x 1 (optional) Rear fan : 120x120x25 mm x 1 (included) Top fan (exhaust) : 120x120x25 mm fan x 2, 1200 rpm, 17 dBA (included)
Expansion Slots	7
Power Supply	PS2 / EPS 12V ( optional )
Other	Accessory Carrying Case x 1