



RAM® FORM-FIT HOLDERS FOR ZEBRA ET8x 2-IN-1 TABLET

AVAILABLE SKUs



PART NUMBER	POWERED	KEY LOCK	SINGLE USB PERIPHERAL	DUAL USB PERIPHERAL
1 RAM-HOL-ZE22U				
2 RAM-HOL-ZE22LU		•		
3 RAM-HOL-ZE22PU	•			
4 RAM-HOL-ZE22PLU	•	•		
5 RAM-HOL-ZE22PDU	•		•	
6 RAM-HOL-ZE22PDLU	•	•	•	
7 RAM-HOL-ZE22PD2U	•			•
8 RAM-HOL-ZE22PD2LU	•	•		•

PRIMARY MARKETS



**TRANSPORTATION
& LOGISTICS**



RETAIL



**WAREHOUSING &
MANUFACTURING**



HOSPITALITY



RAM® FORM-FIT HOLDERS FOR ZEBRA ET8x 2-IN-1 TABLET

AVAILABLE SKUs



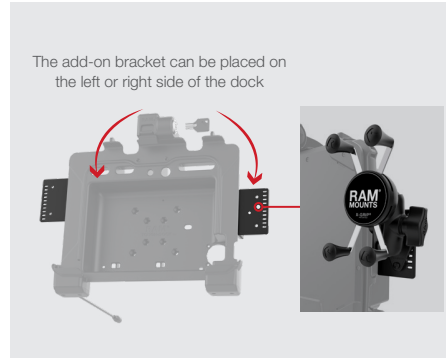
SUPPORTS DEVICE WITH & WITHOUT FRICTION HINGE RUGGED KEYBOARD

Detachable keyboard that opens and closes easily, making it an ideal match to perform efficiently in a vehicle, in the field or inside of a facility.



POGO PIN TECHNOLOGY

Integrated pogo pin contacts provide charging power to the device and protects the device's ports from constant plugging and unplugging.



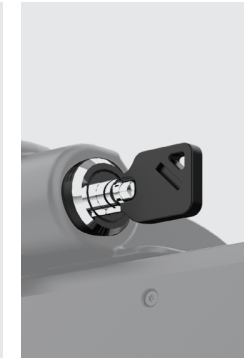
ADD-ON BRACKET

Includes one 2-hole AMPS accessory add-on bracket for additional device mounting such as a phone; can support USB cable retention, a small scanner, or peripheral to either side; compatible with RAM® 2-hole diamond bases.



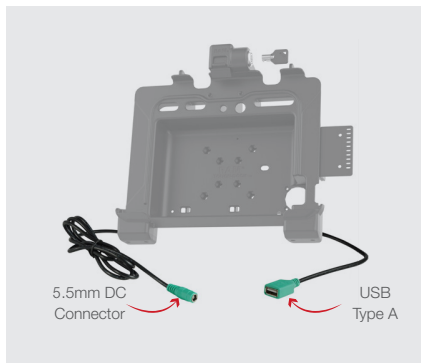
AMPS & VESA HOLE PATTERNS TO MOUNT ANYWHERE

Compatible with D size RAM® 4-hole AMPS and 75mm x 75mm VESA pattern bases for attaching a double socket arm; ball and socket technology allows for near-infinite adjustability.



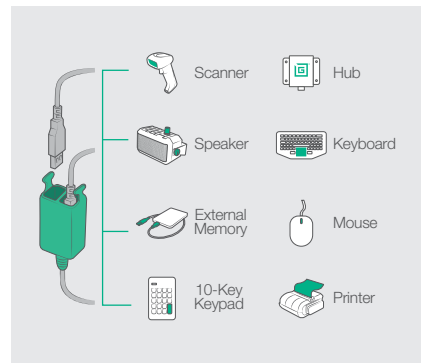
AVAILABLE IN LOCKING & NON-LOCKING

Includes a set of keys for theft deterrence.



AVAILABLE IN POWER & NON-POWERED, DATA WITH USB & NON-DATA

Power is provided by connecting to the dock's 5.5mm DC power jack, while peripheral support is provided by the built-in single USB Type A cable.



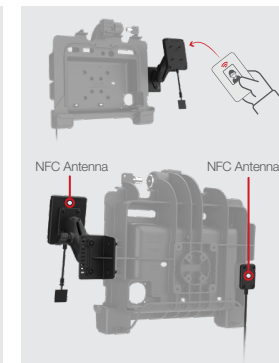
DUAL USB TYPE A AVAILABLE

Dual USB Type A connector supports adding up to two peripherals.



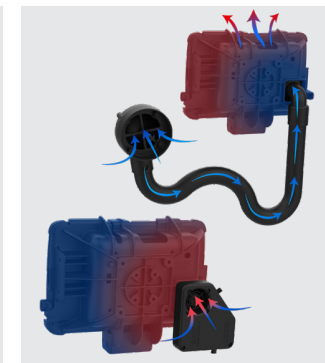
SUPPORTS DEVICE WITH ALL EXTERNAL ACCESSORIES

Dock accommodates tablet add-ons such as the Zebra Expansion Back, shoulder strap and stylus.



COMPATIBLE WITH NFC

Supports passage of data to a device from cards, tags, buttons, etc; supports Tap To Pay, asset tracking time tracking, attendance, and much more.



COMPATIBLE WITH TEMP MODULES

Dock accommodates RAM® Temp-Right™ and RAM® Vent-Temp™ for temperature regulating solutions.



RAM® FORM-FIT HOLDERS FOR ZEBRA ET8x 2-IN-1 TABLET

COMPATIBLE MOUNTS

Any of the new RAM® Tele-Pole™ mounts listed below can be used for vehicle mounting, to be paired with any RAM® No-Drill™ and drill-down vehicle bases. For forklift mounting, pair the Zebra ET8x with: [RAM-D-2461U-C-247-4](#)



RAM-VP-TTMF8-D-101-2461U
8" Upper Flange Pole with
D Size 75x75mm VESA Mount



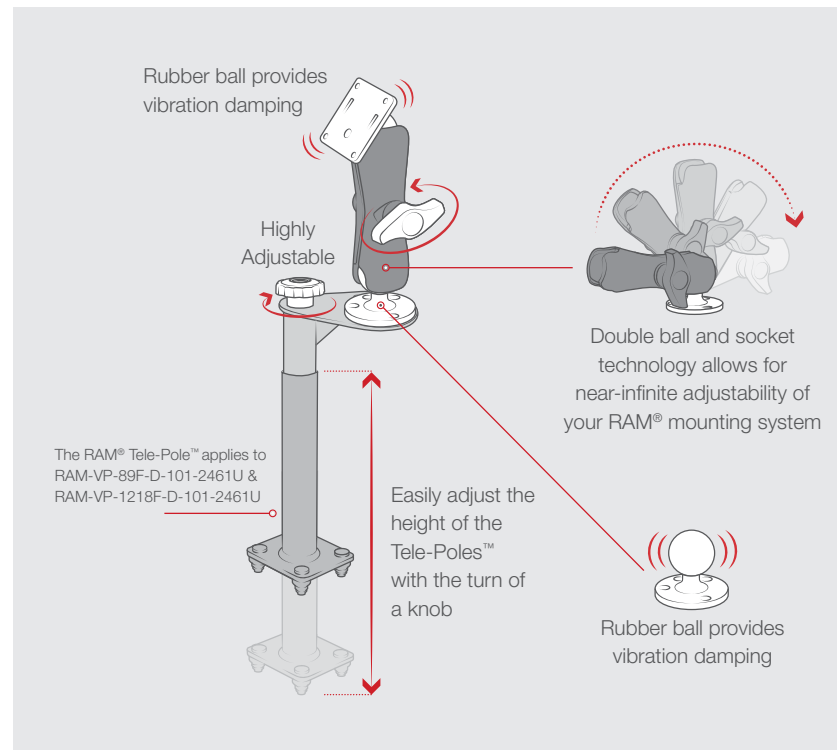
RAM-VP-TTMF12-D-101-2461U
12" Upper Flange Pole with
D Size 75x75mm VESA Mount



RAM-VP-89F-D-101-2461U
RAM® Tele-Pole™ with 8" & 9"
Poles and 75mm VESA Mount



RAM-VP-1218F-D-101-2461U
RAM® Tele-Pole™ with 12" & 18"
Poles and 75mm VESA Mount



COMPATIBLE CHARGERS



RAM-GDS-CHARGE-V9U
GDS® 20-60VDC Input (12VDC Output)
Hardwire Charger with Male DC 5.5mm



RAM-GDS-CHARGE-V10U
GDS® 10-32VDC Input (12VDC Output)
Hardwire Charger with Male DC 5.5mm