



User Manual

D32Q02F



Important Safety Precautions

1. Please read all the instructions carefully before using this product.
2. BE SURE TO unplug the power cord when cleaning LCD. Never clean it with liquid detergent or spraying detergent, but wipe it with wet soft cloth. If it is still not clean, please use special detergent for LCD.
3. DO NOT use accessories not authorized by the manufacturer, other wise they may incur danger.
4. When disconnecting the power cord of display or power adapter, always remember to hold the plug instead of puling the wire to unplug the power cord.
5. Keep the display away from water sources such as bath tub, washbasin, sink or washing machine. DO NOT place the display on wet floor or near a swimming pool, or press LCD surface with fingers or hard objects.
6. The grooves and openings on the back and bottom of the shell are for ventilation purpose and also for guaranteeing the reliability of the elements and preventing them from overheating; in order to prevent the vents from blocking; DO NOT place the display on bed, sofa, carpet or other similar surfaces; DO NOT place the display near to or on heat radiator or heater; DO NOT put the display into embedded device, unless it is provided with adequate ventilating equipment.
7. Only the type of power source indicated on the nameplate applies to this display. If you have any questions on the type of power source you use, please consult the dealer of the display or local administration of power supply.
8. Since there is high voltage or other risks when the shell is opened or moved, please DO NOT repair the display by yourself, but request qualified maintenance staff to carry out.
9. In one of the following cases, please unplug the display or the power adapter and ask qualified maintenance staff for help:
 - a. The power cord or the plug is impaired or worn.
 - b. The display falls off or the shell is damaged.
 - c. The display is obviously abnormal.
10. Please place the display in a cool, dry and well ventilated place.

1. Product Description

1.1 Packing list

Please check the following items in the packing case before installation:

- One LCD display (including the base)
- One cord, one AC adaptor
- One user manual, One warranty card

If any of above items is missing, please contact with the dealer.

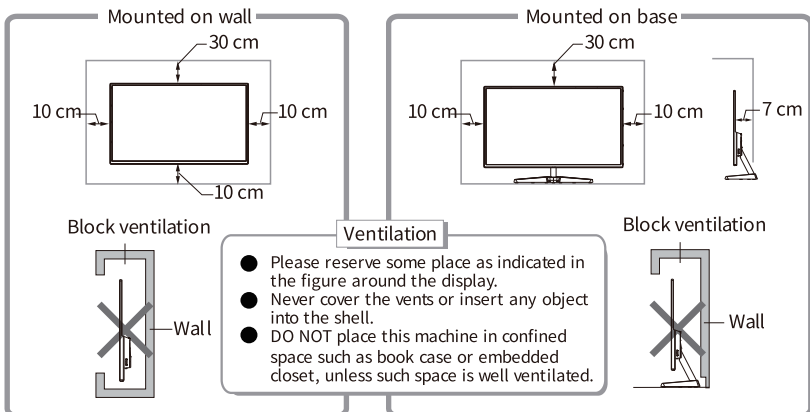
Attention: Accessories shall be subject to the real conf

2. Installation and Connection

2.1 Display installation

Installation instructions

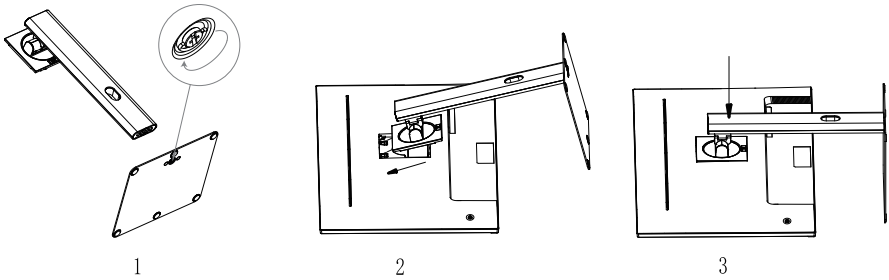
- This machine should be installed adjacent to an easily luggable AC power socket.
- For the sake of safety, we suggest that suitable wall-mounted bracket or base be used.
- In order to prevent injury, this machine shall be placed on a stable and level surface or fixed on a firm wall.
- For wall-mounting, please ask a professional to do so. Improper installation may cause instability of this machine.
- DO NOT place this machine in places with mechanical vibration.
- DO NOT place this machine in places where insects are accessible.
- DO NOT install this machine directly opposite to air-conditioner, otherwise its inner panel may bedewed and cause failure.
- DO NOT place this machine in places with strong electromagnetic field, otherwise it may be interfered by the electromagnetic wave and get damaged.



2.2 Instruction of Base Installation

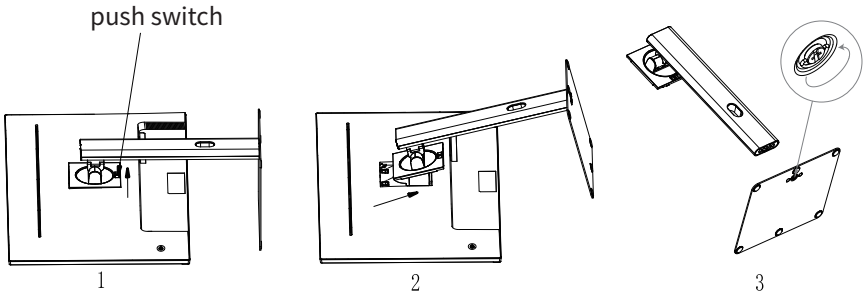
1. Base installation steps:

- ① Connect the base and stand with the screws in the base.
- ② Align the two hooks on the base with the two holes on the machine, tilt them in the direction of the arrow and install them into the machine hole position, as shown in the Figure 2.
- ③ Press down in the direction of the arrow.



When it is necessary to disassemble the entire base, do the following steps:

- ① Push the slider on the VESA cover of the base upwards, as shown in Figure 1,
- ② Tilt and remove in the direction of the arrow,
- ③ Loosen the screws from the base and remove the base.



Installation Tips

- If you need to remove the base, first place the monitor face down in the original packaging protection material to avoid screen damage;
- For a base with quick disassembly and assembly functions, press the release button to remove the base in the reverse operation.

2.3 Signal line connection

Connect the signal line to output interfaces signal of VGA/HDMI/DP signals of PC, and the connect the other end of the signal line to the corresponding signal input port of the display.

2.4 Audio output

This machine supports earphone audio output.

3. Operation of Display

3.1 Safety protection

When the video signals of PC exceeds the frequency range of the display, the horizontal and field synchronizing signals will be shut down to protect the display. Then, you have to set the PC output frequency to an acceptable range so as to make the display work normally.

4. Technical Specifications of Product

Panel size	31.5"
Optimal working resolution	2560×1440@75Hz
Power input	12V $\bar{\bar{}}$ 4.5A
Power supply management system : Normal working Standby	\leq 54W \leq 0.5W
Requirements for working environment Altitude Working temperature and humidity Warehousing temperature and humidity	\leq 5000m 0°C~40°C 20%~85% -10°C~60°C 10%~90%

5. Basic Troubleshooting

Phenomenon	Troubleshooting
1. Light out/power indicator light is off	Check whether the display and the socket are well connected to power, and whether the display is in the shutdown mode.
2. Image blurring, over-large, over-small, etc.	Enter the menu “Image Setting” and select “Auto Image Adjust” to automatically adjust the display.(Note: This function is only applicable to VGA signal input)
3. Image over dark	Enter the menu “Brightness and Contrast” to adjust the brightness and contrast of the display.
4. Display over heat	Leave at least 5cm of distance for ventilation around the display and do not place articles on the display.
5. Dark/ light spots when powering on	This is a normal phenomenon. It is due to the backlight illuminates unevenly at the initial phase of powering on caused by temperature difference. The backlight can illuminates normally after 20 minutes, and then the dark/light spots will be corrected.
6. Image distortion, blinking, shaking	Check computer setting, select the correct resolution and re-adjust the refresh frequency.
7. Power off noise	It is a normal phenomenon caused by display discharging in the process of powering off.



The terms HDMI, HDMI High-Definition Multimedia Interface, HDMI trade dress and the HDMI Logos are trademarks or registered trademarks of HDMI Licensing Administrator, Inc.

