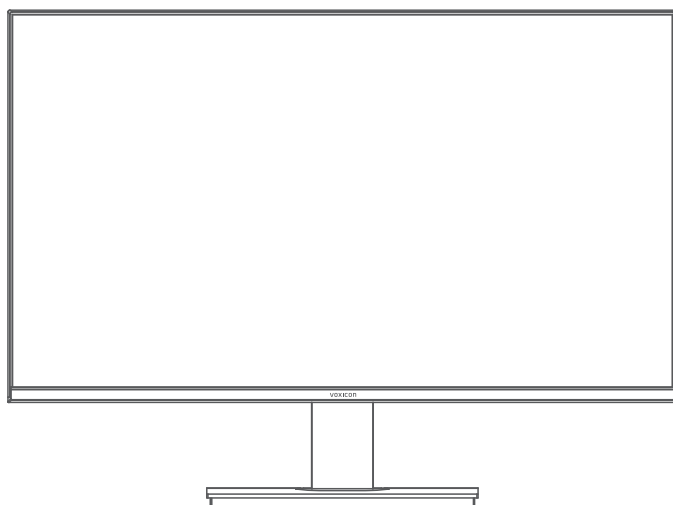




User Manual

D24FAPK

D27FAPK



Important Safety Precautions

1. Please read all the instructions carefully before using this product.
2. BE SURE TO unplug the power cord when cleaning LCD. Never clean it with liquid detergent or spraying detergent, but wipe it with wet soft cloth. If it is still not clean, please use special detergent for LCD.
3. DO NOT use accessories not authorized by the manufacturer, otherwise they may incur danger.
4. When disconnecting the power cord of display or power adapter, always remember to hold the plug instead of pulling the wire to unplug the power cord.
5. Keep the display away from water sources such as bath tub, washbasin, sink or washing machine. DO NOT place the display on wet floor or near a swimming pool, or press LCD surface with fingers or hard objects.
6. The grooves and openings on the back and bottom of the shell are for ventilation purpose and also for guaranteeing the reliability of the elements and preventing them from overheating; in order to prevent the vents from blocking; DO NOT place the display on bed, sofa, carpet or other similar surfaces; DO NOT place the display near to or on heat radiator or heater; DO NOT put the display into embedded device, unless it is provided with adequate ventilating equipment.
7. Only the type of power source indicated on the nameplate applies to this display. If you have any questions on the type of power source you use, please consult the dealer of the display or local administration of power supply.
8. Since there is high voltage or other risks when the shell is opened or moved, please DO NOT repair the display by yourself, but request qualified maintenance staff to carry out.
9. In one of the following cases, please unplug the display or the power adapter and ask qualified maintenance staff for help:
 - a. The power cord or the plug is impaired or worn.
 - b. The display falls off or the shell is damaged.
 - c. The display is obviously abnormal.
10. Please place the display in a cool, dry and well ventilated place.
11. Store the display in temperature range of $-15^{\circ}\text{C} \sim 45^{\circ}\text{C}$, beyond which the display may be damaged permanently.

1. Product Description

1.1 General

As a high-performance smart multi-frequency scanning display, it adopts active-matrix TFT-LED backlight liquid screen and is controlled with MCU digital technology. With compact and thin appearance and build-in power supply, it is suitable for narrow work space.

1.2 Packing list

Please check the following items in the packing case before installation:

- One LCD display (including the base and the supporting Column)
- One HDMI cord, one DC adaptor
- One user manual

If any of above items is missing, please contact with the dealer.

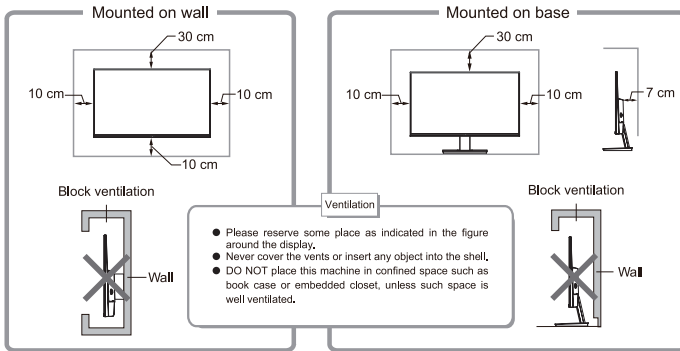
Attention: Accessories shall be subject to the real configuration. Please keep all packing materials well for product transport in the future.

2. Installation and Connection

2.1 Display installation

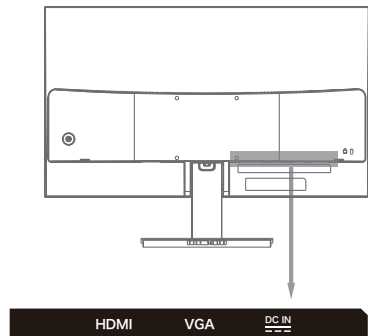
Installation instructions

- This machine should be installed adjacent to an easily pluggable DC power socket.
- For the sake of safety, we suggest that suitable wall-mounted bracket or base be used.
- In order to prevent injury, this machine shall be placed on a stable and level surface or fixed on a firm wall.
- For wall-mounting, please ask a professional to do so. Improper installation may cause instability of this machine.
- DO NOT place this machine in places with mechanical vibration.
- DO NOT place this machine in places where insects are accessible.
- DO NOT install this machine directly opposite to air-conditioner, otherwise its inner panel may bedewed and cause failure.
- DO NOT place this machine in places with strong electromagnetic field, otherwise it may be interfered by the electromagnetic wave and get damaged.



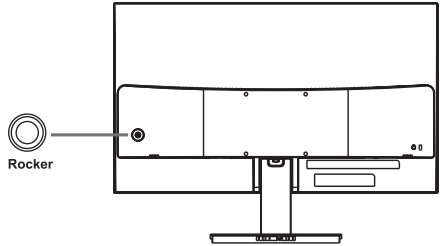
2.2 Signal line connection

Connect the signal line to output interfaces signal of HDMI / VGA signals of PC, and then connect the other end of the signal line to the corresponding signal input port of the display.



3. Operation of Display

The OSD control buttons are shown as the figure. Models of the same product series are only different in button position and panel pattern, please refer to the practical model.



3.1 Introduction to rocker functions

1		Up	With main menu, move the cursor up to select the submenu or item. Without main menu, call out the pop-up window of brightness settings.
2		Down	With main menu, move the cursor down to select the submenu or item. Without main menu, call out the pop-up window of brightness settings.
3		Left	With main menu, return back to the upper-level menu. Without main menu, access the main menu settings.
4		Right	With main menu, enter the selected submenu or item. Without main menu, access the main menu settings.
5		Middle	In standby mode, short press middle to turn on the monitor. In working status, long press middle to turn the monitor into standby mode. With main menu in working status, short press middle to confirm or enter the selected submenu or item. Without main menu in working status, short press middle to access main menu settings.

3.2 Safety protection

When the video signals of PC exceeds the frequency range of the display, the horizontal and field synchronizing signals will be shut down to protect the display. Then, you have to set the PC output frequency to an acceptable range so as to make the display work normally.

4. Basic Troubleshooting

Phenomenon	Troubleshooting
1.The monitor can't be turned on.	<ul style="list-style-type: none"> • Check if the power adapter is correctly connected to the monitor and the power outlet. • Press the POWER ϕ control button on the monitor.
2.The picture is dark.	<ul style="list-style-type: none"> • Adjust the brightness and contrast settings.
3.Picture is jittering and rippling.	<ul style="list-style-type: none"> • Keep the monitor far away from other electronic devices to avoid electronic interference.
4.Power indicator is lit, but there is no picture or no signal.	<ul style="list-style-type: none"> • Check if your PC is turned on. • Check if the graphic card is correctly inserted in your PC. • Check if the signal cable is connected correctly and fully to the monitor and your PC. • Check if the signal cable is damaged.
5.“Out of Range” is displayed on the monitor.	<ul style="list-style-type: none"> • Check if the graphic card is correctly inserted in your PC. • Check if the signal cable is connected correctly and fully to the monitor and your PC. • Check if the signal cable is damaged.

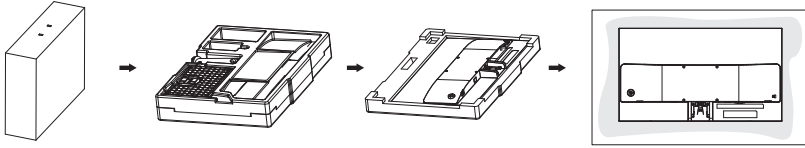
5. Technical Specifications of Product

Model	D24FAPK	D27FAPK
Panel size	23.8"	27"
Optimal working resolution	1920x1080@75Hz	1920x1080@75Hz
Power input	DC 12V / 2A	DC 12V / 2.5A
Barometric pressure	86Kpa~104Kpa	
Working temperature and humidity	5°C~40°C 20%~80%	
Warehousing temperature and humidity	-15°C~45°C 10%~90%	
Dimension without stand(WxDxH)	542.0 x 41.7 x 317.9 mm	613.6 x 44.8 x 360.9 mm
Dimension with stand(WxDxH)	542.0 x 150 x 401.7 mm	613.6 x 178 x 444.6 mm

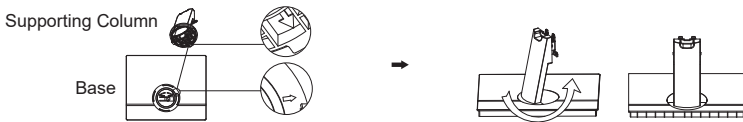
Remarks: All technical specifications in this manual and external packages are subject to change without further notice. In case that there is subtle difference between this manual and practical operation, please follow practical operation.

6. Instruction of Base Installation

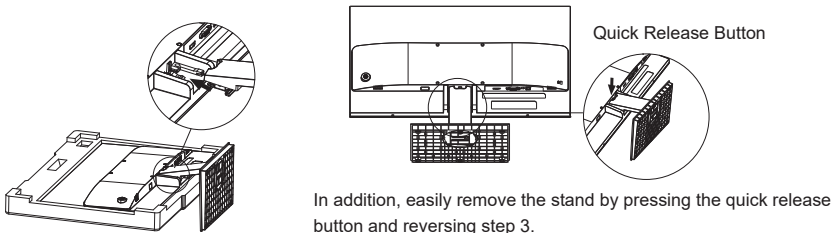
Step 1: Take out monitor with pylon, remove the pylon, and then carefully put the monitor (screen downward) on a stable and flat table with a soft cloth or cushion on it.



Step 2: Vertically insert the base top into the bottom end of the supporting column, and align the arrow icon of the column's bottom with the slot of the base's arrow icon, then assemble them by rotating the supporting column.

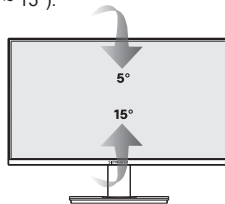


Step 3: Align and insert the upper tabs on the hinge of the stand into the slot on the monitor back. Then push the column in the direction of the arrow until the lower tabs are fully locked in position.



Step 4: Connect the signal cable and power cord.

Step 5: Slightly tilt the monitor upward or downward for an appropriate viewing angle. The direction of monitor can be adjusted (tilted by -5° ~ 15°).



Note: Some of the contents in this manual may differ slightly from the final product, and the later shall be referred to.

While adjusting the monitor, please avoid using excessive force and hitting other parts or objects to prevent damage.

Name and content of toxic and harmful substance or element contained in this product

Name of component	Toxic and harmful substance or element					
	Pb	Hg	Cd	Cr6 ⁺	PBB	PBDE
Display	×	○	○	○	○	○
Plastic shell	○	○	○	○	○	○
Circuit board module*	×	○	○	○	○	○
Power cord and connecting line	×	○	○	○	○	○
Metal parts	○	○	○	○	○	○
Packing materials*	○	○	○	○	○	○
Speaker (optional)	○	○	○	○	○	○
Accessories*	○	○	○	○	○	○

This table is prepared in accordance with SJ/T11364.

*: The circuit board module includes PCB and constitutive electronic elements;

The packing materials include packing case, EPS and so on;

Other accessories include manual and so on;

○: Indicate that the content of toxic and harmful substance in all homogeneous materials of this part is below the limit stipulated in GB/T26572-2011.

×: Indicate that the content of toxic and harmful substance in at least one homogeneous material of this part exceeds the limit stipulated in GB/T26572-2011.

This table indicates that this machine contains harmful substance. The data is provided by material suppliers according to material type and verified by us. The harmful substance contained in some materials is irreplaceable with present technology, and we are always endeavoring to make improvement.

The eco-friendly service life of this product is 10 years. See the right figure for the symbol of limited use of harmful substance.



The service life of this product is valid only when it is used in normal service conditions specified by user manual.

Informative Instruction of Regulation on Control of Recycle and Disposal of Waste Electric and Electronic Products

In order to better care for and protect the earth, when this product is not needed any longer or its service life is ended, please deliver it to a local plant with state-certified recycle and disposal qualification pursuant to relevant national laws and regulations on recycle and disposal of waste electric and electronic products.

