

**DELL** Technologies

**LATITUDE**

**7330/7430/7530**

Premium look. Premium options.



LATITUDE

# 7330/7430/7530

Premium look. Premium options.

A broad range of premium features provide an amazing screen experience, intelligent performance, built-in security & privacy.

Ideal for Team Leaders, Directors, Project/Product Managers, etc, driven to connect teams and ensure collaboration. They need high performance with seamless collaboration and connectivity for at-the-desk or on-the-go versatility.



**ExpressSign-in** Wake your system when you approach and lock it when you step away.

**Enhanced FHD IR Camera and Privacy** Look great on every video call with best-in-class FHD high-res camera and camera shutter.

**Intelligent Audio with neural noise cancellation** Collaborate confidently with AI-based background noise elimination.

**Premium Materials and Finishes** Ultralight Magnesium 13" & Carbon Fiber or Aluminum choices across 7000.

**New 13" Ultralight choice** 13" starts at 0.967 kg / 2.13 lbs

**Premium Panels** 400 Nit, Low Blue Light FHD displays with available 4K (14"&15") or SafeScreen (14").

Utilize 2 or more networks at once with **ExpressConnect, world's 1st simultaneous multi-network connection** for faster data and video downloads<sup>17</sup>.

**New intelligent privacy features: Onlooker Detection** – alerts you of onlookers and protects data on screen. You can texturize screen or enable SafeScreen if available.  
**Look-away Detect** – knows when you're not looking at screen & dims for privacy and battery savings.

**Laptop or 2-in-1** Simplified ordering and management of 2-in-1 available on the same system BIOS.

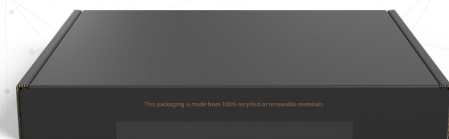
**Up-leveled Audio** Hear every detail in your meetings with top firing speakers on 15.6" and up-leveled audio on 13"/14".

**WiFi6E & 4G/5G option** Work from anywhere at fastest speeds, now with 5G (14").

**Work anywhere with less recharging** with a whole day battery life & ExpressCharge.

High performance with advanced thermal design Improved thermals and up to **30% quieter<sup>35</sup>** with available **Intel vPro<sup>®</sup>, 12th Gen Intel<sup>®</sup> up to Core™ i7 P-series (28W) processors**, offering up to 32GB LPDDR5 (14"&15").

**Most innovative use of bio-based & recycled materials in 14" and 15" premium commercial laptops**, in specific parts with up to 39% in bottom bumpers, up to 50% recycled plastic in the battery frame, up to 35% in the palm rest and up to 18% recycled carbon fiber in select lids<sup>18</sup>.



New 100% recycled or renewable packaging<sup>41</sup> Easy to open, uses less carbon to ship.

See important information on last page

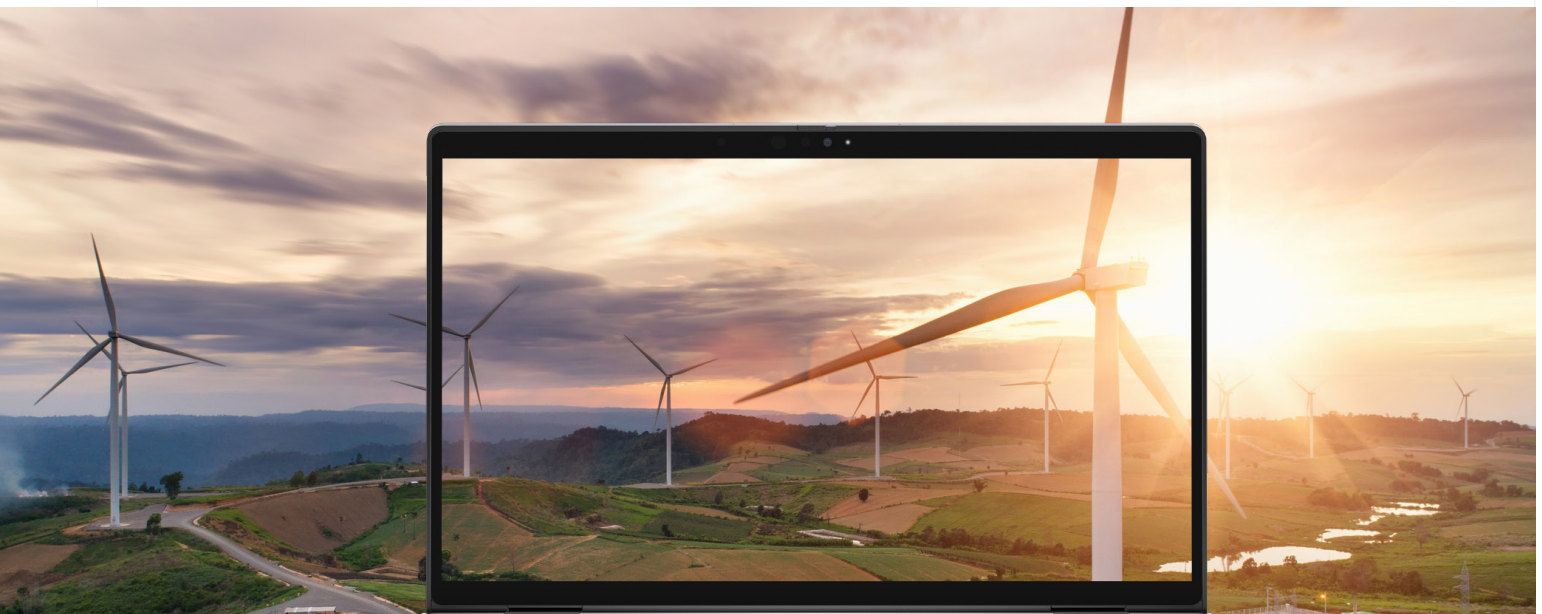
LATITUDE

# 7330/7430/7530

## Sustainability on Dell Latitude

Leading the industry in sustainable practices in our products, packaging and supply chain.

**OUR MOST SUSTAINABLE LATITUDE PORTFOLIO: WORKING TOWARD OUR GOALS, SO YOU CAN MEET YOURS.**



### Packaging Innovation

100%

Recycled or renewable packaging across all new Latitude PCs. Easy-to-open and uses less carbon to ship. It's the 1<sup>st</sup> design that already meets our 2030 moonshot goals.<sup>41</sup>

### Design

1<sup>st</sup>

14" & 15" premium commercial PCs to use reclaimed carbon fiber (18%) & bio-based rubber (39%) bottom bumpers.<sup>19</sup>

### Recycling e-waste



Securely, responsibly retire your IT equipment with Dell regardless of brand, in support of a circular economy. Learn more at [Dell.com/Recycle](https://Dell.com/Recycle).

## LATITUDE HAS

90+

EPEAT registered products<sup>20</sup>



100%

EPEAT Gold in 2022 products



35+

TCO 8 certified configurations



8.0

ENERGY STAR<sup>®</sup> throughout the portfolio



LATITUDE

# 7330/7430/7530

## Dell Optimizer

We make it intelligent. You make it yours.

Dell Optimizer revolutionizes the way you work by fueling the world's most intelligent PCs<sup>26</sup>. It is a business, AI-based optimization software that learns and responds to the way you work and is designed to automatically improve application performance, battery run-time, audio settings and privacy - all in the background while you're working.

Accomplish anything with built-in intelligence that learns and adapts.



### Intelligent privacy anywhere

Onlooker detection lets you texturize your screen when an intruder is detected, and Look Away Detect darkens the PC screen based on user behavior.



### Extended power

ExpressCharge analyzes your power usage habits to improve PC battery utilization, extend run time, and charge your system faster.



### Unmatched connectivity

ExpressConnect<sup>30</sup> provides the world's first simultaneous multi-network connection<sup>31</sup> that joins the best network<sup>32</sup> available.



### Faster sign-in

ExpressSign-in's<sup>27</sup> camera based proximity detection identifies your presence to wake on approach before Windows Hello logs you in via facial recognition.



### Enhanced audio

Intelligent Audio delivers audio and mic enhancements and reduces background noise using Neural noise cancellation.



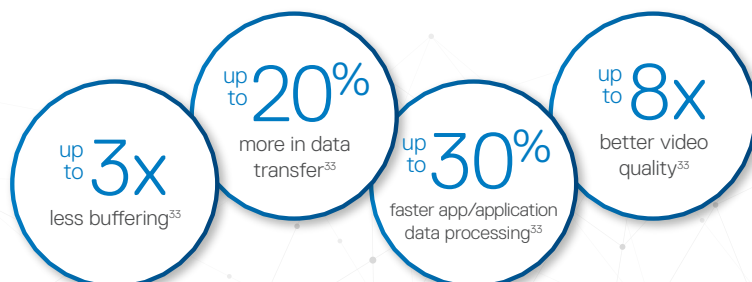
### Improved performance

ExpressResponse<sup>28</sup> analyzes how you use your preferred apps<sup>29</sup> to boost performance.

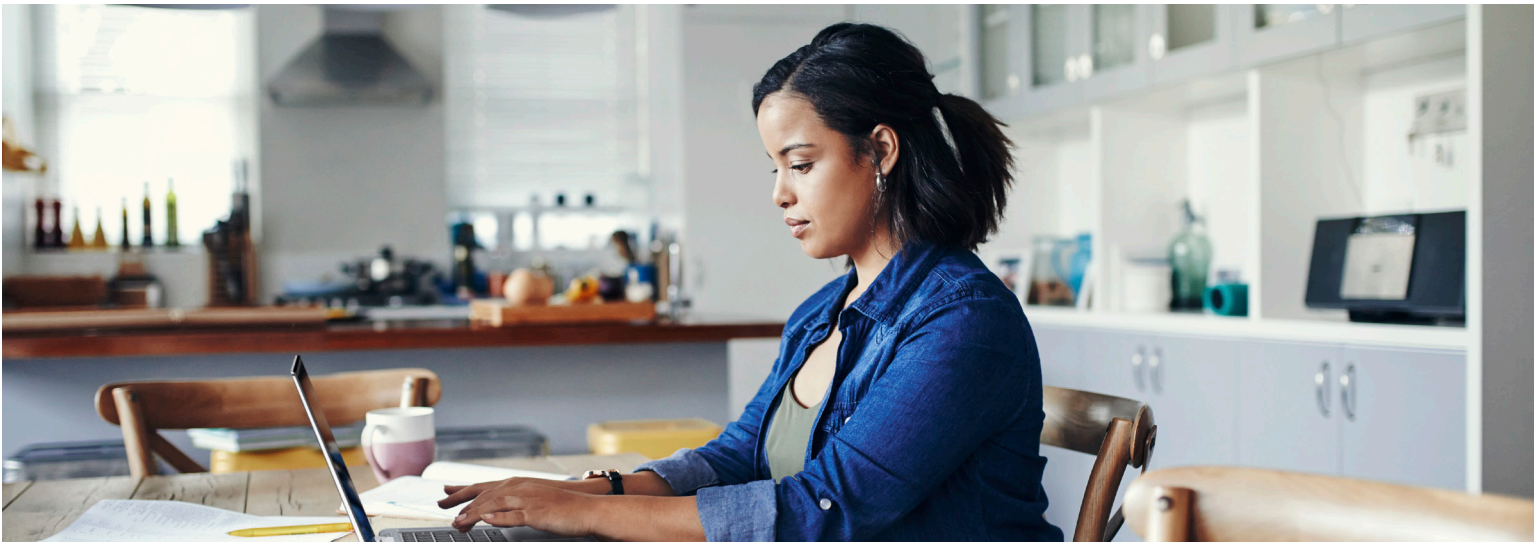


### Simplified manageability

Elevate work experience with an easy-to-manage application that provides a seamless experience for both end-users and IT decision-makers.



See important information on last page



## RECOMMENDED SOLUTIONS



**34" Curved Video Conferencing Monitor - C3422WE**

Bring your meetings to life on this 34-inch curved WQHD monitor with an integrated IR camera, dual 5W speakers and a dedicated, one-touch Teams button.



**Thunderbolt 4 Dock - WD22TB4**

Experience lightning fast charging and Thunderbolt 4 connectivity with this flexible and powerful modular dock.



**Premier Multi-Device Wireless Keyboard & Mouse - KM7321W**

Multi-task seamlessly across 3 devices with this premium full-size keyboard and sculpted mouse combo featuring programmable shortcuts and 36 months battery life.<sup>42</sup>



**14" Portable Monitor - C1422H**

Experience dual-screen productivity anywhere with Dell's first-ever 14" portable monitor.



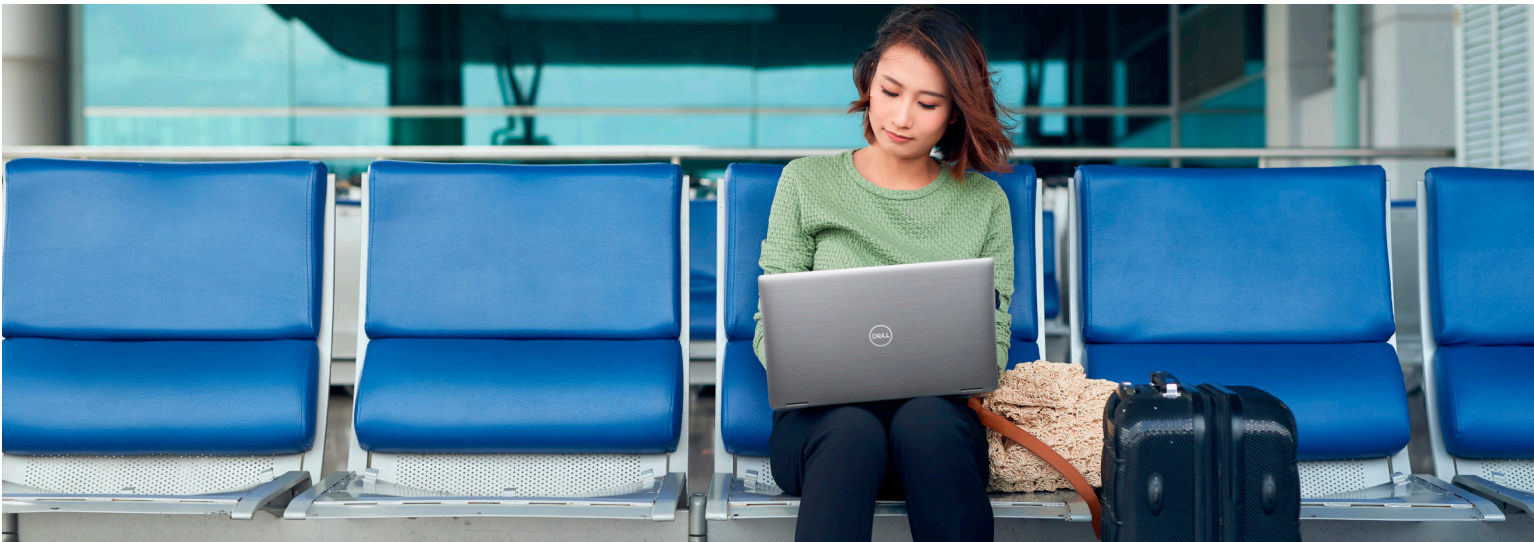
**Dell Speakerphone with Multiport Adapter**

Multiport adapter with integrated speakerphone offers an all-in-one connectivity and conferencing solution.



**Notebook Power Bank Plus – USB C, 65Wh - PW7018LC**

With fast high-power delivery of up to 65Wh, this power bank can charge the widest range of USB-C laptops, and mobile devices.



## RECOMMENDED SOLUTIONS



**Dell EcoLoop Pro Sleeve (L) - CV5623**  
(15" models)

Eco-friendly and dependable sleeve to keep your laptop securely protected on the go.



**Dell EcoLoop Pro Sleeve (S) - CV5423**  
(13/14" models)

Eco-friendly and dependable sleeve to keep your laptop securely protected on the go.



**Dell Premier Briefcase 15 - PE1520C**

Earth-friendly briefcase thoughtfully designed to let you breeze through TSA checkpoint without removing your laptop.



**Dell Premier Rechargeable Active Pen - PN7522W**

Active Pen with a Tile location tracker providing long battery life on a single charge.



**Dell Premier Slim Backpack 15 - PE1520PS**

Travel light while making a positive impact on the environment by selecting the compact, eco-friendly Dell Premier Slim Backpack 15 (PE1520PS) with EVA foam cushioning to protect your laptop from impact.



**Dell USB-C Mobile Adapter - DA310**

Compact and portable 7-in-1 USB-C mobile adapter provides superb video, data connectivity and up to 90W power pass-through to your PC.



**Dell Premier Rechargeable Wireless Mouse - MS7421W**

Experience a mobile mouse with best-in-class rechargeable power and productivity features in an accentuated design. Long lasting battery life of up to 6 months on a full charge.<sup>34</sup>

# 7330/7430/7530

FEATURE	TECHNICAL SPECIFICATION	TECHNICAL SPECIFICATION	TECHNICAL SPECIFICATION
<b>MODEL NUMBER<sup>1</sup></b>	Latitude 7330 (laptop or 2-in-1)	Latitude 7430 (laptop or 2-in-1)	Latitude 7530 (laptop)
<b>PROCESSOR OPTIONS<sup>1</sup></b>	12 <sup>th</sup> Gen Intel® Core™ processors up to i7 U15 vPro®	12 <sup>th</sup> Gen Intel® Core™ processors up to i7 U15 vPro® 12 <sup>th</sup> Gen Intel® Core™ processors up to i7 P28 vPro®	12 <sup>th</sup> Gen Intel® Core™ processors up to i7 U15 vPro® 12 <sup>th</sup> Gen Intel® Core™ processors up to i7 P28 vPro®
<b>OPERATING SYSTEM<sup>1</sup></b>	Microsoft® Windows 10 Pro 64-bit (11 License) Microsoft® Windows 11 Home 64-bit Microsoft® Windows 11 Pro 64-bit Ubuntu® 20.04 LTS, 64-bit (Laptop only)	Microsoft® Windows 10 Pro 64-bit (11 License) Microsoft® Windows 11 Home 64-bit Microsoft® Windows 11 Pro 64-bit Ubuntu® 20.04 LTS, 64-bit (Laptop only)	Microsoft® Windows 10 Pro 64-bit (11 License) Microsoft® Windows 11 Home 64-bit Microsoft® Windows 11 Pro 64-bit Ubuntu® 20.04 LTS, 64-bit (Laptop only)
<b>MEMORY OPTIONS<sup>1,2,3</sup></b>	Up to 32 GB, DDR4, 3200 MHz, integrated, dual channel	Up to 32 GB, LPDDR5, 4800 MHz, integrated, dual channel Up to 32 GB, DDR4, 3200 MHz, integrated, dual channel	Up to 32 GB, LPDDR5, 4800 MHz, integrated, dual channel Up to 32 GB, DDR4, 3200 MHz, integrated, dual channel
<b>CHIPSET<sup>1</sup></b>	Integrated with the processor	Integrated with the processor	Integrated with the processor
<b>INTEL RESPONSIVENESS TECHNOLOGIES<sup>1,7</sup></b>	Intel® Rapid Storage Technology	Intel® Rapid Storage Technology	Intel® Rapid Storage Technology
<b>GRAPHICS<sup>1,15</sup></b>	Intel® Iris® Xe Graphics with Intel® Core™ i5/i7 processors and dual-channel memory configuration	Intel® Iris® Xe Graphics with Intel® Core™ i5/i7 processors and dual-channel memory configuration	Intel® Iris® Xe Graphics with Intel® Core™ i5/i7 processors and dual-channel memory configuration
<b>DISPLAY<sup>1</sup></b>	<p><b>2-in-1</b> 16:9 13.3" FHD (1920x1080) WVA Touch, 300 nits, sRGB 100%, Anti-reflective and Anti-smudge, Corning® Gorilla Glass® 6 DXC, Super Low Power, Active Pen Support</p> <p><b>Laptop</b> 16:9 13.3" FHD (1920 x 1080) WVA Non-touch, 250 nits, NTSC 45%, Anti-glare</p> <p>16:9 13.3" FHD (1920 x 1080) WVA Non-Touch, 400 nits, sRGB 100%, Anti-glare, Super Low Power, ComfortView Plus Low Blue Light</p> <p>16:9 13.3" FHD (1920 x 1080) WVA Non-Touch, 400 nits, sRGB 100%, Anti-glare, Super Low Power, ComfortView Plus Low Blue Light, <b>Ultralight</b></p> <p>16:9 13.3" FHD (1920 x 1080) WVA Touch, 300 nits, NTSC 72%, Anti-glare</p>	<p><b>2-in-1</b> 16:9 14.0" FHD (1920x1080) WVA Touch, 300 nits, sRGB 100%, Anti-reflective and Anti-smudge, Corning® Gorilla Glass® 6 DXC, Super Low Power, Active Pen Support</p> <p><b>Laptop</b> 16:9 14.0" FHD (1920 x 1080) WVA Non-touch, 250 nits, NTSC 45%, Anti-glare</p> <p>16:9 14.0" FHD (1920 x 1080) WVA Non-Touch, 400 nits, sRGB 100%, Anti-glare, Super Low Power, ComfortView Plus Low Blue Light</p> <p>16:9 14.0" FHD (1920 x 1080) WVA Touch, 300 nits, NTSC 72% Anti-glare</p> <p>16:9 14.0" FHD (1920 x 1080) WVA Touch, 300 nits, sRGB 100%, Anti-glare, Digital Privacy SafeScreen</p> <p>16:9 14.0" UHD (3840 x 2160) WVA Non-Touch, 400 nits, sRGB 100%, Anti-glare, Super Low Power, ComfortView Plus Low Blue Light</p>	<p><b>Laptop</b> 16:9 15.6" FHD (1920 x 1080) WVA Non-touch, 250 nits, NTSC 45%, Anti-glare</p> <p>16:9 15.6" FHD (1920 x 1080) WVA Non-Touch, 400 nits, sRGB 100%, Anti-glare, Super Low Power, ComfortView Plus Low Blue Light</p> <p>16:9 15.6" FHD (1920 x 1080) WVA Touch, 300 nits, NTSC 72%, Anti-glare</p> <p>16:9 15.6" UHD (3840 x 2160) WVA Non-Touch, 400 nits, sRGB 100%, Anti-glare, Super Low Power, ComfortView Plus Low Blue Light</p>
<b>STORAGE OPTIONS<sup>1,3</sup></b>	up to 512 GB, M.2, PCIe NVMe, SSD, class 35 256 GB, M.2, PCIe NVMe, SED, class 35 up to 1 TB, M.2, PCIe NVMe, SSD, class 40 512 GB, M.2, PCIe NVMe, SED, class 40	up to 512 GB, M.2, PCIe NVMe, SSD, class 35 256 GB, M.2, PCIe NVMe, SED, class 35 up to 1 TB, M.2, PCIe NVMe, SSD, class 40 512 GB, M.2, PCIe NVMe, SED, class 40	up to 512 GB, M.2, PCIe NVMe, SSD, class 35 256 GB, M.2, PCIe NVMe, SED, class 35 up to 1 TB, M.2, PCIe NVMe, SSD, class 40 512 GB, M.2, PCIe NVMe, SED, class 40
<b>SECURITY<sup>1</sup></b>	<p>TPM 2.0 FIPS 140-2 Certified, TCG Certified Optional Windows Hello Compliant Fingerprint Reader in power button</p> <p>Optional Security Hardware Authentication Bundles 1: Touch Fingerprint Reader (in Power Button) with Control Vault 3.0 Advanced Authentication with FIPS 140-2 Level 3 Certification 2: Contacted Smart Card with Control Vault 3.0 Advanced Authentication with FIPS 140-2 Level 3 Certification 3: Touch Fingerprint Reader (in Power Button) and Contacted Smart Card with Control Vault 3.0 Advanced Authentication with FIPS 140-2 Level 3 Certification 4: Contacted Smart Card, Contactless Smart Card NFC and Control Vault 3.0 Advanced Authentication with FIPS 140-2 Level 3 Certification 5: Touch Fingerprint Reader (in Power Button), Contacted Smart Card, Contactless Smart Card NFC and Control Vault 3.0 Advanced Authentication with FIPS 140-2 Level 3 Certification</p> <p>Optional Face IR camera (Windows Hello compliant) with ExpressSign-in (Camera Sensing) Intelligent Privacy (onlooker detection with screen texturizing and adaptive dimming) Camera Shutter</p> <p>Dell Client Command Suite: On-Prem Dell Client Command Suite: Cloud Dell Optimizer Dell Power Manager Support Assist for PCs Support Assist OS Recovery (Excalibur) Dell SafeBIOS - Off Host Verification Dell SafeBIOS - Indicators of Attack Dell SafeID Vmware Carbon Black Endpoint Standard Vmware Carbon Black Endpoint Advanced Vmware Carbon Black Endpoint Enterprise</p>	<p>TPM 2.0 FIPS 140-2 Certified, TCG Certified Optional Windows Hello Compliant Fingerprint Reader in power button</p> <p>Optional Security Hardware Authentication Bundles 1: Touch Fingerprint Reader (in Power Button) with Control Vault 3.0 Advanced Authentication with FIPS 140-2 Level 3 Certification 2: Contacted Smart Card with Control Vault 3.0 Advanced Authentication with FIPS 140-2 Level 3 Certification 3: Touch Fingerprint Reader (in Power Button) and Contacted Smart Card with Control Vault 3.0 Advanced Authentication with FIPS 140-2 Level 3 Certification 4: Contacted Smart Card, Contactless Smart Card NFC and Control Vault 3.0 Advanced Authentication with FIPS 140-2 Level 3 Certification 5: Touch Fingerprint Reader (in Power Button), Contacted Smart Card, Contactless Smart Card NFC and Control Vault 3.0 Advanced Authentication with FIPS 140-2 Level 3 Certification</p> <p>Optional Face IR camera (Windows Hello compliant) with ExpressSign-in (Camera Sensing) Intelligent Privacy (onlooker detection with screen texturizing or SafeScreen activation and adaptive dimming) Camera Shutter</p> <p>Dell Client Command Suite: On-Prem Dell Client Command Suite: Cloud Dell Optimizer Dell Power Manager Support Assist for PCs Support Assist OS Recovery (Excalibur) Dell SafeBIOS - Off Host Verification Dell SafeBIOS - Indicators of Attack Dell SafeID Vmware Carbon Black Endpoint Standard Vmware Carbon Black Endpoint Advanced Vmware Carbon Black Endpoint Enterprise</p>	<p>TPM 2.0 FIPS 140-2 Certified, TCG Certified Optional Windows Hello Compliant Fingerprint Reader in power button</p> <p>Optional Security Hardware Authentication Bundles 1: Touch Fingerprint Reader (in Power Button) with Control Vault 3.0 Advanced Authentication with FIPS 140-2 Level 3 Certification 2: Contacted Smart Card with Control Vault 3.0 Advanced Authentication with FIPS 140-2 Level 3 Certification 3: Touch Fingerprint Reader (in Power Button) and Contacted Smart Card with Control Vault 3.0 Advanced Authentication with FIPS 140-2 Level 3 Certification 4: Contacted Smart Card, Contactless Smart Card NFC and Control Vault 3.0 Advanced Authentication with FIPS 140-2 Level 3 Certification 5: Touch Fingerprint Reader (in Power Button), Contacted Smart Card, Contactless Smart Card NFC and Control Vault 3.0 Advanced Authentication with FIPS 140-2 Level 3 Certification"</p> <p>Optional Face IR camera (Windows Hello compliant) with ExpressSign-in (Camera Sensing) Intelligent Privacy (onlooker detection with screen texturizing and adaptive dimming) Camera Shutter</p> <p>Dell Client Command Suite: On-Prem Dell Client Command Suite: Cloud Dell Optimizer Dell Power Manager Support Assist for PCs Support Assist OS Recovery (Excalibur) Dell SafeBIOS - Off Host Verification Dell SafeBIOS - Indicators of Attack Dell SafeID Vmware Carbon Black Endpoint Standard Vmware Carbon Black Endpoint Advanced Vmware Carbon Black Endpoint Enterprise</p>

# 7330/7430/7530

## FEATURE TECHNICAL SPECIFICATION

**SECURITY<sup>1</sup> (CONT)**  
 Absolute Visibility  
 Absolute Control  
 Absolute Resilience Dell Encryption Personal  
 Dell Encryption Enterprise  
 Netskope Cloud Access Security Broker (CASB)  
 Netskope Secure Web Gateway  
 Netskope Private Access

**DOCKING<sup>1</sup>**  
 (Docks are optional, sold separately)  
 Dell Thunderbolt™ Dock - WD19TBS  
 Dell Thunderbolt™ Dock - WD22TB4  
 Dell Performance Dock - WD19DCS  
 Dell USB-C Dock - WD19S  
 Dell Universal Dock D6000/ D6000S  
 Dell Dual Charge Dock - HD22Q (May 2022)

**MULTIMEDIA<sup>1</sup>**  
 HD Camera  
 Experience: Temporal Noise Reduction, Camera Shutter  
 optional FHD IR Camera  
 Experience: ExpressSign-in™, Intelligent Privacy, Ambient Light sensor, Temporal Noise Reduction, Camera Shutter  
 2 x Speakers, Waves MaxxAudio Pro  
 2 x Noise Canceling Microphones  
 Intelligent Audio with Neural Noise Cancellation  
 Universal Audio jack

**BATTERY OPTIONS<sup>16</sup>**  
 3 cell 41 Whr Polymer , ExpressCharge 1.0™, ExpressCharge Boost™ & Long Life Cycle capable  
 4 cell 58 Whr Polymer , ExpressCharge 1.0™, ExpressCharge Boost™ & Long Life Cycle capable

**POWER OPTIONS<sup>1</sup>**  
 60W adapter, Type-C, Small Form Factor  
 65W adapter, Type-C  
 90W adapter, Type-C

**CONNECTIVITY OPTIONS<sup>1</sup>**  
 Microsoft Modern Standby Compliant  
**Wireless LAN Options<sup>8</sup>:**  
 Intel® Wi-Fi 6E (6GHz) AX211 2x2 + Bluetooth 5.2  
**Mobile Broadband Options<sup>8, 10</sup>:**  
 Qualcomm® Snapdragon™ X20 LTE-A CAT 16 (DW5821e) (eSIM enabled), WW excluding China, Turkey  
 Qualcomm® Snapdragon™ X20 LTE-A CAT 16 (DW5821e) WW  
 Qualcomm® Snapdragon™ X20 LTE-A CAT 16 (DW5821e) (eSIM enabled) for AT&T, Verizon & T-Mobile. US only  
 Qualcomm® Snapdragon™ X20 LTE-A CAT 9 (DW5829e) (eSIM enabled), WW excluding China, Turkey  
 Qualcomm® Snapdragon™ X20 LTE-A CAT 9 (DW5829e) WW  
 Qualcomm® Snapdragon™ X20 LTE-A CAT 9 (DW5829e) (eSIM enabled) for AT&T, Verizon & T-Mobile. US only

**PORTS, SLOTS & CHASSIS<sup>1</sup>**  
 2x USB Type-C Thunderbolt™ 4.0 with Power Delivery & DisplayPort 1.4  
 1x USB 3.2 Gen 1 with Power share  
 1x HDMI 2.0  
 1x Optional external uSIM card tray (WWAN only)  
 1x Optional Contacted SmartCard Reader  
 1x Optional Touch Fingerprint Reader in Power Button  
 1x Universal Audio jack  
 Wedge Shaped Lock slot

**DIMENSIONS & WEIGHT<sup>145</sup>**  
 Width: 12.07" / 306.5 mm  
 Height (Non-Touch FHD): 0.67" / 16.96 mm  
 Depth: 7.87" / 199.95 mm  
 Screen to Body: 85.9%  
 Laptop Starting Weight: 2.13 lbs / 0.967 kg  
 2-in-1 Starting Weight: 3.0 lbs / 1.36 kg

## TECHNICAL SPECIFICATION

Absolute Visibility  
 Absolute Control  
 Absolute Resilience  
 Dell Encryption Personal  
 Dell Encryption Enterprise  
 Netskope Cloud Access Security Broker (CASB)  
 Netskope Secure Web Gateway  
 Netskope Private Access

(Docks are optional, sold separately)  
 Dell Thunderbolt™ Dock - WD19TBS  
 Dell Thunderbolt™ Dock - WD22TB4  
 Dell Performance Dock - WD19DCS  
 Dell USB-C Dock - WD19S  
 Dell Universal Dock D6000/ D6000S  
 Dell Dual Charge Dock - HD22Q (May 2022)

HD Camera  
 Experience: Temporal Noise Reduction, Camera Shutter  
 optional FHD IR Camera  
 Experience: ExpressSign-in™, Intelligent Privacy, Ambient Light sensor, Temporal Noise Reduction, Camera Shutter  
 2 x Speakers, Waves MaxxAudio Pro  
 2 x Noise Canceling Microphones  
 Intelligent Audio with Neural Noise Cancellation  
 Universal Audio jack

3 cell 41 Whr Polymer , ExpressCharge 1.0™, ExpressCharge Boost™ & Long Life Cycle capable  
 4 cell 58 Whr Polymer , ExpressCharge 1.0™, ExpressCharge Boost™ & Long Life Cycle capable

60W adapter, Type-C  
 65W adapter, Type-C  
 90W adapter, Type-C

Microsoft Modern Standby Compliant  
**Wireless LAN Options<sup>8</sup>:**  
 Intel® Wi-Fi 6E (6GHz) AX211 2x2 + Bluetooth 5.2  
**Mobile Broadband Options<sup>8, 10</sup>:**  
 Qualcomm® Snapdragon™ X20 LTE-A CAT 16 (DW5821e) (eSIM enabled), WW excluding China, Turkey  
 Qualcomm® Snapdragon™ X20 LTE-A CAT 16 (DW5821e) WW  
 Qualcomm® Snapdragon™ X20 LTE-A CAT 16 (DW5821e) (eSIM enabled) for AT&T, Verizon & T-Mobile. US only  
 Qualcomm® Snapdragon™ X20 LTE-A CAT 9 (DW5829e) (eSIM enabled), WW excluding China, Turkey  
 Qualcomm® Snapdragon™ X20 LTE-A CAT 9 (DW5829e) WW  
 Qualcomm® Snapdragon™ X20 LTE-A CAT 9 (DW5829e) (eSIM enabled) for AT&T, Verizon & T-Mobile. US only  
 Qualcomm® Snapdragon™ X55 Global 5G Modem (DW5930e) (eSIM enabled), WW excluding China, Turkey  
 Qualcomm® Snapdragon™ X55 Global 5G Modem (DW5930e) WW  
 Qualcomm® Snapdragon™ X55 Global 5G Modem (DW5930e) (eSIM enabled) for AT&T, Verizon & T-Mobile. US only

2x USB Type-C Thunderbolt™ 4.0 with Power Delivery & DisplayPort 1.4  
 1x USB 3.2 Gen 1 with Power share  
 1x HDMI 2.0  
 1x Optional external uSIM card tray (WWAN only)  
 1x Optional Contacted SmartCard Reader  
 1x Optional Touch Fingerprint Reader in Power Button  
 1x Universal Audio jack  
 Wedge Shaped Lock slot

Width: 12.65" / 321.35 mm  
 Height (Non-Touch): 0.68" / 17.27 mm  
 Depth: 8.22" / 208.69 mm  
 Screen to Body: 86.7%  
 Laptop Starting Weight: 2.69 lbs / 1.22 kg  
 2-in-1 Starting Weight: 2.97 lbs / 1.35 kg

## TECHNICAL SPECIFICATION

Absolute Visibility  
 Absolute Control  
 Absolute Resilience  
 Dell Encryption Personal  
 Dell Encryption Enterprise  
 Netskope Cloud Access Security Broker (CASB)  
 Netskope Secure Web Gateway  
 Netskope Private Access

(Docks are optional, sold separately)  
 Dell Thunderbolt™ Dock - WD19TBS  
 Dell Thunderbolt™ Dock - WD22TB4  
 Dell Performance Dock - WD19DCS  
 Dell USB-C Dock - WD19S  
 Dell Universal Dock D6000/ D6000S  
 Dell Dual Charge Dock - HD22Q (May 2022)

HD Camera  
 Experience: Temporal Noise Reduction, Camera Shutter  
 optional FHD IR Camera  
 Experience: ExpressSign-in™, Intelligent Privacy, Ambient Light sensor, Temporal Noise Reduction, Camera Shutter  
 2 x Top Firing and 2 x Bottom Firing Speakers, Waves MaxxAudio Pro  
 2 x Noise Canceling Microphones  
 Intelligent Audio with Neural Noise Cancellation  
 Universal Audio jack

3 cell 41 Whr Polymer , ExpressCharge 1.0™, ExpressCharge Boost™ & Long Life Cycle capable  
 4 cell 58 Whr Polymer , ExpressCharge 1.0™, ExpressCharge Boost™ & Long Life Cycle capable

60W adapter, Type-C  
 65W adapter, Type-C  
 90W adapter, Type-C

Microsoft Modern Standby Compliant  
**Wireless LAN Options<sup>8</sup>:**  
 Intel® Wi-Fi 6E (6GHz) AX211 2x2 + Bluetooth 5.2  
**Mobile Broadband Options<sup>8, 10</sup>:**  
 Qualcomm® Snapdragon™ X20 LTE-A CAT 16 (DW5821e) (eSIM enabled), WW excluding China, Turkey  
 Qualcomm® Snapdragon™ X20 LTE-A CAT 16 (DW5821e) WW  
 Qualcomm® Snapdragon™ X20 LTE-A CAT 16 (DW5821e) (eSIM enabled) for AT&T, Verizon & T-Mobile. US only  
 Qualcomm® Snapdragon™ X20 LTE-A CAT 9 (DW5829e) (eSIM enabled), WW excluding China, Turkey  
 Qualcomm® Snapdragon™ X20 LTE-A CAT 9 (DW5829e) WW  
 Qualcomm® Snapdragon™ X20 LTE-A CAT 9 (DW5829e) (eSIM enabled) for AT&T, Verizon & T-Mobile. US only

2x USB Type-C Thunderbolt™ 4.0 with Power Delivery & DisplayPort 1.4  
 2x USB 3.2 Gen 1, one with PowerShare (U15 processors), or 1x USB 3.2 Gen 1 with Power share (P28 processors)  
 1x HDMI 2.0  
 1x Optional external uSIM card tray (WWAN only)  
 1x Optional Contacted SmartCard Reader  
 1x Optional Touch Fingerprint Reader in Power Button  
 1x Universal Audio jack  
 Wedge Shaped Lock slot

Width: 14.08" / 357.7 mm  
 Height (Non-Touch FHD): 0.69" / 17.5 mm  
 Depth: 9.05" / 229.75 mm  
 Screen to Body: 86.6%  
 Starting weight: 3.39 lbs / 1.54 kg



# 7330/7430/7530

**FEATURE TECHNICAL SPECIFICATION**

**TECHNICAL SPECIFICATION**

**TECHNICAL SPECIFICATION**

**REGULATORY AND ENVIRONMENTAL COMPLIANCE<sup>1</sup>**

Laptop: Regulatory Model: P133G; Regulatory Type: P133G002  
 2-in-1: Regulatory Model: P134G; Regulatory Type: P134G002  
 ENERGY STAR  
 EPEAT Gold Registered. For specific country participation and rating, please see [www.epeat.net](http://www.epeat.net)  
 TCO compliant configurations available  
 Trade Agreements Acts (TAA) configurations available  
 Halogen-Free/ Arsenic-Free  
 BFR/PVC free<sup>9</sup>

Laptop: Regulatory Model: P135G; Regulatory Type: P135G002  
 2-in-1: Regulatory Model: P136G; Regulatory Type: P136G002  
 ENERGY STAR  
 EPEAT Gold Registered. For specific country participation and rating, please see [www.epeat.net](http://www.epeat.net)  
 TCO compliant configurations available  
 Trade Agreements Acts (TAA) configurations available  
 Halogen-Free/ Arsenic-Free  
 BFR/PVC free<sup>9</sup>  
 Halogen-Free/ Arsenic-Free  
 BFR/PVC free<sup>9</sup>

Laptop: Regulatory Model: P110F; Regulatory Type: P110F002  
 ENERGY STAR compliant configurations available  
 ENERGY STAR  
 EPEAT Gold Registered. For specific country participation and rating, please see [www.epeat.net](http://www.epeat.net)  
 TCO compliant configurations available  
 Trade Agreements Acts (TAA) configurations available  
 Halogen-Free/ Arsenic-Free  
 BFR/PVC free<sup>9</sup>

**INPUT<sup>1</sup>**

10-Finger Touch Display  
 Microsoft® Precision Clickpad  
 Spill Resistant Non-Backlit Keyboard,  
 Spill Resistant Backlit Keyboard,  
 Dell Premier Rechargeable Active Pen - PN7522W (optional, sold separately, 2-in-1 only)  
 Dell Active Pen - PN5122W (optional, sold separately, 2-in-1 only)

10-Finger Touch Display  
 Microsoft® Precision Clickpad  
 Spill Resistant Non-Backlit Keyboard,  
 Spill Resistant Backlit Keyboard,  
 Dell Premier Rechargeable Active Pen - PN7522W (optional, sold separately, 2-in-1 only)  
 Dell Active Pen - PN5122W (optional, sold separately, 2-in-1 only)

10-Finger Touch Display  
 Microsoft® Precision Clickpad  
 Spill Resistant Non-Backlit Keyboard,  
 Spill Resistant Backlit Keyboard,  
 Dell Premier Rechargeable Active Pen - PN7522W (optional, sold separately, 2-in-1 only)  
 Dell Active Pen - PN5122W (optional, sold separately, 2-in-1 only)

**SENSORS<sup>1</sup>**

Gyroscope, Digital Compass/Magnetometer, Accelerometer, GPS (via WWAN Card only), Ambient Light Sensor; GMR sensor (2-in-1 only), Adaptive Thermal Performance (via Gyroscope/Accelerometer), Dell ExpressSign-In (via Camera-based proximity), Wake/Power on with lid open (via Hall sensor)

Gyroscope, Digital Compass/Magnetometer, Accelerometer, GPS (via WWAN Card only), Ambient Light Sensor; GMR sensor (2-in-1 only), Adaptive Thermal Performance (via Gyroscope/Accelerometer), Dell ExpressSign-In (via Camera-based proximity), Wake/Power on with lid open (via Hall sensor)

Gyroscope, Digital Compass/Magnetometer, Accelerometer, GPS (via WWAN Card only), Ambient Light Sensor; Adaptive Thermal Performance (via Gyroscope/Accelerometer), Dell ExpressSign-In (via Camera-based proximity), Wake/Power on with lid open (via Hall sensor)

**SYSTEMS MANAGEMENT<sup>1</sup>**

Intel® vPro™ Technology (iAMT 12) (optional, requires Intel WiFi® Link WLAN and a vPro compatible processor), Dell Client Command Suite available ([dell.com/command](http://dell.com/command)), Factory Installed Dell Client Command | Update, Dell Command | Power Manager | Dell Optimizer

Intel® vPro™ Technology (iAMT 12) (optional, requires Intel WiFi® Link WLAN and a vPro compatible processor), Dell Client Command Suite available ([dell.com/command](http://dell.com/command)), Factory Installed Dell Client Command | Update, Dell Command | Power Manager | Dell Optimizer

Intel® vPro™ Technology (iAMT 12) (optional, requires Intel WiFi® Link WLAN and a vPro compatible processor), Dell Client Command Suite available ([dell.com/command](http://dell.com/command)), Factory Installed Dell Client Command | Update, Dell Command | Power Manager | Dell Optimizer

**WARRANTY AND SERVICE<sup>1</sup>**

Limited Hardware Warranty<sup>4</sup>, Standard 3 year Mail-in Service after Remote Diagnosis<sup>11</sup>, optional 3, 4 and 5 year hardware warranty extensions, and 3-5 year Dell ProSupport contracts available<sup>12</sup>

Limited Hardware Warranty<sup>4</sup>, Standard 3 year Mail-in Service after Remote Diagnosis<sup>11</sup>, optional 3, 4 and 5 year hardware warranty extensions, and 3-5 year Dell ProSupport contracts available<sup>12</sup>

Limited Hardware Warranty<sup>4</sup>, Standard 3 year Mail-in Service after Remote Diagnosis<sup>11</sup>, optional 3, 4 and 5 year hardware warranty extensions, and 3-5 year Dell ProSupport contracts available<sup>12</sup>

**PERIPHERAL ECOSYSTEM<sup>1</sup>**

Powerful accessories designed and tested for the Latitude 7320 enable seamless productivity to work from anywhere

Powerful accessories designed and tested for the Latitude 7420 enable seamless productivity to work from anywhere

Powerful accessories designed and tested for the Latitude 7520 enable seamless productivity to work from anywhere

**SUSTAINABILITY**

Biobased material in rubber feet  
 Post-consumer recycled plastic in battery frame  
 Post-consumer recycled plastic in palmrest  
 Recycled Carbon Fiber in the lid  
 Packaging made from 100% recycled or renewable materials (coming later CY22)

Biobased material in rubber feet  
 Post-consumer recycled plastic in battery frame  
 Post-consumer recycled plastic in palmrest  
 Recycled Carbon Fiber in the lid  
 Packaging made from 100% recycled or renewable materials (coming later CY22)

Biobased material in rubber feet  
 Post-consumer recycled plastic in battery frame  
 Post-consumer recycled plastic in palmrest  
 Recycled Carbon Fiber in the lid  
 Packaging made from 100% recycled or renewable materials (coming later CY22)

## Product Disclosures:

- 1 Offering may vary by country and by configuration and operating system.
- 2 A 64-bit operating system is required to support 4GB or more of system memory.
- 3 GB means 1 billion bytes and TB equals 1 trillion bytes; actual capacity varies with preloaded material and operating environment and will be less.
- 4 Limited Hardware Warranty: For copy of Limited Hardware Warranty, write Dell USA LP, Attn: Warranties, One Dell Way, Round Rock, TX 78682 or see [www.dell.com/warranty](http://www.dell.com/warranty).
- 6 The stated Watt Hour (Whr) is not an indication of battery life.
- 7 Intel Rapid Storage Technology requires a HDD, mSATA, or an SSD, as primary storage device and Windows OS required
- 8 Wireless antenna available only at time of system purchase.
- 9 Dell Latitude 7330/7430/7530 are brominated flame retardant free (BFR-free) and polyvinyl chloride free (PVC-free); meeting the definition of BFR-/PVC-free as set forth in the INEMI Position Statement on the 'Definition of Low-Halogen Electronics (BFR-/CFR-/PVC-free)'. Plastic parts contain less than 1,000 ppm (0.1%) of bromine (if the Br source is from BFRs) and less than 1,000 ppm (0.1%) of chlorine (if the Cl source is from CFRs or PVC or PVC copolymers). All printed circuit board (PCB) and substrate laminates contain bromine/chlorine total less than 1,500 ppm (0.15%) with a maximum chlorine of 900 ppm (0.09%) and maximum bromine being 900 ppm (0.09%).
- 10 4G LTE antenna and 5G available only at time of system purchase. Mobile Broadband Subject to service provider's broadband subscription and coverage area; additional charges apply.
- 11 Mail-in Service after Remote Diagnosis: Remote Diagnosis is determination by online/phone technician of cause of issue; may involve customer access to inside of system and multiple or extended sessions. If issue is covered by Limited Hardware Warranty ([www.dell.com/warranty](http://www.dell.com/warranty)) and not resolved remotely, technician and/or part will be dispatched, usually within 1 business day following completion of Remote Diagnosis. Availability varies. Other conditions apply.
- 12 Dell Services: Availability and terms of Dell Services vary by region. For more information, visit [www.dell.com/servicesdescriptions](http://www.dell.com/servicesdescriptions).
- 13 GB means 1 billion bytes and TB equals 1 trillion bytes; significant system memory may be used to support graphics, depending on system memory size and other factors.
- 15 Weights vary depending on configuration and manufacturing variability; 0.990 kg configurability: up to i7 vPro (U15), FHD NT Ultralight LCD, WLAN, 41Whr battery, M.2 2230 class 35 SSD, No security, non-backlit KB.
- 16 Based on Dell internal analysis of competitive PC performance software and applications September 2021.
- 17 Simultaneous multi-network connection (or Connection based teaming) is a new connectivity feature under ExpressConnect. It simultaneously sends and receives data and video traffic using two or more wired or wireless connections. Based on Dell internal analysis, September 2021. Simultaneous Data Transfer works with wired and wireless networks. For select Dell platforms, a USB Wi-Fi adapter is required to connect a second Wi-Fi network.
- 18 Percentage of Bio-based and recycled content by weight: up to 39% bio-based material in the bottom bumpers, up to 50% recycled plastic in the battery frame, up to 35% recycled plastic in the palm rest and up to 18% recycled Carbon Fiber in the lid. Statements apply to Latitude 7430 and 7530 starting March 2022. Based on Dell analysis, November, 2021.
- 19 Tree-based bioplastic in lid of Latitude 5000 Series and bio-based rubber in Latitude 5000 & 7000 Series.
- 20 EPEAT registered where applicable. EPEAT registration varies by country. See [www.epeat.net](http://www.epeat.net) for registration status by country.
- 21 Based on a Forrester Study commissioned by Dell Technologies and Intel: The Total Economic Impact of Dell's PC as a Service", November 2020 <https://www.delltechnologies.com/asset/en-us/solutions/business-solutions/industry-market/forrester-the-total-economic-impact-of-dells-pc-as-a-service.pdf>
- 22 Based on Dell Internal analysis, January 2019.
- 23 Based on Principled Technologies Report commissioned by Dell Technologies, "Deliver pre-configured systems to end users faster with Dell Provisioning for VMware Workspace ONE", January 2019, comparing deployment using Dell Provisioning for Workspace ONE vs. traditional deployment. Results extrapolated to deployment of 1000 systems, a week represents seven full workdays. Actual results will vary.
- 24 Based on a Forrester Total Economic Impact™ Study commissioned by VMware, "The Total Economic Impact™ of VMware Workspace ONE for Windows 10", September 2018. Results from interviews with VMware Workspace ONE customers and/or based on a 12,000-employee composite organization.
- 25 Based on a Principled Technologies test report, "Spend Less Time and Effort Troubleshooting Laptop Hardware Failures" dated April 2018. Testing commissioned by Dell, conducted in the United States. Actual results will vary. Full report: <http://facts.pt/L52XKM>
- 26 Based on internal analysis, April 2021. Dell Optimizer available in 2020 devices, not available in OptiPlex 3000 series, Latitude 3310 2-in-1 and Latitude Chromebook Enterprise. Feature availability and functionality varies by model.
- 27 Available on Latitude 9000 and select 7000 series; Precision mobile workstations 7000 and select 5000 series. See product details for availability.
- 28 ExpressResponse must be enabled in the Applications feature. DO learns how user uses the selected application(s) over several hours. Based on Dell testing using Sysmark 2018 benchmark on a Latitude system running productivity applications; and using performance evaluation benchmarks on Precision mobile workstations running ISV applications, March 2020. Improvement will vary based on product configuration, use, application and other factors
- 29 User must input preferred apps first in order for them to be analyzed.
- 30 ExpressConnect available with Dell Optimizer software version 2.0 and onwards. Download the latest at <https://www.dell.com/support/home>.
- 31 Disclaimer: Simultaneous multi-network connection (or Connection based teaming) is a new connectivity feature under ExpressConnect. It simultaneously sends and receives data and video traffic using two or more wired or wireless connections. Based on Dell internal analysis.
- 32 Best network selection based on signal strength, channel congestion, router type and others. Network suggestions based on user credentials.
- 33 With ExpressConnect's optimized internet bandwidth. Based on testing performed by Dell Labs in June 2020, comparing performance with ExpressConnect enabled and disabled. Actual results may vary; testing results do not guarantee performance under test conditions. Subject to service provider's broadband subscription and coverage area; speeds may vary. Additional charges will apply. Contact your service provider for details.
- 34 Based on Dell internal analysis of battery life usage model calculations, Nov 2020. Results vary depending on usage and computing conditions.
- 35 Compared to previous gen 7000 series models. Quieter operation refers to the level of noise generated by the fan under the heavy load
- 41 Approximately 78% recycled content and 22% renewable content in the form of FSC paper fibers. Excludes optional items added to order and included in box
- 42 Based on Dell analysis of battery life usage model calculations, Nov. 2020. Results vary depending on use, operating conditions and other factors.