

PERFORMANCE

Processor

Intel® Celeron® N4500 (2C / 2T, 1.1 / 2.8GHz, 4MB L3)

Graphics

Integrated Intel UHD Graphics

Chipset

Intel SoC Platform

Memory

4GB Soldered LPDDR4x-2933

Memory Slots

Memory soldered to systemboard, no slots, single-channel (4GB models)

Max Memory

4GB soldered memory, not upgradable

Storage

64GB eMMC 5.1

Storage Support

64GB eMMC 5.1 on systemboard

Storage Slot

eMMC on systemboard, no slots

Card Reader

microSD Card Reader

Optical

None

Audio Chip

High Definition (HD) Audio, Realtek® ALC5682I codec

Speakers

Stereo speakers, 2W x2

Camera

HD 720p with Privacy Shutter

Microphone

2x, Array

Battery

Integrated 47Wh

Max Battery Life

Google power load test: 10 hr

Power Adapter

45W USB-C® (3-pin)

DESIGN

Display

15.6" FHD (1920x1080) IPS 250nits Anti-glare

Touchscreen

None

Keyboard

Non-backlit, Nordic (DK/FI/NO/SV)

Case Color

Abyss Blue

Surface Treatment

Texture Painting

Case Material

PC-ABS (Top), PC-ABS (Bottom)

Dimensions (WxDxH)

362 x 243 x 18.95 mm (14.3 x 9.6 x 0.7 inches)

Weight

Around 1.58 kg (3.48 lbs)

SOFTWARE

Operating System

ChromeOS

Bundled Software

None

CONNECTIVITY

Ethernet

No Onboard Ethernet

WLAN + Bluetooth®

Wi-Fi® 6, 11ax 2x2 + BT5.1

Standard Ports

- 2x USB 3.2 Gen 1
- 1x USB-C 3.2 Gen 1 (support data transfer, Power Delivery 3.0 and DisplayPort™ 1.4)
- 1x HDMI® 1.4
- 1x microSD card slot
- 1x Headphone / microphone combo jack (3.5mm)

SECURITY & PRIVACY

Security Chip

Google Security Chip H1

Fingerprint Reader

None

Physical Locks

Kensington® Nano Security Slot™

Other Security

Camera privacy shutter

SERVICE

Base Warranty

2-year, Courier or Carry-in

Included Upgrade

None

CERTIFICATIONS

Green Certifications

- ENERGY STAR® 8.0
- ErP Lot 3
- RoHS compliant

MODEL

TopSeller : Yes

Announce Date : 2021-08-26

EAN / UPC / JAN : 196119127469

End of Support : 2027-09-15



· Lenovo reserves the right to change specifications or other product information without notice.

· Product image on this page is a sample, it may not match the real color of this model

· Battery life is an estimated maximum. Actual battery life may vary based on many factors, including screen brightness, active applications, features, power management settings, battery age and conditioning, and other customer preferences

Premium Care - Advanced Support from Real People. Real Fast.



REAL PERSON

Choose how you want to reach us - through the phone, chat or email - our expert technicians will take care of you.



REAL FAST

Highly trained technicians will provide you real-time solutions, whatever the issue, on your first contact. If needed, our team will schedule an onsite visit for the next business day.



HASSLE FREE

'Getting started' and 'how-to' assistance for hardware and software. Easy solutions that are simple to reach - that's how Premium Care delivers you the ideal support experience.



PC HEALTH CHECK

Free annual PC Health Check that allows our experts to spot issues before you do so they can resolve them quickly and help you avoid PC problems.

Accidental Damage Protection - Protection of your PC from the unexpected.

Experience shows that a significant portion of devices may be damaged (and not covered under warranty) in the first three years. Lenovo's Accidental Damage Protection service covers accidents beyond the system warranty such as drops, spills, bumps and even electrical surges. Make sure your new device has maximum protection, avoid unplanned costs and get peace of mind.

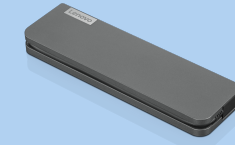
Base Warranty – Included with the systems you purchase, default 1- or 3-year coverage window.

Warranty Extensions & Upgrades – Service and protection that's right for your circumstances.

- Pick Up & Return Courier
- Onsite Support
- Technician Installed Customer
- Replaceable Unit Service
- International Warranty Upgrade

Lenovo may not offer the products, services or features discussed in this document in all regions. Lenovo may withdraw an offering at any time. Consult your local representative for information on offerings available in your area. Lenovo reserves the right to change specifications or other product information without notice. Lenovo is not responsible for photographic or typographical errors. Lenovo provides this publication "as is" without warranty of any kind, either express or implied, including the implied warranties of merchantability or fitness for a particular purpose.

Recommended Accessories



Lenovo USB-C Mini Dock_US

40AU0065US

Expand Your Potential with An Universal Mini Dock; Lenovo understands that modern business depends on a wide variety of PC's and even brands to meet their business needs. To make this easier Lenovo USB-C Mini dock is ...



Lenovo 65W USB-C DC Travel Adapter

40AK0065WW

Power up and stay productive on the road with this DC Travel adapter. Lenovo 65W USB-C DC Travel Adapter is the universal DC adapter, providing 65W power via USB-C for outdoor use.

For a full list of accessories and services, please visit:
<https://smartfind.Lenovo.com>

Lenovo

PSREF
Product Specifications
Reference